

CONFIDENTIAL MEMORANDUM

TO: Barbara Grassley
FR: Bob Haus
RE: The Friends of Chuck Grassley
DT: September 8, 1994

Barbara, I wanted to give you some background information on The Friends of Chuck Grassley, which has been organized to help elect Republican candidates to the Iowa Legislature.

In the presentations we have made to the House and Senate leadership, we have stressed the following points, some of which may be appropriate for use in your remarks:

- We have tried to be realistic in the dollar amount we have said we would like to raise and distribute, quoting figures in the \$10,000 to \$15,000 range (I would like to raise and distribute more, but I think we need to keep expectations low).
- We have consistently emphasized the fact that this operation is an extension of what your 1986 and 1992 campaigns undertook on behalf of Republican candidates. In 1986, we started this type of assistance through the Iowa Committee. In 1992, we asked donors who had given to the FEC limit to CEG to donate to the Governor's campaign or to the Iowa Committee, which helped a group of "second tier" candidates like Mary Lundby, Ron Corbett, Julia Gentleman, and Jack Beaman. As you may remember, we held a Communications workshop for these candidates, where members of the Grassley staff (John M., Tom S., Penny B. and Bob H.) gave advice on how to organize a district, how to raise money, and where to most cost effectively place advertisements. In addition, the main attraction was Jackie Mason, a communications specialist from Florida, who gave advice on how to conduct press interviews, record radio spots, and give effective speech presentations.

In 1992, the Grassley Committee spent almost \$50,000 on "institutional" television advertisements in the Des Moines and Cedar Rapids markets that targeted the length of control the Democrats had both in Washington and in Des Moines. In addition, the Committee helped Congressmen Nussle and Lightfoot with in-kind donations to defer costs of the Grassley '92 tracking effort, which polled thousands of Iowans during the last six weeks of the cycle. Finally, in 1992, members of the campaign staff donated their time to help the State Party undertake polling of over 25 contested districts. I have a complete listing of the 1992 activities, if you would like that document.

- In addition to these activities, the Senator has done hundreds of radio and print ads for various candidates through the years. I have said, and I think this is true, that there has not been a candidate or elected official that has done as much as he has for the party and its candidates. He has been there every election cycle, and The Friends of Chuck Grassley is merely an extension of what he has been doing in prior years.
- This effort will not detract from the Governor's race. Remember, in 1990, Tauke and the Governor raised approximately \$7 million out of Iowa. No where near that

much has been raised yet this year, and there are still people who want to help, and those people need to be asked.

- This effort will have very little overhead expense--virtually every dollar raised will go directly out to assist candidates. The Grassley campaigns have always been known for their efficiency, and this effort will be no different.

These are the basic points we have been making. The initial reception to the idea has been very positive, although of course I got the immediate question about CEG's plans in 1998 re the governorship. I merely responded that this was an extension of previous efforts and a way to fill a perceived void in assisting legislative candidates.

As you know, Republicans control the Iowa House by a slim 51-49 margin. In the Senate, Republicans are in the minority by a 27-23 margin. By far the most contentious races will be in the House. There is a very good chance that we can get to 54 or more in the House. My estimate is that the Senate will stay Democrat, and that it will be a great year if we get to 24, and chances are that we could actually dip to 22. With so much attention being focused on the Governor's race, we need to help these candidates all we can.

Please feel free to call if you have any questions.

SEP 08 '94 08:06 IOWA HOUSE REPUBLICANS

P.2

TO: Kim Haus
FR: Susan Severino (515/281-3854)
RE: Biographical information on Scott County Republican candidates for IA House

House District 40

will
make intro.

Representative Steve Grubbs
District Registration Numbers: R 27%, D 34%, I 40%
Serving second term
Chair, House Education Committee
Chair, House Legislative Campaign Committee (HLCC)
Former President, University of Iowa Student Senate
Family: Wife, Kelli; 2 children

House District 41

No Press.
Conference
Possibly
Reception

Representative Dave Millage
District Registration Numbers: R 36%, D 24%, I 40%
Serving second term
Assistant House Majority Leader
Lawyer
Family: Single

House District 42

will attend

James Van Fossen (seeking seat of Rep. Bob Rafferty. Opponent is former Representative Matt Wissing)
District Registration Numbers: R 32%, D 36%, I 32%
Customer Service Representative
International Brotherhood of Electrical Workers
Family: Wife, Dawn; 3 children

House District 43

will attend

Representative Mona Martin
Serving first term
District Registration Numbers: R 27%, D 39%, I 34%
Partner in family business
Former school teacher
Interested in crime and welfare reform issues
Family: Husband, Bob; 2 children; 3 grandchildren

House District 44

will attend

Nell Harrison
DOB: 4/29/67
District Registration Numbers: R 23%, D 43%, I 34%
Lay Professional, St. James Lutheran Church
Alderman in Davenport 1990-1993
Family: Single

Keneu - Senators in attendance

Sen. Dick Drake from Muscatine
and Shurley Drake

Sen. Sheldon Ritter (may be there)

Add to list I gave you.

Barry Brauns

Clyde Bradley

both house candidates
that may be there

Barbara Hassley will meet us at the press
conference. Her flight gets in @ 3:50

Dole will visit Cedar Rapids

Iowans join attack on Senate filibusters

By Ken Sullivan

Gazette senior editor

Senate Minority Leader Bob Dole will be campaigning in Iowa late this week for Republican congressional hopefuls and has included a news conference in Cedar Rapids on his agenda.

In the meantime, a bipartisan group of Iowans has joined the nationwide effort to deprive Dole and his Senate colleagues — or future Senate minorities — of their chief means of competing with the majority party.

A news conference will be held in Des Moines today by Iowans supporting the national movement, Action, Not Gridlock! The project is aimed at ending what supporters believe is the abuse of the filibuster, a parliamentary

maneuver minority parties use to block issues from coming to a vote. To end a filibuster requires 60 votes in the 100-member Senate. Among Iowans participating in the effort are former Gov. Robert Ray, a Republican; former Sen. Dick Clark, a Democrat; and members of the Legislature, state government and the private sector.

Dole, whose Iowa stops include campaign appearances on behalf of congressional candidates in the 4th and 5th districts, will hold a news conference at the Five Seasons Hotel Friday afternoon. He'll join Sen. Charles Grassley for a fund-raiser in Davenport Friday night.



Sen. Bob Dole
In C.R. Friday

About the Candidate

Jay Irwin, Republican nominee for State Treasurer, is a Des Moines native and fourth generation Iowan. Born August 15, 1953, Jay graduated from Des Moines Roosevelt High School, receiving bachelors and law degrees with honors from Drake University.

Jay's achievements include finishing first in the Kansas Law Enforcement Academy while a police officer in Topeka, successfully completing assignments with the uniform, investigation, metro-squad, intelligence, vice-narcotics and training divisions. Jay was assigned to U.S. Secret Service security details protecting President Gerald Ford and Vice Presidential candidate Bob Dole during the 1976 presidential campaign and received a duty commendation for his role in successful apprehension of major drug dealers.

Jay became one of the first legal investigators in a Des Moines law firm following a tour of duty as a Polk County Deputy Sheriff. Since 1986, he has practiced commercial, bankruptcy, taxation, financial, corporate and business law in Des Moines. Jay is admitted in the Iowa state and federal courts, U.S. Tax Court and U.S. Supreme Court.

Jay is married to Cindy Irwin, a Des Moines native and Drake graduate. The Irwins have two children, Ashley, age eight, and Michael, age two. Their home is in West Des Moines and they belong to St. Paul's Episcopal Church in downtown Des Moines. Jay and Cindy each have family in Des Moines. Jay also has relatives in Missouri Valley, Iowa. Jay's personal interests include sailing, skiing, golf and computer science.

Jay is founder and chair of the Iowa State Bar Association Software Development Committee which pioneered the Computer-Assisted Legal Forms System™ for Iowa Bar members. He is chair of the Committee on Justice and Technology, a bipartisan coalition working to make the Iowa Communications Network fiberoptic facility available to the Iowa court system to improve delivery of civil and criminal justice to the public. Jay is also a member of Conference 2000, a statewide organization commissioned to vision the future of the Iowa legal system. He is an active member of numerous local, state and national law organizations and computer-user groups.

Jay lectures for various continuing legal education seminars and has written numerous published articles on subjects ranging from fiberoptic networks to international computer software sales. He believes strongly in quality education for our children, donating time as a Project Business Consultant for Junior Achievement of Des Moines.

The state treasurer's office is ripe for change in 1994 due to a vulnerable incumbent with ties to the Iowa Trust scandal too close for comfort, a lackluster public investment record and a diminishing base of support. Recent independent polls show Jay Irwin is electable and making significant gains in this highly winnable race!

Paid for by **IRWIN** for State Treasurer

TOM CORY
CANDIDATE FOR SECRETARY OF AGRICULTURE

P.O. Box 41
Alleman, Iowa 50007
(515) 964-8584



TOM CORY

Secretary of Agriculture Candidate Tom Cory is a farmer and Agricultural Education instructor at North Polk Community School District in Alleman, Iowa. For 24 years, Cory has helped young Iowans learn about Production Agriculture, Agri-Science, Technology, Marketing, and Horticulture. The North Polk Ag Education Department was recognized as the outstanding Department in the United States in 1988. In 1989 Tom Cory was named National Agri-Science Teacher finalist, and, in 1990 Tom was chosen American Vocational Association Teacher of the Year.

Under Tom Cory's leadership, the North Polk FFA has been the number one chapter in Iowa for five out of six years. In 1987, Cory's FFA members secured Vice President George Bush as a banquet speaker. Cory later served the Republican Party as a leader in "Farmers for Bush".

In addition to his teaching career, Tom Cory farms 200 acres and raises cattle and sheep. Tom has been active in several farm organizations, and was the Iowa State Fair Sheep Superintendent for 10 years. Several well known Iowa Republicans have joined Tom's steering committee, including former Secretary of Agriculture Robert Lounsberry.

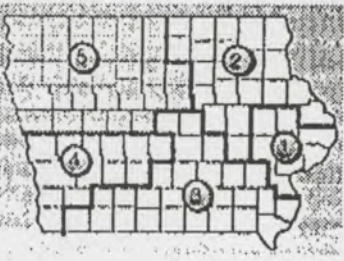
Tom Cory has visited all 99 counties at least once. The message Tom is delivering across Iowa contains three points. To put Iowa at the "head of the table" in agriculture, we need to 1) work together to reduce duplication in government, 2) encourage job growth through value-added products and industries, and 3) educate Iowans from the farrowing house to the grocery aisle about agricultural awareness.

Paid for by Iowans for Cory

Suggestions for Bob Dole

- * Tom Latham is a farmer and agribusinessman who's made a living creating jobs and adding value to Iowa grown products. Tom worked with his father and brothers to turn a small seed company into a regional seed business with customers in five states.
 - * 5th District voters have a clear choice between a Harvard Professor who wants to create more government jobs in Washington and an Iowa farmer who wants to create more real jobs right here in Iowa.
 - * The 1995 Farm Bill will be very important to this district and when it comes to agriculture, I'll take the word of an Iowa farmer over that of a Harvard Professor any day.
 - * Sheila McGuire brags about helping to draft the Clinton health care plan. Don't you have to wonder about a candidate for Congress in a rural district who brags about a health care plan which would devastate rural hospitals and force many small businesses out of business?
 - * Tom Latham supports a balanced budget amendment and a line item veto. He also supports tuition tax credits for parents of public and private school students.
- Tom has suggested cutting congressional pay by 5 percent for each year the budget isn't balanced.

TOM LATHAM and SHEILA MCGUIRE are opponents in Iowa's 5th Congressional District race.



Candidate's link to Texan draws fire

Tom Latham defends his ties to GOP lawmaker Dick Armey, a leading critic of U.S. farm policy.

By **PHOEBE WALL HOWARD**

REGISTER STAFF WRITER

Fifth District congressional candidate Tom Latham has come under fire for being host to a Texas congressman deemed



Latham
Republican

by farm groups as anti-farmer and anti-farm family.

At issue is an Iowa appearance on behalf of Latham by U.S. Rep. Dick Armey, a Texas Republican and one of the nation's leading critics of farm

policy.

During his appearance Aug. 23, Armey appeared at a fund-raiser for Latham in Denison and said in an interview: "The market will determine the optimal number of farmers at the optimal size."

The Fifth District, which is in northwest Iowa, gets the most benefits of any Iowa district from federal



farm programs, according to an analysis of federal records. Latham is running against Democrat Sheila McGuire for the seat being vacated by Rep.

Crime attacks

Campbell portrays Branstad as easy on

By **THOMAS A. FOGARTY**

REGISTER STAFF WRITER

In an apparent effort to seize the high ground on crime, Attorney General Bonnie Campbell began airing television commercials Tuesday charging that Gov. Terry Branstad has freed parolees "who have gone on to rape, rob and murder again."

With the commercial, Campbell is broadening the crime debate in the race for governor beyond recent arguments over reinstating the death penalty, which the Iowa Legislature repealed in 1965. Branstad, a Republican, favors reinstatement. Campbell, a Democrat, opposes it.

"Branstad's focus on the death penalty has been nothing more than a smoke screen to cover up his crime record," said Phil Roeder, Campbell's campaign manager. "We've believed all along that if this campaign is waged on the crime issue, Bonnie Campbell can win."

Brian Kennedy, Branstad's campaign manager, dismissed Campbell's attack. "If running misleading

advertisements were a crime, Bonnie Campbell would be serving a life sentence," he said. "Governor Branstad is a leader in the fight against violent crime."

Campbell's 30-second commercial, which is airing statewide, charges that Branstad's tough talk on crime this election year is at odds with the record he has compiled in three terms as Iowa governor.

"Under Branstad, Iowa prisoners serve less than a quarter of their sentences, and many of these parolees have gone to rape, rob and murder again," the narrator of the commercial says.

Lettie Prell, an analyst in the Iowa Division of Criminal and Juvenile Justice, confirmed that her study of 689 inmates released from Iowa prisons in 1993 indicates that, on average, each served 20 percent of his or her sentence. For violent offenders, the study showed that 27.5 percent of the sentence was served.

What her statistics don't take into account, said Prell, are two pertinent characteristics of the Iowa criminal justice system: the nature of a life

sentence in Iowa, and the traditional practice of indeterminate sentencing.

In almost every case, an Iowa prison means ex. Therefore, Prell said, life aren't reflected in statistics. A study of released inmates in Iowa's system of indeterminate sentencing for crimes other than most serious felonies gives authorities broad discretion long to hold an inmate. she said, maximum sentence usually long in states with indeterminate sentencing policies.

According to Prell, victims released from Iowa 1993 had served average about three years, 10 months. In other states, she said, served an average two years, three months in the most recent year for which available.

Visually, Campbell's commercial shows an inmate being dis. what appears to be a prison immediately trades a high

'THELMA' AND FRANCESCA'S SON

Iowans wait for 'Bridges' call

By **JOHN CARLSON**

REGISTER STAFF WRITER

It's a quiet restaurant. National Geographic photographer Robert Kincaid is there, alone.

A woman and her husband are having lunch. The woman notices the ruggedly handsome yet mysterious Kincaid.

"Thelma told me he checked into the motor inn and that the bill goes to the National Geographic magazine," she says, very softly, to her husband.

As movie lines go, it's not exactly "We'll always have Paris" — a great line from another movie about lost love — but it's good enough for Louise Arter.

Until now, Arter has been best known for telling audiences stories about her shoe collection. If everything works out, Arter, the "Shoe Lady from Adair," will recite the "Thelma" line in "The Bridges of

"I think it would be great if I got one of the parts. I'm not counting on it, but I sure would like it."

— Louise Arter

farmer husband.

"Well, that might work," she said into the cameras at the tryout. "But if he's still mad at you, tell him you could have done better, but you married him anyway."

Arter said casting people from Warner Bros. also had planned to ask her to read for a part of a woman they referred to as "the harlot."

"They got a look at me and decided I wouldn't work in that part," Arter said. "I think it would be great if I got one of the parts. I'm not counting on it, but I sure would like it."

Nichols, 17, who has a community theater production of high school plays in Ames hours' notice. Warner Bros. directors called him after photo.

"I got there, they gave me to look at, and I went into audition," Nichols said. "I read part of Meryl Streep's scene. There weren't a lot of lines. I told me to say it straight, it up or use any emotion. The scene from the movie where she is asking me how my date is. I say, 'OK,' and then she says what my date's name was 'Betty.'"

The tryouts have been held and Warner Bros. and the actors now flinch every time phones ring. Marco Barla man for the movie company decisions have been made become clear, he said, in a week.

FROM: REPUBLICAN PARTY OF IOWA

TO: 1 712 277 3168

DEC 29, 1988 10:56AM P.03

Democrat

from his fellow Republican by saying, "Dick Armey and I publicly agreed to disagree, as far as agricultural policy. If we only talk to people who support agricultural subsidies, we are going to lose. I will talk to the devil to promote agriculture and small farmers and the need to maintain a safety net. Dick Armey (the third-ranking House GOP leader) asked to come in."

Loyalty Questioned

But the Iowa Democratic Party attacked Latham and questioned his loyalties to agriculture.

So did the Iowa Farmers Union, which said that, given Latham's "background in corporate agribusiness," the group was "nervous about whose interests he would be serving in Congress. The family farm is different from a big corporation like Latham Seed."

Latham, a partner in four family farm units, said he considers himself a family farmer and anyone who suggests he represents big business is being ridiculous.

"I'm just like a lot of farmers: I have assets but very little cash. I'm proud of what we have done, my two brothers and my parents, coming from a small farm with five boys. I can remember when my mother was crying at supper because she didn't have money for groceries the next day," Latham said. "My brothers and I have taken a very small retail seed business and built it into something that this community and this district should be proud of."

Seed Corn Business

Latham of Alexander is one of the executives in his family's seed corn business. Just like any family farm operation, he said, he has participated in farm programs.

McGuire, his opponent, questioned why Latham vocally opposes government spending yet accepts hundreds of thousands of dollars in farm subsidies for his family businesses.

Her campaign provided farm program records from the Franklin County Agricultural Stabilization and Conservation Service that indicate the four Latham family businesses — Latham Seed Co., Latham Wright Farm, Latham Kanawha Farm and the Latham Hospital Farm — received about \$300,000 in subsidies since 1987.

"What he is saying is he wants government off our backs and out of our pockets, but he's a millionaire, and he opens his pockets wide and lets money in," she said Tuesday. "He's not calling for an end to that. We're seeing a pattern emerge. Mr. Latham brings in Mr. Armey, but says he doesn't agree with him. Mr.

gent Joss Nichols are among the dozens of Iowans who are sitting by their phones, hoping they'll be chosen for a few seconds of fame by landing a part in the movie starring Clint Eastwood and Meryl Streep.

Casting director James Axotis noticed Arter when she was interviewed on television as she stood in line at Roosevelt High School in Des Moines, waiting to try out to be an extra in the movie. Arter was asked to audition for a speaking role, and she was given a few lines to memorize.

Arter's first reading was for the woman in the restaurant. She read for another part as well — a saleslady who gives Meryl Streep a little advice when Streep's Francesca character goes to Des Moines to buy a pink dress.

The saleslady, according to Arter, thinks Streep is buying the dress in the hope of making up with her

Phased-in curbside recycle program starts off with a

RECYCLE

Continued from Page 1M

gram coordinated by the Metro Waste Authority. The new program takes a greater variety of items than previously accepted by private haulers and the city of Des Moines' yellow-bag program for plastics.

The result was a huge bin turnout that bodes well for the success of the program. The authority predicts each household will put out an average of 7.5 pounds of recyclables each week. Over a year 108,000 households from Des Moines and other area cities will pitch in 20,000 tons.

First-day tonnage late Tuesday afternoon fought to pick up loads of recyclables.

Many people have stuff for weeks in a new program.

Steve Dillinger of Industries, which blebs in the western with residents to put out a little at a trucks are over routes get messed

Artistic Solid W people in the east to take lids off cor The firm leaves th curb with a note e lation.

Tony Colosimo o said he was surpri deposit-carrying s tainers were in the one truck, 15 per were returnable c

THEATER CLOCK**DES MOINES AREA**

"Andre" (PG): Century, Westwood — 2, 4:30, 7, 9
 "Barcelena" (PG-13): Varsity — 7:45, 9:25
 "Beverly Hills Cop III" (R): Value Cinema — 7:10, 9:45
 "Blankman" (PG-13): Westwood — 2
 "Camp Nowhere" (PG): Century, Westwood — 2, 4:30, 7:10, 9:15
 "Clear and Present Danger" (PG-13): Fleur, Forum — 7, 9:45, Westwood — 1:30, 4:15, 7, 9:45
 "The Client" (PG-13): Fleur, Forum — 7:15, 9:45, Westwood — 1:45, 4:15, 7:15, 9:45
 "Color of Night" (R): Forum, SouthRidge — 7, 9:30
 "The Flintstones" (PG): Value Cinema — 7:20, 9:45
 "Forrest Gump" (PG-13): Riviera, Sierra — 7, 9:45
 "I Love Trouble" (PG): Value Cinema — 7, 9:30
 "In the Army Now" (PG): Forum — 7:20, 9:30, Westwood — 4:30, 7:20, 9:30
 "It Could Happen to You" (PG): Sierra — 7:15, 9:45
 "The Lion King" (G): Valley — 7, 8:45, Meric May Mall Cinema — 5:15, 7
 "The Little Rascals" (PG): SouthRidge, Valley — 7:15, 9:15
 "The Mask" (PG-13): SouthRidge — 7:15, 9:30, Valley — 7, 9:15, Century — 1:45, 4:15, 7:15, 9:30, S.E. 14th Drive-in — 8:35
 "Maverick" (PG): Value Cinema — 7:10, 9:45, Billy Joe's Pitcher Show — 4:30, 7, 9:30
 "Milk Money" (PG-13): Century, Westwood — 1:45, 4:15, 7:10, 9:30

"Natural Born Killers" (R): Fleur — 7, 9:30, Century — 1:45, 4:15, 7, 9:30
 "North" (PG): Value Cinema — 7:20
 "Speed" (R): Value Cinema — 7, 9:30, S.E. 14th Drive-in — 10:35
 "True Lies" (R): River Hills — 7, 9:45, Sierra — 7:10, 9:45
 "Wagons East" (PG-13): Fleur — 7:15, 9:30, Century — 2, 4:30, 7:15, 9:30
 "Wolf" (R): Value Cinema — 9:30
 "Wyatt Earp" (PG-13): Value Cinema — 7:30

AMES

"Angels in the Outfield" (PG): Ranch Drive-in — 10:30
 "Clear and Present Danger" (PG-13): Century — 7, 9:40
 "Color of Night" (R): Varsity — 7, 9:30
 "Forrest Gump" (PG-13): Century — 7, 9:40
 "I Love Trouble" (PG): Ranch Drive-in — 12:45
 "Jurassic Park" (PG-13): Mall — 7
 "The Lion King" (G): Ranch Drive-in — 8:30
 "The Mask" (PG-13): Mall — 7:10, 9:10
 "Milk Money" (PG-13): Century — 7:10, 9:20
 "Natural Born Killers" (R): Ames — 7:10, 9:40
 "Wagons East" (PG-13): Mall — 9:15

ANKENY

"Blankman" (PG-13): Paramount — 7:20
 "Clear and Present Danger" (PG-13): Paramount — 7, 9:45
 "Forrest Gump" (PG-13): Paramount — 7:10, 9:50
 "In the Army Now" (PG): Paramount — 7:30, 9:40
 "The Mask" (PG-13): Paramount — 7:15, 9:20
 "Wagons East" (PG-13): Paramount — 9:15

Fly Free



\$109 Fun!

Includes charter flight on Great American Airways to Wendover, two nights at hotels, dining coupons and \$40 in casino credit. For Reservations call 1-800-4

NEXT FLIGHT LEAVES SEPTEMBER 18TH



McGuire
Democrat

Sheila McGuire for the seat being vacated by Fred Grandy.

Latham distanced himself from his fellow Republican by saying, "Dick Arney and I publicly agreed to disagree, as far as agricultural policy. If we only talk to people who support agricultural subsidies, we are going to lose. I will talk to the devil to promote agriculture and small farmers and the need to maintain a safety net. Dick Arney (the third-ranking House GOP leader) asked to come in."

Loyalty Questioned

But the Iowa Democratic Party attacked Latham and questioned his loyalties to agriculture.

So did the Iowa Farmers Union, which said that, given Latham's "background in corporate agribusi-

thing works out, Arter, the 18-year-old Lady from Adair," will recite the "Thelma" line in "The Bridges of Madison County," which will be filmed in Winterset this fall.

Arter and Ames High School student Joss Nichols are among the dozens of Iowans who are sitting by their phones, hoping they'll be chosen for a few seconds of fame by landing a part in the movie starring Clint Eastwood and Meryl Streep.

Casting director James Axotis noticed Arter when she was interviewed on television as she stood in line at Roosevelt High School in Des Moines, waiting to try out to be an extra in the movie. Arter was asked to audition for a speaking role, and she was given a few lines to memorize.

Arter's first reading was for the woman in the restaurant. She read for another part as well — a saleslady who gives Meryl Streep a little advice when Streep's Francesca character goes to Des Moines to buy

Arter said. "I think it would be great if I got one of the parts. I'm not counting on it, but I sure would like it." Arter said she was given two days to learn her lines before the tryout.

become clear, he said, in PAGE 02-02 & WEEK.

"I just want to know said. "But either way, this experience."

Phased-in curbside recycling program starts off with a bar

RECYCLE

Continued from Page 1M

gram coordinated by the Metro Waste Authority. The new program takes a greater variety of items than previously accepted by private haulers and the city of Des Moines' yellow-bag program for plastics.

The result was a huge bin turnout that bodes well for the success of the program. The authority predicts

First-day tonnages were late Tuesday afternoon, fought to pick up unusual loads of recyclables.

Many people had been stuff for weeks in anticipation of the new program.

Steve Dillinger of Brown Industries, which collects in the western suburbs with residents to put their out a little at a time. (trucks are overloaded

9 pages

MEMORANDUM

TO: SUZANNE HELLMAN
FROM: STEVE GIBBS
RE: BRIEFING INFO.
DATE: 9/2/94

=====

LATHAM/SIOUX CITY STOP:

Issues to Stress: Mr. Latham's agriculture and small business background -- i.e. will bring Iowa values to Congress.

Note: Shelia McGuire, Latham's Democratic opponent is an active Harvard professor and physician that was part of Hillary Clinton's health care task force. She was one of the original 43 participants. The majority of her funding is from out of state -- i.e. Emily's List and NOW.

Latham poll done by Opinion Strategies put Latham ahead by: 56-30

Key Attendees: Former Congressman Wilcy Mane
Tom Latham

GANSKE/DES MOINES STOP:

Issues to Stress:

Note: Ganske poll showed him ahead of incumbent Smith by 49 to 34

Key Attendees:

STATE PARTY/CEDAR RAPIDS STOP:

Issues to Stress: The historic opportunities facing the Republican Party this November, especially in Iowa. Mention the Governor's race, Congressional candidates, statewide candidates and Iowa legislative candidates.

Governor Terry Branstad
Lt. Governor Joy Corning
Auditor Dick Johnson
Joe Gunderson for Attorney General
Paul Pate for Sec. of State
Jay Irwin for State Treasurer
Tom Cory for Sec. of Agriculture

CD#1 Jim Leach
CD#2 Jim Nussle
CD#3 Jim Lightfoot
CD#4 Greg Ganske
CD#5 Tom Latham

Note: Party political briefing.

Key Attendees: Rich Schwarm, Chairman of State Party
Jay Irwin, Candidate for State Treasurer

FROM: REPUBLICAN PARTY OF IOWA TO:

SEP 2, 1994 10:58AM P.03



THE REPUBLICAN PARTY OF IOWA

Rick Schwarn, State Chair

Bill Vernon, State Finance Chair

To: Steve Gibbs
From: Terri Hasselman
Date: September 2, 1994
Subject: Political Briefing, State of Iowa

The Iowa Legislature is made up of 100 House seats and 50 Senate seats. All 100 House seats are up for election in 1994, along with half of the Senate seats. Republicans control 74 of the 150 seats.

In 1990 the Republicans picked up seats in the legislature for the first time in 10 years. We gained 6 seats in the House of Representatives. In 1992, we picked up 6 more seats in the House and took control with a slim 51 to 49 majority and 2 seats in the Senate, which put us close at 23 to 27. With the policies of the Clinton administration, we are hoping in 1994 to pick up additional house seats and to pick up 3 seats in the Senate to give us control.

Filing deadline for legislative candidates was Friday, March 18th. Republicans filled 100 out of 125 seats, and left 25 of the Democrats unopposed. Democrats only filled 90 out of 125 races and left 35 of ours without opposition. 33 of those seats are Republican incumbents and 2 are open districts! However, we have 11 House Republicans and 3 Senate Republicans not seeking re-election. We have a minimum of 10 incumbents in the House and 1 incumbent in the Senate that are in vulnerable positions.

The Democrats are not faring much better. They have 13 retirees in the House and 7 retiring in the Senate. We are in a good position of holding control of the House of Representatives and making gains in the State Senate. We have more incumbents seeking re-election in both Houses than the Democrats.

Our incumbent Republican Governor won the primary with a 52% margin over a popular 8 year Congressman from the most Republican Congressional District in the state, Fred Grandy. The Democrat candidate is the current Democrat Attorney General for the State of Iowa.

FROM: REPUBLICAN PARTY OF IOWA TO:

SEP 21 1994 10:59AM P.04

Briefing Memo...Page 2
September 2, 1994

We have three Republican Incumbent Congressmen running for re-election in 1994: Jim Leach, Jim Ross Lightfoot and Jim Nussle. The opponent in the first district against Leach is a former staffer for Senator Harkin. In the 2nd District, former Congressman Dave Nagle (D) is again challenging Congressman Jim Nussle. In the 3rd District, Congressman Jim Lightfoot's opponent is the current Democrat Secretary of State, who ran against him in 1992, garnering 49% of the vote.

In the 4th Congressional District Greg Ganske, a prominent Des Moines reconstructive surgeon, is challenging 36 year Democrat incumbent Neal Smith. With Smith losing his battle for the acting chairmanship of the House Appropriations Committee, and the publicity he received when he made comments about Paula Jones and Bill Clinton, this could help Ganske.

In the 5th Congressional District (Grandy's seat), long-time Republican State Central Committee member, business owner and farmer Tom Latham will be running against a Harvard graduate, physician and Clinton Health care consultant Shiela McGuire. McGuire, during the primary, raised big money from Emily's List. Even though this is the most Republican district in the state, McGuire will be a formidable opponent.

All of the Statewide Executive Offices are up for re-election. Our Republican State Auditor Dick Johnson is running for re-election and we have candidates for Attorney General, Secretary of Agriculture, Secretary of State and State Treasurer. These offices are currently held by Democrats.

The Democrat Secretary of State has announced that she will run against Congressman Jim Lightfoot again, so that will leave the Sec. of State seat open. A liberal Democrat County Auditor from southwest Iowa is running against a popular Republican State Senator from the Cedar Rapids area, Paul Pate.

The Democrat State Treasurer, the Deputy State Treasurer, along with a Democrat State Senator won a lawsuit brought by a former employee in the State Treasurer's office. We had hoped that if they lost, it would have been one of the best campaign issues this year. The plaintiff alleged that she was terminated because of her blowing the whistle on the "Iowa Trust Scandal" in 1991. The Republican candidate is an attorney from West Des Moines, Jay Irwin.

The Democrat Attorney General is running for Governor. A popular former Attorney General, Democrat Tom Miller, is the Democrat candidate. The Republican candidate is Joe Gunderson, a thirty-something attorney from Des Moines.

Tom Cory is the Republican candidate for Secretary of Agriculture, squaring off with an 8 year Democrat incumbent. Cory is an agriculture instructor in a local vocational school.

FROM: REPUBLICAN PARTY OF IOWA TO:

SEP 2, 1994 11:00AM P.05

Wright Briefing Memo...Page 3
September 2, 1994

Democrats have a registration advantage of +89,000 over Republicans, statewide. The fact that Republicans tend to vote in greater percentages in off year elections than do Democrats, would potentially help us, but Democrats are increasing their percentages that vote every election cycle. We must maximize the number of Republicans voting in the 1994 elections to maintain our Governorship, our Congressmen, control of the Iowa House and make gains in the executive branch and the State Senate.

With a very hard fought race for Governor and the political winds still not dying down, November is not very far away! Republicans have their work cut out for them. With Congressman Grandy still looking at a race for Governor this fall, as an Independent, the waters remain muddy here in Iowa on the political scene.

The challenge we have is to convince contributors that our Republican candidates have an excellent chance of winning in both the Iowa House and Senate. Because of the tight gubernatorial race, Republican legislative candidates cannot expect a coattail advantage from Governor Branstad. We are optimistic, however, that rising dissatisfaction with the Clinton Administration and his Democratic Congress will inspire more voters to vote Republican. This is echoed in the numerical advantage that Republicans currently hold over Democrats statewide, a first in many years.

Democrats presently control the Iowa Senate by a majority of 27-23. There are seven Democrat Senators and 3 Republican Senators retiring. Republicans have candidates in nine of these ten open districts. Republicans are also fielding candidates against 3 incumbent Democrat senators, but only one Republican incumbent senator is facing an opponent. While only four Democrat incumbents are unopposed, 8 Republican incumbents are unopposed. Republicans have clearly won the initial recruiting advantage by leaving fewer seats unchallenged.

The goal for Republicans in the Iowa Senate is to retain the seats of the three retiring Republican senators and to pick up an additional three seats. This would give Republicans 26 seats, a majority. To do this we are focusing on ten Senate races.

There is a possibility of two or three special elections after the general election on November 8. One incumbent Republican senator is running for Secretary of State and one incumbent Democrat (who is the existing President of the Senate) is running for Lt. Governor.

A general Characterization of these elections is excellent candidate in tough districts. Almost all of the Republican candidates have an excellent chance of winning. Admittedly, victories in several of the seats up for election that have been held by Democrats would be

FROM: REPUBLICAN PARTY OF IOWA TO:

SEP 2, 1994 11:00AM P.06

an upset. Despite the lopsided voter registration advantage that Democrats enjoy in several of these districts, the high quality of our candidate and their campaign organizations should not be underestimated. They are bright, articulate, and most importantly, committed to winning. Their backgrounds are diverse: business owners, farmers, and career professionals. Six are women.

THURSDAY, SEPTEMBER 8, 1994

Page nineteen

6:15 pm ATTEND/SPEAK Fundraising Reception for Gene Spence

7:00 pm

Location:

Attendance: 150 @ \$25 per person

Event runs:

Press:

Facility:

Format:

Contact: Scott Matter
312/281-1688

7:00 pm DEPART Omaha Club for airport

Driver:

Drive time:

? pm DEPART Omaha for Sioux City IA/Sioux Gateway

FBO: Jetson Aviation

Aircraft: Challenger

Tail number: N25SB

Flight time: 25 minutes

Pilots: Dave Fontanella
Frank Desetto

Seats: 9

Meal: Snack

Manifest: Senator Dole
Mike Glassner
John Atwood
Frank Desetto

Contact: Blanche Durney
203/622-4435
914/997-2145 fax

? ARRIVE Sioux City, IA

FBO: Jetson Aviation
712/258-6563

Met by: Renee Klink, Advance

? DEPART airport for Sioux City Hilton

Driver: Renee Klink

Drive time: 15 minutes

Location: 707 4th Street

FRIDAY, SEPTEMBER 9, 1994

page twenty one

9:30 am DEPART Sioux City for Des Moines/International

FBO: Signature
Aircraft: Challenger
Tail number: N25SB
Flight time: 40 minutes
Pilots: Dave Fontanella
Frank Desetto
Seats: 9
Meal: Snack
Manifest: Senator Dole
Mike Glassner
John Atwood
Chris Swonger
Contact: Blanche Durney
203/622-3345
914/997-2145 fax

10:10 am ARRIVE Des Moines

FBO: Signature
515/285-4221

10:15 am DEPART airport for WHO Radio Station

Driver: John Swanson
515/225-9321
Drive time: 15 minutes
Location: 1800 Grand Avenue

10:30 am ARRIVE WHO Radio Station
515/242-3500

10:30 am- WHO Jan Mickelson Radio Show
11:20 am

11:20 am DEPART Radio Station for Press Avail for Greg Ganske

Driver: John Swanson
Drive time: 10 minutes
Location: Des Moines Marriott
700 Grand Avenue

FRIDAY, SEPTEMBER 9, 1994

page twenty two

11:30 am ARRIVE Des Moines Marriott
515/245-5500

11:30 am- Press Avail for Greg Ganske

12:00N Location: Salon G - 2nd Floor

12:00 pm- ATTEND/SPEAK Fundraising Lunch for Ganske

1:15 pm Location: Salon D
Attendance: 50-100
Event runs: 12:00 - 1:30 pm
Press: Closed
Facility: Rounds of 8, Podium and mic
Format: Greg Ganske gives remarks and introduces Senator
Dole
Senator Dole gives remarks
Mix and mingle
Contact: Terri Hasselman
515/282-8105 (o)
515/243-7863 (h)
Phillip Griffin
512/279-1994

1:15 pm DEPART Lunch for airport

Driver: John Swanson
Drive time: 15 minutes

1:30 pm ARRIVE airport and proceed to departing aircraft

FBO: Signature
515/285-4221

FRIDAY, SEPTEMBER 9, 1994

page twenty three

1:35 pm DEPART Des Moines for Cedar Rapids/Municipal

FBO: Signature
Aircraft: Challenger
Tail number: N25SB
Flight time: 30 minutes
Pilots: Dave Fontanella
Frank Desetto
Seats: 9
Meal: None
Manifest: Senator Dole
Mike Glassner
John Atwood
Chris Swonger
Contact: Blanche Durney
203/622-4435
914/997-2145 fax

2:05 pm ARRIVE Cedar Rapids

FBO: Signature
319/366-1925

2:10 pm DEPART airport for Round Table Fundrasier for State Party

Driver: Bill Courter
319/365-9461
Drive time: 10 minutes
Location: Five Seasons Hotel
350 1st Avenue NE

2:20 pm ARRIVE Five Seasons Hotel
319/363-8161

2:20 pm- ATTEND/SPEAK Round Table Fundraiser for State Party

3:00 pm Location: Regency Rooms 1 & 2 - 16th Floor
Attendance: 25-30
Event runs: 2:00 - 3:00 pm
Press: Closed
Facility: Hollow square seating
Format: Rich Schwarm introduces Senator Dole
Senator Dole gives remarks
Informal discussion
Contact: Kathleen Masteller
515/282-8105 (o)

FRIDAY, SEPTEMBER 9, 1994

page twenty four

3:00 pm- Press Avail with Chairman Rich Schwarm and statewide candidates

3:30 pm Location: Seasons B - 4th Floor
 Candidates: Jay Irwin, candidate for State Treasurer
 Tom Cory, candidate for Secretary of Agriculture
 Joy Corning, Lt. Governor
 Format: Chairman Schwarm introduces Senator Dole
 Senator Dole gives remarks and introduces each
 candidate
 Candidates give brief remarks
 Q & A

3:30 pm DEPART hotel for airport

 Driver: Jim Arenson
 319/849-1233 (o)
 Bill Courter
 319/365-9461
 Drive time: 10 minutes

3:40 pm ARRIVE airport and proceed to departing aircraft

 FBO: Signature
 319/366-1925

3:45 pm DEPART Cedar Rapids for Davenport/Municipal

 FBO: Carver Aero
 Aircraft: Challenger
 Tail number: N25SB
 Flight time: 25 minutes
 Pilots: Dave Fontanella
 Frank Desetto
 Seats: 9
 Meal: None
 Manifest: Senator Dole
 Mike Glassner
 John Atwood
 Chris Swonger
 Contact: Blanche Durney
 203/622-4435

4:10 pm ARRIVE Davenport

 FBO: Carver Aero
 319/391-5650

page twenty five

FRIDAY, SEPTEMBER 9, 1994

4:15 pm DEPART airport for Press Avail
Driver:
Drive time: 15 minutes
Location:

4:30 pm Press Avail with Barbara Grassley
5:00 pm Location:

5:00 pm- ATTEND/SPEAK Grassley PAC Reception Fundraiser
6:00 pm Location:
Attendance:
Event runs:
Press:
Facility:
Format:
Contact:

6:00 pm DEPART Reception for airport
Driver:
Drive time: 15 minutes

6:15 pm ARRIVE airport and proceed to departing aircraft
FBO: Carver Aero
319/391-5650

6:20 pm DEPART Davenport for Hutchinson, KS/Municipal
FBO: Wells Aircraft
Aircraft: Challenger
Tail number: N25SB
Flight time: 1 hour 20 minutes
Pilots: Dave Fontanella
Frank Desetto
Seats: 9
Meal: Dinner
Manifest: Senator Dole
Mike Glassner
John Atwood
Chris Swonger
Contact: Blanche Durney
203/622-4435

BIOS

IOWA

Richard P. Schwarm **Chairman**



Present

Chairman, Republican State Central Committee of Iowa,
elected - February 4, 1989
Executive Director, Republican State Central Committee of
Iowa, 1992 -
Member, Republican State Central Committee, 1985 -
Practicing Attorney, 1974 -

Previous

Chairman, Iowa Victory '92 Committee
Director, Iowans Against Gerrymandering
Member, Governor Branstad's Campaign Steering Committee,
1978, 1982, 1986, 1990
Member, Congressman Fred Grandy's Steering Committee,
1986

RNC Activity

Member, Committee on Call, Republican National Convention,
1992
Delegate, Republican National Convention, 1992
Assistant Legal Counsel to Rules Committee, Republican
National Convention, 1984

Personal

Spouse: Charise
Children: Two
Education: B.A., Morningside College;
J.D., Drake University

(cont.)

IOWA

Stephen W. Roberts National Committeeman



Present

National Committeeman, Iowa, elected - August 16, 1988
President, Mid-Iowa Council, Boy Scouts of America, 1991 - 1993
Chairman of the Board, American Cancer Society, IA Division, Inc., 1989 - 1993
Member, Committee to Nominate Alumni Trustees, Princeton University, 1991 - 1993
Member, Des Moines "Y" Camp Board, 1982 -
Member, Board of Directors, Iowa Association of Business and Industry, 1988 -
Senior Shareholder, Davis, Hockenburg, Wine, Brown, Koehn and Shors, P.C.

Previous

Chairman, Iowa Republican Party, 1977 - 1981
Member, Republican National Committee, 1977 - 1981
Moderator, Des Moines Presbytery, 1989
Member, Iowa Criminal & Juvenile Justice Planning Agency, 1982 - 1986
Member, United States Department of Education Appeal Board, 1982 - 1986
Member, Iowa Reapportionment Commission, 1981
Member, Board of Directors, Des Moines Center of Science and Industry, 1984 - 1990
Member, University of Michigan Law School Fund National Committee, 1982 - 1988
Member, Polk County Charter Commission, 1989 - 1990
Member, Greater Des Moines Area Commission, 1990 - 1991

(cont.)

IOWA

Gwen Boeke National Committeewoman



Present

National Committeewoman, Iowa, elected - August 22, 1984
Advisory Board, Iowa Federation of Republican Women, 1972 -
Regent, Wartburg College, 1986 -
Iowa Representative, Foundation of Evangelical Lutheran
Church in America, 1990 -
Iowa Board of Engineers and Land Surveyors, 1993 -
Trustee, Century Companies of America, 1988 -
Registered Nurse

Previous

Executive Board, Iowa Federation of Republican Women,
1976 - 1984
President, Iowa Federation of Republican Women, 1982 - 1983
Advisory Board, NFRW, 1982 - 1983
Chairman, Midwest Republican Leadership Conference, 1987
National Church Council, 1980 - 1990
Member, National Executive Committee, American Lutheran
Church, 1984 - 1988
Chairman, Care Review Committee, Evans Memorial Home,
1973 - 1992
Iowa Board of Architectural Examiners, 1987 - 1993

RNC Activity

Member, Committee on Arrangements, Republican National
Convention, 1988, 1992
Member, Committee on Rules, Republican National
Convention, 1988
Delegate, Republican National Convention, 1988

(cont.)

Latham event

Latham **THE DISTRICT**

The 5th Congressional District of Iowa is a mostly rural district that includes 30 counties in North Central and Northwest Iowa. It is the only Congressional District in Iowa where registered Republicans outnumber Democrats. There are currently 110,309 registered Republicans, 101,038 registered Democrats, and 96,415 registered Independents.

The tendency of 5th District voters to support Republican candidates for Congress is even more evident when you consider the past three general elections. In his first reelection campaign in 1988, Republican Congressman Fred Grandy defeated a well-known Democrat attorney by more than 55-thousand votes. In 1990, Congressman Grandy was reelected with 72 percent of the vote, and in 1992, Democrats could not find anyone willing to run against Congressman Grandy.

Ideologically, the majority of 5th District voters (Republicans, Democrats, Independents) classify themselves as conservative and pro-life; a definite plus for Tom Latham, the only conservative candidate and only pro-life candidate in the 5th District race.

Latham **THE CANDIDATE**

When Tom Latham announced his bid for Congress, a Sioux City businessman noted that; "if you want a candidate for Congress who mirrors the characteristics of Iowa's 5th Congressional District, Tom Latham is that candidate."

Tom Latham was raised on a 4th generation farm near Alexander, Iowa. In 1947, his father started a small seed company by producing and selling seed to local farmers. Tom Latham and two of his brothers later joined their father and helped build Latham Seeds into a thriving regional seed producer with sales personnel and customers in five Midwestern states. Tom is now Vice-President and co-owner of Latham Seeds.

Tom and his wife Kathy have three children, Justin, Jennifer, and Jill.

In addition to raising a family and building a business, Tom Latham is active in his church and community organizations. Tom was elected to the Iowa Republican State Central Committee where he served as the Secretary, and was a member of Congressman Fred Grandy's Agriculture Advisory Committee.

Latham **THE PRIMARY**

Tom Latham's landslide victory in the June 7th Iowa Republican Primary Election is a strong indication of the kind of campaign you can expect to see in the general election.

Latham faced a state senator whose senate district includes the 5th Congressional District's most populated county and dominant media market. Many Iowa political reporters and party insiders predicted a "toss-up" race with the edge going to Tom Latham's opponent. However, when the ballots were counted, Latham won the primary with 62 percent of the vote. Moreover, Latham won all but two of the district's 30 counties, losing one of those two counties by only 350 votes.

Even though many traditional Republican donors chose to remain neutral in the primary, the Latham campaign was able to raise more than \$100,000.

The Latham campaign also emerged from the primary with organized leadership in place in every county of the 5th Congressional District ready for battle in the general election.

Latham **THE OPPONENT**

Dr. Sheila McGuire is a 33-year-old assistant professor at Harvard University. Despite graduate training in dentistry, Dr. McGuire has never actually cared for patients in private practice. Professor McGuire also runs a health care consulting business in Boone, Iowa.

During her three-way primary race, Sheila McGuire claimed credit for helping to shape the Clinton Health Care Plan. In fact, it was clear that McGuire's single issue campaign will be based on her credentials as a "health care expert."

McGuire was the only candidate of either party in the primary who did not wholeheartedly endorse term limits for members of Congress.

Latham **POLLING**

A survey was conducted following Tom Latham's landslide primary victory. While likely voters were asked whom they planned to support in the general election, they chose Tom Latham by a margin of nearly 16 percent over his opponent, Dr. Sheila McGuire.

The Latham for Congress Campaign has now hired Neil Newhouse of Public Opinion Strategies to provide survey research.

Latham **ADVANTAGE**

The numbers tell the story in Iowa's 5th District race for Congress. First, the registration numbers, registered Republicans outnumber registered Democrats by 9,000 voters. Secondly, the primary election numbers - Tom Latham received more than 47,000 votes on June 7, while Sheila McGuire received fewer than 13,000 votes. Tom Latham received 62 percent of his party's votes while Sheila McGuire received 54 percent of her party's votes.

A record number of Republicans (more than 75,000) went to the polls on June 7. The three Democrat candidates combined received fewer votes (24,713) than Tom Latham alone received (47,387).

The last time a Republican faced a Democrat for Congress in the 5th District (1990) the Republican won with 72 percent of the vote.

During the general election campaign, 45-year-old Tom Latham will offer voters more than 25 years of farm and business experience. His opponent, 33-year-old Dr. Sheila McGuire will offer voters her experience as a student and University professor.

One look at the numbers and it is easy to tell which candidate most closely reflects the average voter in this predominantly rural, predominantly conservative, and predominantly Republican district Tom Latham.

Latham **THE TEAM**

MANAGER:

VICKY VERMAAT

Managed two successful campaigns for Republican Congressman Fred Grandy who has decided not to seek reelection in the 5th Congressional District.

**GENERAL
CONSULTANT:**

RICHARD P. SCHWARM

POLLSTER:

**PUBLIC OPINION STRATEGIES
NEIL NEWHOUSE**

**PAC
CONSULTANT:**

CAROLE GOEAS

**MEDIA
CONSULTANT:**

JS/DAY & ASSOCIATES
Des Moines, Iowa

F.E.C. ID NUMBER: 042494

**LATHAM FOR CONGRESS
POST OFFICE BOX 117
ORANGE CITY, IOWA 51041**

**712-737-8708
FAX 737-3456**

PAID FOR BY LATHAM FOR CONGRESS

Greg Ganske

SEP-07-94 FRI 03:24 PM

Ganske Congress

BIOGRAPHY

Greg Ganske, M.D. is the Republican candidate for Congress for the Fourth Congressional District in Iowa (IA-04). Greg was born 3/31/49 in New Hampton, Iowa, the son of Vic and Mary Jo Ganske. He grew up in Manchester, Iowa, which is a small town in northeast Iowa. As a young man, Greg learned the value of hard work by working in his dad's grocery store. In high school Greg won medals in wrestling and wrote for the school paper.

Greg worked his way through college at the University of Iowa and graduated with honors in political science and general science in 1972. Greg met his wife, Corrine, while both were students at the University of Iowa School of Medicine. They've been happily married for 18 years and have three children, Ingrid, Brigit, and Karl.

Greg completed general surgery training at the Oregon Health Sciences Center, and plastic and reconstructive surgery training under Nobel laureate Joe Murray at Harvard in 1982. He and Corrine, a family practice doctor, decided to locate their practices closer to their families and have lived in Des Moines, Iowa since. For the past ten years, Greg has been in solo medical practice doing reconstructive surgery, helping Iowans with birth defects, farmers with severe hand injuries, women with cancer, and victims of crime with traumatic injuries.

As a Lt. Colonel in the USAR, Greg thinks our country's military preparedness is important; as an active manager of 160 acres of farmland, he is aware of the importance of agriculture to Iowa's economy; and as a small businessman, he will fight to reduce overregulation by big government.

Greg is running for office because, like most Iowans, he is fed up with the job that Congress has been doing. "What do 36 year career politicians like Neal Smith always do? They blame each other, spend more money, and then raise your taxes. If our Congressman won't change, then it's time to change our Congressman." Greg Ganske thinks we need real welfare reform and to balance the budget. "I don't want to leave my kids with a socially or economically bankrupt country."

People for Ganske
3907 Grand Avenue
Des Moines, Iowa 50312
515-279-1994
fax 515-279-3841

Paid for by People for Ganske. Political contributions are not deductible as charitable contributions for federal income tax purposes. Corporate contributions prohibited by law.



Ganske Congress

Greg Ganske

Family : Wife - Corrine M. Ganske, M.D.
Children - Ingrid, Briget, Karl

Occupation : Plastic & Reconstructive Surgeon - Des Moines, Iowa

Education : University of Iowa, B.A. with Honors, Political Science
and General Science, 1972

Medical School : University of Iowa Medical School, M.D., 1976

**Postdoctoral
Training :** University of Colorado Medical Center
Denver, Colorado, General Surgery, 1976-1978

University of Oregon Health Science Center
Portland, Oregon, General Surgery, 1978-1982

Harvard Medical School
Boston, Massachusetts, Plastic Surgery, 1982-1984

Military : Lt. Col., Medical Corp, USAR

People for Ganske
5907 Grand Avenue
Des Moines, Iowa 50312
515-279-1994
fax 515-279-3841



FEATURE

WORDS OF POLITICAL CANDIDATE GREG GANSKE

Q. Why are you running for Congress?

A. Because I fear my three children will not have the opportunities their parents and grandparents had.

Greg Ganske was only 9 years old when Des Moines Attorney Neal Smith was first elected to Congress. The year was 1958. Dwight D. Eisenhower was the US President, Elvis Presley was in the Army, and cars had fins. Now, at age 44, Dr. Greg Ganske is running for Congress in Iowa's 4th District, determined to unseat Neal Smith.

Dr. Ganske, A Des Moines Plastic & Reconstructive Surgeon, says, "Professional politicians in Washington like Neal Smith are mortgaging our children's future." "They've

created a \$4 trillion national debt that threatens our financial security and greatly inhibits our ability to address other serious problems."



Dr. Ganske grew up in small town Iowa, sacking potatoes in his father's grocery store and competing on his high school wrestling team. He competed at the state wrestling tournament where he shared a locker with future Olympic Champion Dan Gable (who contributed to Greg's campaign). "All I need to do to get enthusiastic about this political campaign is to watch Dan Gable's motivational videotape!" exclaims Ganske.

After obtaining his undergraduate degree in Political Science and medical degree from the University of Iowa Medical School, he later completed postdoctoral training at the University of Colorado, University of Oregon, and Harvard Medical School. While attending medical school, he met his wife, Corrine, a

family practice doctor who teaches in a Des Moines family practice residency program.

Most political pundits would agree that defeating a 35-year incumbent congressman is no easy task, but Greg Ganske thinks Iowa voters are ready for change. "When I talk to people around the 4th Congressional District, it's clear there is a great deal of dissatisfaction with business as usual in Washington. Most people don't like the idea of paying more in taxes just so career politicians like Neal Smith can vote themselves a huge pay raise. And, they don't like the idea that 60 cents of every dollar we pay in income taxes goes to pay the interest on the national debt."

To reduce the national debt, Dr. Ganske says government should reduce spending and review the cost/benefit ratio of all government programs, including automatic increases in entitlement. "Neal Smith has voted for nearly every tax increase and spending bill in the last 35 years, including the largest retroactive income and estate tax increase in history," continues Ganske. "Clearly, Congressman Smith is out of touch

with the voters in his district."

As a physician, Ganske is obviously concerned about health care reform. "I believe price controls, and overregulation, as proposed in the Clinton Health Plan, will only lead to decreased quality, long waiting lines, obsolete facilities and uncaring bureaucracies," says Dr.

Ganske. "We need to cut back on paperwork and decrease unnecessary defensive medicine."

"In the last four years, we have seen the private insurance sector coming to grips with the problem of health care costs either through increased deductibles or HMOs."

"In addition, we have succeeded in re-establishing some sense of personal responsibility for the private sector in terms of consumers and providers. That is reflected in a medical inflation rate in the private sector that is approaching the nation's inflation rate," says Ganske.

He continues, "Interestingly, Medicare and Medicaid are experiencing dramatic increase because these government programs have not effectively addressed the issue of personal responsibility in terms of health care costs." Greg favors

Defeating a 35-year incumbent is no easy task, but Greg Ganske thinks Iowa voters are ready for a change...

free market approaches such as medical savings accounts, but he thinks that whatever system evolves will need input from "someone who has been there."

Dr. Ganske feels crime is one of the issues that most clearly defines the differences between himself and Neal Smith. "I've been on the front line taking care of those crime victims. I want to make crimes more costly to the criminal."

"Neal Smith has consistently protected criminal's rights at the expense of law abiding citizens," continues Ganske. "Mr. Smith voted against mandatory minimum sentences for criminals who use firearms to commit crimes and he opposed both the Brady bill and a nationwide computerized network intended to prevent convicted felons

from purchasing handguns. He also favors allowing convicted criminals a seemingly endless number of appeals at taxpayers' expense."

Dr. Ganske says he still very much enjoys practicing medicine and plans to return to his practice after serving in Congress. "I strongly believe in term limits," Ganske adds. "The time has come to return to a citizen legislature comprised of people from all walks of life, not just career politicians."

Even though he will not officially announce his candidacy until 1994, Ganske has already received support from some key Des Moines business leaders as well as numerous physicians across the US. He also received a vote of support from the Iowa Medical Society's Board of Directors. *

It's the little things!

HAWKEYE BANK

CAPITAL E. 9th & Locust 548-7700	DRAKE 2401 University 548-7710	HUBBELL 2428 Hubbell 548-7722	BURKE MAY 4043 Maple Hwy 548-7700	SKYWAY 804 Locust, 3rd Floor 548-7700	LAMARDALE 2501 84th Street 548-7700	WEST DES MOINES 1000 34th Street 548-7700
---	---	--	--	--	--	--

Member FDIC

Ganske wants to drive Smith out of office

GANSKE

Continued from Page 1M

Altoona who is considered one of the most powerful members of Congress, said he had no problem with Ganske's strategy.

"He's using it because there has been some feeling in the general public that there ought to be changes. The public has made them. After the next election, 60 percent of the House will have been in Congress less than five years. We need some institutional knowledge here," Smith said. "We need knowledge so as to warn the new ones against making the same mistakes of past generations. We need a mix."

All Smith asks of his opponents is truth in campaigning.

"I've been here since 1958. Some people would view that as a plus. They know that it helps to get things done for Iowa. On the other hand, if somebody thinks that's too long, it's a legitimate issue. I'm very willing to discuss any legitimate issue based on facts."

Smith said from his office in Washington, "When I was elected, I had a '53 Chevy. I didn't have anything as fancy as a DeSoto. I'd like to buy that DeSoto after the campaign's over and drive it back here in January."

'A STRONG VISUAL IMAGE'

Ganske expects to drive campaign message home

By PHOEBE WALL HOWARD

REGISTER STAFF WRITER

Dr. Greg Ganske is trying to drive U.S. Rep. Neal Smith out of Congress.

Literally.

Ganske, a Des Moines Republican, has decided that instead of telling Iowans how long the state's senior member of Congress has held office, he'd show them.

So the 45-year-old plastic surgeon found a classified listing for a 1958 DeSoto that had spent about 20 years in a farmer's field in Stuart, and he bought the car for about \$1,000. He unveiled his "Nealmobile" on Tuesday; it will be used for campaigning.

"Neal Smith was elected in 1958. Thirty-six years ago," Ganske said. "Half the people I talk to on the campaign trail weren't even born in 1958. The car is a strong visual image that it's time for a change."

Smith began his career in Con-

gress back when Ike and Mamie lived in the White House, Elvis was in the U.S. Army, and cars had big fins, Ganske said.

"That's also when we started accumulating this great big national debt. The car serves as an example of just how long Neal Smith has been in Congress spending our taxpayer dollars."

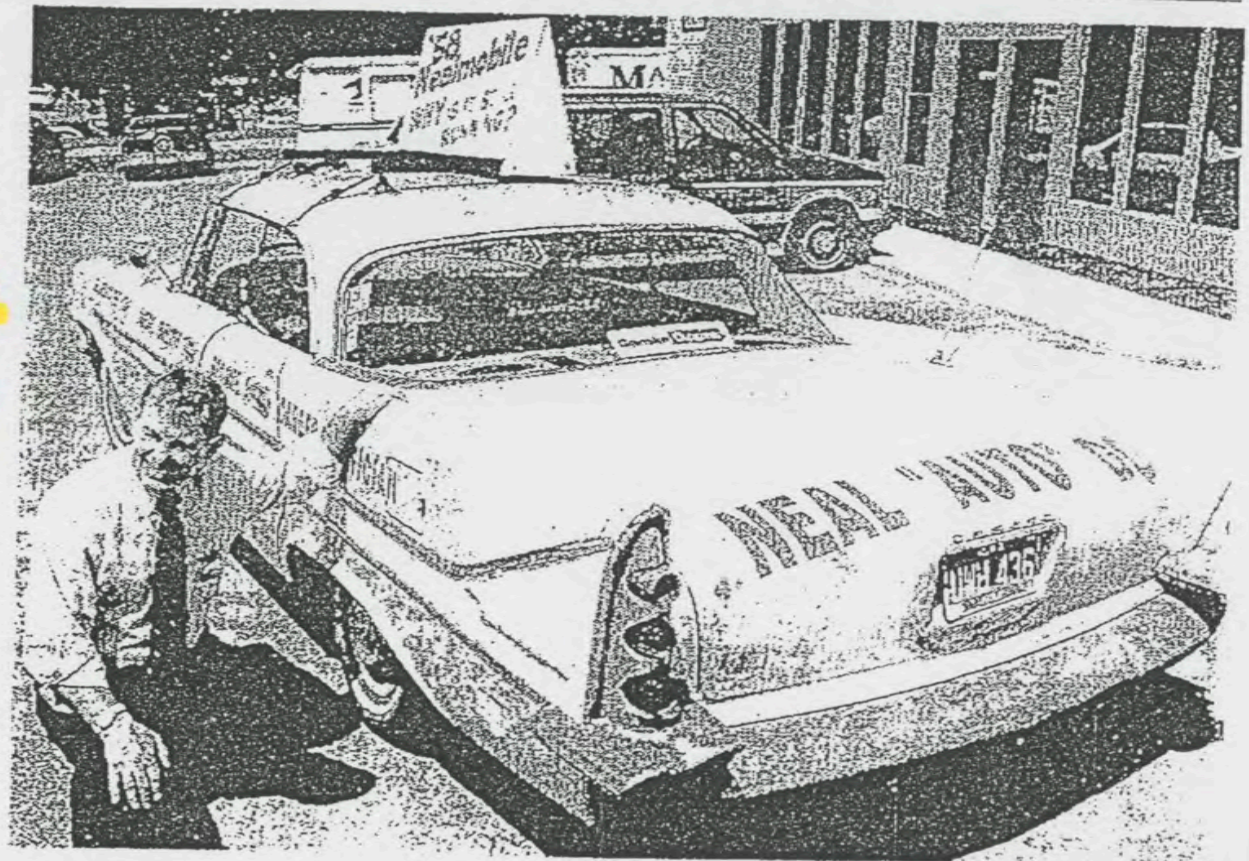
Smith represents Iowa's 4th District, which covers the southwest section of the state and includes Polk County.

During a trip to Washington, D.C., for a Republican get-together, Ganske talked with House Minority Whip Newt Gingrich of Georgia, who thought up the DeSoto idea.

"We'll have some fun with this campaign," Ganske said. "We are not planning on a negative campaign. We're just going to talk about the issues."

Smith, a 74-year-old lawyer from

GANSKE Please turn to Page 4M



Dr. Greg Ganske, a Republican candidate for Congress, shows off his "Nealmobile," a 1958 DeSoto festooned with signs poking fun at Ganske's opponent, incumbent Democratic

Congressman Neal Smith. Smith, who has served in Congress since 1958, has offered to buy the car from Ganske after the election to "drive it back" to Washington.

BOB NANDELL/THE REGISTER

Sen. Grassley

MISC.

IOWA GOP EVENT

Iowa

September 2, 1994

TO: SENATOR DOLE
FROM: DAVE SPEARS

SUBJECT: BRIEFING POINTS - IOWA - GRASSLEY

AS EXPECTED THE AG. AND RURAL ISSUES IMPORTANT IN IOWA ARE THE SAME AS THE REST OF THE MIDWEST. THE BIGGEST CONCERN IN IOWA SEEMS TO BE THE LEVEL OF GOV'T CONTROL IN PEOPLE'S LIVES. THEREFORE, PRIVATE PROPERTY RIGHTS IS A BIG ISSUE.

THE AG. GROUPS ARE EQUALLY CONCERNED WITH THE ENVIRONMENTAL MOVEMENT. SO MUCH THAT SEN. GRASSLEY'S AG. STAFF PERSON HAS A ENVIRONMENTAL BACKGROUND VERSUS A AG. BACKGROUND.

THE FUTURE OF CRP IS ALSO VERY IMPORTANT IN SOME PARTS OF IOWA. MOST WANT TO SEE THE PROGRAM EXTENDED. AGAIN MOST AGREE IN D.C. THAT SOME TYPE OF CRP WILL BE EXTENDED, HOWEVER IT MAY BE TARGETED IN A DIFFERENT DIRECTION AND PAYMENTS ARE EXPECTED TO BE LOWER WITH BUDGET CONCERNS.

OF COURSE ETHANOL REMAINS A KEY ISSUE AS WELL.

September 1, 1994

TO: Senator Dole
FROM: Janet Sena
SUBJECT: Iowa Issues update

ENERGY

Ethanol vote continues to receive lots of positive coverage. Support for the EPA rule requiring 30% ethanol.

DOE is proposing a regulation to have electric water heaters meet a high level of efficiency that may cause rural areas problems. Although they are grandfathering in existing water heaters, they will have trouble meeting the standard. DOE's answer is that individuals can switch to natural gas - not really an option in rural Iowa.

ENVIRONMENT

CLEAN WATER - Concern over this issue in the state. Rep. Mineta may seek to move a straight funding bill in the house, but Sen. Baucus will wait. Most likely dead this year.

TRANSPORTATION

President Clinton intervened on the railroad strike last week. Sioux Line Railroad (1,000 workers) had been on strike for five weeks opposing reductions in crews and wages. Tensions were increasing with the upcoming harvest and the union threatened to create a nationwide strike. Strikers were ordered back to work while negotiations continue.

TO: Senator Dole
FROM: Mike Torrey
SUBJECT: Ag update

September 1, 1994

USDA REORGANIZATION... This legislation will close approximately 1200 field offices nation wide and save the government close to \$1 billion over 5 years. The bill has passed the Senate twice now but has not passed the House. However, the House will take up the bill during Conference of crop insurance since USDA Reorganization was attached. Kansas will lose 2-5 offices.

CRP... Most farmer callers want to know if the Conservation Reserve Program will be extended. Predictions now assume that the program will be extended in some form. There may be fewer acres and those acres may be targeted to environmentally sensitive areas (waterways, ponds, etc...) Also, the payment rate will most likely be less due to budget constraints.

CROP INSURANCE REFORM... Crop insurance reform has now passed the House and Senate and they will go to Conference when Congress comes back. The package is lean and mean. Under reform, disaster programs are eliminated. Instead, that money (approximately \$1 billion annually) is put towards the crop insurance program. The funds are used to buy down premium increases in the out years. We will watch this package closely as it moves through Conference.

MARKETS... The big news is hogs dropped between \$3-\$4.50 this week mostly due to high supply going into Labor Day. Hogs are now around \$39. Break even for good producers is \$38. Cattle are around \$67. Crops were mostly steady with some concern that USDA has overestimated crop production. A crop report is due out on September 12.

FARM BILL... This will be debated in 1995. There will be 3 driving factors. Environment, budget, and urban politics. You should be aware that there is a strong move to reauthorize the Farm Bill in the GATT Implementing legislation. You are on record opposing loading GATT up with such items as dairy. However, if the Administration includes dairy, then it may be worth taking a look at the Farm Bill. USTR and USDA are looking at the legalities of doing this. If we were to revert back to Farm Bill standing authorization, that would be the 1949 Act which is GATT illegal. **BOTTOM LINE**—we are taking a close look at all the options. However, Senator Leahy has so far refused to mark up GATT implementing language.

GREEN BOX... The Administration is charging agriculture \$1.7 billion to pay for GATT. Agriculture is claiming their fair share is around \$800 million. The ag groups would like the difference to be put towards GATT legal programs or green box. These include the Market Promotion Program, Foreign Market Development, and TEFAP. You did not sign a letter supporting these efforts since the ag groups have not come up with offsets.

EEP... Funding was cut by \$150 million in the Senate so total EEP spending is \$850 million. We must now go to Conference with the House to determine a final spending level. You have supported efforts to spend EEP to the maximum allowable level.

HOTLINE 8/30/94

*16 IOWA: IN FIRST TV AD, CAMPBELL GOES AFTER GRANDY VOTE

AG Bonnie Campbell (D) "makes a direct appeal to disgruntled Republicans" in her first TV spot of the fall campaign. In the 30-second spot, Campbell praises Rep. Fred Grandy (R-05) for an "honest and candid" primary campaign against Gov. Terry Branstad (R), adding Grandy "offered Iowa voters a lot in the race for governor": "He believed that Iowa needs a change after 12 years of Terry Branstad." Campbell aide Phil Roeder "said the ad is designed to attract disgruntled Grandy supporters": "More and more Iowans who supported Congressman Grandy in June have indicated they are looking to Bonnie Campbell in November." Branstad spokesperson Dave Kochel: "Fred Grandy was talking about tax cuts; Bonnie Campbell's against tax cuts. Fred Grandy was talking about reinstating the death penalty; Bonnie Campbell's against that. Bonnie Campbell's no Fred Grandy." The ad was to begin airing 8/28 in Sioux City, Grandy's home town (AP/ Cedar Rapids GAZETTE, 8/27).

STRAW POLL: Campbell was more popular than Branstad with people at the IA State Fair, according to a straw poll conducted by the IA Sec/State. Campbell was favored by 52% of the 5,447 people polled. Branstad was favored by 48% (Webber, Dubuque TELEGRAPH-HERALD, 8/28).

HOTLINE 8/25/94

*16 IOWA: CAMPBELL RETURNS FIRE IN HER FIRST RADIO AD

Cedar Rapids GAZETTE's Boehart reports that AG Bonnie Campbell (D) is "returning fire" on Gov. Terry Branstad (R) this week with her first radio ad. Even before the "traditional Labor Day kickoff," the race has been "peppered with political pyrotechnics" (8/24). The 60-second Campbell spot challenges Branstad's image of himself as a fiscal conservative who is tough on crime and fights for ordinary people by portraying him as a "big spender" who "takes care of political contributors." Branstad manager Brian Kennedy dismissed the ad as "mud-slinging and name-calling" (Fogarty, DES MOINES REGISTER, 8/24). Campbell spokesperson Joe Condo said Branstad is the one "engaging in smear tactics": "He can't win unless he can define Bonnie as a whacked out liberal. They're going to try to do that, no matter what we say on any issue" (GAZETTE, 8/24).

A SILENT ATTACK: REGISTER's Roos reports that Campbell has "accused" the Christian Coalition of "trying to distort her religious beliefs." Campbell said that she has been made the target of a "whisper campaign" and wanted to "set the record straight about her faith." After a speech on "Faith and Politics" at the First Baptist Church in Des Moines, Campbell told reporters someone had informed her that people were spreading rumors of her "godless beliefs and so forth." IA Christian Coalition Dir. Tom Moore: "We have never made any comments about her Christianity or her faith. She's a Christian. I'm a Christian. We differ on the issues ... [But] she has tried to say that we're not Christians ... That's only going to add fuel to the fire." Campbell: "I used my faith to promote my beliefs ... but never have I distorted someone else's faith, and that's already happening this year and in this campaign ... What we have at work now in our society is a backlash. People are so concerned about the breakdown of the family, the breakdown of communities that we're all in search of the simple answer." Campbell added that although IA is "largely a Christian state," people of other faiths "must also feel welcome" and state laws "must be written with everyone in mind" (8/22).

A POLICY GENIUS? A REGISTER editorial under the header, "Recognizing Terry's Genius": "Governor-for-Life Terry Branstad is a genius ... Nobody but a genius could have come up with a plan for state government like he did the other day ... He announced that if he is elected, again, he is going to cut taxes and increase services ... Wow! What a platform! You have to wonder why nobody came up with it before ... Some of his opponents over the years have promised to increase services, but they neglected to promise tax cuts. Others have pledged tax cuts, but at the expense of services. Only Branstad has had the vision and imagination to promise both" (8/21).

DM REG
9-7-94

Latham's link to lawmaker stirs criticism

The candidate defends his ties to Texan Dick Armey, a critic of farm policy.

By **PHOEBE WALL HOWARD**
REGISTER STAFF WRITER

Fifth District congressional candidate Tom Latham has come under fire for being host to a Texas congressman deemed by farm groups as anti-farmer and anti-farm family.

At issue is an Iowa appearance on behalf of Latham by U.S. Rep. Dick Armey, a Texas Republican and one of the nation's leading critics of farm policy.

During his appearance Aug. 23, Armey appeared at a fund-raiser for Latham in Denison and said in an interview: "The market will determine the optimal number of farmers at the optimal size."

The Fifth District, which is in northwest Iowa, gets the most benefits of any Iowa district from federal farm programs, according to an analysis of federal records. Latham is running against Democrat Sheila McGuire for the seat being vacated by Fred Grandy.

Latham distanced himself from his fellow Republican by saying, "Dick Armey and I publicly agreed to disagree, as far as agricultural policy. If we only talk to people who support agricultural subsidies, we are going to lose. I will talk to the devil to promote agriculture and small farmers and the need to maintain a safety net. Dick Armey (the third-ranking House GOP leader) asked to come in."



Latham
Republican



McGuire
Democrat

Loyalty Questioned

But the Iowa Democratic Party attacked Latham and questioned his loyalties to agriculture.

So did the Iowa Farmers Union, which said that, given Latham's "background in corporate agribusiness," the group was "nervous about whose interests he would be serving in Congress. The family farm is different from a big corporation like Latham Seed."

Latham, a partner in four family farm units, said he considers himself a family farmer and anyone who suggests he represents big business is being ridiculous.

"I'm just like a lot of farmers: I have assets but very little cash. I'm proud of what we have done, my two brothers and my parents, coming from a small farm with five boys. I can remember when my mother was crying at supper because she didn't have money for groceries the next day," Latham said. "My brothers and I have taken a very small retail seed business and built it into something that this community and this district should be proud of."

Seed Corn Business

Latham of Alexander is one of the executives in his family's seed corn business. Just like any family farm operation, he said, he has participated in farm programs.

McGuire, his opponent, questioned why Latham vocally opposes government spending yet accepts hundreds of thousands of dollars in farm subsidies for his family businesses.

Her campaign provided farm program records from the Franklin County Agricultural Stabilization and Conservation Service that indicate the four Latham family businesses — Latham Seed Co., Latham Wright Farm, Latham Kanawha Farm and the Latham Hospital Farm — received about \$300,000 in subsidies since 1987.

"What he is saying is he wants government off our backs and out of our pockets, but he's a millionaire, and he opens his pockets wide and lets money in," she said Tuesday. "He's not calling for an end to that. We're seeing a pattern emerge. Mr. Latham brings in Mr. Armey, but says he doesn't agree with him. Mr. Latham says he's for cutting government but he accepts large amounts of subsidies. He's hypocritical."

DES MOINES REG 9-4-94

George ANTHIAN

A mobster in our midst?

Washington, D.C. — Many farmers may be restive over their federal subsidies, but when a politician in a big agricultural district holds up a chief critic of farm programs as a champion, it seems a bit unconventional.

Recently, Tom Latham, a Republican running for the U.S. House seat being vacated by Rep. Fred Grandy in northwest Iowa, imported the GOP's third-ranking House leader, Rep. Dick Armey of Texas. Armey is a leading practitioner of the GOP's crude, new in-your-face style and once likened the House Agriculture Committee to a bunch of Al Capone-era gangsters.

When it comes to agriculture, Armey is too far afield even for Mr. Pug-nacious, Rep. Newt Gingrich of Georgia, who's set to become the Republican House leader next year.

Denison Visit

Gingrich made it clear to reporters at a recent breakfast that Armey doesn't speak for the Republican Party on agriculture.

In fact, Gingrich charges that President Clinton is "anti-agriculture" in seeking to cut domestic farm programs.

Armey showed up at Denison, Ia., a couple of weeks ago, stumping for Latham.

Armey told a Des Moines Register reporter, "I see the subsidies as a reduction of freedom for farmers. I grew up with farmers (in Cando, N.D.). They were people who said, 'I'll take the risk, because in farming I get to be my own person. I'll run my own farm my own way.'"

Then, in a comment sure to send family farm advocates' blood pressure over the red line, Armey added, "The market will determine the optimal number of farmers at the optimal size."

Al Capone

Armey opened his attacks on farm programs during debate on the 1990 Farm Bill.

Explaining his views to the Washington Post four years ago, Armey likened the House Agriculture Committee to "Al Capone dividing up Chicago — Bugsy gets prostitution, gambling and loan sharking on the South Side, somebody else gets numbers in the North, and so on. It's the same thing on the committee, only they do it with peanuts, feed grains, milk..."

And writing for the conservative Heritage Foundation, Armey stated that "even as perestroika comes to the Communist world, our own federal farm programs remain as American monuments to the folly of central planning."

Farm programs, wrote Armey, a former economics professor at North Texas State University, "are unrivaled for their sheer economic absurdity..."

Armey picked a prime spot to visit in Iowa. Grandy's northwest Iowa district gets by far the most benefit from federal programs. In 1991, the last full year for which data are available, the district got \$217 million in farm income support and conservation payments, one-third of the Iowa total.

Latham said of Armey, "We're not going to agree on everything," adding, "I think it's important to hear different points of view."

Latham added, "Obviously, I'm a friend of agriculture... everybody knows I'm totally supportive of the small farmer and making sure we have a good, sound safety net."

"I'm going to fight very hard to make sure we get a good deal in our 1995 Farm Bill."

Sounds as if Latham's angling to join that Al Capone-like mob.

 Iowa Press
Clipping
Bureau
Des Moines Register
Des Moines, IA 50309

SEP 1 1994

Farm Bureau nod meaningless

147

The recent endorsement by the Iowa Farm Bureau that recognizes Tom Latham, the Republican candidate for the 5th District congressional seat, as a "friend of agriculture" is at best meaningless and at worst a sham.

It is meaningless because Tom Latham, as one of the operators of Latham Seed Co., has a direct interest in agriculture.

This endorsement would have more meaning if he gave away seed to farmers in distressed circumstances, or if he were a strong proponent of smaller farms and a vocal critic of the vertical integration occurring in agriculture.

The Iowa Farm Bureau's unwilling-

ness to endorse Sheila McGuire, the Democratic candidate, does not mean that she is an enemy of agriculture or that she does not possess a program and ideas that will help farmers in the 5th District. McGuire, from my observation of her during the primary, has a breadth and depth on issues that Latham is markedly deficient in.

It seems that the Iowa Farm Bureau has never met a Republican it does not like, even if it means endorsing the Dan Quayle of Iowa politics.

— Paul Elliott Dahl,
Box 301, Gilmore City.

[The author was a candidate in the Fifth District Democratic primary.]

To The Editor:

147 The recent endorsement by the Iowa Farm Bureau that recognizes Tom Latham, the Republican candidate for the Fifth District Congressional seat, as a "Friend of Agriculture" is, at best, meaningless and, at worst, a sham. It is meaningless because Tom Latham, as one of the operators of Latham Seed Company, has a direct interest in agriculture because his economic livelihood depends upon selling seed to farmers.

Of course he is going to be a friend to farmers, because by doing so more

money is made for Latham Seeds and his own pockets. This endorsement would have more meaning if Tom Latham did not have a direct economic stake in agriculture or if he gave away seed to farmers in distressed circumstances, or if he was a strong proponent of smaller

he fought for a higher price for corn and soybeans at market time.

Alas, Tom has a capitalistic worldview and lacks a compassionate heart that sees the pain of others brutalized by the system with not enough wisdom.

The Iowa Farm Bureau's

ing for the seat, does not mean that Sheila is an enemy of agriculture or that she does not possess a program and ideas that will help farmers in the Fifth District.

Sheila, from my observa-

Latham is markedly deficient in. The Fifth District needs a person that not only represents them, but, more importantly, is able to provide a workable and compassionate response to the pressing problems that the United States is facing as a nation.

farmers in distressed circumstances, or if he were a strong proponent of smaller farms and a vocal critic of the vertical integration occurring in agriculture.

The Iowa Farm Bureau's unwilling-

Dan Quayle of Iowa politics.

— Paul Elliott Dahl,
Box 201, Gilmore City.

[The author was a candidate in the
Fifth District Democratic primary.]

To The Editor:

147 The recent endorsement by the Iowa Farm Bureau that recognizes Tom Latham, the Republican candidate for the Fifth District Congressional seat, as a "Friend of Agriculture" is, at best, meaningless and, at worst, a sham. It is meaningless because Tom Latham, as one of the operators of Latham Seed Company, has a direct interest in agriculture because his economic livelihood depends upon selling seed to farmers.

Of course he is going to be a friend to farmers, because by doing so more

money is made for Latham Seeds and his own pockets. This endorsement would have more meaning if Tom Latham did not have a direct economic stake in agriculture or if he gave away seed to farmers in distressed circumstances, or if he was a strong proponent of smaller farms and a vocal critic of the vertical integration occurring in agriculture, or if

he fought for a higher price for corn and soybeans at market time.

Alas, Tom has a capitalistic worldview and lacks a compassionate heart that sees the pain of others brutalized by the system with not enough wisdom.

The Iowa Farm Bureau's unwillingness to endorse Sheila McGuire, the Democratic candidate campaign-

ing for the seat, does not mean that Sheila is an enemy of agriculture or that she does not possess a program and ideas that will help farmers in the Fifth District.

Sheila, from my observation of her during the primary race, has a breadth and depth on issues that Tom

Latham is markedly deficient in. The Fifth District needs a person that not only represents them, but, more importantly, is able to provide a workable and compassionate response to the pressing problems that the United States is facing as a nation.

Sheila will not offer simplistic solutions that sound good politically like Tom Latham; she will get in the muddy waters and find the pearl of wisdom.

It seems that the Iowa Farm Bureau has never met a Republican that it does not like, even if it means endorsing Tom Latham -- the Dan Quayle of Iowa politics.

Paul Elliott Dahl
Gilmore City

'94 9:43

Gwen & Arlan Ecklund

FAX 7122638406

P.

From : PATTON OFFICE 712-732-2009

PE

Letters to the Pilot**If Latham is
farmer's friend,
who needs enemies?****TO THE EDITOR:**

For several days now, I have waited in the hope that Tom Latham, candidate for 5th District Congress seat, would repudiate the story in the *Des Moines Register* published August 24 on page 2A by writer Phoebe Howard. Statements in that article were made at a fundraiser for Mr. Latham by U.W. Representative Dick Arney (who, I am sure, appeared at Mr. Latham's request) that the federal government should not try to keep family farmers in business. He further stated at this fundraiser that farm subsidies should be phased out and that he would work 10 years to phase out farm programs. Rep. Arney is from Texas and is chair of the Republican Conference — perhaps Texas doesn't need family farmers, but Iowa does.

In all the years I have served in the Iowa Senate and House, I have never become involved in endorsing or criticizing candidates for Congress, but I feel so strongly we need to do everything we can to keep the family farmer and farm families that I cannot remain silent when we have a candidate who aligns himself with a representative who supports elimination of the Iowa family farmer.

Mr. Latham is part of a large business conglomerate himself, but I would also point out to him that his family has become wealthy selling their products to family farmers. The Iowa family farmer is

people representing us who understand the basic contribution that agriculture makes to the Iowa economy and who will put the welfare of all of Iowa above party or special interests.

Sincerely yours,
Berl B. Priebe
State Senator
Algona

**Religious
right gets scary****TO THE EDITOR:**

The tragic murder of the doctor and friend in Florida by a former fundamentalist minister is yet another reminder the truth needs to be told about the danger of fundamentalists, whose letters you have published. As a former Old Testament professor of mine expressed it, "One cannot understand fundamentalism until you recognize it is not a theological position, it is a psychological problem."

The psychological problems vary with the individual. Fear, doubt, anger, anxiety, unhealthy self-esteem, uncomfortableness with ambiguity and questioning and, most of all, the dangerous "need to be right." I am certain that anyone who is against more things than they are for, or who lives in fear more than hope, is not exactly emotionally healthy.

The emerging power of the religious right is very scary for anyone, deeply spiritual or not, for any group of folks who "know they

Post-it brand fax transmittal memo	1 of pages
From: Gwen Ecklund	To: Latham
Co: Latham for Congress	Phone: 732-1691
Dept:	

by Walter Phoenix Howard.
 Statements in that article were
 made at a fundraiser for Mr. Latham
 by U.W. Representative Dick
 Arney (who, I am sure, appeared at
 Mr. Latham's request) that the
 federal government should not try
 to keep family farmers in business.
 He further stated at this fundraiser
 that farm subsidies should be
 phased out and that he would work
 10 years to phase out farm
 programs. Rep. Arney is from
 Texas and is chair of the
 Republican Conference — perhaps
 Texas doesn't need family farmers,
 but Iowa does.

In all the years I have served in
 the Iowa Senate and House, I have
 never become involved in endorsing
 or criticizing candidates for
 Congress, but I feel so strongly we
 need to do everything we can to
 keep the family farmer and farm
 families that I cannot remain silent
 when we have a candidate who
 aligns himself with a representative
 who supports elimination of the
 Iowa family farmer.

Mr. Latham is part of a large
 business conglomerate himself, but
 I would also point out to him that
 his family has become wealthy
 selling their products to family
 farmers. The Iowa Farm Bureau and
 several other groups are listed by
 Mr. Latham as naming him a
 "friend of agriculture." If he and
 Mr. Arney are friends, then Iowa
 family farmers don't need enemies.
 I would suggest all these Iowa-
 based groups rethink their position
 and withdraw their endorsement.

This is in no way a political
 endorsement or lack thereof, but it
 is an alert to all people in the 5th
 Congressional District that we need

Religious right gets scary

TO THE EDITOR:

The tragic murder of the doctor
 and friend in Florida by a former
 fundamentalist minister is yet
 another reminder the truth needs to
 be told about the danger of
 fundamentalists, whose letters you
 have published. As a former Old
 Testament professor of mine
 expressed it, "One cannot
 understand fundamentalism until
 you recognize it is not a
 theological position, it is a
 psychological problem."

The psychological problems vary
 with the individual. Fear, doubt,
 anger, anxiety, unhealthy self-
 esteem, uncomfortableness with
 ambiguity and questioning and,
 most of all, the dangerous "need to
 be right." I am certain that anyone
 who is against more things than
 they are for, or who lives in fear
 more than hope, is not exactly
 emotionally healthy.

The emerging power of the
 religious right is very scary for
 anyone, deeply spiritual or not, for
 any group of folks who "know they
 are right" will be all too quick to
 prove that YOU are wrong.

I believe if one begins to
 examine some of the bizarre
 behavior and pronouncements of
 fundamentalists, one can begin to
 see some of the various
 psychological disorders they have.

Rev. Dave R. Holmes
 Council Bluffs

Post-it brand fax transmittal memo	1 of pages
From: Dave R. Holmes	To: Latham
Subject: Latham for Congress	Phone: 732-1661
Date: 1/1/91	Dept: 1

To: LFC

ping
au
legister
A 50309

Sep-07 Wed 12:40 1994

1994

Job 163

Page 3/9

LATHAM FOR CONGRESS

(712) 737-3456

DES MOINES RE

POTOMAC FEVER/Jane Norman

y gives the beginning of the eulogy for health-care

who'd been up 45½ aight trying to nego-crime bill only a few use Speaker Tom Fo-ably fresh at a break-fast with report-ers Tuesday. But it was his spin on the health-care debate that really made sleepy eyes pop open.

During the first minutes the discussion turned to health-care reform, as could id Foley was some-warrior for the bill Democratic leaders. expended upon Con-let Office estimates, erring to the belea-hat makes financial ongress.

e got two choices,"

Foley continued. "We can try and find legislation that can pass and make significant, if initial, steps"

Foley noted that health care is no longer at the top of the charts when voters are asked about their concerns.

toward providing coverage for the uninsured and controlling costs.

"If that can't be done, if we can't find that kind of a consensus, then ... we have to take it up again in the next Congress," he said.

Democrats won't accept "just anything," he said; they won't "just slap something together with health in the title." And unless some way is found to control costs, one of the most important aspects of reform will have failed, he said.

Significantly, a little while later,

when asked about hot issues in the fall election, Foley noted that health care is no longer at the top of the charts when voters are asked about their concerns. Some analysts are saying it peaked in 1993, and President Clinton lost the prime moment of opportunity by taking so long to propose a plan and get action started in Congress.

So take Foley's remarks — which made headlines because they confirmed reporters' and observers' feelings about the hopelessness of the situation — as the beginning of a health-care eulogy. Many fingers will be pointed at culprits in the weeks and months to come, but what matters now is how much voters care in November.

VULNERABLE? Say it again — it's quite a congressional election year in Iowa. The Aug. 20 issue of Congressional Quarterly lists every House seat in Iowa, with the excep-

tion of Republican Jim Leach's in the 1st District, as vulnerable to take-over by the other party.

That includes Democratic incumbent Neal Smith in the 4th; Republicans Jim Ross Lightfoot in the 3rd and Jim Nussle in the 2nd; and the race in the 5th for the open seat now held by Republican Fred Grandy.

CQ said it has identified 111 House seats, including 73 now held by Democrats, "that appear in danger of changing party hands in November." Most realistic projections in Washington of late have ranged from Democratic losses from the high teens to as many as 30 seats. Respected analyst Charlie Cook has said Democrats should "expect the worst" if the president's approval ratings dip below 40 percent; they're already there in some polls.

Democrats in Iowa argue that the state is always resistant to national trends, and independent Iowans may decide to issue in a banner year for

the party's slate.

★ Meanwhile, Republican candidate Tom Latham in the 5th says he l-poll that shows him ahead of Democrat Sheila McGuire, 56 percent percent. But ag types here are wondering why Latham w-choose to call upon Congress Dick Armey, the foremost oppo-of farm subsidies in the House come stump northwest Iowa for Kind of like inviting Ted Bund testify against the crime bill.

GOP ANGER: Foley also observed that there has been "enormous anger" directed at moderate Republicans who decided to vote for crime bill in the House, an assertion certainly borne out in the pages of the conservative Washington Times. "Bill Clinton delivers turkey at turkey to Congress and certain publicans leap to be the stuffing," wrote editor Wesley Pruden, with his typical delicate understatement.

DES MOINES REG. 8-28-94

POTOMAC FEVER/Jane Norman

g of the eulogy for health-care reform

about hot issues in the
Foley noted that health
longer at the top of the
n voters are asked about
erns. Some analysts are
aked in 1993, and Presi-
n lost the prime moment
ity by taking so long to
lan and get action started.

Foley's remarks — which
lines because they con-
orters' and observers'
out the hopelessness of
n — as the beginning of a
eulogy. Many fingers
nted at culprits in the
months to come, but what
w is how much voters
ember.

ABLE? Say it again —
congressional election
a. The Aug. 20 issue of
al Quarterly lists every
in Iowa, with the excep-

tion of Republican Jim Leach's in the
1st District, as vulnerable to take-
over by the other party.

That includes Democratic incum-
bent Neal Smith in the 4th; Republi-
cans Jim Ross Lightfoot in the 3rd
and Jim Nussle in the 2nd; and the
race in the 5th for the open seat now
held by Republican Fred Grandy.

CQ said it has identified 111 House
seats, including 73 now held by Dem-
ocrats, "that appear in danger of
changing party hands in November."
Most realistic projections in Wash-
ington of late have ranged from
Democratic losses from the high
teens to as many as 30 seats. Re-
spected analyst Charlie Cook has
said Democrats should "expect the
worst" if the president's approval
ratings dip below 40 percent; they're
already there in some polls.

Democrats in Iowa argue that the
state is always resistant to national
trends, and independent Iowans may
decide to issue in a banner year for

the party's slate.

Meanwhile, Republican candidate
Tom Latham in the 5th says he has a
poll that shows him ahead of Demo-
crat Sheila McGuire, 56 percent to 30
percent. But ag types here are still
wondering why Latham would
choose to call upon Congressman
Dick Armey, the foremost opponent
of farm subsidies in the House, to
come stump northwest Iowa for him.
Kind of like inviting Ted Bundy to
testify against the crime bill.

GOP ANGER: Foley also observed
that there has been "enormous
anger" directed at moderate Repub-
licans who decided to vote for the
crime bill in the House, an assertion
certainly borne out in the pages of
the conservative Washington Times.
"Bill Clinton delivers turkey after
turkey to Congress and certain Re-
publicans leap to be the stuffing,"
wrote editor Wesley Pruden, with
his typical delicate understatement.

Grandy and Leach were among
those who voted for the bill (al-
though Leach was initially a "no" on
the vote on the rule). With this,
Leach defused Democrats who say
he's become a right-wing puppet of
Newt Gingrich. As for Grandy, he
can do any darn thing he pleases
these days, and does. Watch for
some really interesting votes from
him as the end of his tenure in Con-
gress draws near.

HEY, HE SAID IT: "I'm just a
talking fool," declared Delaware
Senator Joe Biden at one point in the
endless debate in the Senate over the
crime bill. Biden, chairman of the Ju-
diciary Committee, ate up hour upon
hour on C-SPAN railing over GOP
opposition to the bill. It was an ex-
traordinary talkathon even for Bi-
den.

JANE NORMAN is a reporter in The Reg-
ister's Washington, D.C., bureau.

 Iowa Press
Clipping
Bureau
Denison Review
Denison, IA 51442

AUG 27 1994

147 Congressman campaigns for Latham while in Denison

Congressman Dick Armey of Texas was in Denison on Tuesday to campaign for Tom Latham, the Republican candidate for Congress in the Fifth District.

Calling Latham "a dream candidate" for Republicans, Armey said, "We need him in Washington. We need a Republican majority."

Armey, as chairman of the House Republican Conference, is the third ranking member of the House Republican leadership. He predicts the election will result in a net gain of 40 seats in the House, which would mean a Republican majority for the first time in 40 years.

"The Clinton administration is creating the environment for a Republican victory," Armey said. Plus, he said, "We have the best looking candidates I've ever seen in the last 10 years and Tom is a perfect example."

Armey said the race between Latham and the Democratic candidate, Dr. Sheila McGuire, is an example of the ideological difference between the two parties.

"There is a difference between me and the guy on the other side of the aisle," Armey said. "Our two great political parties are different. There are good people in both parties, but in the philosophical essence of the two parties there is a difference."

The Democratic Party favors "big government and power to Washington," he said, while the

Republican Party advocates "freedom for the American people."

"Government has showed they can't handle their business. How can they think they can handle mine?" he said.

Armey was critical of McGuire for being a part of the task force on health care reform organized by the Clinton administration.

The five-term Congressman said the House of Representatives would be operated differently with a GOP majority. "We will change the way the House does business. It will be done in the open. There will be no secret meetings. The books will be open," he said.

Armey said the Republicans' legislative agenda will include term limits, a balanced budget amendment, "real welfare reform" and "a crime bill that deals with criminals."

"I don't think there will be" a health reform bill passed this year, Armey said.

He predicted that if the Republicans take control in the House many re-elected Democrats will change parties and several longtime Democratic committee chairmen will resign.

Armey, whose home is in suburban Dallas, is a native of North Dakota. He earned a PhD in economics from the University of North Dakota and was chairman of the economics department at the University of North Texas prior to his election to Congress.

DES MOINES REG.
8-24-94**CRITIC OF SUBSIDIES****Armey sees
end to U.S.
ag supports**

'The Farm Bill will have to be drastically altered . . . and I think a lot of Iowa farmers know that,' the U.S. representative says.

By PHOEBE WALL HOWARD

REGISTER STAFF WRITER

Denison, Ia. — U.S. Representative Dick Armey of Texas, a critic of farm programs, said Tuesday



Armey
Subsidy foe

that the federal government should not try to keep family farmers in business because "the market will determine the optimal number of farmers at the optimal size."

Farm support is in big trouble

and farmers know it, which is why so many have called and written to voice support for phasing out farm subsidies, Armey said in an interview with The Des Moines Register.

"When I became actively engaged in the Farm Bill of 1990, I figured I got at least a 10-year flight here. We'd take out some of the little programs, like peanuts, honey, wool and mohair. And then compress the mainstay programs. Shrink them, so farmers get a chance to adjust and develop

Armey, chairman of the Republican Conference, had just finished speaking to a group of supporters at a fund-raiser for fifth congressional district candidate Tom Latham, an agribusinessman.

He said price support rates for farmers should be lowered, which would free more acreage. "I will and have tried to reduce the loan rate. It has always been my plan to gradually remove restrictions on how the farmers farm their land."

In Iowa, the largest impact would be felt by changes in the feed grain subsidy program, which in some years provides more than \$1 billion to Iowa farmers.

"I have, in fact, advanced the proposition that if you have an adjusted gross income — that's an after-expense income — of \$100,000, you didn't qualify for farm programs. If you have the asset base to generate that income, and are receiving that income, how in the world can you justify taxing other Americans to subsidize that income?"

Technology tends to benefit larger farming enterprises in areas like wheat and corn, he said, adding that farmers must be encouraged to diversify their crops and gear to market conditions. But if farmers have gotten loans by agreeing to participate in a certain crop program, they're trapped.

"The Farm Bill is always going to be in trouble," he said. "I grew up in a rural lifestyle. But more and more of Congress is dominated by people who know nothing about this. The Farm Bill will have to be drastically altered in the next 10 to 15 years, and I think a lot of Iowa farmers know that."



Iowa Press
Clipping
Bureau

The Times Herald

Carroll, IA 51401-0546

AUG 22 1994

147
Texas congressman to campaign for Latham

U.S. Rep. Dick Arney of Texas will campaign for 5th District Republican congressional candidate Tom Latham at a luncheon at noon Tuesday at Cronk's Restaurant in Denison.

Arney serves as chairman of the House Republican Conference, which is the No. 3 post in the House Republican leadership. Arney has been an advocate of free-market and pro-growth economic policies and has attacked wasteful federal

spending.

Latham, an Alexander business owner, is running against Democrat Sheila McGuire of Boone for the 5th District seat.

Anyone interested in attending the luncheon may obtain information and make reservations by contacting Gwen Ecklund, local field representative for Latham for Congress Campaign, in Denison, 712-263-8486.



Iowa Press
Clipping
Bureau

Buffalo Center Tribune

Buffalo Center, IA 50424

AUG 25 1994

147

Buffalo Center



IOWA CONGRESSIONAL CANDIDATE Sheila McGuire (right) met recently in Washington with South Dakota Congressman Tim Johnson (left) and Minnesota Congressman Tim Penny to discuss deficit reduction and agriculture. "We need strong leaders like Sheila McGuire in Congress," said Johnson, "to be sure the voice of America's heartland is heard forcefully on every important issue."

 **Iowa Press
Clipping
Bureau**
The Advance
Holstein IA 51025

AUG 24 1994

MCGUIRE PUSHES AGRICULTURE POLICIES ON CAPITOL HILL

South Dakota Congressman Tim Johnson and Minnesota Congressman Tim Penny met recently on Capitol Hill with Dr. Sheila McGuire, Democratic nominee for Congress in Iowa's 5th district, to discuss current agricultural policies and ways to reduce the federal deficit. McGuire was in Washington to confer with several members of the agriculture community.

"I was excited to have the opportunity to discuss these issues with Congressmen Johnson and Penny," McGuire said. "We have finally turned the corner in focusing the nation's attention to deficit reduction."

"However, when it comes to reviewing our current farm policies, we need to be careful that agriculture is not taking a disproportionate hit. Both Tim Penny and Tim Johnson have a history of watching out for our family farmers as they keep a steady eye on the deficit."

Johnson has established a reputation as a leader in agricultural policies, while Penny has received national attention for his work in reducing the deficit. Both are agriculture subcommittee chairmen in the House of Representatives.

"With Sheila McGuire's background on her family's farm," said Johnson, "she will be a key asset to us on the House Agriculture Committee as we begin work on the 1995 Farm Bill — the most important piece of legislation facing midwestern farmers today. I want to make sure we continue cutting the deficit, but we can't sell our farmers short."

McGuire is a fourth-generation northwest Iowan. She was born in Sioux City and raised...

Washington to confer with several members of the agriculture community.

"I was excited to have the opportunity to discuss these issues with Congressmen Johnson and Penny," McGuire said. "We have finally turned the corner in focusing the nation's attention to deficit reduction."

"However, when it comes to reviewing our current farm policies, we need to be careful that agriculture is not taking a disproportionate hit. Both Tim Penny and Tim Johnson have a history of watching out for our family farmers as they keep a steady eye on the deficit."

Johnson has established a reputation as a leader in agricultural policies, while Penny has received national attention for his work in reducing the deficit. Both are agriculture subcommittee chairmen in the House of Representatives.

"With Sheila McGuire's background on her family's farm," said Johnson, "she will be a key asset to us on the House Agriculture Committee as we begin work on the 1995 Farm Bill — the most important piece of legislation facing midwestern farmers today. I want to make sure we continue cutting the deficit, but we can't sell our farmers short."

McGuire is a fourth-generation northwest Iowan. She was born in Sioux City and raised on her family's farm near Holstein. She attended Creighton University and went on to earn two doctorates in health care, one from the University of Iowa and the other from Harvard University. She is founder and owner of the Iowa Health Research Institute in Boone.