

May 20, 1994

MEMORANDUM TO SENATOR DOLE

FROM: SUZANNE HELLMANN

RE: MAINE POLITICAL BRIEFING

---

Primary: 6/14

U.S. SENATE RACE

Roll Call and Cook rate this a "toss-up."

A confidential poll done right after Mitchell's announcement showed Snowe in the lead by 8 points. This information was not released.

- o Closure of Loring AFB is an important issue for the Snowe campaign as Rep. Andrews supported the closure and Snowe opposed it. Two other military facilities - the Portsmouth Shipyard and Brunswick Naval Station - could also face some cut-backs or closure in the future. Interestingly, the Pentagon announced on 5/3 that it will locate a 750-job defense accounting center at Loring, one of 25 sites chosen nationwide to consolidate the work of 300 existing defense accounting centers. Loring officially closes in late summer, but many of the 4,600 employees have already left. (Andrews does not support the bill to delay further base closures).
- o Gun control is a big issue. Andrews supports gun control and Snowe opposes it. Their recent vote reflects that -- this is viewed as a negative for Andrews as the Maine population is made up of avid game hunters.
- o The Health Security Act could cause the loss of 3,852 - 4,800 jobs in Maine and a possible 106,179 could face reduced wages, hours or benefits.
- o Courting the Perot voters will be important as he received 30% of the vote as did Bush. (Clinton received 39%).
- o According to the latest FEC reports, Rep. Andrews raised \$216,000 leaving him with \$217,000 cash-on-hand. Rep. Snowe raised \$66,000 and reported \$147,000 cash-on-hand.

## GUBERNATORIAL RACE

(See enclosed briefing from Republican Governor's Association).

## U.S. HOUSE RACES

ME 01 -- (Andrews is running for Senate). Roll Call rates this one a toss-up. Name recognition and fund-raising ability will be crucial for this Republican primary. The three leading candidates are:

- o Kevin Keogh, ex-ME GOP chair
- o James Longley, Jr., son of ex-Gov. Longley
- o Charles Summers, State Sen.
  
- o ex-Portland Councilor, Ted Rand is more of a longshot

Longley led the GOP field in fund-raising, \$10,100. Keogh followed with \$9,800. The leading Dem. candidate, State Sen. President Dennis Dutremble led the Dems with \$12,750 raised.

ME 02 -- (Snowe is running for Senate). Roll Call also rates this one a "toss-up." The highest Perot vote in the country, 33%, was in the second district of Maine. There are four Republicans vying for this seat:

- o Stephen Zirnkilton, State Rep.
- o Richard Bennett, State Rep.
- o Glenn MacNaughton, businessman
- o Hollis Greenlaw, tax attorney

Zirnkilton and Bennett have the best name recognition and have the political experience that the other two candidates lack. This puts Zirnkilton and Bennett as the leading two candidates. They have raised \$15,100 and \$22,700 respectively.

Sen. George Mitchell's nephew, ME Dem. Chair James Mitchell, raised the most money according to the latest FED reports - \$60,500. There are six other Democrats in the race.

05/19/94

16:39

NRSC 2ND FLOOR → 202 408 5117

NO. 215

002

## MEMORANDUM

TO: Senator Dole

FR: Jim Dornan, NRSC

DA: May 19, 1994

RE: Your upcoming trip to Maine

### POLITICAL UPDATE:

The retirement announcement of Senator George Mitchell has moved Maine from a "snoozer" to a "scorcher." Both of Maine's current House Members have announced that they are running, setting the stage for a fierce and very competitive campaign.

Rep. Olympia Snowe announced her candidacy last month. She is putting together her campaign team and is already actively campaigning around the state. Her campaign manager will be Sharon Miller, currently Chief of Staff to Governor John McKernan, Congresswoman Snowe's husband and the former congressman from the First Congressional District. The First CD is the more metropolitan district of Maine's two CD's and includes both Portland, the largest city in the state and Augusta, the capital. Congressman Tom Andrews has represented the First CD since 1990. Cong. Snowe represents the Second District, which is more rural and where the voters tend to be more conservative.

The Bangor Daily News reported that Mitchell strongly urged Andrews to run and will be actively involved in this race to ensure his seat does not go to the GOP. Andrews is one of the most liberal Members of the House. Roll Call rated him in the top five and The National Journal rated him the most liberal. He carries some serious baggage, too. Last year, he vigorously supported the Base Closure Commission's recommendations to close Loring Air Force Base in northern Maine whose shutdown cost the state 5,000 jobs. The outcry in the state was great, but apparently he didn't learn his lesson. This year's recommendations could affect Brunswick Naval Air Station, Kittery Air Force Base, and Portsmouth Naval Shipyard, all major employers in the state, yet Andrews is very vocal in his support for these recommendations, too.

The bottom line in the race will be who can turn out their voters in the other's congressional district. The early line is that Cong. Snowe will be able to do it better than Cong. Andrews.



## POLITICAL SITUATION IN THE STATE

With Mitchell's retirement leading to Snowe's and Andrews' running, the state now has two open seat that have attracted over 20 House candidates in both parties. And with Governor McKernan having to step down after two terms, the governor's race has attracted another dozen or so candidates, including independents. Needless to say, the focus in the media has been all over the board and in-state fundraising has been difficult for everyone.

## FINANCIAL INFORMATION:

Candidate	Raised 3/31	Spent 3/31	PAC \$	COH 3/31	Debt
Snowe	\$46,355	\$37,453	\$8,500	\$83,863	\$5,264
Andrews	\$215,979	\$241	\$33,500	\$215,737	\$0

*Primary Date*

*June 14*

*Coord. Limit*

*\$117,200*



# NEW ENGLAND

THE BOSTON SUNDAY GLOBE • MAY 8, 1994

## MAINE

### To win, Senate hopefuls must be versatile



OLYMPIA SNOWE  
'I have to fly in my district.'

By Royal Ford  
GLOBE STAFF

PORTLAND, Maine — For Tom Andrews, winning the US Senate seat being vacated by George Mitchell will mean winning votes in the vastness of Maine's 2d Congressional District, geographically the largest east of the Mississippi River and a territory that eight times has sent Olympia Snowe to Congress.

For Snowe, the votes needed to win Mitchell's seat lurk somewhere in the neighborhoods of Portland or Augusta or along the heavily developed coast of the 1st District, which in 1992 gave Andrews more votes for the US House than any candidate in the country.

In a race sure to be watched

carefully from Washington, Snowe, a moderate Republican known for bucking the party line, and Andrews, a liberal Democrat, are giving up their seats in the House of Representatives to have at each other in a contentious race to succeed Mitchell. Neither faces an opponent in the June primaries.

Of particular interest, political observers and operatives said last week, will be how each dances on the other's political floor.

Many will be looking at how Andrews, a dogged campaigner and deft organizer used to the tight confines of his district, will cope with the geographic enormity of Snowe's district, where airplanes are a campaign necessity and where even hours of travel will often leave him in

towns with few people. Also watched will be how Snowe, used to personal campaigns across this great space and the warmth that supporters in each outpost have given her over the years, will operate in Andrews' media-intensive district, where a single television appearance can reach all voters and where neighborhood-to-neighborhood political infighting is common.

Andrews' district stretches about halfway up the coast, from Kittery into Waldo County, in an irregular slant seldom wider than 50 miles. All the rest of Maine — about three-quarters of the state — is Snowe's district. Each has just under a half-million voters.

The race will be decided, Snowe said last week, by who can make

greater inroads in the other's district. That will be me."

Andrews, on the other hand, said that what has worked for him in the past will work again. "You dance with the one that brought you," he said, "and for me that's grass-roots organizing and concentration on bread-and-butter issues."

Oliver Woshinsky, a professor of political science at the University of Southern Maine, said he sees some advantages for Snowe. "She's had a lot of experience going to all those little towns and getting votes and he hasn't," Woshinsky said.

"This will be a whole new world for Tom Andrews," said Kevin Raye, Snowe's finance director.

Yet, Woshinsky also sees what he



TOM ANDREWS  
'Not looking at . . . a political line'

1 DUARE ISLAND



## Versatility needed in Maine contest

### ■ MAINE

Continued from Page 35

said could be a decisive advantage for Andrews — he may not have to win as many voters in Snowe's district as she will have to in his.

In 1992, Andrews won 232,696 votes in a 1st District race against heavily financed Linda Bean. Snowe, meanwhile, had a tough battle in pulling in 153,022 votes to beat Patrick McGowan's 139,824 in her district. Woshinsky, looking at the broader race for US Senate, pointed out that no one who won 280,000 or more votes has lost a statewide race in Maine.

"If Andrews can't do better than McGowan, it would be amazing," Woshinsky said.

But Ted O'Meara, a former state Republican chairman who also served as an aide to Snowe and Sen. William Cohen, says Snowe will have a far easier time winning converts in Andrews' district than he will in hers — because of his liberal politics and because a compact television market makes the voters of his district more accessible.

"The 2d District is more conservative; it doesn't have Portland," O'Meara said. "He's going to have a much harder sell in the 2d District than she is in the 1st.

"Olympia's got the easier job," he added. "She can use TV to her advantage," while Andrews "is going to have to travel much greater distances to see far fewer people at each stop."

Snowe has noticed this difference. "I can't get over how many places I can get to in one day," she said of recent campaigning in Andrews' district. "I have to fly in my district."

Andrews and his staff, however, do not appear daunted. "We'll have every town organized, in some cases neighborhoods, and in the bigger towns we'll go block by block," said Joe Cowie, a top aide on a staff not-

ed for its abilities to organize. "It's not rocket science. If it can be done in Portland, it can be done in Biddeford and in Presque Isle.

"If Olympia thinks she can out-campaign Tom because she knows the plane schedules, then good for her," Cowie added. "Just watch us."

"We're not looking at this in terms of a political line drawn down the middle of the state, but in terms of issues that affect people," Andrews said.

One issue that all agree will play heavily in this campaign is the closing of military bases. Andrews supported efforts to save defense money by closing bases, while Snowe opposed them. Maine lost Loring Air Force Base, and Andrews' critics say this will hurt him in a statewide race.

"Tom Andrews did not stand with the rest of the Maine delegation," Raye charged.

"A clever campaign by his opponent could force him on the defensive" on this issue, Woshinsky said. "They could try to show a lack of concern for the working people of Maine.

"He's got to turn that into a plus, show he's a man of principle, someone with a different perception of what the future should be," Woshinsky added.

Which is exactly what Andrews does when asked about the issue. "I don't apologize for positions I've made in the past," he said, charging that while standing up for a local base "can win you short-term political points, that doesn't get the job done."

Snowe, meanwhile, said her opposition to base closures was not simply a local decision. She said she was "disturbed by the level of defense cuts that are driving these base closures" because the country is "dismantling our infrastructure at a very rapid rate, and it's going to be irretrievable."

## m emerges as heroine

MAY-17-94 17:06 FROM: RGA

ID: 2028638659

PAGE 2/6

# MAINE

Status of Incumbent: Gov. McKernan (R) Ineligible to seek reelection: Open Seat.

Primary Election: June 14

## REPUBLICANS

Jasper Wyman, Christian Civic League  
Susan Collins, Business Commissioner  
Sumner Lipman, State Representative  
Pam Cahill, State Senate Minority Leader  
Paul Young, Representative  
Judith Foss, State Representative  
Charles Webster, State Senator  
Mary Adams, Tax Activist

## DEMOCRATS

Joe Brennan, Fmr. Governor  
Donnell Carroll, State Representative  
Thomas Allen, Fmr. Portland Mayor  
Robert Woodbury, Ex. University Chancellor  
Richard Barringer, Fmr. State Planning Dir.

## INDEPENDENT

Angus King, fmr. Broadcaster  
Patick Quinn  
Ernest Gallant

## GREEN PARTY

Jonathan Carter, Professor

## Early Summary

Thirteen Republicans and Democrats are running for Governor. Analysts have said that with such a large field, money will be a key determinant. Jobs and the economy have been the dominant issues thus far in the developing campaign.

Former Democrat Governor Joseph Brennan of Portland is the front-runner in the Democrat primary. He raised \$207,715 in 1993. William Coogan, Associate Professor of Political Science at the University of Southern Maine says Brennan has a good organization in addition to his financial resources and high profile. He has been criticized for raising 90% of his money from out-of-state sources in 1993 to relieve his 1990 debt. In a Maine Public Television and Maine Public Radio survey, Brennan was favored by 32% of those polled. This was good for first place in the poll. The poll's margin of error was plus or minus 3.5%.

Thomas H. Allen of Portland and Robert L. Woodbury of Bangor are the candidates behind Brennan who may have the resources to overcome his advantages. Allen had contributions of \$146,507, and Woodbury raised \$130,672 in 1993. They are both seen as the most likely challengers to Brennan, though Woodbury's campaign was slow to take off. Allen received 5.6% and Woodbury 4.4% in the Public Television Poll and were in second and third place respectively. Allen chaired the Clinton/Gore campaign in Maine. Richard Barringer of Hallowell, raised \$38,088. He is decidedly liberal, and is



supporting a Canadian-style health plan. Barringer received 3.3% and placed fourth in the poll. Donnell Carroll raised \$4,459. Some have said that Carroll's poor performance is somewhat surprising given the length of time he has been in the campaign. Brennan supporter, Senator Donald Esty, says much of the campaign is "grass rootsy."

Among Republicans, it is noteworthy that so many women are in contention for the nomination. However, the leading fundraiser has been Sumner Lipman with \$60,267 for 1993. Lipman loaned \$50,000 of this to his campaign. Observers believe that he has not won over the party faithful. He is, however, on both television and radio. In the Maine Public Television, Maine Public Radio survey, when presented with the Republican candidates running, (N=640, margin of error +/- 3.5%) Lipman received 9.4% of those polled. This placed Lipman first among GOP candidates.

Susan Collins, from a long-line of public servants, has raised \$37,506. She placed third in the poll with 7.6%. Charles Webster has raised \$36,665 but placed fifth in the survey. Jasper Wyman has raised \$31,644. Wyman took second place in the survey with 8.2%. Paul Young has mildly surprised people with his \$21,488 raised, which is seen as respectable for a freshman legislator. Pamela Cahill has raised only \$7,764 and placed fourth in the poll with 5.3%. Though Judith Foss did not do well in the survey, she is seen as someone who could fare well in the primary. She is moderate, pro-choice and opposes gay rights. As a legislator, she lead the fight for Republicans on the Budget Committee to cut spending. Robert Monks decided to support Foss after he opted out of the race himself. She is an experienced fundraiser, having headed that effort for Governor McKernan in 1990 and the state party in 1992.

Broadcaster and Independent candidate Angus King will play a pivotal role in the campaign, as could Green candidate Jonathan Carter.

In a Maine Public Television and Maine Public Radio Poll, when presented with a list of those candidates currently in the race for governor without regard to party affiliation, Brennan received 18%, Angus King received 6.1%, Allen 2.7% and no one else received more than 2%. The margin of error was plus or minus 3.5% and 640 people were surveyed.

#### 1992 Presidential Vote

Clinton (D)	263,420 (39%)
Perot (I)	206,820 (30%)
Bush (R)	206,504 (30%)
Total	676,744

#### 1990 Gubernatorial General Election Results

John R. McKernan, Jr. (R)	243,766 (47%)
Joseph Brennan (D)	230,038 (44%)
Andrew Adam (I)	48,377 (9%)
Total	522,181

### POLLING INFORMATION

MAINE PUBLIC TELEVISION AND MAINE PUBLIC RADIO, (N=640,  
REPUBLICAN TRIAL HEAT)

LIPMAN	9.4%
WYMAN	8.2%
COLLINS	7.6%
CAHILL	5.3%
WEBSTER	2.3%
YOUNG	1.2%
FOSS	0.6%

MAINE PUBLIC RADIO AND MAINE PUBLIC TELEVISION, (N=640,  
DEMOCRAT TRIAL HEAT)

BRENNAN	32%
ALLEN	5.6%
WOODBURY	4.4%
BARRINGER	3.3%
HOWANIEC	2.2%
CARROLL	0.5%

# Olympia Snowe

P O Box 1994 Auburn Maine 04211-1994  
(207) 777-1194

FOR IMMEDIATE RELEASE  
April 30, 1994

CONTACT: KEVIN RAYE  
207/990-1994

## SNOWE LAYS OUT AGENDA, QUALIFICATIONS FOR U.S. SENATE

Underscoring the stark contrast between Maine Senate candidates in 1994, moderate GOP Congresswoman Olympia J. Snowe pledged a clear choice for Maine voters in November. Speaking at the Maine Republican Convention in Augusta Saturday morning, "This will be a positive campaign, built around a united effort, a common future and a rich fabric that makes us proud to call ourselves Mainers, and proud to be Americans," Snowe said

Snowe painted her vision of a "rising America", and said her agenda as a Senator for Maine would include:

- Fiscal restraint in government, including support for a balanced budget amendment;
- Personal choice in health care coverage that can not be dropped or denied;
- An American defense system sized to face an unstable world;
- Job creation in Maine through defense conversion, economic modernization and exports to world markets;
- Revolutionized education, job training and school-to-work systems to prepare citizens for the future; and
- Continued leadership in providing equality and opportunity to the women of Maine and America.

"The next six years will determine both the quality of life and the standard of living we as Americans can expect for the first part of the next century," Snowe said. "We must do all we can in the remaining part of this decade to prepare our children, our students and our workforce for the challenges that await us."

Snowe emphasized her commitment to fiscal restraint in government, including a balanced budget amendment to the U.S. Constitution. "I have fought against wasteful government spending and pork barrel projects, and I have fought against the boat tax, the gas tax, the estate tax, ... and against higher taxes on workers and small businesses," Snowe said.

- more -

*Paid for by Citizens for Olympia J. Snowe Committee.  
Contributions are not deductible as charitable contributions for Federal income tax purposes.  
Printed on recycled paper with soybean ink.*



-2-

Snowe said that as a U.S. Senator, she would "fight for a balanced budget amendment and for responsible budgets that encourage small business growth and expansion, and mean jobs for people all over Maine." She said she would continue to fight for responsible tools to restrain government spending, including a Presidential line item veto, and prohibition of unfunded federal mandates on small communities.

On health care reform, Snowe advocated a bipartisan overhaul of the private health care system to make it "affordable and accessible, and to guarantee no one could ever be denied or dropped from health insurance coverage."

"Government exists to solve the kinds of problems that people cannot solve or are unable to solve themselves, and I believe not only in the responsibility of individuals to their nation, but in the power of the individual over the power of government," she said.

Snowe said that events in North Korea, the Middle East and Bosnia showed the need for a strong defense. "In a dangerous and unpredictable world made even more so because of a weak foreign policy, America needs a national defense, and it must be second to none," she said. "We owe that much to those who fought before us to protect and preserve the freedoms we enjoy today ... and to those who will follow us in the next century."

Snowe said she believes America's changing defense posture creates opportunities for Maine. "As your Senator, I will continue to craft and work for programs that will guide our state through the defense conversion process," she said.

"My plan will create a defense conversion czar to make conversion a priority, and help guide communities hard-hit by recent base closures into a future that is economically secure and stable," Snowe said. And she said she would work to open export markets for former defense contractors, "just as I urged the President to certify loan guarantees that will help BIW become more competitive in shipbuilding for foreign markets."

So that Maine people share in the opportunities of a global market, Snowe said she would work to revolutionize American education, job training and school-to-work systems.

"We must prepare our students and our workers for the competitive, global and interdependent world of tomorrow. Our future will be shaped and framed by our ability to educate and train our workforce to adapt to new technologies," Snowe said. "We must give them the skills they need to secure and keep good-paying, long-lasting, high-skill jobs."

Building on her vision for the people of Maine and America, Snowe said that as Senator, she would also continue her "fight for equality of opportunity for the women of Maine and America in the classroom...in the workplace...and in health care". She also said tough crime control legislation would help preserve America's quality of life. "There is no reason why the greatest nation on earth should also be the most violent," she said.

- 30 -



U.S. Senate  
Republican Policy  
Committee

Don Nickles, Chairman  
Kelly D. Johnston, Staff Director



U.S. House  
Republican  
Conference

Dick Armey, Chairman  
Kerry Knott, Executive Director

## The Health Security Act's Impact On MAINE

**JOB LOSS:** A study by two Ohio University economists for the American Legislative Exchange Council (ALEC) projects Maine would lose 4,800 jobs. CONSAD Research Corporation, an econometric forecasting firm, estimates that 3,852 Maine workers would lose their jobs, and another 106,179 would face reduced wages, hours or benefits.

**WAGES AND BENEFITS LOST:** According to the ALEC study, Maine workers would suffer a loss of wages and benefits of \$440 million, while CONSAD estimates a drop of more than \$126 million in wages alone. The CONSAD study observes, "when business owners are faced with increased labor costs due to health care reform, they will attempt to pass the increase on to employees in the form of lower wages and fewer benefits."

**PERSONAL INCOME LOSS:** Maine residents would lose \$530 million in personal income, concludes the ALEC study, or a loss of \$1,640 to the average family of four.

**MEDICARE IMPACT:** Maine hospitals would feel the strain of the \$118 billion in Medicare cuts contained in the President's proposal. An analysis by Lewin-VHI for the American Hospital Association estimates that by the year 2000 the Clinton plan would result in Medicare reimbursing Maine hospitals only 56 cents for every dollar in services rendered.

The study notes: "Some communities may see their hospitals close for the wrong reasons--not because they are no longer needed, but because they are financially weak...These hospitals may be the very ones that need to remain open to assure access and coverage to underserved populations and achieve the broader goals of health care reform."

**STATE/LOCAL REVENUE IMPACT:** According to the ALEC study, "It is argued that the Administration's health care plan is a windfall to states. There are two factors which proponents of this point of view neglect which essentially negate the validity of this argument. First, state and local governments will be paying health care taxes ('premiums') on their own employees under the Administration's plan...Second, and far more substantial, the decline in personal income discussed above means a substantial loss in state tax revenues."

Consequently, the ALEC study concludes that Maine would lose \$84 million annually in much needed revenue.

MAY-18-94 WED 17:40

SNOWE FOR SENATE

FAX NO. 7775164

P. 01

# Olympia Snowe

Post-It Fax Note	7671	Date	5/18	# of pages	3
To	Congresswoman Olympia Snowe		From	Kim Russell	
Co./Dept.			Co.		
Phone #			Phone #	207/777-1194	
Fax #			Fax #		

FOR IMMEDIATE RELEASE  
May 18, 1994

CONTACT: DAVE LACKEY  
(207) 777-1194

## DOLE WILL VISIT MAINE TO BOOST SNOWE CAMPAIGN

U.S. Senator Bob Dole, the Senate Republican Leader, will visit Maine Saturday in support of Congresswoman Olympia Snowe's bid for the Senate, her campaign announced today.

"Senator Dole is widely respected by Maine people, and I am delighted that he is coming to Maine to join with Senator Bill Cohen in support of my campaign," Snowe said. "Maine people want to elect a responsible leader to the Senate who will fight for good jobs in Maine, and hold the line on spending in Washington," she said.

Senator Dole, Senator Cohen and Congresswoman Snowe will be available to the media on Saturday afternoon:

### *News Availability*

Airport Manager's Conference Room  
Second Floor, Portland International Jetport  
Saturday, May 21, 1994  
5:30 - 6:00 p.m.

Following the news availability, Senators Cohen and Dole will join Congresswoman Snowe in a reception and dinner in South Portland to benefit the Snowe for Senate campaign.

- 30 -

*Paid for by Citizens for Olympia J. Snowe Committee.  
Contributions are not deductible as charitable contributions for Federal income tax purposes.  
Printed on recycled paper with soybean ink.*



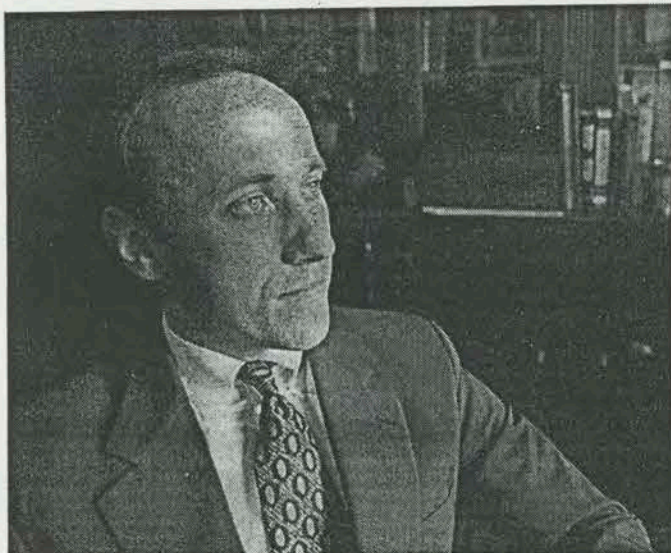


Photo by Maureen Keating

The Maine Senate showdown is likely to be one of the liveliest in the country. With neither candidate facing a primary, the GOP says Rep. Tom Andrews (D) will suffer from support for gun control and the closing of Loring Air Force Base.

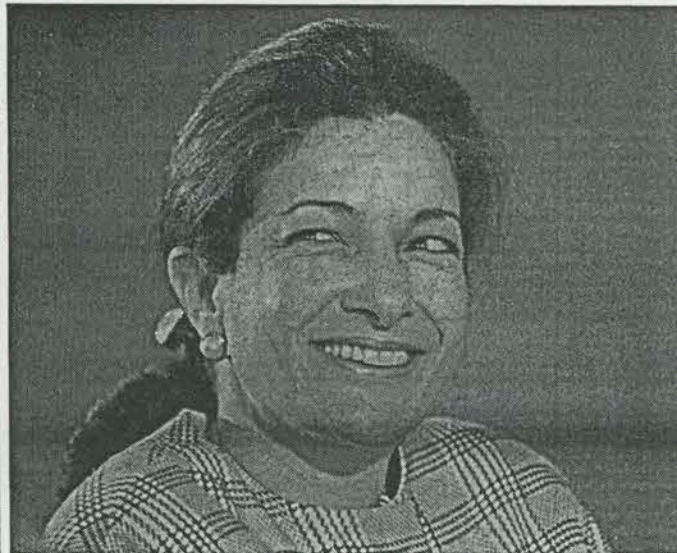


Photo by Maureen Keating

But Rep. Olympia Snowe is not without her negatives: She was re-elected last time with only 49 percent in a district that delivered Ross Perot his highest tally in 1992. She's also lagging in fundraising, according to recent FEC filings.

## Entire Maine Delegation Up for Grabs

Continued from page 32

While approval from the Justice Department is now likely, sanction of the new map by the same panel of federal judges is less certain. If the map is rejected, the dispute would have to wait for arbitration by the Supreme Court, putting a squeeze on Louisiana's July 29 filing deadline.

Assuming that the new map holds, however, the most vulnerable House incumbents are Fields and the 7th's Rep. Jimmy Hayes (D). Both incumbents had modest war chests — \$11,700 for Fields and \$80,700 for Hayes — as of March 31.

Both are being eyed by well-known Democratic challengers, as well as former GOP Rep. Clyde Holloway, whose 8th district was lost to reapportionment in 1992.

Holloway is said to have originally planned a rematch against Rep. Richard Baker (R) in the 6th district, but Baker, who beat Holloway 51 percent of the vote in 1992, would have a stronger hold on his seat under the new map, which lets him keep his Baton Rouge-area stronghold and gives him more majority-white parishes in the northeast. Baker spent nearly \$50,000 from his campaign fund in the first quarter of this year, leaving him with \$130,900 on hand.

Holloway's home and wholesale nursery business would land in the 4th district under the new map, but he could just as easily run in the 6th or 7th districts.

His year-end 1993 campaign finance report shows him about \$30,000 in debt, with only \$25 in receipts. Holloway did not file a campaign finance report for the first quarter of this year.

Fields's new 4th district has a 55 percent black-voter registration, compared to 63 percent under the old lines, which opens him up to a white challenger since white turnout in Louisiana is typically 7 to 8 percent higher.

Democratic state Sen. Larry Bankston of east Baton Rouge, who is white, is the most likely primary challenger to Fields, but Bankston's name has been floated for Baker's 6th district as well. Former state Rep. Al Ater is another possible Democratic challenger to Baker.

The new reapportionment plan has given Louisiana's 7th district more territory in the western part of the state, making it tougher for Hayes to win since his residence and much of his support is in the east.

Dennis Stine, state commissioner of administration under former Louisiana Gov. Buddy Roemer, as well as a former state legislator

and lumber company heir from Lake Charles, may run against Hayes in the primary but said he won't decide until the redistricting dispute is settled. State Rep. Chris John may also try for the Democratic nod in the 7th district.

In the 5th district, GOP Rep. Jim McCrery is seen as slightly more vulnerable after reapportionment, which would increase his black constituency from 19 to 23 percent. But the only potential challenger of either party as yet to consider a run against McCrery — who won 63 percent of the vote in 1992 and has \$307,000 in his campaign fund — is Democrat Lou Burnett, who worked as AA to the candidate. McCrery beat in 1992, former Rep. Jerry Huckaby (D-La).

### Maine

Filing Deadline: Closed  
Primary Date: June 14

#### Senate

Open Seat: George Mitchell (D) is retiring  
Outlook: Toss Up

Lacking primary opponents, Maine Reps. Tom Andrews (D) and Olympia Snowe (R) will be shooting at each other from now until November for the seat being vacated by the Majority Leader. Fireworks are almost guaranteed: Both Members are fierce campaigners, and already there is no love lost between them. Their battle is expected to be one of the

hottest open-seat contests of the year and has national symbolism because of the current occupant. Both parties are expected to pour resources into the race, making it almost certainly the most expensive contest in Maine history.

Republicans are talking more optimistically than Democrats, claiming moderate Snowe has the potential to clobber liberal Andrews in this largely rural state. In particular, in this state of avid game hunters, Andrews will be vulnerable on gun control — he's for it, she's not.

But the GOP case has some flaws: Two-term Andrews, 41, has won his district with at least 60 percent in his races, while eight-term Snowe, 47, won with just 49 percent in 1992 and 51 percent in 1990.

Republicans also claim Andrews will suffer for supporting the closure of Loring Air Force Base, a major economic blow to the state. But the decision to close Loring was actually out of Andrews's hands for the most part, and base-closing politics have proven to have remarkably little salience nationwide.

Snowe could also suffer from linkage to the state's unpopular outgoing Gov. John McKernan (R), her husband.

Andrews has the fundraising edge out of the blocks, with \$215,000 on hand as of March 31 to Snowe's \$146,000. But Andrews could be hampered by his decision not to accept AFL-CIO PAC money, a hangover from the union's tactics during the NAFTA debate (when Andrews was opposed to the

trade pact but declined the PAC money because of the appearance that his vote was being bought). It's important to note, however, that he declined only AFL-CIO money; other labor unions could well compensate for the absence of AFL-CIO PAC support.

A wild card in calling this race is the state's independent streak: Ross Perot pulled one of his best performances here in 1992, tying George Bush with 30 percent while Bill Clinton won the state with 39 percent. Both the Andrews and Snowe camps are claiming good relations with the Perotistas.

### House

1st district  
Open Seat: Tom Andrews (D) is running for Senate

Outlook: Toss Up

Four Republicans and four Democrats, all substantial candidates, are vying for their parties' respective nominations to succeed Andrews. Because the seat became vacant only recently, the situation is very unsettled and observers are hesitant to make predictions about primary outcomes.

Calling the general is even more problematic. The 1st, which encompasses the southwest corner of the state and includes Portland and Augusta, is about split in party registration but is believed to be slightly more favorable to a Democrat. However, much will depend on who's nominated. Many Re-

Continued on page 36

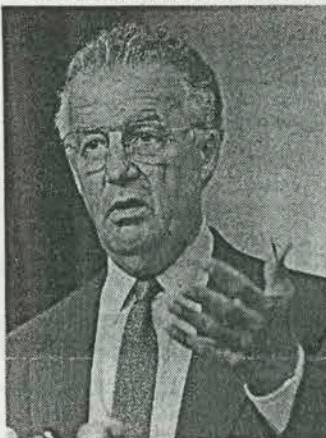


Photo by Laura Patterson

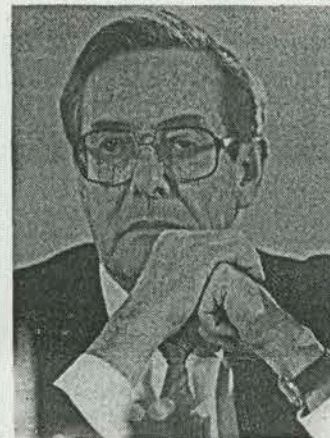


Photo by Laura Patterson

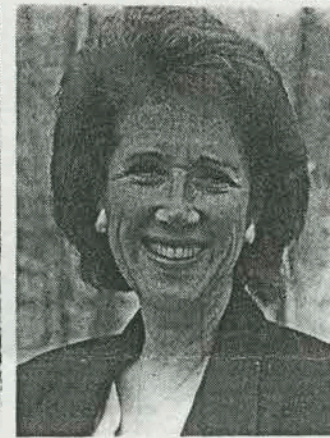


Photo by Laura Patterson

Although Roll Call rates the race "Likely Democratic," Maryland Sen. Paul Sarbanes (left) faces his toughest race ever. First, the GOP primary features a bruising battle between former Tennessee Sen. Bill Brock (center) and local official Ruthann Aron.



# Alabama to Michigan: The National Outlook

Continued from page 34  
publicans fear they will throw the seat away if they put forward a conservative.

The four Democratic candidates are state Senate President Dennis Dutremble, state Sen. Bonnie Titcomb, Secretary of State William Diamond, and former Portland Mayor William Trough. All have substantial bases and it's anyone's guess who leads, though Dutremble may be best known. No one has raised much money yet in this late-starting race, though Titcomb was just endorsed by EMILY's List and should see the national checks starting to roll in.

Diamond and Trough hail from Portland and are strong there; Dutremble's base is the well populated area south of Portland. Titcomb is the only candidate from the upper part of the district.

The handicapping is only slightly easier on the GOP side. Conservative attorney James Longley, son of the former Independent governor, is thought to be the leading candidate because of name recognition and support from key conservatives. But former GOP chair Kevin Keogh and state Sen. Charles Summers are hard-driving moderates who may have better appeal. Conservative Portland City Councilman Ted Rand is considered a likely also-ran; he opposed the popular Portland baseball stadium. Fundraising was also off to a slow start on the GOP side of the ledger.

2nd district

Open Seat: Olympia Snowe (R) is running for Senate

Outlook: Toss Up

The 2nd district is the largest in area east of the Mississippi. It should be naturally more favorable to Republicans because of its rural

character but has proven unsympathetic in recent years to Snowe and is about split in party registration. In 1992, the highest Perot vote in the country, 33 percent, was here.

The leaders for the GOP nomination are thought to be state Reps. Stephen Zirkilton and Richard Bennett, both of whom flirted with Senate bids before Mitchell bowed out. Zirkilton pushed aside Bennett for the Senate nomination (Bennett planned to run, then backed out in deferment to Zirkilton) and is now seeking to beat him at the polls in the House race.

Zirkilton, who narrated television commercials and is a political advertising consultant, is considered the more skillful politician in GOP circles. But Bennett is a former state GOP chair and is also highly regarded.

Also in the Republican race are Ross Perot follower and former Senate candidate Glenn MacNaughton and attorney Hollis Greenlaw of Fairfield. Neither is expected to be much of a factor.

Seven candidates, five of them major contenders, are seeking the Democratic nod. Two women, state Rep. Mary Cathcart and Androsoggin County prosecutor Janet Mills, are thought to be strong contenders. Each has raised about \$40,000 (including substantial personal funds).

The three strongest male candidates are former state party chair James Mitchell, nephew of Sen. George (no word on how much help he'll be getting from the Majority Leader, but he's already raised \$66,600), Lewiston Mayor James Howaniet (no report on money), and state Sen. John Baldacci (who raised \$13,900, with \$10,000 from himself).

The other two candidates are former Andrews aide Jean Hay and salmon farmer

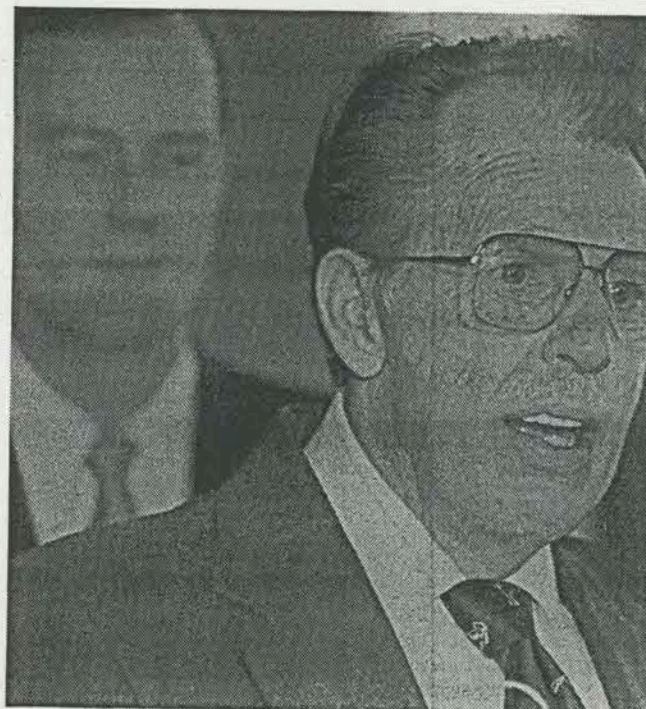


Photo by L

He's been spared significant primary opposition, but Maryland fresh Roscoe Bartlett has attracted a big group of Democrats eager to oust Shawn Hallisey, neither of whom is being taken seriously.

## Maryland

Filing Deadline: July 5

Primary Date: Sept. 13

## Senate

Incumbent: Paul Sarbanes (D)

3rd term (62 percent)

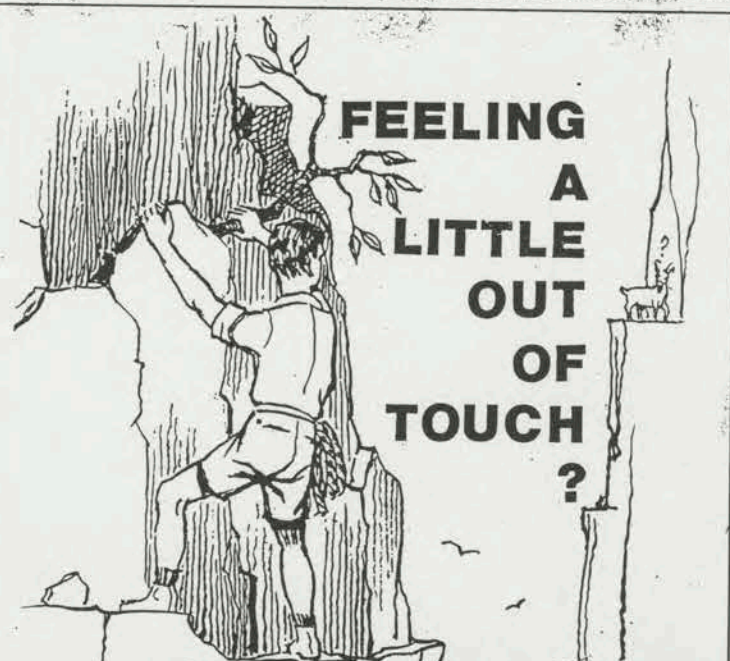
Outlook: Likely Democratic

With three credible primary candidates, two of whom have substantial personal

wealth behind them — and a son-Dixon poll showing that one of Maryland's registered voters (perhaps unduly so) about the this seat.

The GOP contenders are nessee Sen. Bill Brock, Montg ty Planning Commissioner Ru and state Del. Ron Franks.

If he won the seat, Brock wo ly person ever popularly electe two different states in the Sen his Republican opponents aren voters forget the carpetbagger



Catch up on the latest changes  
in Washington's influence community with

## Washington Representatives 1994

The authoritative guide to Washington lobbyists and special  
interest advocates since 1977

Updated and Confirmed every year

1994 Edition appears on or about May 15, 1994

Mail or Fax your order to

Columbia Books, Inc., Publishers

1212 New York Ave., N.W., Suite 330

Washington, DC 20005

Tel: (202) 898-0662 Fax: (202) 898-0775

## Managed Care

Feeling maxed out, taxed out, and stressed out? It's going around the Hill. But relief is located on Maryland's Eastern Shore—just one hour of easy direct driving from Washington and Baltimore. A carefree meeting place just far enough away to awaken creativity and productivity! Yet close enough to suit your attendees and budget. With 114 recently renovated guest rooms, 11 meeting rooms, private dining and banquet facilities, a superb restaurant, rustic bar, and meeting accommodations up to 300.

### Deficit Reduction Government Packages

\$40

per person per night  
double occupancy  
room only

Package available  
Sunday through  
Thursday with a ten  
room minimum.

\$74

per person per night  
double occupancy  
breakfast, lunch,  
and dinner

Based on availability.

\$89

per person per night  
single occupancy  
breakfast, lunch,  
and dinner

New Regulation  
Smoke Detectors  
& Sprinkler System.

\$107

per person per night  
single occupancy  
Full American Plan  
& two coffee breaks

THE Tidewater Inn & Conference Cen

EASTON, MARYLAND. FOR RESERVATIONS, CALL 410-822-1300 or 1-800-237-8775



## **MAINE**

### **Kevin Keogh Chairman**



#### **Present**

Chairman, Maine Republican Party, elected - December 5, 1992

Board of Directors, Rockland Rotary

Board of Directors, Maine Association of Broadcasters

General Manager and Owner, WQSS Radio Station

#### **Previous**

Vice President, Alfa Records

National Promotions Director, Bearsville-Warner Brothers  
Records

National Promotions Director, 20th Century Fox Records

#### **Personal**

Spouse: Julie

Children: Two

Education: B.A., University of Dayton

3 Wade

Augusta, ME 04330

(207) 236-2452 (o)

(207) 236-4227 (f)

(207) 236-6347 (h)



## **MAINE**

**Doris M. Russell**  
**National Committeewoman**



### **Present**

National Committeewoman, Maine, elected -  
December 13, 1986

### **Previous**

Governor's Commission on Children and Youth, 1960 - 1966  
Chairman, School Union 93, 1969 - 1970  
Vice Chairman, Hancock County GOP, 1972 - 1975  
Member, Hancock County GOP, 1966 - ; Chairman, 1975 -  
1976  
Member, Castine Town GOP, 1970 - ; Chairman, 1975 - 1982  
Vice Chairman, Maine Republican Party, 1984 - 1986  
Castine Appeals Board, 1970 - 1977; Chairman, 1972 - 1977  
Director, Castine Health Service Committee, 1988 - 1991  
Castine Planning Board, 1979 - 1984; Chairman, 1982 - 1984  
President, Friend of Library, 1986  
Director, Castine Trust, 1985 - 1989  
Castine School Commission, 9 years; Chairman, 3 years

### **RNC Activity**

Delegate, Republican National Convention, 1976, 1980, 1984,  
1988, 1992  
Member, Committee on Rules, Republican National  
Convention, 1976, 1984, 1988  
Member, Committee on Resolutions, Republican National  
Convention, 1980, 1992  
Member, RNC Rules Committee, 1990 - ; Vice Chairman,  
1993 -

(cont.)

(cont.)

**Personal**

Spouse: Robert F. Russell, M.D.

Children: Six; 16 grandchildren

Education: A.B., Briarcliff College; University of Maine

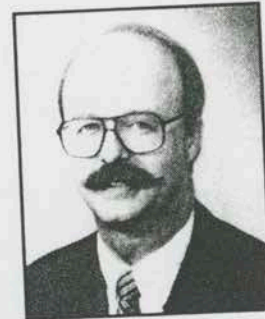
Post Office Box 63  
Castine, ME 04421

(207) 326-4374 (h)



## **MAINE**

**Kenneth M. Cole, III**  
**National Committeeman**



### **Present**

National Committeeman, Maine, elected - December 1, 1990  
Member, American, Maine and Cumberland Bar Associations  
Portland Planning Board, (Chairman, 1993) 1985 -  
Partner / Director, Jensen, Baird, Gardner and Henry, 1972 -

### **Previous**

Chairman / Member, Windham GOP Town Committee, 1976 -  
1985  
Candidate, Maine Senate, 1984  
Caucus Chairman / Member, Portland Republican City  
Committee, 1985 - 1988  
Member, Maine Republican State Committee, 1982 - 1986  
Legal Advisor, Maine Republican State Committee, 1986 - 1990  
Co-Chairman, Committee to Elect and Re-Elect Governor John  
McKernan, 1986, 1990  
Co-Chairman, Maine Bush - Quayle, 1992

### **RNC Activity**

Member, Committee on Call, Republican National Committee,  
1992

### **Personal**

Spouse: Nancy  
Children: Four  
Education: B.A., Bowdoin College; J.D., Cornell University

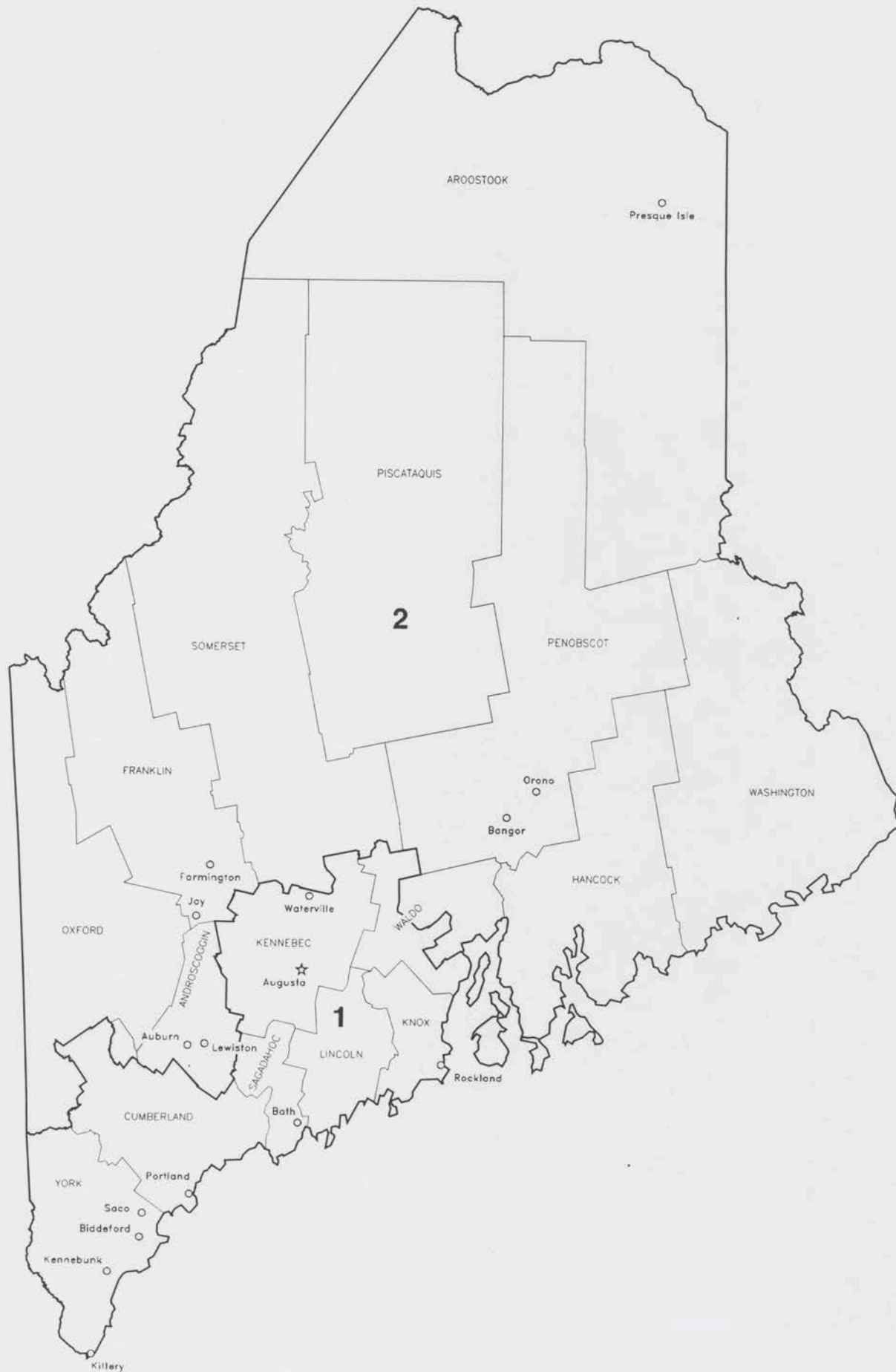
(cont.)

(cont.)

Post Office Box 4510  
Portland, ME 04112

(207) 775-7271 (o)  
(207) 775-7935 (f)  
(207) 772-1415 (h)





MAY 19, 1994

TO: SENATOR DOLE  
FROM: DAN STANLEY  
SUBJECT: DEFENSE ISSUES IN MAINE

- Loring AFB, a former SAC bomber base, was designated for closure during the '91 BRAC round. This hit the local economy hard -- 10,000 jobs were lost.
- As things turned out, Loring probably should not have been closed. The concern at the time was the short flight time from Soviet SSBN's off the coast. With that gone, Loring was a pretty low cost base to operate.
- Environmental clean up and conversion efforts continue. Projected savings of about \$182 million in 1997 will not materialize -- and then lower and later.
- Snowe is promoting defense conversion and community assistance initiatives. Thus far, such programs have been misdirected and wasteful (in the billions). She wants a czar to over see these efforts. Democrats have been using the public check book to fix these problems, Snowe wants to apply ideas, free market principles of trade, and directed assistance.
- As we draw down the defense budget, we cannot break faith with our military personnel or our communities that have been hit hard by base closures. We can start by building down, not burning down our defense.
- Portsmouth Naval Shipyard (NH) (on the border and a large regional employer) is concerned about closure and downsizing. They do submarine overhauls. General support for slipping BRAC.
- Bath Iron Works, Bath ME, builds the DDG-51 Navy Destroyer. Three are programmed for this year. Should Bath close, southeastern Maine would disappear.
- In '91 you asked CBO to do a study of the economic impacts of proposed defense cuts. The report noted a loss of 2.1 million jobs for cuts we are now experiencing.



# Olympia Snowe

P.O. Box 1994 Auburn Maine 04211-1994  
(207) 777-1194

FOR IMMEDIATE RELEASE  
April 30, 1994

CONTACT: KEVIN RAYE  
207/990-1994

## SNOWE LAYS OUT AGENDA, QUALIFICATIONS FOR U.S. SENATE

Underscoring the stark contrast between Maine Senate candidates in 1994, moderate GOP Congresswoman Olympia J. Snowe pledged a clear choice for Maine voters in November. Speaking at the Maine Republican Convention in Augusta Saturday morning, "This will be a positive campaign, built around a united effort, a common future and a rich fabric that makes us proud to call ourselves Mainers, and proud to be Americans," Snowe said

Snowe painted her vision of a "rising America", and said her agenda as a Senator for Maine would include:

- Fiscal restraint in government, including support for a balanced budget amendment;
- Personal choice in health care coverage that can not be dropped or denied;
- An American defense system sized to face an unstable world;
- Job creation in Maine through defense conversion, economic modernization and exports to world markets;
- Revolutionized education, job training and school-to-work systems to prepare citizens for the future; and
- Continued leadership in providing equality and opportunity to the women of Maine and America.

"The next six years will determine both the quality of life and the standard of living we as Americans can expect for the first part of the next century," Snowe said. "We must do all we can in the remaining part of this decade to prepare our children, our students and our workforce for the challenges that await us."

Snowe emphasized her commitment to fiscal restraint in government, including a balanced budget amendment to the U.S. Constitution. "I have fought against wasteful government spending and pork barrel projects, and I have fought against the boat tax, the gas tax, the estate tax, ... and against higher taxes on workers and small businesses," Snowe said.

- more -

*Paid for by Citizens for Olympia J. Snowe Committee.  
Contributions are not deductible as charitable contributions for Federal income tax purposes.  
Printed on recycled paper with soybean ink.*

-2-

Snowe said that as a U.S. Senator, she would "fight for a balanced budget amendment and for responsible budgets that encourage small business growth and expansion, and mean jobs for people all over Maine." She said she would continue to fight for responsible tools to restrain government spending, including a Presidential line item veto, and prohibition of unfunded federal mandates on small communities.

On health care reform, Snowe advocated a bipartisan overhaul of the private health care system to make it "affordable and accessible, and to guarantee no one could ever be denied or dropped from health insurance coverage."

"Government exists to solve the kinds of problems that people cannot solve or are unable to solve themselves, and I believe not only in the responsibility of individuals to their nation, but in the power of the individual over the power of government," she said.

Snowe said that events in North Korea, the Middle East and Bosnia showed the need for a strong defense. "In a dangerous and unpredictable world made even more so because of a weak foreign policy, America needs a national defense, and it must be second to none," she said. "We owe that much to those who fought before us to protect and preserve the freedoms we enjoy today ... and to those who will follow us in the next century."

Snowe said she believes America's changing defense posture creates opportunities for Maine. "As your Senator, I will continue to craft and work for programs that will guide our state through the defense conversion process," she said.

"My plan will create a defense conversion czar to make conversion a priority, and help guide communities hard-hit by recent base closures into a future that is economically secure and stable," Snowe said. And she said she would work to open export markets for former defense contractors, "just as I urged the President to certify loan guarantees that will help BIW become more competitive in shipbuilding for foreign markets."

So that Maine people share in the opportunities of a global market, Snowe said she would work to revolutionize American education, job training and school-to-work systems.

"We must prepare our students and our workers for the competitive, global and interdependent world of tomorrow. Our future will be shaped and framed by our ability to educate and train our workforce to adapt to new technologies," Snowe said. "We must give them the skills they need to secure and keep good-paying, long-lasting, high-skill jobs."

Building on her vision for the people of Maine and America, Snowe said that as Senator, she would also continue her "fight for equality of opportunity for the women of Maine and America in the classroom...in the workplace...and in health care". She also said tough crime control legislation would help preserve America's quality of life. "There is no reason why the greatest nation on earth should also be the most violent," she said.

- 30 -



**U.S. Senate  
Republican Policy  
Committee**

Don Nickles, Chairman  
Kelly D. Johnston, Staff Director



**U.S. House  
Republican  
Conference**

Dick Arney, Chairman  
Kerry Knott, Executive Director

**The Health Security Act's Impact On MAINE**

**JOB LOSS:** A study by two Ohio University economists for the American Legislative Exchange Council (ALEC) projects Maine would lose 4,800 jobs. CONSAD Research Corporation, an econometric forecasting firm, estimates that 3,852 Maine workers would lose their jobs, and another 106,179 would face reduced wages, hours or benefits.

**WAGES AND BENEFITS LOST:** According to the ALEC study, Maine workers would suffer a loss of wages and benefits of \$440 million, while CONSAD estimates a drop of more than \$126 million in wages alone. The CONSAD study observes, "when business owners are faced with increased labor costs due to health care reform, they will attempt to pass the increase on to employees in the form of lower wages and fewer benefits."

**PERSONAL INCOME LOSS:** Maine residents would lose \$530 million in personal income, concludes the ALEC study, or a loss of \$1,640 to the average family of four.

**MEDICARE IMPACT:** Maine hospitals would feel the strain of the \$118 billion in Medicare cuts contained in the President's proposal. An analysis by Lewin-VHI for the American Hospital Association estimates that by the year 2000 the Clinton plan would result in Medicare reimbursing Maine hospitals only 56 cents for every dollar in services rendered.

The study notes: "Some communities may see their hospitals close for the wrong reasons--not because they are no longer needed, but because they are financially weak...These hospitals may be the very ones that need to remain open to assure access and coverage to underserved populations and achieve the broader goals of health care reform."

**STATE/LOCAL REVENUE IMPACT:** According to the ALEC study, "It is argued that the Administration's health care plan is a windfall to states. There are two factors which proponents of this point of view neglect which essentially negate the validity of this argument. First, state and local governments will be paying health care taxes ('premiums') on their own employees under the Administration's plan...Second, and far more substantial, the decline in personal income discussed above means a substantial loss in state tax revenues."

Consequently, the ALEC study concludes that Maine would lose \$84 million annually in much needed revenue.



# **SENATOR BOB DOLE**

## **OLYMPIA SNOWE EVENT**

**\*BEFORE I TALK ABOUT  
MAINE'S NEXT SENATOR, LET ME  
SPEAK FOR A MINUTE ABOUT  
MAINE'S CURRENT SENATORS.**

**NO DOUBT ABOUT IT, BILL  
COHEN IS ONE OF THE MOST  
RESPECTED MEMBERS OF THE**

**SENATE. HE'S RESPECTED FOR  
HIS INTELLIGENCE. HE'S  
RESPECTED FOR HIS INTEGRITY.  
AND HE'S RESPECTED FOR HIS  
EXPERTISE ON NATIONAL  
DEFENSE ISSUES.**

**AND LET ME BE FRANK IN  
SAYING THAT GEORGE  
MITCHELL IS ALSO VERY WELL  
RESPECTED.**



**THE SENATE COULD NOT  
RUN IF THE MAJORITY LEADER  
AND THE MINORITY LEADER DID  
NOT HAVE A RELATIONSHIP  
BASED ON RESPECT AND TRUST.**

**SENATOR MITCHELL AND I  
USUALLY CANCEL EACH OTHER  
OUT WITH OUR VOTE, BUT I DO  
CONSIDER HIM A GOOD FRIEND.**

GEORGE SOMETIME CALLS  
ME MR. GRIDLOCK....BUT AFTER I  
RECEIVED AN HONORARY  
DEGREE LAST YEAR FROM  
COLBY COLLEGE OVER IN  
WATERVILLE, I TOLD HIM THAT  
HE WOULD HAVE TO START  
CALLING ME "DR. GRIDLOCK."



I WANT TO HELP GEORGE  
OUT. HIS DEMOCRATS ARE  
HAVING A LITTLE BIT OF A  
CONTEST OVER WHO WILL  
SUCCEED GEORGE AS MAJORITY  
LEADER.

WELL, IF MAINE SENDS  
OLYMPIA SNOWE TO THE  
SENATE, THEN THERE'S A GOOD  
CHANCE THAT WE CAN PUT AN

5 4A

**END TO THAT SQUABBLING--  
BECAUSE THE MAJORITY  
LEADER OF THE SENATE WILL  
BE BOB DOLE.**

**\*I'VE CAMPAIGNED FOR A  
LOT OF CANDIDATES IN A LOT  
OF STATES THIS YEAR, BUT I  
DON'T THINK I'VE EVER SEEN A  
RACE WHERE THE CHOICE IS SO**



CLEAR AS RIGHT HERE IN  
MAINE.

\*ONE OF YOUR CHOICES IS  
A FELLOW NAMED TOM  
ANDREWS. NOW, I DON'T KNOW  
MR. ANDREWS, OR HAVE  
ANYTHING AGAINST HIM.

\*BUT LET ME QUOTE TO  
YOU FROM THE WELL-  
RESPECTED AND NON-PARTISAN

# ALMANAC OF AMERICAN POLITICS.

QUOTE: "ANDREWS  
POSITIONS ARE DOWN-THE-LINE  
LIBERAL: FOR MORE  
PROGRESSIVE TAXES...(FOR)  
NATIONAL HEALTH  
INSURANCE...(FOR) A 50% CUT IN  
DEFENSE SPENDING OVER 10  
YEARS." UNQUOTE.



**\*IT'S NO WONDER THAT  
BOTH THE AMERICANS WITH  
DEMOCRATIC ACTION, AND THE  
AMERICAN CIVIL LIBERTIES  
UNION, HAVE GIVEN  
CONGRESSMAN ANDREWS  
PERFECT SCORES OF 100%.**

**\*THE OTHER CHOICE--THE  
RIGHT CHOICE--FOR MAINE IS  
OLYMPIA SNOWE.**

**\*INSTEAD OF SUPPORTING  
MORE TAXES, OLYMPIA  
BELIEVES IN FISCAL RESTRAINT  
IN GOVERNMENT, AND SHE HAS  
LED THE FIGHT FOR A  
BALANCED BUDGET  
AMENDMENT.**

**\*INSTEAD OF SUPPORTING  
A PLAN THAT GIVES 100% OF  
OUR HEALTH CARE SYSTEM TO**



**SHE SUPPORTS FIXING THE 15%  
OF THE SYSTEM THAT DOESN'T  
WORK.**

**\*INSTEAD OF GUTTING  
AMERICA'S DEFENSE, SHE  
BELIEVES IN MAINTAINING A  
NATIONAL SECURITY STRONG  
ENOUGH TO MEET THE  
CHALLENGES OF AN UNSTABLE  
WORLD.**

**\*AND, AS I SAID, INSTEAD  
OF VOTING FOR A LIBERAL  
DEMOCRAT FOR SENATE  
MAJORITY LEADER, OLYMPIA  
SNOWE WILL VOTE FOR BOB  
DOLE.**

**\*AND THAT WILL MAKE A  
BIG, BIG, DIFFERENCE IN THE  
DIRECTION AMERICA TAKES IN  
THE NEXT FEW YEARS.**



**\*OLYMPIA HAS SERVED IN  
THE HOUSE FOR NEARLY 16  
YEARS, AND SHE HAS NEVER  
BEEN PART OF THE MAJORITY.  
THE DEMOCRATS HAVE  
CONTROLLED THE HOUSE OF  
REPRESENTATIVES FOR 40  
STRAIGHT YEARS.**

**\*AND THEY'VE CONTROLLED  
THE SENATE FOR 32 OF THOSE**

**40 YEARS.**

**\*AND THE MESSAGE THAT  
I'M TAKING ACROSS THE NATION  
THIS YEAR IS THAT ENOUGH IS  
ENOUGH. POLLS CONTINUE TO  
SHOW THAT A MAJORITY OF  
AMERICANS BELIEVE THE  
COUNTRY IS ON THE WRONG  
TRACK.**



**\*AND WHILE I'VE NEVER  
CLAIMED THAT THE REPUBLICAN  
PARTY IS PERFECT, I DO  
BELIEVE THAT ONE WAY TO GET  
AMERICA BACK ON THE RIGHT  
TRACK IS TO PUT REPUBLICANS  
IN CHARGE OF THE HOUSE AND  
SENATE.**

**\*AND THERE'S A SIMPLE  
REASON WHY OLYMPIA AND I**

WANT TO BE PART OF A  
MAJORITY...AND THAT'S  
BECAUSE IN CONGRESS IT'S THE  
MAJORITY THAT SETS THE  
AGENDA.

\*AND REPUBLICANS HAVE  
AN AGENDA THAT IS GOOD FOR  
AMERICA AND GOOD FOR  
MAINE, AND IT WON'T GET



**ENACTED UNLESS WE HAVE A  
MAJORITY.**

**\*WHAT WOULD BE ON THE  
AGENDA IF BOB DOLE WERE  
SENATE MAJORITY LEADER AND  
NEWT GINGRICH WERE SPEAKER  
OF THE HOUSE?**

**\*WELL, LET'S START WITH A  
BALANCED BUDGET  
AMENDMENT, A LINE ITEM VETO,**

**AND A REDUCTION ON THE  
CAPITAL GAINS TAX RATE.**

**\*AND THEN WE'D ADD THE  
TOUGHEST ANTI-CRIME BILL  
POSSIBLE, A HEALTH CARE BILL  
THAT HELPS THOSE IN NEED  
WITHOUT A MASSIVE NEW  
BUREAUCRACY, AND YOU CAN  
BET THAT WE'D STOP THE**

# **GUTTING OF OUR DEFENSE BUDGET.**

**\*AND THERE'S SOMETHING  
ELSE THAT A REPUBLICAN  
SENATE AND A REPUBLICAN  
HOUSE WILL STAND FOR...AND  
THAT'S LEADERSHIP...AMERICAN  
LEADERSHIP.**

**\*AS A MEMBER OF THE  
HOUSE FOREIGN AFFAIRS**



**COMMITTEE, OLYMPIA SNOWE  
KNOWS A GREAT DEAL ABOUT  
AMERICAN LEADERSHIP--AND I  
WANT TO SPEND JUST A FEW  
MINUTES TONIGHT DISCUSSING  
THAT LEADERSHIP.**

**\*IN JUST A FEW WEEKS, I  
WILL BE PART OF A  
CONGRESSIONAL DELEGATION  
TRAVELLING TO EUROPE FOR**

# **CEREMONIES HONORING THE 50TH ANNIVERSARY OF D-DAY.**

**D-DAY MARKED MORE THAN  
THE BEGINNING OF THE END OF  
WORLD WAR II. IT ALSO  
MARKED THE BEGINNING OF  
WHAT HAS BEEN--UNDER  
REPUBLICAN AND DEMOCRAT  
PRESIDENTS ALIKE--A HALF-**

**CENTURY OF AMERICAN  
LEADERSHIP.**

**IT WAS AMERICAN  
LEADERSHIP THAT REBUILT  
EUROPE AFTER WORLD WAR II.**

**IT WAS AMERICAN  
LEADERSHIP THAT STOOD FOR  
FREEDOM IN PLACES LIKE  
KOREA AND VIETNAM.**



**IT WAS AMERICAN  
LEADERSHIP THAT STOOD  
GUARD IN EUROPE AND AROUND  
THE WORLD THROUGHOUT THE  
LONG COLD WAR.**

**IT WAS AMERICAN  
LEADERSHIP THAT HAS KEPT  
ALIVE ANY HOPE FOR PEACE IN  
THE MIDEAST.**

**IT WAS AMERICAN  
LEADERSHIP THAT KEPT  
SADDAM HUSSEIN FROM  
CONTROLLING THE WORLD'S OIL  
SUPPLY.**

**IT WAS AMERICAN  
LEADERSHIP THAT HAS ALWAYS  
PRODDED NATIONS TOWARDS  
THE PATH OF FREEDOM FOR ALL  
THEIR CITIZENS.**

**HAS THIS LEADERSHIP  
BEEN EXPENSIVE? YOU BET IT  
HAS--BOTH IN TERMS OF LIVES  
LOST AND MONEY SPENT IN  
BATTLE AND IN STANDING  
GUARD DURING THE LONG COLD  
WAR.**

**BUT HAS THIS LEADERSHIP  
BEEN WORTH THE COST?  
ABSOLUTELY. THE WORLD IS A**



**SAFER, FREER, AND BETTER  
PLACE BECAUSE OF AMERICAN  
LEADERSHIP.**

**AND LADIES AND  
GENTLEMEN, AS WE MEET HERE  
THIS EVENING, I AM VERY  
CONCERNED THAT IF SOME IN  
THIS ADMINISTRATION HAVE  
THEIR WAY, THE ERA OF**

**AMERICAN LEADERSHIP WILL  
COME TO AN END.**

**THERE ARE SOME IN THIS  
ADMINISTRATION WHO THINK  
THAT AMERICA SHOULD NO  
LONGER BE THE LEADER OF THE  
FREE WORLD.**

**THERE ARE THOSE WHO  
THINK THAT AMERICA MUST  
FOCUS SOLELY ON FIXING HER**

**OWN PROBLEMS.**

**THERE ARE THOSE WHO  
SAY THAT AMERICAN SOLDIERS  
SHOULD TAKE ORDERS FROM  
COMMANDERS APPOINTED BY  
THE UNITED NATIONS.**

**THERE ARE THOSE WHO  
FORESEE AMERICA AS JUST  
ANOTHER MEMBER OF N.A.T.O.,**



**WITH NO RESPONSIBILITY TO  
LEAD.**

**THAT SAME TALK AND  
THOSE SAME VOICES COULD  
ALSO BE HEARD IN THE DAYS  
FOLLOWING OUR VICTORY IN  
WORLD WAR II.**

**BUT AMERICA'S LEADERS  
REMEMBERED THAT THEY HAD  
LISTENED TO THOSE VOICES**

JUST TWENTY YEARS BEFORE,  
IN THE AFTERMATH OF WORLD  
WAR I. AND THEY REMEMBERED  
THAT, AS A RESULT, AMERICA  
CHECKED OUT OF WORLD  
AFFAIRS, RETREATED INTO  
ISOLATIONISM, AND SLASHED  
OUR DEFENSE--ACTIONS THAT  
WOULD BE PROVEN FOOLHARDY  
WHEN A DICTATOR MARCHED

**ACROSS EUROPE AND BOMBS  
FELL AT PEARL HARBOR.  
AMERICA'S LEADERS  
REMEMBERED. AND  
PRESIDENTS WITH NAMES LIKE  
TRUMAN, EISENHOWER,  
KENNEDY, JOHNSON, NIXON,  
FORD, CARTER, REAGAN, AND  
BUSH MADE SURE THAT**



**AMERICA REMAINED THE  
LEADER OF THE FREE WORLD.**

**THE UNITED STATES MAY  
BE AT PEACE TODAY, BUT  
EVENTS IN NORTH KOREA,  
BOSNIA, AND ELSEWHERE  
REMINDE US THAT DICTATORS  
STILL EXIST, THAT AGGRESSORS  
WHO ARE NOT STOPPED WILL  
ONLY GROW MORE BRAZEN AND**

**MORE BLOOD-THIRSTY, AND  
THAT AMERICAN LEADERSHIP IS  
STILL REQUIRED.**

**IS AMERICA'S DESTINY TO  
BE THE WORLD'S POLICEMAN?  
NO. THERE ARE CRIMES  
AGAINST HUMANITY AND  
CRIMES AGAINST FREEDOM  
COMMITTED EVERY DAY IN  
COUNTLESS COUNTRIES**

**ACROSS THE WORLD. AND  
AMERICA DOES NOT GO IN,  
GUNS BLAZING, TO MAKE IT  
RIGHT.**

**INSTEAD, WE DO WHAT WE  
HAVE ALWAYS DONE--AND WHAT  
WE DID DURING THE LONG COLD  
WAR--WE LEAD BY EXAMPLE.  
WE SHOW THE WORLD THAT  
DEMOCRACY IS NOT JUST ONE**



**METHOD OF GOVERNMENT--IT IS  
THE ONLY METHOD. AND WE  
ALSO LEAD BY USING OUR  
ECONOMIC AND MORAL  
INFLUENCE TO BRING ABOUT  
CHANGE, AS WE DID IN SOUTH  
AFRICA.**

**AND IF WE ARE TO LEAD BY  
EXAMPLE...IF WE ARE TO  
MAINTAIN OUR CREDIBILITY AS**

**AN ECONOMIC AND MORAL  
INFLUENCE, THEN WE MUST  
DEAL WITH OUR PROBLEMS--  
LIKE THE DEFICIT AND LIKE  
CRIME. AND WE MUST  
REMEMBER AND TEACH THE  
VALUES THAT MADE AMERICA  
GREAT--VALUES LIKE DECENCY,  
HONESTY, AND INDIVIDUAL  
RESPONSIBILITY.**

**BUT LET ME BE CLEAR:  
LEADING BY EXAMPLE WILL NOT  
ALWAYS SUFFICE. FOR  
MILITARY STRENGTH AND  
DIPLOMATIC RESOLVE IS  
ESSENTIAL TO SUCCESSFUL  
LEADERSHIP. WITHOUT THEM,  
OUR EXAMPLE--NO MATTER HOW  
MERITORIOUS--WILL BE  
REJECTED OR IGNORED.**



**THERE WILL BE TIMES  
WHEN AMERICA'S INTERESTS  
ARE AT STAKE... WHEN  
FREEDOM IS  
THREATENED...WHEN, LIKE IT OR  
NOT, WE ARE THE ONLY "COP  
ON THE BEAT." AND UNLESS WE  
ARE PREPARED TO STAND BY  
WHILE OUR INTERESTS ARE  
THREATENED OR DESTROYED,**

**WE MUST BE PREPARED TO  
LEAD--IN COMBINATION WITH  
FRIENDS AND ALLIES IF  
POSSIBLE, BUT ALONE IF  
NECESSARY.**

**IT IS HARD TO IMAGINE THE  
WORLD TODAY HAD THE  
ATTITUDE THAT SOME NOW  
ADVOCATE PREVAILED THE PAST  
HALF-CENTURY.**

IMAGINE THAT D-DAY NEVER  
HAPPENED, AND THAT HITLER'S  
ARMIES CONQUERED EUROPE.  
IMAGINE THAT KRUSCHEV AND  
NOT NIXON WAS THE WINNER OF  
THE "KITCHEN DEBATE," AND  
AMERICA'S CHILDREN LIVED  
UNDER COMMUNISM, RATHER  
THAN RUSSIA'S CHILDREN  
LIVING UNDER DEMOCRACY.



**IMAGINE SADDAM HUSSEIN IN  
CONTROL OF THE MAJORITY OF  
THE WORLD'S OIL SUPPLY.**

**I DON'T KNOW WHAT THE  
FUTURE HOLDS, BUT I DO KNOW  
THAT THE WORLD CANNOT  
AFFORD A FUTURE WITHOUT  
AMERICAN LEADERSHIP...AND I  
KNOW THAT MAINE'S FUTURE  
WOULD BE VERY WELL SERVED**

**BY SENDING OLYMPIA SNOWE  
TO THE SENATE.**

**THANK YOU VERY MUCH.**