



Prairie Mission Retirement Village



*People caring about people,
in the loving spirit of Christ*

On this day of August 29, 1992 the PMRV committee and the City of St. Paul are officially announcing the fulfillment of a dream. They wish to share with the residents and the area communities their joy and happiness.

The Village will include a four phase plan.

- Phase I** Spacious self owned Garden Homes
- Phase II** Attractive Independent or assisted care apartments
- Phase III** Skilled Nursing Center
- Phase IV** Medical Clinic and Pharmacy

We pledge to strive for excellence in quality care and the encouragement of independent living.

The Village will be located in serene country surroundings offering a peaceful private lifestyle.

Over the years the love and concern for our families and friends has been the driving force behind our dreams of the future.

We welcome all of you.

Please contact our committee for more information.

- Larry Smith, *Chairman*
- Lu Reeves, *Vice Chairman*
- Ed Born, *Treasurer*
- Marilyn McClure, *Secretary*
- Joan Cox, *Assistant Secretary*

August 29, 1992

Prairie Mission Retirement Village

Official Announcement Ceremony

Invocation

Welcoming

Acknowledgements

Introductions

Senator Robert Dole

Ground Breaking

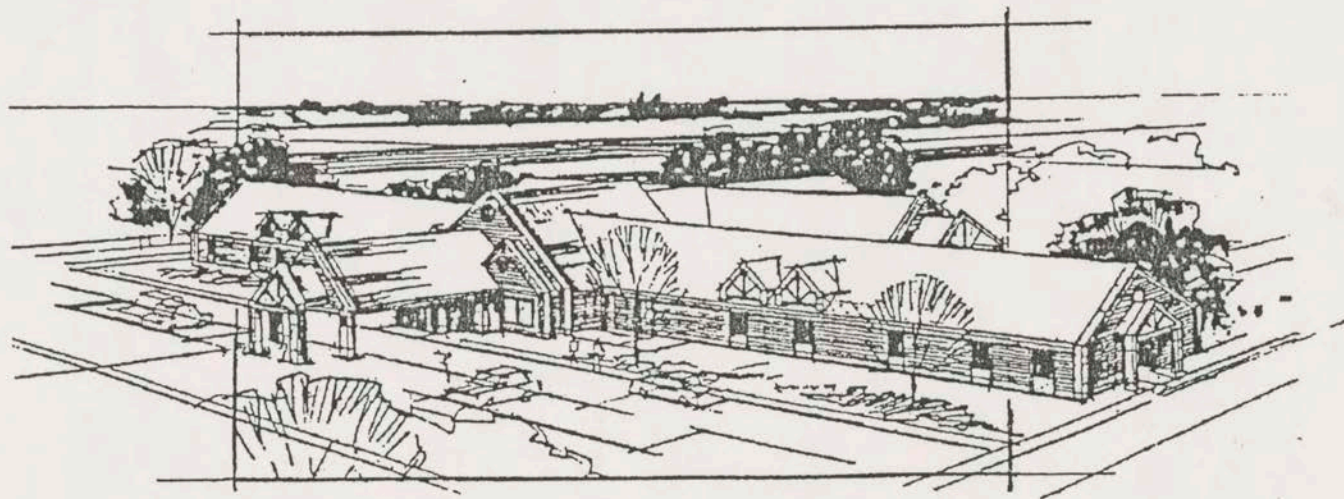
Closing Prayer

God Bless America . . . St. Francis Choir

Please Join In

PRAIRIE MISSION RETIREMENT COMPLEX

ST. PAUL, KANSAS



**BACK IN 1985, THE NEED FOR
BETTER RESOURCES TO CARE
FOR OUR ELDERLY WAS
RECOGNIZED AS A #1 PRIORITY
IN ST. PAUL. SOON
THEREAFTER, THE ST. PAUL
COMMUNITY SET TO WORK IN
ORDER TO FILL THIS NEED.**

**I FIRST HEARD ABOUT THIS
PROJECT BACK IN 1986, WHEN
LARRY SMITH AND MAYOR GERT
GALLO WROTE TO TELL ME
ABOUT ST. PAUL'S DESIRE TO
ESTABLISH AN ADULT CARE
FACILITY. BUT, AS WITH MANY
OF THESE TYPES OF PROJECTS,
SOME TYPE OF FINANCIAL
ASSISTANCE IS NECESSARY TO**

MAKE THEM A REALITY.

**THROUGH MY OFFICE, WE
TRIED TO BE OF ASSISTANCE BY
PROVIDING INFORMATION
ABOUT PROGRAMS SUCH AS
THE COMMUNITY FACILITY LOAN
PROGRAM, ADMINISTERED
THROUGH THE FARMERS HOME
ADMINISTRATION, AND THE**

COMMUNITY DEVELOPMENT

BLOCK GRANT PROGRAM,

**ADMINISTERED THROUGH THE
KANSAS DEPARTMENT OF
COMMERCE.**

**IN THE YEARS THAT
FOLLOWED, A LOT OF HARD
WORK WENT INTO THINGS LIKE
THE FEASIBILITY STUDY, DESIGN**

**PLANS, PREPARING THE
APPLICATIONS FOR
ASSISTANCE, HOLDING PUBLIC
HEARINGS, AND NUMEROUS
MEETINGS WITH OFFICIALS AT
THE FARMERS HOME
ADMINISTRATION. THROUGH IT
ALL I BECAME IMPRESSED WITH
THE FACT THAT ST. PAUL,
KANSAS IS A COMMUNITY WITH**

**A LOT OF PRIDE AND
DETERMINATION.**

**THESE QUALITIES HAVE PAID
OFF, BRINGING US HERE TODAY
TO BREAK GROUND FOR AN
IMPORTANT COMMUNITY
RESOURCE, THE PRAIRIE
MISSION RETIREMENT VILLAGE.
THE COMPLETED FACILITY WILL**

**PROVIDE A 40 SWING BED
NURSING HOME FACILITY AND 8
ASSISTED LIVING UNITS.**

**THE FACILITY WILL ALSO
PROVIDE SERVICES UNIQUE TO
THIS AREA OF KANSAS, WITH 9
OF THE 40 BEDS TO BE
DEDICATED TO THE CARE OF
PERSONS WITH ALZHEIMER'S**

DISEASE.

**IT WILL NOW BE POSSIBLE
FOR OUR SENIOR CITIZENS
REQUIRING SKILLED NURSING
CARE OR STRUCTURED LIVING
ASSISTANCE TO REMAIN HERE
IN ST. PAUL, AMONG FRIENDS,
FAMILY, AND THE HOME THAT
MANY HAVE KNOWN**

THROUGHOUT THEIR LIFE.

**I AM PLEASED TO BE HERE TO
SHARE THIS OCCASION WITH
YOU, AND WANT TO TAKE THIS
OPPORTUNITY TO
ACKNOWLEDGE A FEW OF THE
PEOPLE LIKE: MAYOR GERT
GALLO, LARRY SMITH, LOU
REEVES AND THE OTHER**

**PRAIRIE MISSION BOARD
MEMBERS, OFFICIALS AT THE
FARMERS HOME
ADMINISTRATION
(REPRESENTED HERE TODAY BY
MR. JOHN PRICE), THE KANSAS
DEPARTMENT OF COMMERCE,
AND THE MANY BUSINESS
LEADERS AND RESIDENTS IN ST.
PAUL WHO HAVE WORKED**

TOGETHER TO MAKE THE PRAIRIE MISSION RETIREMENT VILLAGE A REALITY.

GROUND BREAKING FOR
PRAIRIE MISSION RETIREMENT VILLAGE
ST. PAUL, KANSAS

LOCATION - EAST SIDE OF ST. FRANCIS CHURCH

PLATFORM & MICROPHONE

INTRODUCTORY MUSIC - THE "MISSION MINSTRELS,"
AN ADULT CHOIR DIRECTED BY JOLENE BORN.

PROGRAM BEGINS WHEN YOU ARRIVE AT 3:30 P.M. GUESTS HAVE BEEN
ASKED TO BE PARKED AND SEATED BY 3:15 P.M.

MET BY: CORKY BEACHNER (D), BEACHNER CONSTRUCTION COMPANY
LARRY SMITH, PRESIDENT OF THE RETIREMENT VILLAGE
LOU REEVES, COORDINATOR OF THIS EVENT
COMMUNITY LEADER, & GOP ACTIVIST.

SEATED ON THE PLATFORM

LARRY SMITH, PRESIDENT OF THE RETIREMENT VILLAGE
MAYOR GERT GALLO
JOHN PRICE, FmHA STATE ADMINISTRATOR
CAROL MORGAN, KANSAS DEPARTMENT OF COMMERCE
DENNIS STAFFORD, FmHA DISTRICT OFFICIAL IN CHANUTE
MONSIGNOR VINCENT HOGAN, PARISH PRIEST
REV. WIERSMA, METHODIST MINISTER

PROGRAM

EMCEE

LARRY SMITH

INVOCATION

MONSIGNOR HOGAN

WELCOME & BRIEF HISTORY

LARRY SMITH

INTRODUCTION OF SENATOR DOLE

LARRY SMITH

COMMENTS

SENATOR DOLE

GROUND BREAKING

BULLDOZERS. HARD HATS FOR
PLATFORM GUESTS.

CLOSING

REV. WIERSMA

"GOD BLESS AMERICA"

TEA & COOKIE RECEPTION IMMEDIATELY FOLLOWING IN THE PARISH HALL,
A SHORT WALK TO THE OTHER SIDE OF THE CHURCH.

FORMAT: MIX & MINGLE

0 THE \$1.2 MILLION LOW INTEREST LOAN WILL COME FROM THE RURAL
DEVELOPMENT ADMINISTRATION. OUR WICHITA OFFICE HAS BEEN
COUNSELING ST. PAUL'S LEADERS SINCE 1986.

0 WILL INCLUDE A 48 BED NURSING FACILITY, INCLUDING AN 8-BED
ALZHEIMER'S UNIT, AND 8 ASSISTED LIVING APARTMENTS. MAY ADD
8 GARDEN HOMES (7 INDIVIDUALS HAVE REQUESTED THESE.)
CONGREGATE MEAL SITE.

THE CLINIC & PHARMACY WILL SERVE THE ENTIRE COMMUNITY. ARE
DISCUSSING AFFILIATION WITH THE REGIONAL HOSPITALS.

08:28:52

08:29

SEN BOB DOLE'S OFFICE, WICHITA

001

0 BACK IN 1985, THE NEED FOR BETTER RESOURCES TO CARE FOR OUR ELDERLY WAS RECOGNIZED AS A #1 PRIORITY IN ST. PAUL. SOON THEREAFTER, THE ST. PAUL COMMUNITY SET TO WORK IN ORDER TO FILL THIS NEED.

0 I FIRST HEARD ABOUT THIS PROJECT BACK IN 1986, WHEN ~~LARRY~~
ORGANIZERS
~~SMITH AND MAYOR GARY GALLS~~ WROTE TO TELL ME ABOUT ST. PAUL'S DESIRE TO ESTABLISH AN ADULT CARE FACILITY. BUT, AS WITH MANY OF THESE TYPES OF PROJECTS, SOME TYPE OF FINANCIAL ASSISTANCE IS NECESSARY TO MAKE THEM A REALITY.

0 THROUGH MY OFFICE, WE TRIED TO BE OF ASSISTANCE BY PROVIDING INFORMATION ABOUT PROGRAMS SUCH AS THE COMMUNITY FACILITY LOAN PROGRAM, ADMINISTERED THROUGH THE FARMERS HOME ADMINISTRATION, AND THE COMMUNITY DEVELOPMENT BLOCK GRANT PROGRAM, ADMINISTERED THROUGH THE KANSAS DEPARTMENT OF COMMERCE.

0 IN THE YEARS THAT FOLLOWED, A LOT OF HARD WORK WENT INTO THINGS LIKE THE FEASIBILITY STUDY, DESIGN PLANS, PREPARING THE APPLICATIONS FOR ASSISTANCE, HOLDING PUBLIC HEARINGS, AND NUMEROUS MEETINGS WITH OFFICIALS AT THE FARMERS HOME ADMINISTRATION. THROUGH IT ALL I BECAME IMPRESSED WITH THE FACT THAT ST. PAUL, KANSAS IS A COMMUNITY WITH A LOT OF PRIDE AND DETERMINATION.

Bob Dole



NEWS

U.S. SENATOR FOR KANSAS

FROM:

SENATE REPUBLICAN LEADER

FOR IMMEDIATE RELEASE
July 10, 1992

CONTACT: WALT RIKER
(202) 224-5358

DOLE ANNOUNCES \$1.2 MILLION LOAN FOR ST. PAUL;
FUNDS WILL CONSTRUCT NEW RETIREMENT VILLAGE AND COMPLEX

WASHINGTON - Kansas Senator Bob Dole announced today that the Prairie Mission Retirement Village, Inc. of St. Paul will receive a \$1,247,600 loan to construct a 48-unit continuous care facility. The low-interest loan was awarded by U.S. Department of Agriculture's Rural Development Administration (RDA).

"I'm pleased that St. Paul has finally cleared this funding hurdle for this significant addition to the community, the Prairie Mission Retirement Village. I applaud the outstanding efforts of Mayor Gert Gallo and Lawrence Smith, President of Prairie Mission Retirement Village, Inc., and the entire community for all their hard work and determination with this project. I'm always glad to assist Kansas communities when it comes to vital projects such as providing continuous care for the elderly," said Dole. "The infusion of rural development assistance will guarantee the survival of our rural communities."

Senator Dole has been working closely with the Mayor and community leaders since 1986, providing assistance with the loan application process and serving as a liaison between the community and the USDA's Farmers Home Administration. Dole first steered the community to seek funding from the U.S. Department of Agriculture's various rural development loan programs.

The 48-unit continuous care facility will have 4 efficiency and 4 one-bedroom assisted living apartments, 31 beds for skilled nursing care and 9 beds for residents with Alzheimer's disease. There will also be an in-house pharmacy and medical clinic.

###