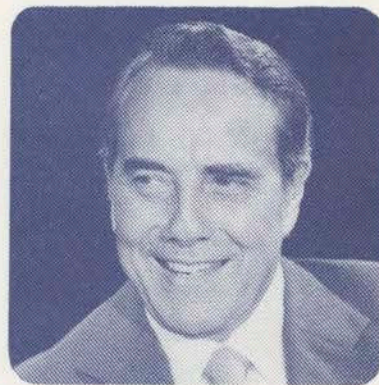


News from Senator

BOB DOLE



(R - Kansas) SH 141 Hart Building, Washington, D.C. 20510-1601

FOR IMMEDIATE RELEASE
JULY 14, 1989

CONTACT: SARA BELDEN
(202) 224-6521

DOLE: RURAL BUS CARRIERS TO PICK UP ABANDONED GREYHOUND SERVICE

Washington, D.C. -- SENATOR BOB DOLE (R-KS) ANNOUNCED TODAY THAT THREE KANSAS RURAL PUBLIC TRANSPORTATION SYSTEMS WILL PROVIDE TRANSPORTATION SERVICE ALONG ROUTES AFFECTED BY THE GREYHOUND ABANDONMENT FRIDAY ON AN AS-NEEDED BASIS. DOLE HAD ASKED GREYHOUND OFFICIALS TUESDAY TO CONTACT RURAL TRANSIT SERVICES OPERATING IN THE AREA ABOUT PICKING UP THE ABANDONED SERVICE IN AN EFFORT TO ASSIST PERSONS AFFECTED BY THE GREYHOUND LINES, INC. ABANDONMENT.

THE THREE TRANSIT SERVICES ARE:

SOUTHEASTERN KANSAS COMMUNITY ACTION PROGRAM (SEK-CAP)
GIRARD - 316-724-8204

OCCUPATIONAL CENTER OF CENTRAL KANSAS, INC.
CONCORDIA - 913-243-1984

TWIN VALLEY DEVELOPMENTAL SERVICES (TVDS)
GREENLEAF - 913-747-2251

"PERSONS WHO HAVE BEEN RELYING ON GREYHOUND FOR BUS SERVICE ALONG THE ABANDONED ROUTES WILL BE ABLE TO CALL THESE SERVICES AS THEY NEED THEM. THE TRANSPORTATION SERVICES HAVE AGREED TO RESPOND WITH THEIR BEST EFFORTS ON AN AS-AVAILABLE BASIS," SENATOR DOLE SAID.

AS FOR THE LONG-TERM, SENATOR DOLE WILL CONTINUE TO WORK WITH THE KANSAS DEPARTMENT OF TRANSPORTATION AND THE URBAN MASS TRANSIT ADMINISTRATION (UMTA) AT THE U.S. DEPARTMENT OF TRANSPORTATION IN AN EFFORT TO KEEP AND IMPROVE RURAL INTER-CITY BUS SERVICE IN KANSAS.

#