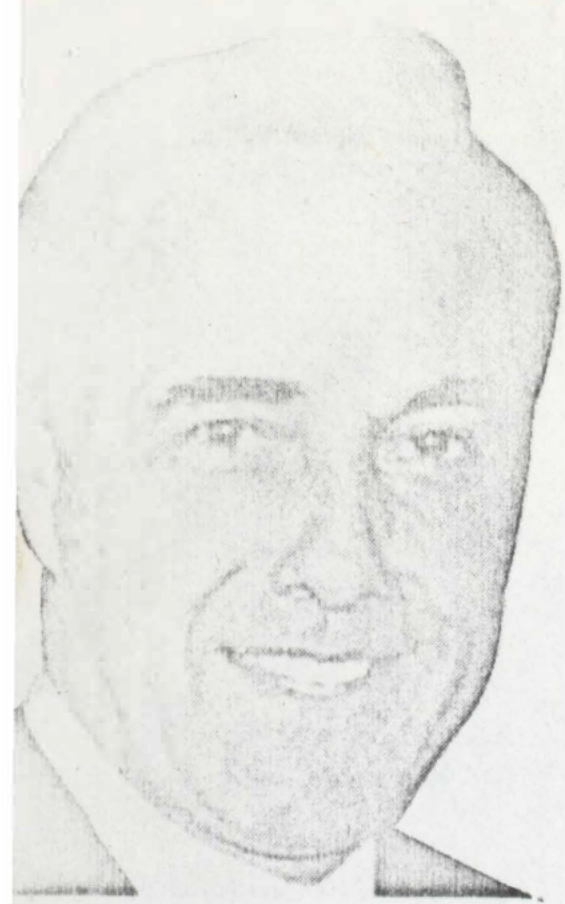


109



# NEWS from U.S. Senator Bob Dole

(R.—Kans.)

New Senate Office Building, Washington, D.C. 20510 (202) 22

Joe Reppert—Press S

FOR RELEASE MARCH 31, 1973

WASHINGTON, D.C., MAR. 31, 1973 -- In a letter to Secretary of Agriculture Earl Butz, Senator Bob Dole urged that farmers be extended the same option for wheat stored in commercial grain elevators as they now have for their grain in on-the-farm storage.

USDA has announced that farmers who have grain stored on the farm have an option to waive future storage payments after the loan maturity date thereby allowing them additional time in which to redeem their loans. This allows the grain farmer to sell the grain at possible higher market prices. If the farmer chooses not to sign the waiver, then storage payments to him will begin on the 61st day. However, the farmer will no longer be able to redeem the loan.

Dole's proposal would allow farmers who stored their grain in local elevators the same option to redeem the loan when the government is able to ship the grain to convenient elevator storage.

"It seems only fair," Dole said, " that since the government cannot ship the grain anyway, due to the freight car shortage, that our farmers be given additional time in which to redeem their loans for commercially stored grain as well as that stored on the farm."