

Pg. 269-
1995

Ford's Staff —

(Continued From Previous Page)
Special Welcomes
 Marquees at the theater, several motels and restaurants were lettered with special messages such as: "Welcome Home, Jerry and Bob!" When the crowd gathered, it became obvious that many had spent hours Thursday night or Friday morning lettering signs similar to those seen at the recent political conventions.

A number of campaign buttons, some dating back to Dole's first Congressional race in 1960, were dug out of drawers and dressers and pinned proudly on lapels and hats. A number of Dole stickers, also left from earlier campaigns, were offered to President Ford by well-wishers as the President made his way from the platform back to the official limousine.

The crowd was responsive, interested, and enthusiastic. President Ford's promises of no more grain embargoes and an increase in per-

sonal exemptions to "help the middle income group which has been short-changed over the past several years" brought cheers and applause.

Shade on the courthouse lawn, also part of the planning, eased the pleasant 87 degree noontime temperature Friday. Winds were from the south and 20 miles an hour.

The Russell High School band, which has chosen not to appear in vacation-time parades and events, was on hand with nearly two thirds of its strength. Entertaining the crowd in the hour or so preceding the arrival of the Presidential party, the band struck up "Hail to the Chief" with the arrival of the motorcade. Arrangements for the band and contacting players started after 10 p.m. Thursday.

A color guard, made up of members of the Veterans of Foreign Legion Post No. 6240 and the American Legion William Roe Post, No. 99 met the Presidential party as they arrived at the courthouse.

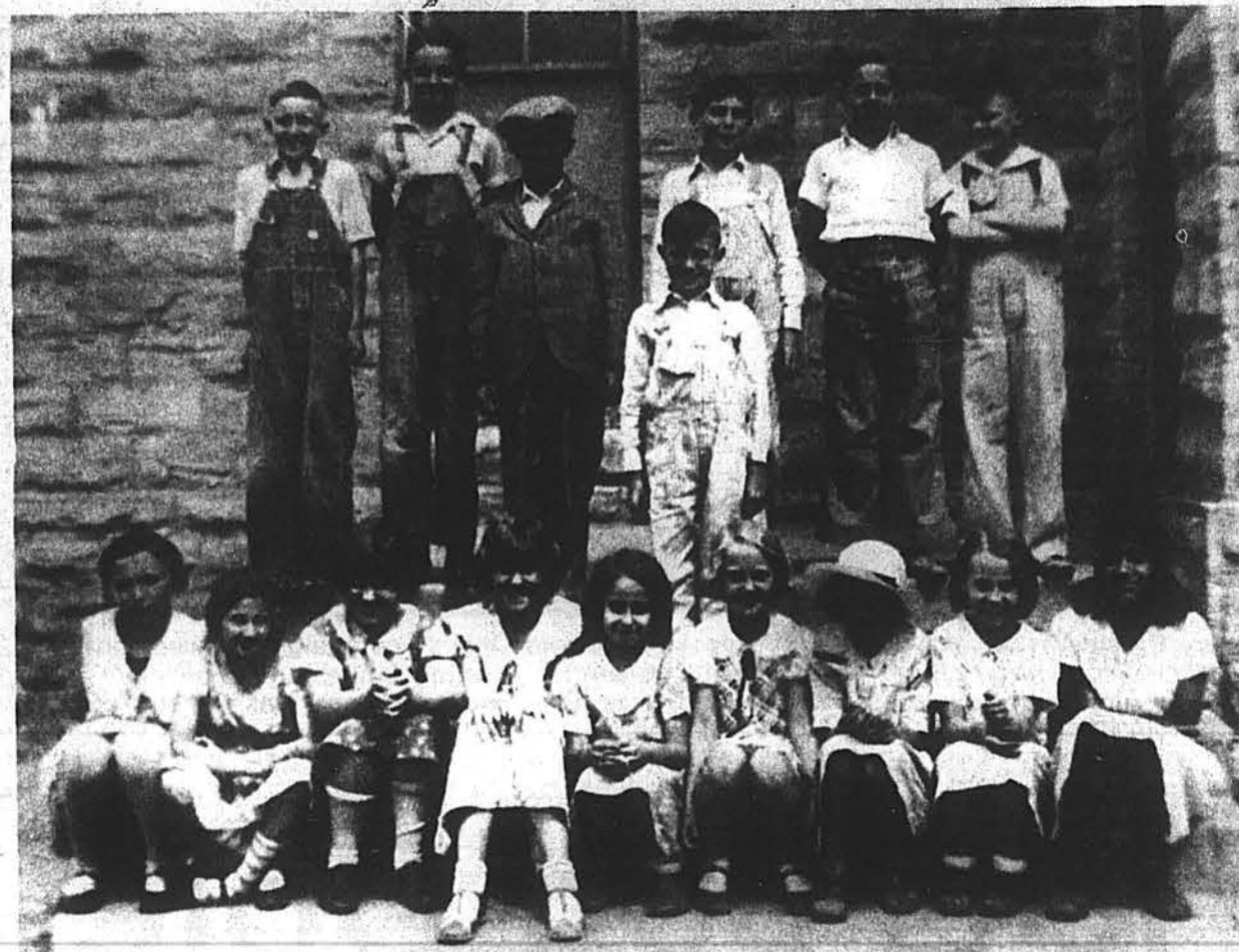


ROBIN DOLE'S BAPTISM — The Trinity United Methodist Church here was the scene in the early 1950s for the baptism of Robin Dole. Pictured, from left, are her parents, then County Attorney and Mrs. Robert J. Dole; Bina Dole (in background); Robin, being held by

her mother, Phyllis; Estelle Holden (Phyllis' mother), Concord, N.H.; Janie Townsley; and the minister, who is not recognized. Mrs. Townsley and Joyce Nash, Phyllis' sister, Franklin, Mass., were godmothers for Robin. Kenneth D. Dole, not pictured, was godfather. (Staff Photo)



THIS HISTORICAL MARKER was placed on the spot where President Gerald R. Ford and Sen. Robert J. Dole started their 1976 campaign for the presidency. It is located on the south side of the entrance sidewalk to the Russell County Courthouse. When Dole was picked by Ford to run with him, the senator had the president promise they would launch their campaign here. The Delta Mu Sorority, Russell, donated the marker. (Staff Photo)



A FOURTH GRADER at Simpson School, Bob Dole is the second from the right in the back row. As a youngster, he

parted his hair on the left side. Dole was born and reared in Russell and was graduated from Russell High School in 1941.



A SERIOUS Bob Dole at age 4.

Bob Dole Backs Glickman As Agriculture Secretary

WASHINGTON — Kansas Senator Bob Dole on March 29 made the following statement on the floor of the United States Senate in support of former Kansas Congressman Dan Glickman as secretary of agriculture. The Senate on March 30 approved Glickman's nomination by a vote of 94-0.

As the longest sitting member of the Senate Agriculture Committee, I welcome the administration's choice to appoint Dan Glickman as secretary of agriculture. I have worked with Dan Glickman for a number of years while he served as a congressman from the state of Kansas. I can attest to his commitment to agricultural issues, and I know the qualifications that he brings to the job.

Throughout his 18 years in Congress, he earned a reputation as a congressman who understands the issues, who listens, and who works with his colleagues to find common ground.

Congressman Pat Roberts, Senator Nancy Kassebaum and I introduced Dan to the Senate Agriculture Committee. I think that it is very significant that we three Republicans support his nomination. We may all share a Kansas background, but more importantly, we know from working with Dan that he is more interested in solving problems than scoring partisan points.

His experience speaks for itself. He has helped write the last four

farm bills, the last one as the chairman of the Subcommittee on Wheat, Soybeans and Feed Grains. We all know that the 1995 Farm Bill will be difficult to write. The Agriculture Committee's recent hearings have hinted at the tough choices that lie ahead. We will need an experienced, committed advocate at the Department of Agriculture.

Dan Glickman recognizes the weaknesses and strengths in our current policies, and the fiscal constraints that will play an important role in shaping our future policies. Above all, he realizes that the foundation of our nation is American agriculture.

The people of Kansas are proud of Dan Glickman. I am pleased to recommend him to be secretary of agriculture.

Dole Earns Acclaim

Senator Bob Dole's effectiveness as a consensus-builder and his commitment to deficit reduction and economic growth have earned him the admiration of Republicans, Independents and Democrats alike. On issue after issue, Dole is a statesman who has made his mark. A Des Moines Register survey concluded Dole is "easily (America's) most influential maker of farm policy." He has earned national acclaim for his leadership on behalf of the disadvantaged and Americans with disabilities, and for his mastery of foreign affairs.



THE FOUR HORSEMEN — Captains of their sports teams at Russell High School in 1941, known as The Four Horsemen, are, from left, front, Philip L. Ruppenthal, football; Robert Joseph Dole, basketball; and, in back, Lawrence Marsh, track; and Bernard Francis Smith, tennis.



BOB DOLE AND DAN GLICKMAN

Raymond McKinley Auctioneer
 Welcomes Home Senator Bob Dole
 Complete Auction Service
 Phone 483-2805
 18391 Shoreline Road
 Russell Kansas

Welcome Back to Russell Senator Bob Dole
 Dean's Auto Repair
 Dean and Ruth Keil, Owners and Employees
 Phone 483-5648
 Russell 460 South Front Kansas

Drake Engine Service Says . . .
 Best Wishes for a Successful Campaign

John Drake, Owner
 Phone 483-2029
 190 E. Witt Ave.
 Russell Kansas

Russell Welcomes Senator Bob Dole

Russell Veterinary Service
 G. John Thouvenelle D.V.M.
 24-Hour Emergency Service
 Phone 483-5822
 S. Highway 281 and Witt Avenue
 Russell Kansas