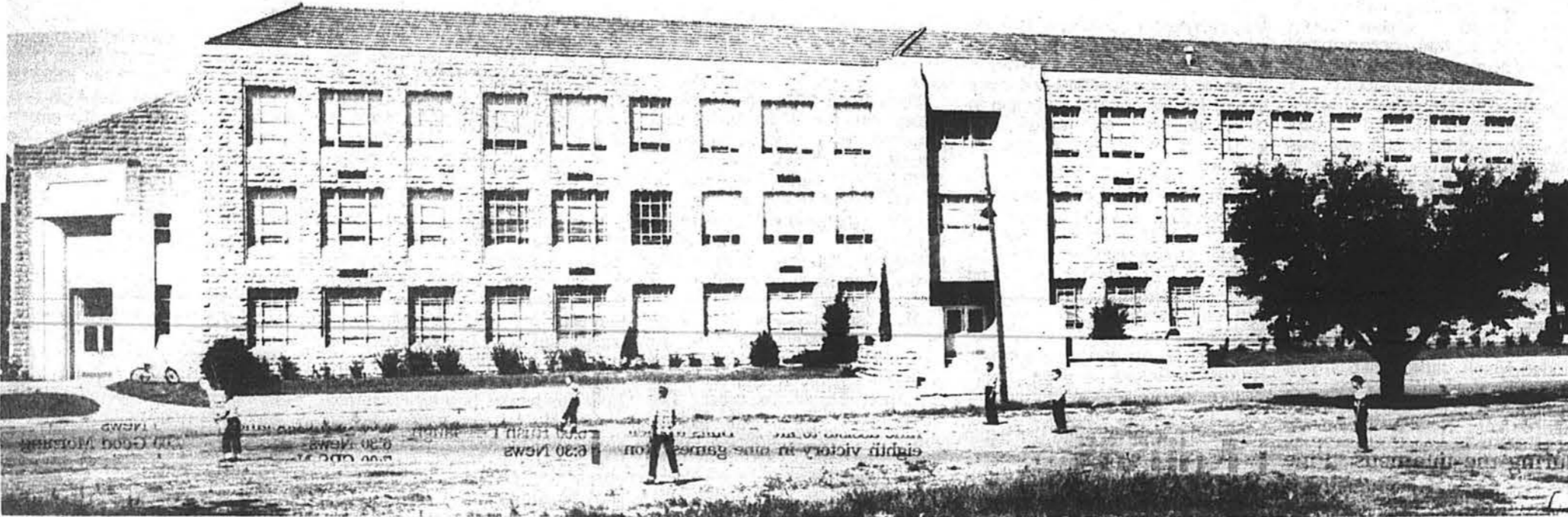




THE 1940 RUSSELL HIGH School Union Pacific League championship team shown here was the first team from Russell to ever win the title. Bob Dole, 78, and Adolph Reising, 68, now of Hays, were instrumental to the team winning the title. From left, the team members

are: Back row, Bud Smith, Philip Ruppenthal, A. L. Craven, O. D. Gregg, Doyle Palkonton, Adolph Reising, Elmer Leigan and John "Chuck" Bunker; middle row, Coach Dean Skarer, Tom Edwards, Arnie Reising, Bob Dole, Carl Rein, Everett Waudby, Walter "Junior" Mi-

chaelis and Coach George Baxter; and front row, Junior Reed, Dick Spencer, Elmer Voos, John Hogue, Billy Ingram, Ralph Resley and Lawrence Marsh.



RUSSELL HIGH SCHOOL, constructed in the late 1930s as a PWA project, is the high school from which Bob Dole graduated in 1941. The first class to graduate from the new school

building was in 1938. The building faces east in the 400 block of Elm Street. It has a gymnasium on the north end and an auditorium on the south end. Russell built a new high school

building on East State Street in 1962. This building is now Ruppenthal Middle School. A new million dollar addition was built onto the west side of the building about a year ago.

Dole Joins Republican Fray for '96

By JUDY KEEN
and JUDI HASSON
USA TODAY

The Republican campaign to unseat President Clinton is already at full tilt with the 1996 election still 82 weeks away.

The GOP frontrunner in most polls, Senator Bob Dole of Kansas, announced his candidacy Monday. "I am not afraid to lead, and I know the way," the Senate majority leader said.

Four years ago this week, not a single Democrat had formally announced.

The GOP primary campaign will be "a 50-yard dash," said political analyst Charles Cook.

Republicans face:

- The need to raise \$20 million for a national campaign.
- Early votes in big states.
- The GOP's winner-take-all primary rules.

The campaign kickoff is "way too early," said Wisconsin Governor Tommy Thompson, who may join the GOP field.

Also in the field: Former Tennessee governor Lamar Alexander, conservative commentator Pat Buchanan, Texas Senator Phil Gramm, radio commentator Alan Keyes and Pennsylvania Senator Arlen Specter.

California Representative Bob Dornan announced today, Indiana Senator Richard Lugar will get in on April 19. California Governor Pete Wilson says he's running; he'll announce by June 1.

Republicans expect a wild ride to their Aug. 10-16, 1996, convention in San Diego.

"I don't think there's anyone so adored that they're invulnerable," said former labor secretary Lynn Martin, who decided not to run. "Regrettably, Republicans have a unique ability to eat their young, so I don't count Clinton out yet."

Clinton spokesman Mike McCurry said Monday the president is "concentrating on . . . issues that are important to the future of the country."

Dole a Great Leader

"His title of Leader is not just a job title, it's a description of the man," President Reagan said of Senator Dole. President Bush called Senator Dole "a great Republican Leader, as great as any in the past." Bob Dole is one of only 15 Americans to serve as Senate majority leader, and his first stint in that position in the mid-1980s won praise nationwide. According to Congressional Quarterly, Senator Dole "proved a point that badly needed proving at the time: The Senate could be led."

Former Governor Avery Talks About Bob Dole

By WILLIAM H. AVERY
Former Kansas Governor

WAKEFIELD — It was late November, 1960. The State Republican Chairman, Cy Moyer, hosted a luncheon at the Jayhawk Hotel for the newly elected Republican members of the Kansas House of Representatives. The purpose was for the new members to become acquainted, to be advised on some of the procedural rules of the House, and to answer any questions that might be asked. As I recall there were approximately 15 new members in attendance.

The Legislature convened early in the following January and most of us only knew the members that attended the Chairman's Orientation Luncheon. As soon as that first day's business was concluded, I wandered over the floor, seeking the contemporaries met earlier.

I noted a new member seated near me that I had not remembered meeting. I introduced myself, and noted that I did not remember meeting him at the luncheon. Extending his left hand, he said, "I'm Bob Dole from Russell County. I had to miss the Chairman's Luncheon, as I am a senior in Washburn Law School and had a class at the time."

It was only then that I noted his handicapped right arm. As soon as an occasion was possible, I inquired and learned that he had been severely wounded in meritorious action in Italy, and had returned to Kansas and law school after an extended hospitalization in New Hampshire.

We didn't see a lot of Bob during that session. The Legislature only met every other year in the fifties, and usually adjourned by mid-April, it was said, so the "farmers could get home in time to plant oats."

As I remember, Dole missed only a few sessions which met in the afternoon, but was unable to attend any social events in the evenings, and had classes for most of the mornings, so had limited activity in committee work.

He was highly respected for car-

rying a dual role of law school and legislative sessions despite his handicap.

Toward the end of the session, he announced that he would not be returning to the Kansas Legislature, as he had decided to run for county attorney of Russell County, and as I recall, unopposed.

I didn't see Bob again until Kansas Day, January 1960. Wint Smith had represented the Sixth Kansas Congressional District since World War II and had announced he would not seek re-election. Bob had announced his candidacy for Congress and his Russell friends were serving "Dole pineapple juice" in the lobby of the Jayhawk Hotel for most of the day.

John F. Kennedy was the Democratic candidate in 1960 for president and four new Republicans were elected to Congress in the November election, which, of course, included Bob Dole. It was his first introduction on the national scene.

As the senior Republican congressman from Kansas, it was my responsibility to work for committee assignments for the new members. I was invited to meet with Republican leaders from the Sixth District and they impressed me with the need for Bob Dole to be assigned to the Committee on Agriculture. Since Kansas had always had a member of that committee, and retiring Wint Smith had served on it, I was successful in securing Bob's assignment to that committee, and he has had an increasing influential voice in agricultural legislation since that time.

Bob's first major political challenge came in 1962. Kansas lost an allocation of congressman, based on the 1960 census and the Legislature combined the Fifth and Sixth Districts and renamed it the First District. This placed Bob in the position to run against the then Democratic Fifth District Congressman, Floyd Breeding, from Rolla, in the 1964 election. He confided in me that it was difficult to be on the floor of the House and on

(Continued to Next Page)



BOB DOLE was a star player on the 1940 Russell High School basketball team. Members of the team, from left, are: Front row, Richard Spencer, Bob Dole, Gale Neff, Bernard Dumler and Bernard Smith, and back row, W. A. Michaelis, Bryce Blessing, Leon Mai, Glenn St. Aubyn, Gene Campbell and Coach Harold Elliott. Dole lettered in football, basketball and track each of his last three years in high school. He played guard in basketball and end in football. In track, he ran the 440 and the 880. He was captain of the basketball team during his senior year. At KU Dole played on Phog Allen's freshman basketball team and went out for track.



RUSSELL BRONCOS
THE Bronco is the Mascot
of Russell High School

★ ★ ★ BOB
DOLE
FOR PRESIDENT