

Pg. 47-1991

### Sen. Bob Dole—

(Continued From Previous Page)  
County Red Cross; member, county, state and American Bar Associations;

The BPOE, Masons, Isis Shrine Chamber of Commerce;

The American Legion, Veterans of Foreign Wars and Disabled American Veterans;

Selected "Outstanding Kansan to Overcome a Handicap" by Kansas Chapter of Disabled American Veterans; Member of Advisory Committee for National Affairs;

Masonic Service of the United States, National Board of Sponsors of the American Medical Center, Denver; member of the board for National Society of Autistic Children;

Member, Advisory Committee of the National Association for Retarded Children, Advisory Council on Scouting for the Handicapped;

Board of Directors, Rehabilitation International, U.S.A.; Kappa Sigma Man of the Year, 1970; Trustee, William Allen White Foundation at The University of Kansas; Kansas Easter Seal Society.

Washburn University granted him an honorary doctorate in 1969; and member of the Methodist Church.



BOB AND ELIZABETH DOLE and Arlen and Joan Specter are shown greeting people at a reception held here Dec. 27, 1980, to honor the two United States senators. Russell is the only city in the United States that claims two members of the Senate. Specter is the Republican senior senator

from Pennsylvania, Dole the senior Republican from Kansas and Senate Minority Leader. Specter's brother, Morton, and his wife, Joyce, of Russell, are on the right end of the reception line in the photo.

(Staff Photo)

### Bob Dole Had—

(Continued From Previous Page)  
of his bladder and bowels, as well as function in both lower extremities, and there was some improvement in the upper left extremity.

That fall, he could stand alone. His mother, Bina, to be near him, took an apartment near the hospital in Topeka.

In November, 1945, he was transferred to Percy Jones General Hospital in Battle Creek, Mich. Although away from family and home, his progress brought reason to hope again. In December, Dole, who had been in bed most of the time, awoke to

extreme pain in the left side of his chest, brought on by a blood clot in his left lung.

He spent weeks packed in ice to protect him from the side effects of dicumarol, an anti-clotting agent, the only medical tool available at the time. By January and February, his reacquired skills were slipping away.

By Feb. 14, 1946, the medication was not working, and penicillin was not hitting all the cocci that threatened his life.

An experimental drug, Streptomycin, was tried, with no guarantee it would work. It did prove successful.

On March 6, Dole was permitted to sit up in a chair for a few moments.

As time went on and Dole's therapy continued, he spent

hours working with other patients, bolstering morale and keeping them, and himself, busy.

It was at Percy Jones General Hospital that he met Phyllis Holden, an occupational therapist. She was later to become his first wife. The two met by chance at a social function. Contrary to often-repeated stories, Miss Holden was neither a nurse nor Dole's therapist.

Through another patient, Bill Eilert, who had been injured by a mortar blowback on Okinawa, Dole learned of Dr. Kelikian, an Armenian immigrant, who was liberated by Americans and had become a famed neurosurgeon. The surgeon's brother was killed in Italy and Kelikian agreed to operate on Dole for no fee.

"I do what I can for the country," the doctor said, "both out of gratitude and out of respect. Dole epitomized America to me. He had the faith to endure."

Before the operation, Dole returned to Russell and kept up his backyard therapy and streetside workouts.

The first operation on his shoulder in Chicago on June 3, 1947. Another was on Aug. 4, and the last was on Nov. 5. Part of the scapula was removed and muscles in Dole's neck were attached to his arm. The arm had been fused at the elbow and the paralysis of the nerves in his neck relieved.

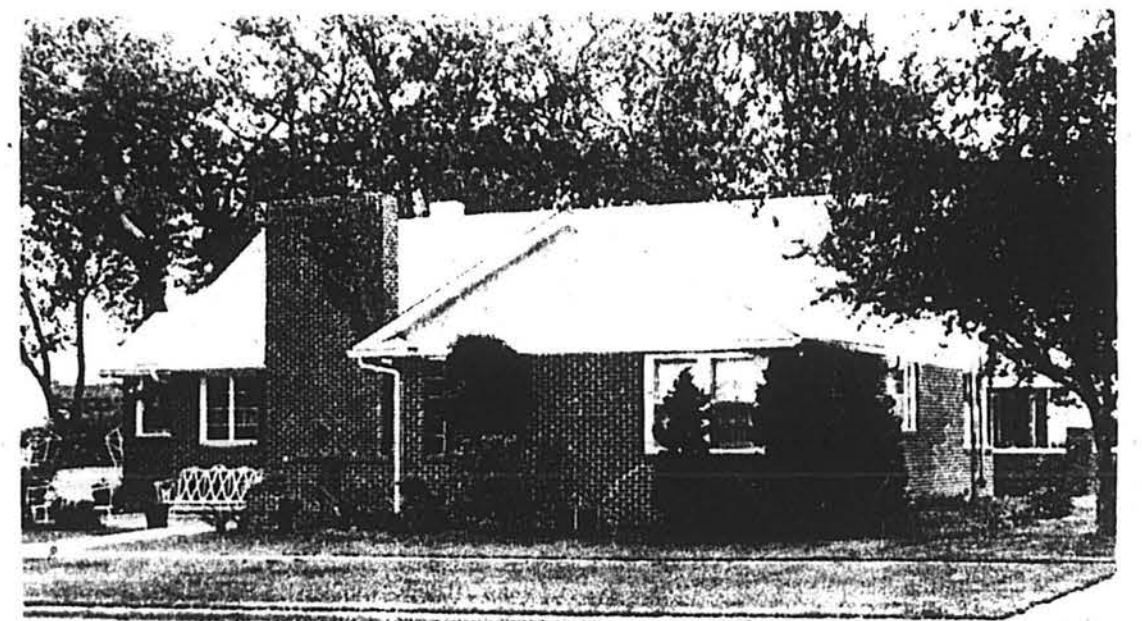
After the operations, Dole had 40-percent use of his right arm, with hopes of the usage increasing to as much as 70 percent.



EVEN AS A YOUNG lad growing up on the plains of Central/Western Kansas, Bob Dole liked to look good. This is a shot of Bob as a junior in high school.



BOB DOLE  
An Army Gunner  
At Camp Breckenridge, Ky.  
1944



DOLE HOME — This is the Dole home in Russell today, owned by Bob Dole and his daughter, Robin. Located at 1035 N. Maple St., it has been the Dole family home for many years. Originally it was owned by Dole's parents, Mr. and Mrs. Doran R. Dole. Before the house was re-

modeled several years ago, it faced onto Maple Street. Today it faces north onto 11th Street, but still bears the Maple Street address. Dole and his first wife earlier owned a house in the 1300 block of N. Lincoln Street, but it was sold years ago. (Staff Photo)