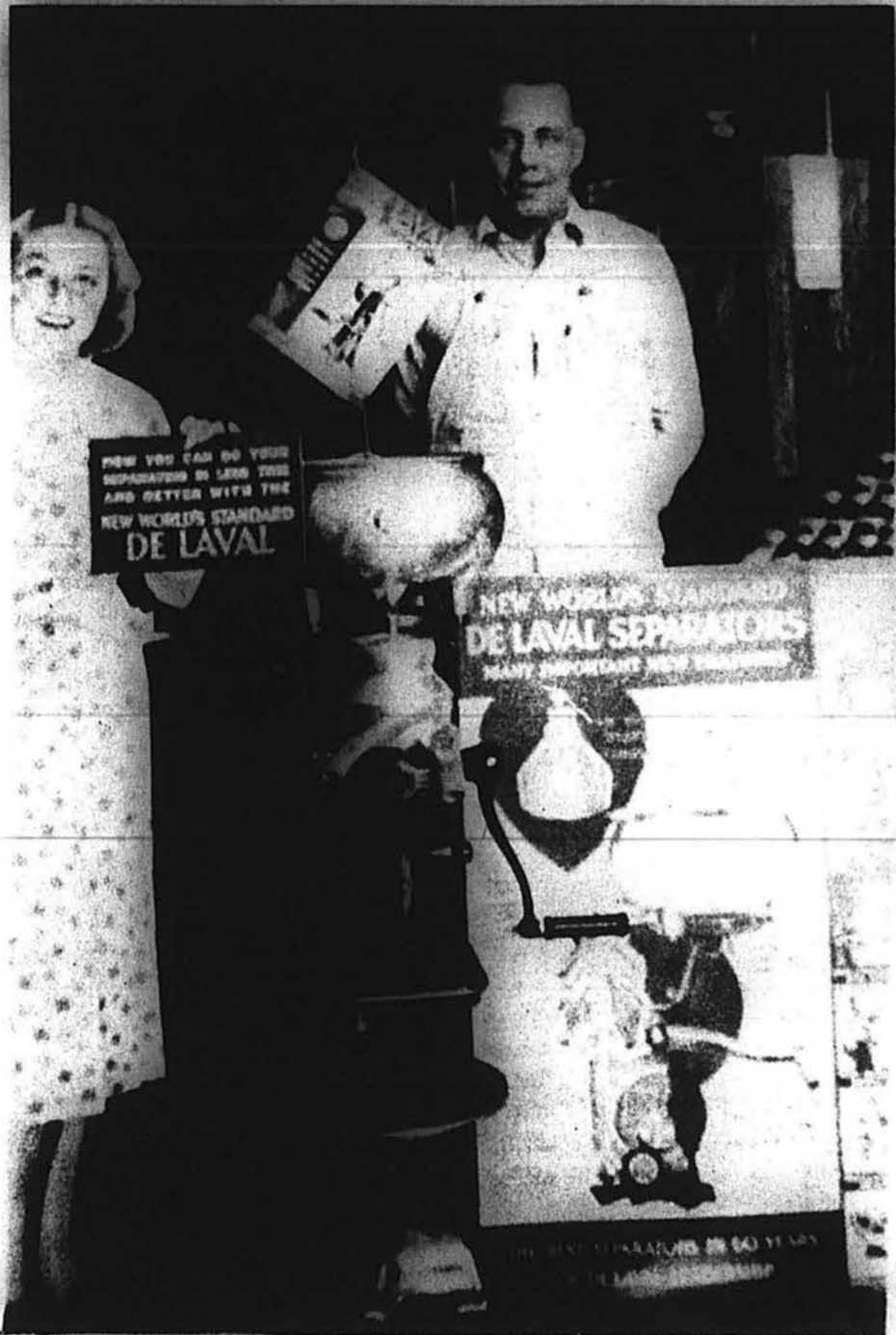


286. 1987



CREAM SEPARATORS — You never see one any more, but in the 1930s they were an important item to have on a farm, especially if you had milk cows and sold milk and cream. Doran R. Dole, Bob Dole's father, at Dole Creamery in Russell, was a dealer for De Laval separators, touted to be the New World's standard.



LT. ROBERT J. DOLE before he was injured rushing German troops in the Po Valley of Italy. Dole enlisted in the Army in 1942 while a pre-medical student at The University of Kansas and was called to service in 1943 halfway through his sophomore year. He was a freshman at KU when the Japanese attacked Pearl Harbor on Dec. 7, 1941. The attack launched the United States into World War II, on the side of the Allies, and against Japan and Hitler's Nazi Germany.

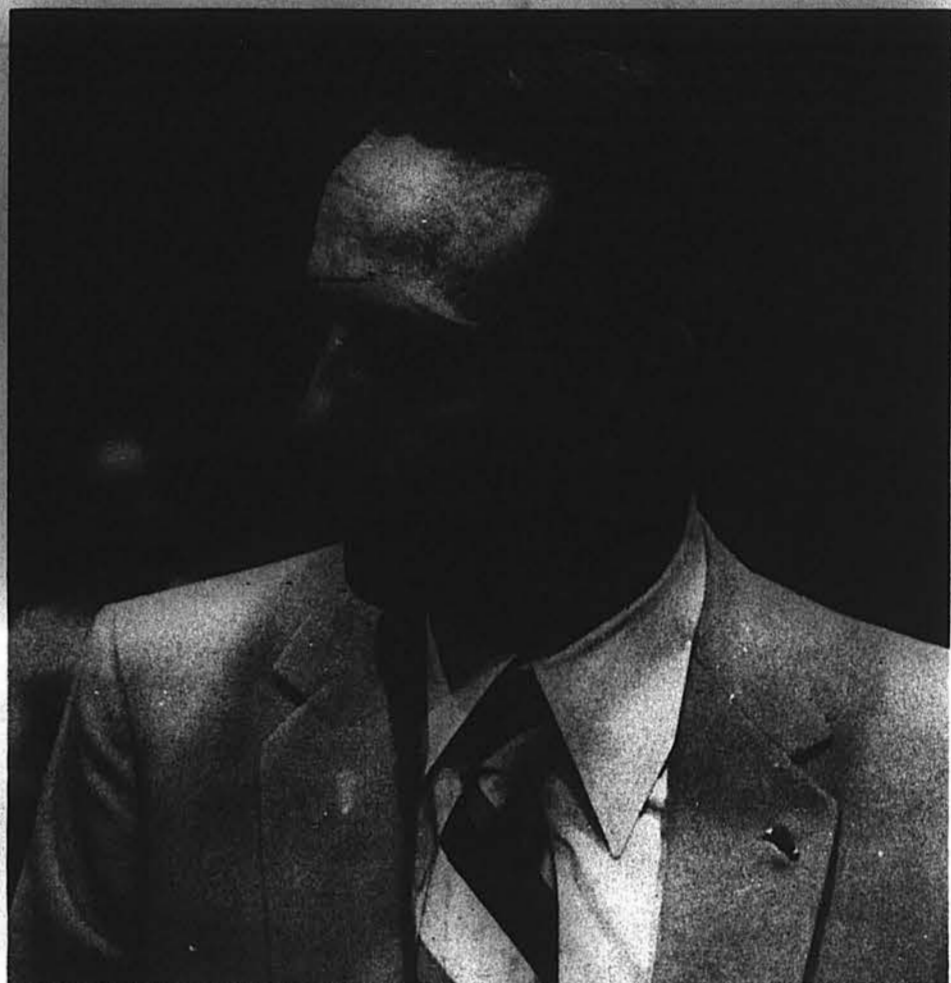


FRANK CARLSON, Concordia, was among Republican leaders of Kansas who spotted Bob Dole as a comer at an early age and helped guide his political career. Dole, having completed four terms as a congressman from Kansas's sprawling Western Kansas District, first ran for the Senate in 1968 when Carlson retired after 18 years as a Kansas senator. Dole was re-elected to the Senate in 1974, 1980 and 1986. Carlson is the only Kansan to have served as governor, congressman and United States senator.



ROBIN DOLE, Bob Dole's only child, helped her father in his first campaign for Congress in 1960. Robin today lives in Washington, D.C. Her mother, the former Phyllis Holden, lives in Topeka. (Staff Photo)

HOSPITAL PATIENT — Bob Dole is in a hospital bed recovering from the serious war wounds he received during World War II as he led an attack on a German stronghold in Italy. Dole was hospitalized for two and a half years and underwent several surgeries. After he was hit, all four limbs were paralyzed. After languishing for six months in a Veterans hospital at Topeka, Dole found his right shoulder still paralyzed and he had deep injuries to his spine, but worse, the muscles of both upper arms had been allowed to atrophy grotesquely. His right hand was crabbed, and his left was nearly useless. Active exercises were ordered. Doctors shook their heads. They did not expect Lt. Dole to live.



SUB-COMMITTEE HEARING— Senator Robert J. Dole, Russell, was at the Barton County Community College, Great Bend, conducting a sub-committee hearing about royalty owner's taxes on May 23, 1980. (Staff Photo)



BOB, KENNETH, Norma Jean and Gloria Dole enjoyed playing in the yard near their home here. The Dole family members were always close, and the brothers and sisters remain so today.



EXERCISE HELPED RECOVERY — Bob Dole conditioned his body with equipment rigged at the back door of the Dole home here to recover from injuries sustained in Italy during World War II. His arms had almost atrophied from laying in hospital beds. (Staff Photo)



AGRICULTURE SECRETARY John Block, on the extreme right, and Senator Robert J. Dole have just arrived at the Russell Municipal Airport to attend a farm meeting here. On hand to greet them are, from left: Richard L. Shields, Everett L. Dumler (with his back to the camera), and Dean C. Banker. (Staff Photo)