

150, 1979

RDN 5-13



WELCOME INTERRUPTION for Mayor Roger Williams, while assisting in setting up the downtown speech site near City Hall Sunday afternoon. The television interview is with WIBW, Topeka, crew of Kent Cornish, center, and cameraman Mike Jerrick. (Staff Photo)



OVER THERE is where the stage belongs, City Manager Jim Boyd points, to Mayor Roger Williams, left, and Pete Williams, right, Sunday afternoon as the street-stage began to take shape for Monday morning's announcement by Sen. Bob Dole. (Staff Photo)

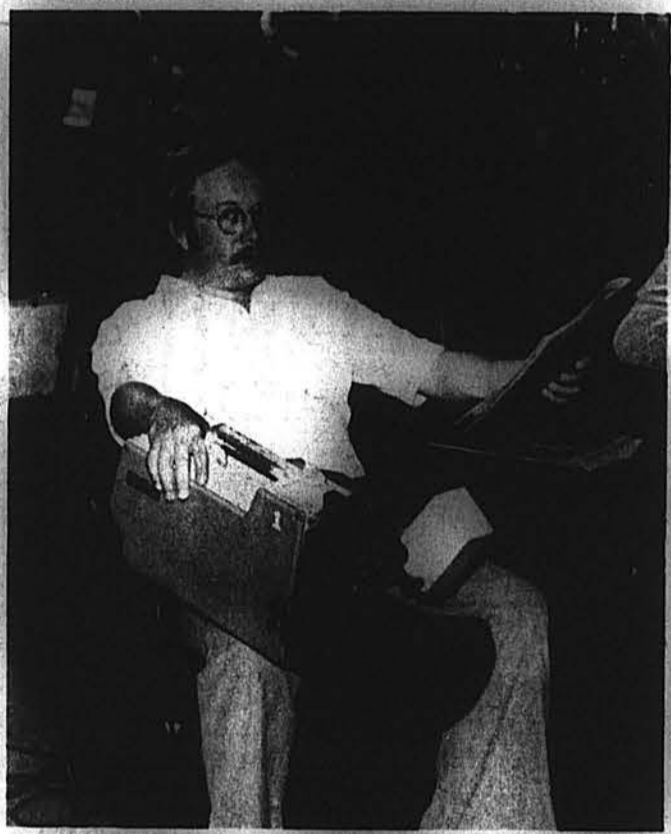


SUNDAY means church for Sen. Bob Dole, who was accompanied by his sister, Mrs. Tom (Norma Jean) Steele, Derby, Kan., to the service at the Trinity United Methodist Church. (Staff Photo)

On Your Mark—

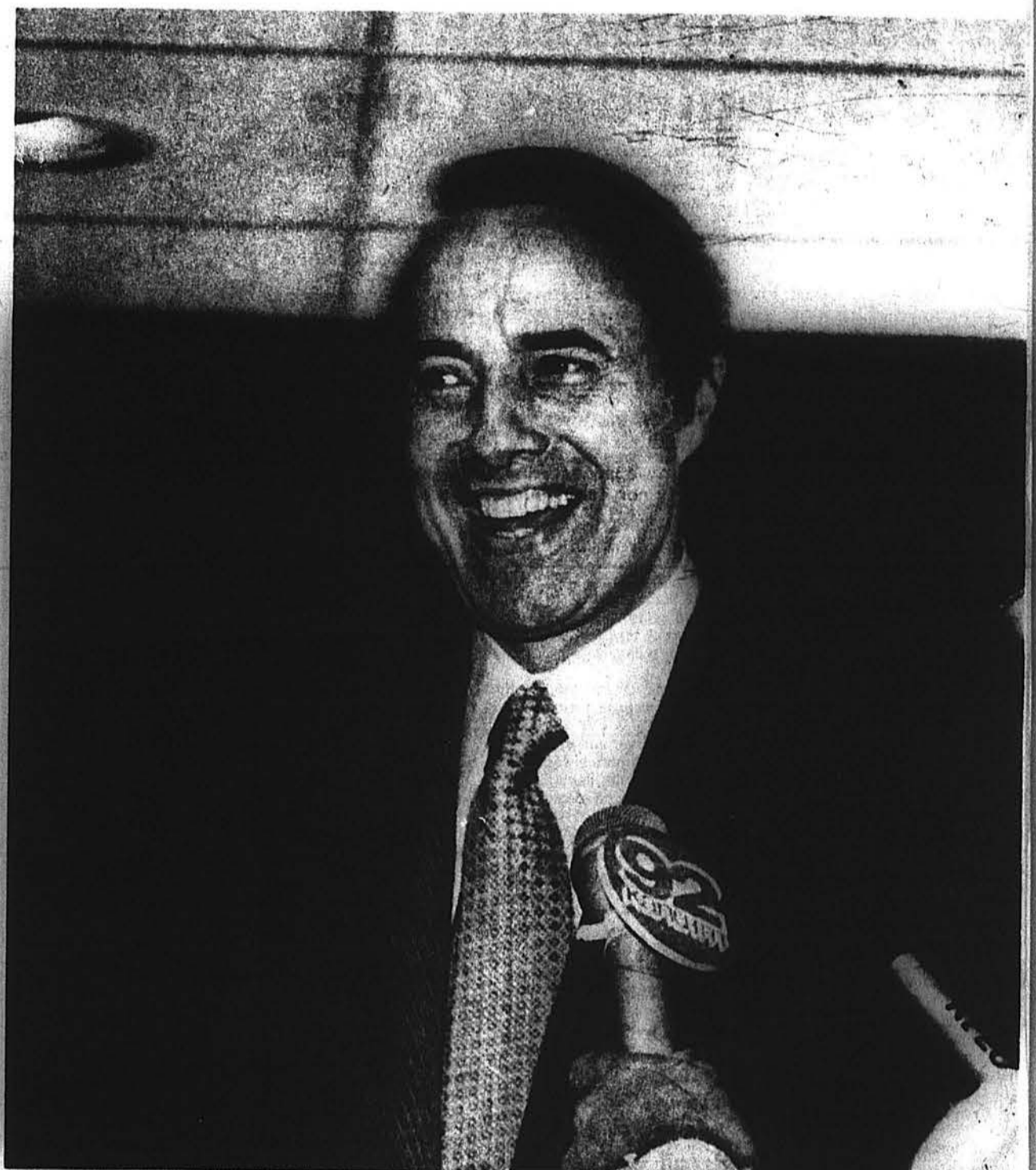
Get Set—

Go—



WAITING is part of the game for Jim Siebert, KTVH cameraman, Wichita, who relaxes from a vantage point in the Ramada Inn Rojo Room while waiting for the mid-evening Sunday arrival of Sen. and Mrs. Dole. (Staff Photo)

Photos
By
Harold "Prince" Elmquist
Russell T. Townsley
and
David A. Evans



POSITIVE CONFIDENCE is shown by Sen. Bob Dole as he fields questions during a brief meeting at a press party here Sunday night. Swapping quips with former teachers, coaches and friends, the candidate made it clear that his bid for the presidency is sincere and certainly not without risk. Taking the role of a political realist, Dole said that he is going after his party's nomination in 1980 with a full understanding of all that goes with it. (Staff Photo)



INTERVIEW—Mrs. Harold Dumler, left, whose first year of teaching in Russell schools had Bob Dole as a student, is shown talking at a press party Sunday night with Mike Taylor, KTVH, Channel 12, Hutchinson, newsmen. Many of Dole's classmates, coaches, teachers, relatives and friends talked with press people from many areas, including the major networks and Eastern newspapers. (Staff Photo)



PRESS CORPS turned out early Monday morning to welcome the Doles at a 7:30 a.m. visit to the AlaFern Nursing Home. The cameras and newsmen followed the Dole party through a series of pre-announcement stops in Russell. (Staff Photo)



DIFFERENT ROUTES—for similar best wishes in the AlaFern Nursing Home, Jewell and Elm streets, Monday morning as Bob Dole, left, talks with two residents as Elizabeth Dole, at right, talks with others at breakfast table near the window. (Staff Photo)