



THE PRESIDENT

Jan 3, 1990

Dear Bob -

Thanks for this. It
means a lot to me -
Have a great New
Year -

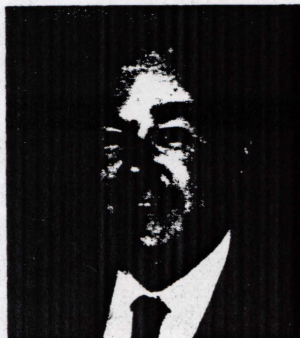
By

Highest Scorers in Presidential Support . . .

Highest Scorers — Support

Highest individual scorers in presidential support — those who voted most often for Bush's position in 1989:

Senate



David L. Boren



Bob Dole

Democrats

Boren, Okla.	77%
Robb, Va.	73
Dixon, Ill.	72
Nunn, Ga.	72
Breaux, La.	71
Heflin, Ala.	71

Republicans

Cochran, Miss.	94%
Dole, Kan.	94
Roth, Del.	94
Lugar, Ind.	93
McCain, Ariz.	91

House



G. V. "Sonny" Montgomery



Robert H. Michel

Democrats

Montgomery, Miss.	78%
Huckaby, La.	74
Byron, Md.	71
Parker, Miss.	71
Stenholm, Texas	71
Hutto, Fla.	70
Hall, Texas	69
Ray, Ga.	69

Republicans

Michel, Ill.	88%
Gingrich, Ga.	87
Rhodes, Ariz.	86
Skeen, N.M.	86
Combest, Texas	85
McCrery, La.	85
Wylie, Ohio	83

Average Scores

Composite presidential support scores for Democrats and Republicans for 1989 and 1988:

	1989		1988	
	Dem.	Rep.	Dem.	Rep.
Support				
Senate	55%	82%	47%	68%
House	36	69	25	57
Opposition				
Senate	43%	16%	45%	25%
House	58	27	66	36

Regional Averages

Support

Regional presidential support scores for 1989. Scores for 1988 are in parentheses:

	East	West	South	Midwest
Democrats				
Senate	50% (41)	55% (46)	65% (54)	51% (47)
House	32 (22)	30 (21)	47 (31)	32 (23)
Republicans				
Senate	75% (57)	83% (68)	85% (76)	83% (72)
House	58 (47)	72 (63)	75 (61)	71 (58)

Opposition

Regional presidential opposition scores for 1989. Scores for 1988 are in parentheses:

	East	West	South	Midwest
Democrats				
Senate	49% (48)	42% (47)	34% (39)	48% (47)
House	61 (67)	65 (71)	49 (60)	64 (71)
Republicans				
Senate	23% (42)	14% (27)	14% (26)	15% (30)
House	36 (45)	25 (29)	22 (29)	26 (34)

(CQ defines regions of the United States as follows: **East:** Conn., Del., Maine, Md., Mass., N.H., N.J., N.Y., Pa., R.I., Vt., W.Va. **West:** Alaska, Ariz., Calif., Colo., Hawaii, Idaho, Mont., Nev., N.M., Ore., Utah, Wash., Wyo. **South:** Ala., Ark., Fla., Ga., Ky., La., Miss., N.C., Okla., S.C., Tenn., Texas, Va. **Midwest:** Ill., Ind., Iowa, Kan., Mich., Minn., Mo., Neb., N.D., Ohio, S.D., Wis.)