

December 2, 1993

TO: Senator Dole
FROM: Mike Torrey
SUBJECT: St. Louis ag meeting

Those attending the St. Louis ag meeting have been told to talk about whatever is on their minds. Regarding agriculture, you may want to point out that many decisions regarding agriculture will be made in 1994 i.e. the Clean Water Act, the Endangered Species Act, and wetlands reform. Considering the make up of the group, the following topics may come up.

LEVEES...Considering most of these folks had some association with the 93 floods, this may come up. Basically there is concern with the repair of levees which were built by the Corp but not in the federal program since the levees were not maintained. Bond has pushed hard to require the Corp of Engineers to assist in the repair of these levees. The Bond bill would cap cost at \$100 million. Legislation passed the House with a \$50 million cap. Baucus sided with the Corp in opposing this legislation and put a hold on it in the Senate. FYI, this legislation would assist 400 levees in Missouri and 100 levees in Kansas. The problem this creates is that when spring showers come, there may be additional flooding without these levees repaired. Spears is meeting with the Corp on Friday to discuss this situation.

The Bond bill is also strongly opposed by the Fish and Wildlife Service. They are waiting on a White House task force report due in February which is looking at alternatives to levee repair. Essentially, Fish and Wildlife believes the flood plain should be opened up and no levees rebuilt. Instead, they want to restore wetlands. However, they reportedly have not yet put up road blocks to levee repair in Missouri. I understand the environmental groups will be in town early next year pushing for the federal government to buy up land from property owners who are upstream from flood plains hoping to keep this land open.

PRIVATE PROPERTY RIGHTS/ENDANGERED SPECIES...A separate memo is attached. This would be a good group with which to push private property rights legislation.

GATT...They may ask you about the chances of getting a GATT agreement and if it will stand a chance in Congress. As you know, December 15 is the deadline for an agreement. You have sent letters saying hold strong on Blair House which will be of interest to the soybean folks. As of Thursday, it was rumored that there was a deal on GATT between the E.C. and the U.S. Details are sketchy but we understand that the E.C. wants to make cuts in export subsidy programs at a slower rate and they have agreed to increase their market access. I understand Kantor will meet with the President on this and then fly to Geneva on Monday.

ETHANOL...December 15 is the deadline for EPA to decide whether or not ethanol will be included in the reformulated gasoline

program. You have sent letters to the White House asking ethanol be included. The Secretary of Agriculture is supportive but EPA is resisting. There should be attached information regarding this.

FARM BILL...Discussion of the 95 Farm Bill will start in the fall of 1994. Much of the debate will be influenced significantly by the environmental groups which will ask for additional environmental mandates on farmers. There will also be a strong faction which will want to do away with farm programs altogether. Agriculture will have fewer federal dollars to work with for the farm bill which will make any kind of program difficult. Major issues will include what to do with CRP ground, means testing, and increasing flexibility so producers can grow alternative crops. If we get a GATT agreement, this may require a major restructuring of farm programs as well.

December 1, 1993

TO: Senator Dole

FROM: Mike Torrey

SUBJECT: Private Property Rights/Endangered Species Act

PRIVATE PROPERTY

--S.B.177 would codify an Executive Order issued by President Reagan. Essentially the bill contains only three basic points: First, when issuing regulations, agencies should review them to determine whether it would result in a taking of private property; second, strive to reduce takings; and third, have the Attorney General certify that the first and second points have been undertaken.

--S.B. 177 has 25 co-sponsors--2 Democrats and 23 Republicans.

--Even though the rights of property owners are protected from the federal government under the 5th amendment and from state and local governments under the 14th amendment, billions of dollars in claims are filed each year against the federal government by landowners who believe their property has been taken by the government without just compensation.

--While the courts have recognized these takings are subject to compensation, it is unfortunate that citizens, at the expense of vast amounts of money and time, have had to go to court to prove their case.

--During debate in the House on the National Biological Survey, a vote was taken which prevented federal employees from going on private property without written permission to collect data for the survey. The vote passed overwhelmingly (309-115).

--Legislation similar to yours was passed several times by the Senate during the last Congress. However, with a change in the make up of the Senate, a grass roots lobbying effort will be necessary to pass this legislation in 1994.

ENDANGERED SPECIES ACT

--There may be action on the ESA in 1993. There are two bills receiving attention in the Senate-- S.B. 921 (Baucus) and S.B. 1521 (Shelby/Gorton). The latter is supported by many of the ag groups. S.B. 1521 considers the economic impacts on communities and strengthens the role of science in determining the listing of a species as endangered. Whereas S.B.921 does not address the issue of private property rights and it extends immediate protection to 3700 candidate species.

FROM: RP WASHINGTON, DC

TO: 2246721

DEC 2, 1993

3:36PM

P.03/03

**Sen. Dole Agribusiness Meeting
December 3, 1993 - 4:00-5:00 p.m.
Radisson Hotel (Airport), St. Louis**

Paul H. Hatfield - meeting moderator/chairman.
President & CEO
Protein Technologies International

Dietrich, Larry
President (farmer, South Dakota)
Roberds, Dale
Board of Directors (farmer, Pittsburg, Kansas)
American Soybean Association

Hobgood, Walter
Vice President Animal Science Division
Monsanto Agriculture Group

Justis, Paul
Department Manager
Doane Agricultural Services Co.

Larson, Morris
Executive Vice President & CEO
Merchant Exchange of St. Louis

McMillan, Ed
Chairman
Purina Mills Inc.

McWard, Dick
VP, Industry & Corporate Affairs
Bunge

Ottaway, David
Executive Vice President & CEO
North American Equipment Dealer Association

Pellet, John
Missouri grain farmer.

Rus, Larry
Executive Director
Campen, John
Director, Market Development
National Corn Growers Association

Russell, Jim
President
Missouri Agriculture Industries (MO-AG)

Stolte, Earl
Missouri grain farmer.

12-02-1993 11:08AM FROM

TO 85117-20222583902312 P.02

Health Care With An IRA Plan

By Jim Talent

A great deal is at stake in the current health-care debate. America has the best quality health-care system in the world. We must be careful to preserve that quality, while cutting spending and reaching out to Americans who have no secure, regular access to health care.

President Bill Clinton's proposal is government-run health care. That idea has produced poorer quality and rationing of care wherever it has been tried. Fortunately, there is an alternative now under discussion in Congress that shows real promise to reduce spending and protect the quality of our care. This solution, known as "Health Care IRAs," addresses the true cause of rising health-care spending — that there are few incentives for people to control their spending on health care.

Today, health care is almost always paid for by a third party, usually by group health insurance. As a result, the average person has no direct financial responsibility for the health care he or she is consuming and little incentive to control either the amount or cost of that health care.

This causes health-care spending to increase far more than it should. To understand why, suppose we had a system where most people bought food like they now buy health care — through employer-provided insurance. Under such a system, once a family had paid a deductible of a few hundred dollars, their "grocery insurance" would pay for their food purchases the rest of the year. Imagine what would happen to spending on food in America. How many people would buy less expensive cuts of beef, clip coupons or comparison-shop once they no longer pocketed the savings?

The Health Care IRA plan would reform this system by placing people in charge of their own health-care spending decisions. Here is how it would operate for the average employee spending \$5,000 a year for an employee's family health care. Congress would allow employers to pay this \$5,000 directly to the employee, provided that the employee put the money into a tax-deductible Health Care IRA. The employee would be required to buy at least catastrophic health insurance, but otherwise would be free to buy whatever benefits he or she

chose. Most people would buy high deductible policies, say a \$3,000 deductible, which would cost approximately \$1,500 to \$2,000, and would then use what was left in the Health Care IRA to pay the deductible. However, if the employee did not spend everything in the IRA on health care, at the end of the year he or she could keep whatever funds were left as income.

Health Care IRAs would clearly make the average person better off. The cost of insurance would still be tax-exempt and would be subsidized by the employer to the same extent as it is now, but with the IRA plan, the person could choose his or her insurance and would have a good chance to realize extra income at the end of the year. The whole system would be better off because people would be spending their own money and so would buy health care the same way they now buy any other service — when they thought they needed it, and not otherwise.

Current laws don't allow establishment of tax deductible health-care IRAs; however, in places where they have been tried with after-tax dollars, they have succeeded in cutting health-care costs by up to 30 percent. The widespread use of Health Care IRAs would by itself solve the problem of the huge increase in

health-care spending, without new government bureaucracies and by increasing rather than limiting consumer choice.

Health Care IRAs would also be a device for extending health-care coverage to the working poor. For those who are working but earn below a certain income, the government could provide vouchers or tax credits that would be used by individuals to set up their own Health Care IRAs.

Health Care IRAs should be part of a package of reforms. We also need to expand coverage to the unemployed and provide medical malpractice liability reform to lower costs and remove the incentive that physicians and hospitals currently have to overprescribe tests and treatments. And, insurance companies should not be allowed to cancel insurance when people get sick or refuse to insure people because they have a pre-existing condition.

The need for health-care reform is great. We can slow spending, extend care and preserve quality; the answer is putting people, not the federal government, in charge of health care.

Jim Talent, Chesterfield Republican, represents Missouri's 2nd Congressional District.



Dick Wright/Providence Journal-Bulletin

NAFTA 1/4

As you have heard, I recently decided that I could not support the NAFTA agreement. Since that represented a change in the direction I had intended to take, and since I know you support the treaty, I wanted to write with a more detailed explanation of my decision than I could give through the media.

My views are generally those of a free trader, and since NAFTA lowers tariffs between the United States and Mexico, I was originally very receptive to it. In fact, I spent the first nine months of this year defending NAFTA and the whole concept of free trade with Mexico. I did this in correspondence with constituents, making appearances before large groups of people, and in numerous meetings with representatives from labor unions and Ross Perot's organization. I believed at the time, and still believe, that free trade between the United States and Mexico would benefit both countries, and certainly that there was no danger of America losing its industrial base to Mexico if tariffs were lowered. Out of deference to those of my constituents who believed otherwise, I personally read the Ross Perot/Pat Choate book on NAFTA; I found its economic arguments and predictions overstated and often plainly mistaken, and I have not hesitated to say so.

The opponents of NAFTA also raised concerns about the extent to which the agreement encroached upon the sovereignty of the federal and state government. With regard to the main body of NAFTA, I tended to discount those concerns while keeping an open mind. However, in the fall I read a number of articles from respected sources expressing serious doubts about NAFTA because of the supplemental or side agreements which the Clinton administration had negotiated and announced in September. I decided to read the side agreements myself. I did so several weeks ago and was astonished at the extent to which they give control over American environmental and labor law to an international bureaucracy.

The side agreements create a "Council," which is composed of the environmental Ministers of the three countries, a "Secretariat" which is an investigative and monitoring agency and numerous other new international bodies. The purpose of the Council and secretariat is to investigate and decide complaints that any of the three countries is failing to enforce its own environmental law. Put another way, while the side agreements do not on their face purport to require any government to change its substantive law, they do plainly give the Council and Secretariat very substantial power to supervise how those laws are enforced.

This is of enormous importance because most environmental statutes set up very high standards but give to administrative

12-02-1993 11:37AM FROM

TO 85117-20222583902312 P.03

NAFTA 2/4

agencies considerable discretion in enforcing those standards. The power to control how those agencies exercise their discretion is the power to control American environmental law; and the ~~all the side agreements would give that power to an international~~ agency, controlled by our competitors, and with a mandate to require always more, never less, regulation.

During private discussions with NAFTA proponents I was asked to give hypothetical examples of how I envisioned the side agreements would work in practice. Here are two such examples:

1. There are a number of Superfund sites around the country in which toxic waste is eliminated by incineration. Suppose EPA were to decide to settle Superfund litigation by agreeing to consent orders which allowed other than complete incineration of the toxic waste. In other words, incineration of waste beyond the point where it is measurable is a very expensive process. Suppose EPA decided not to require it, but instead concluded that it would decide in each case what level of incineration was necessary to protect the surrounding public and would only require that level as a condition of agreement to settlement.

Now suppose further that the Natural Resources Defense Council got involved in a case involving one of those Superfund sites. After the case was settled against the wishes of the NRDC, the NRDC could make a "submission" to the Secretariat pursuant to Article 14 of the NAFTA side agreements. That submission would allege that the United States was not effectively enforcing its environmental laws. Pursuant to Article 14 (2), the Secretariat would demand a response from the U.S., and pursuant to Article 15, the Secretariat could, with the permission of the Council, develop a factual record in the course of investigating the submission. On request of the Secretariat, the U.S. would be required to make available any information in its possession, including enforcement or background data relating to the decisions by EPA. Article 21 (1).

After the Secretariat has developed its factual record and made its recommendations, or independent of any such record, either Mexico or Canada could request "consultations" with the U.S. alleging that the EPA's Superfund actions constituted a "persistent pattern of failure to effectively enforce American environmental law" Article 22 (1). Those consultations would lead to negotiations, and if the disagreement was not resolved, eventually an arbitration panel could decide that EPA, by not insisting on the strictest possible enforcement, had failed to effectively enforce American environmental law. The panel could establish and require the U.S. to follow an "action plan for remedying the failure to enforce the law." In other words, the arbitration panel could order EPA to reverse its policy and require in every case the most expensive incineration which was technologically possible, regardless of whether EPA believed that was necessary to protect the public safety.

12-02-1993 11:37AM FROM

TO 85117-20222583902312 P.04

NAPTA 3/4

2. The Fish and Wildlife Service puts the spotted owl on the endangered species list. As a result of this, it must decide whether to permit logging on federal lands which are in the habitat of the spotted owl. The federal government decides to permit a reasonable degree of logging notwithstanding the possible effect on the spotted owl, on the grounds that the effect otherwise would be to shut down the timber industry and substantially raise timber prices in the U.S.

Since this decision makes American timber more competitive on the world market, Canada alleges that it constitutes a "persistent pattern of failure" to enforce American environmental law "relating to a situation involving...a sector that produces goods...that compete in the territory of the party complained against." Canada seeks consultations with the U.S.; after those consultations, Canada and Mexico insist on the establishment of an arbitration panel to decide whether the U.S. has violated the NAFTA side agreement. Under pressure from environmental groups and in an effort to prevent the issuance of an order requiring it to shut down logging altogether, the U.S. agrees to a settlement according to which logging on federal lands is still permitted, but is very severely restricted.

It is important to emphasize that in devising these hypotheticals I did not engage in strained or tortured interpretations of the side agreements. The side agreements plainly give the Council and Secretariat both the power and the mandate to act as I have suggested.

Moreover, the hypotheticals by no means exhaust the possibilities for using the side agreements to interfere with the domestic policy of the U.S. I only studied the side agreements for several hours, and I am not an expert on environmental law. There is no telling what sophisticated attorneys will come up with once they have had a chance to take the side agreements apart.

I did not hide my concerns about the side agreements from anyone. I discussed them with proponents of NAFTA and attorneys who had represented business when the side agreements were negotiated. None of these people denied the main thrust of my objections. They were all uncomfortable with the Council and Secretariat but felt these bodies could be kept under control. I do not have the space to go through all the points we discussed, but I want to state briefly why I did not accept their two main arguments: that Canada and Mexico would not file complaints against us, and that in any event our government could simply ignore adverse decisions by NAFTA arbitration panels.

I simply do not credit the claim that our competitors would not file complaints against us. Why shouldn't they? Remember that the investigative mechanism of the Secretariat can be set in motion by a nongovernmental organization like the Sierra Club. Does anyone suppose that groups like the Sierra Club would

12-02-1993 11:52AM FROM

TO 85117-20222583902312

P.02

NAFTA 4/4

exercise restraint in filing such complaints? Just the investigation by the Secretariat could be used as a means of putting political pressure on American environmental agencies. Moreover, each party would have a strong economic interest in trying to raise the cost of other parties' goods by increasing the cost of environmental compliance. Finally, the whole point of the side agreements is to provide a mechanism for requiring that Mexico enforce its environmental laws. Is the Administration denying that it will file complaints against Mexico in order to make enforcement more strict in that country? And can we expect that the Mexicans will sit by while we use NAFTA to interfere with their environmental enforcement without filing any complaints in return?

Nor was I persuaded by the argument that the United States could simply ignore any adverse arbitration decisions. I think this position is very naive about political reality. Take the first hypothetical set forth above. What administration will stonewall an international body which finds, after months of investigation and hype, that the United States is systematically failing to protect its people from toxic waste? It is much more likely that even a conservative administration -- much less the Clinton administration -- will settle these cases by increasing regulations rather than face negative publicity and the possibility of trade sanctions for disobeying an arbitration decision.

In short, I believe that the Council and Secretariat will be every bit as intrusive as the plain language of the side agreements suggest. In this conclusion I have history on my side. Many regulatory agencies have been created under conditions which supposedly limited their reach and scope. Yet the burden of government at all levels costs the American economy more than one trillion dollars, and millions of new jobs, every year.

For people who believe in free markets, the debate about NAFTA comes down to this: do the benefits of lowering tariffs outweigh the costs of the side agreements? The net benefits of NAFTA are small in the short term, and in the long term depend on NAFTA being the first step toward expanding free trade throughout the Western Hemisphere. But NAFTA is no longer a precedent for free trade; it is a precedent for holding free trade hostage to the creation not just of new regulations, but of a whole new level of regulatory power. That is not an outcome which I can in good conscience support.

I appreciate your contacting me on this issue. I am truly sorry I cannot vote as you request.

ATTENDEES AT MEETING WITH ST. LOUIS CEOS AND REP. TALENT

John McDonell, McDonnell Douglas
Dick Mahoney, Monsanto
Steve Brauer, Hunter Engineering (automotive test equip)
Bob Baer, United Van Lines
Richard Liddy, General American Insurance

50-50 chance of attending
B.A. Bridgewater, Brown Shoe
Cliff Eason, Southwestern Bell (Reg. Chairman, not CEO)
Tom Jacobsen, Mercantile Bank
Chuck Knight, Emerson Electric
Craig Schnuck, Schnuck Supermarkets

DECEMBER 1, 1993

The following is background information for your trip to Missouri:

John Ashcroft, former Governor

John Ashcroft was the first Republican governor in Missouri history to serve consecutive terms. He was re-elected to a second term with 64% of the vote, the largest victory margin of any Missouri governor since the Civil War. In addition to his eight years as governor, Ashcroft served as Missouri Attorney General and two years as State Auditor. In his last three elections Ashcroft has received an average of nearly 62% of the vote.

With Governor Ashcroft in the race, Republicans might be tempted to treat the race lightly. However this could potentially be dangerous. In an October '93 survey, Ashcroft remains popular, but loses narrowly in a hypothetical ballot (46% vs. 43%) with current Governor Mel Carnahan -- an unlikely opponent. Ashcroft leads all likely Democrat challengers by wide margins and wins over half the vote against any of them. Among the Democrats, Rothman-Serot (who ran and lost against Senator Kit Bond in 1992) is fairly well known but considerably unpopular; the others are much less known.

Ashcroft will report approximately \$500,000 cash-on-hand at the end of the reporting period, and has been focused on fundraising for the past several months. The latest event was a salute to John Danforth in St. Louis which raised over \$75,000.

The Democrat to watch is Congressman Alan Wheat. Representing Missouri's 5th Congressional District -- which includes most of Kansas City, Grandview, and most of Independence -- Wheat was elected in 1982 and has done very well for a black representing a white majority district. Even after it was revealed that he bounced 86 checks in the House Bank, he still got 59 % of the vote in 1992. Wheat has been extremely effective at downplaying his solid liberal voting record in the House, while emphasizing strong constituent service and "bringing home the bacon" for projects and industry in his district. His activism in the national African American community will allow him to raise money outside of Missouri, and he has proven he can raise money from business and industry. He is expected

12-02-93 05:56 PM FROM

P008

to make a formal announcement in January and will convert nearly \$400,000 from his House campaign committee to his Senate account.

Democrat Geri Rothman-Serot, 1992 Senate candidate, had announced her plans to run again in 1994, but recently withdrew and endorsed Wheat.

DEMOCRATS:

Marsha Murphy, announced
Steve Carroll, announced
Gerald Ortals, announced
Alan Wheat, to announce 1/94

Buzz Westphall, possible
Mike Shanahan, mentioned
Roger Wilson, mentioned
Joan Kelly Horn, mentioned

POLITICAL ENVIRONMENT:

The retirement of popular Senator Jack Danforth was a surprise to Republicans in Missouri. The Senator is widely respected and perceived as Missouri's premiere "statesman". Danforth, first elected to the Senate in 1976, chose not to seek a fourth term. He retires with a substantial war chest: \$645,962 cash on hand and no debt. His retirement recategorizes the race from "safe Republican" to "toss-up".

Missouri is a strong two party state and its open seats are usually very hotly contested. This will most likely hold true for the 1994 Senate election. In 1986, Kit Bond was a popular former Governor who had been out of office for two years. In an open seat race, Bond subsequently only narrowly defeated feminist Harriet Woods. That year, Missouri was the only Republican pick-up of a Democrat seat when we lost control of the Senate. Circumstances this year, with Ashcroft as a potential candidate being out of power for two years, are strikingly similar. The main difference this year is the GOP now faces a rejuvenated Democrat party. Control of the governorship gives the Democrats increased fundraising potential.

1992 was an extremely disappointing year for Missouri Republicans. Republicans lost the governorship for the first time in 16 years: our nominee, Attorney General Bill Webster, was facing potential indictment for using his state office for political purposes and lost at the hands of Democrat Lt. Governor, Mel Carnahan. (The Lt. Governor is elected separately in Missouri, so Carnahan was elected Lt. Governor at the same time Republican John Ashcroft was elected Governor). Both Webster (of *Webster v. Missouri* fame) and Ashcroft are associated with the pro-life issue. President Bush was also defeated in Missouri, trailing Bill Clinton by 10 percentage points. Additionally, four of the five GOP constitutional candidates lost. Senator Kit Bond was the only statewide Republican to win in 1992. Democrats maintained a six to three advantage of congressional seats. At the state legislature level Republicans lost two seats in the House and gained three seats in the Senate.

12-02-93 05:56 PM FROM

P009

LATEST POLLING INFORMATION:

Market Strategies

10/93

Ballot

Ashcroft	55%	Ashcroft	56%	Ashcroft	58%	Ashcroft	57%
R-Serot	35%	Wheat	28%	Carroll	26%	Murphy	27%

NA (Dem Poll)

5/93 Ballot

Ashcroft 52%

Wheat 37%

Cooper/Secrest (Dem Poll)

5/93 Ballot

Ashcroft 45%

Wheat 28%

ELECTION INFORMATION:

Candidate	Raised 6/93	Spent 6/93	PAC \$	COII 6/93	Debt
Ashcroft	\$83,810	\$7,404	\$0	\$76,405	\$1,488
R Serot	\$63,192	\$100,794	\$1,500	\$33,125	\$348,865
Wheat	\$262,150	\$118,767	\$169,400	\$220,514	\$1,000

File Date	Primary Date	Coord. Limit
March 29	Aug 2	\$463,572

Political Lineup:

Governor:	Mel Carnahan (D)	State Legislature:	15 R/ 33 D Senate
Lt. Governor:	Roger Wilson (D)		62 R/ 101 D House
Sec. of State:	Judy Moriarty (D)	Attorney General:	Jay Nixon (D)
Treasurer:	Bob Holden (D)	Auditor:	Margaret Kelley (R)

146
MISSOURI DFP ~~90~~ CONTACTS

Mr. and Mrs. Bob Rhodes
P.O. Box 504
Higginsville, MO
816/584-7030

Mr. E.S. Riss
215 W. Pershing
Kansas City, MO 64108
816/471-3400

Mr. Donald Sloan
816/753-2405
816/753-7822

Wendell Bailey
Former State Treasurer

Mr. Fred Merrill
Cereal Food Processors
P.O. Box 419020
Kansas City, MO 64141
913/262-1121
913/831-1042

Ms. Mary Mills Schrock
106 East 68th Terrace
Kansas City, MO 64113
816/444-7940

John Thompson
Former DFP Executive Director
417/468-5428

Mr. Lee Lieberman
Leclde Gas Company
720 Olive Street, Suite 1507
St. Louis, MO 63101
314/342-0500

Mr. William Grant
Businessman's Insurance
PO Box 419 458 BNA Tower
Kansas City, MO 64141
816/753-8000
913/362-3456

Mr. Chris Beale
KC Chamber of Commerce
920 Main Street
Suite 600
Kansas City, MO 64105

Ms. Roberta Capps Moore
500 Clayview
Liberty, MO 64068
816/781-2471

Mr. Timothy Hanstad
1630 E Swan Circle
Brentwood, MO 63144

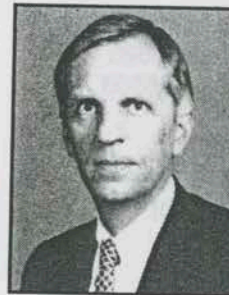
Mr. Joe Hoagland
Kansas City, MO
816/842-8986
913/727-6446

MISSOURI NATIONAL COMMITTEEMEN

Hillard F. Selck, 816/882-3366 (o) 816/882-6221 (h)
Roberta (Bobbie) Capps Moore, 816/781-2471 (h)

MISSOURI

Tom Fowler Chairman



Present

Chairman, Missouri Republican State Committee, elected -
September 10, 1988

Member, Missouri Republican Party, 1980 -

President and CEO, State Bank of Southwest Missouri

Previous

Chairman, Greene County GOP, 1977 - 1980

Missouri State Financial Services Advocate of the Year Award,
1986

Commission on Infrastructure Development Opportunities

Member, Board of Regents, Southwest Missouri State
University, 1987 - 1993

Board of Directors, State Bank of Southwest Missouri

RNC Activity

Secretary, Committee on Arrangements, Republican National
Convention, 1992

Delegate, Republican National Convention, 1980

Personal

Spouse: Linda

Education: B.S., University of Missouri;

M.B.A., Wharton School of Finance and Business;

J.D., University of Missouri

(cont.)

(cont.)

3310 East Sunshine Street
Post Office Box 10828
Springfield, MO 65808

(417) 882-1400 (o)
(417) 882-5914 (f)
(417) 882-3890 (h)

MISSOURI

Hillard Selck National Committeeman



Personal

National Committeeman, Missouri, elected - August 16, 1988
Member, Missouri State Party, 1950 -
Former Owner, Selck Insurance and Real Estate
Financial Consultant

Previous

Member, SBA National Advisory Council, 1990 - 1992
Missouri State Chairman, 1983 - 1988
City Clerk, City of Boonville, 1950 - 1954
Cooper County Treasurer, 1955 - 1962
Chairman, Cooper County GOP, 1978 - 1982
Chairman, Fourth District, 1980
Missouri Republican of the Year, 1987, 1988

RNC Activity

Delegate, Republican National Convention, 1980, 1984, 1988,
1992
Member, Committee on Arrangements, Republican National
Convention, 1988
Member, Committee on Call, Republican National Convention,
1992
Member, Chairman's Executive Council, 1993 -

Personal

Spouse: Marilyn
Children: Two
Education: B.S., University of Missouri

(cont.)

(cont.)

414 Main
Boonville, MO 65233

(816) 882-3366 (o)
(816) 882-6660 (f)
(816) 882-6221 (h)

MISSOURI

Roberta (Bobby) Capps Moore **National Committeewoman**



Present

National Committeewoman, Missouri, elected - August 22, 1984
Member, Clay County Republican Party, 1968 -

Previous

Liberty Federation Republican Women's Club, 1966 - 1970
Member, Vice Chairman, Missouri Republican Party, 1980 - 1984

Missouri Co-Chairman, Reagan - Bush, 1984
Vice President, National Society of the Daughters of the American Revolution
Member, Missouri Committee for Bicentennial of U.S. Constitution
Recipient, Missouri Republican of the Year Award, 1988
Member, Missouri Humanities Council, 1984 - 1992

RNC Activity

Alternate Delegate, Republican National Convention, 1968
Delegate, Republican National Convention, 1976, 1984, 1988, 1992
Member, RNC Rules Committee, 1985 -
Secretary, RNC Midwest Region, 1993

Personal

Spouse: Lowell
Children: Six
Education: A.A., William Woods College;
B.S., University of Missouri

(cont.)

(cont.)

309 Camelot Drive
Liberty, MO 64068

(816) 781-2471 (h)

REP. TALENT DINNER

MO NRSC Update

MO Demographics

MISSOURI DEMOGRAPHIC PROFILE

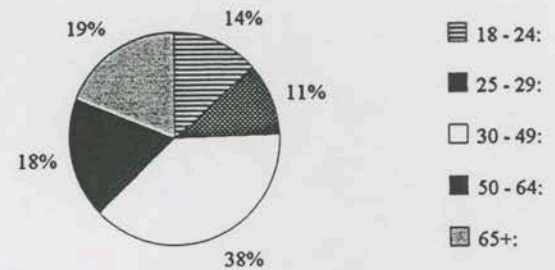
Population Data

Total Population:	5,117,073
Voting Age Population:	3,802,247
Total Population Voting Age:	74.3%
Black Voting Age Population:	369,239
Nonwhite Rank:	19
Black Voting Age Population:	9.7%
Nonwhite Rank:	20
Hispanic Voting Age Population:	40,430
Nonwhite Rank:	29
Hispanic Voting Age Population:	1.1%
Nonwhite Rank:	36
Asian Voting Age Population:	29,405
Nonwhite Rank:	23
Asian Voting Age Population:	0.8%
Nonwhite Rank:	35

Voting Age Population Data

18 - 24:	517,191
25 - 29:	420,001
30 - 49:	1,451,149
50 - 64:	696,225
65+:	717,681

Voting Age Population Distribution



Number of Counties:

115

MISSOURI 1992 ELECTION SUMMARY

HISTORICAL PRESIDENTIAL PERFORMANCE

	REP. VOTE	REP %	DEM. VOTE	DEM %	OTH. VOTE	OTH %	TOTAL	REGISTRATION
1992 BUSH/CLINTON/PEROT:	811,159	34.0%	1,053,873	44.2%	518,741	21.8%	2,383,773	3,067,955
1992 BUSH/DUKAKIS:	1,084,953	51.8%	1,001,619	47.9%	6,656	0.3%	2,093,228	2,943,025
1994 REAGAN/MONDALE:	1,274,188	60.0%	848,583	40.0%	0	0.0%	2,122,771	2,969,300
1990 REAGAN/CARTER/ANDERSON:	1,074,181	51.6%	931,182	44.7%	77,920	3.7%	2,083,283	2,845,023
1976 FORD/CARTER:	928,808	47.6%	999,163	51.2%	24,329	1.2%	1,952,300	2,552,852
1972 NIXON/McGOVERN:	1,154,058	62.1%	698,531	37.6%	4,804	0.3%	1,857,393	N/A
1968 NIXON/HUMPHREY/WALLACE:	811,932	44.9%	791,444	43.7%	206,126	11.4%	1,809,502	N/A

STATEWIDE ELECTION RETURNS

	REP. VOTE	REP %	DEM. VOTE	DEM %	OTH. VOTE	OTH %	TOTAL
1992 SENATE:	1,221,901	51.9%	1,057,967	44.9%	75,048	3.2%	2,354,916
1992 GOVERNOR:	968,574	41.3%	1,375,425	58.7%	0	0.0%	2,343,999
1988 SENATE:	1,407,416	67.7%	660,045	31.8%	11,410	0.5%	2,078,871
1988 GOVERNOR:	1,339,531	64.2%	724,919	34.8%	21,467	1.0%	2,085,917

STATE SENATE

YEAR	SEATS	DEM	REP	OTH	NET
1992	34	21	13	0	2
1990	34	23	11	0	-3
1988	34	20	14	0	1

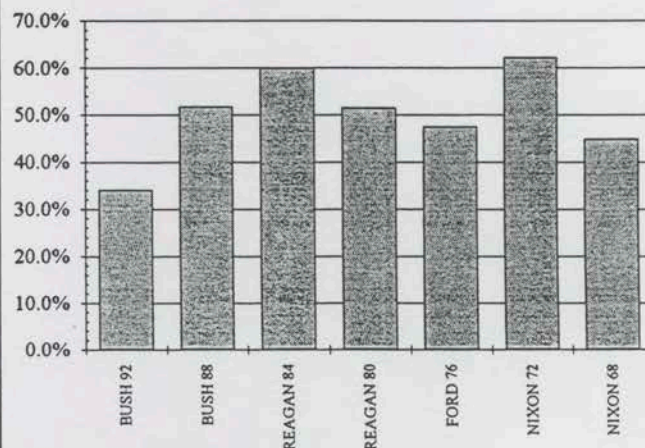
STATE HOUSE

YEAR	SEATS	DEM	REP	OTH	NET
1992	163	100	63	0	-2
1990	163	98	65	0	7
1988	163	105	58	0	6

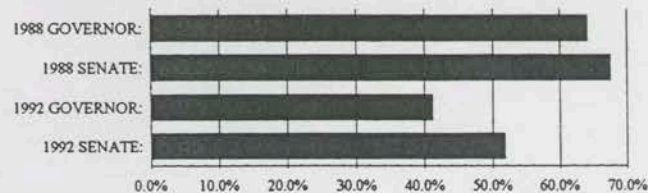
U.S. HOUSE OF REPRESENTATIVES

YEAR	SEATS	DEM	REP	OTH	NET
1992	9	6	3	0	0
1990	9	6	3	0	-1
1988	9	5	4	0	0

REPUBLICAN PRESIDENTIAL PERFORMANCE



REPUBLICAN STATEWIDE PERFORMANCE



MO GOP Leadership

MO DFP

SEMI-FINAL

12/2/93

SENATOR DOLE SCHEDULE -- DECEMBER 3-8, 1993Friday, December 3

10:05 AM Lv. residence

10:25 AM Ar. Washington National Airport
Signature Flight Support
703/419-8440

10:30 AM Lv. Washington

AIRCRAFT: Challenger
OWNER: US Tobacco
TAIL NO.: N 25 SB
SEATS: 10PILOT: Lee Kraus
CO-PILOT: Wayne Firmender
ATTENDANT: Bonnie HarringtonMANIFEST: Senator Dole
Mike Glassner
Chris Swonger, UST
John Atwood, Mgr., UST Wine Div.

FLIGHT TIME: 1 hr 35 mins

CONTACT: Diane Nickerson
203/622-3260 (O)
203/863-7228 (FAX)
Blanche Durney (Aviation Dept.)
203/622-3345 (O)
914/997-2145 (FAX)12:05 PM Ar. Grand Rapids, Michigan
Kent County International Airport
AMR Combs
616/949-5000

MET BY: Debbie Marshall, Ehlers campaign mgr.

12:10 PM Lv. Kent County Airport

DRIVER: Dan Vink, Ehlers campaign

DRIVE TIME: 15 minutes

PAGE TWOFriday, December 3 (continued):

12:25 PM

Ar. Harley Hotel
616/949-8800

MET BY: Vern Ehlers, House candidate
David Doyle, State GOP Chair
Tom Shearer, 3rd District GOP Chair
Bill Swets, Kent Co. Chair
Chuck Yob, RNC Committeeman
Betsy DeVos, RNC Committeewoman

12:30 PM-

1:30 PM

ATTEND/SPEAK - LUNCHEON FUNDRAISER FOR
STATE SENATOR VERN EHLERS (candidate for
Cong. Paul Henry's seat - Special Election Dec. 7)

CROWD SIZE: 200 @ \$100 per person

HEAD TABLE:

Senator Dole
State Senator Vern Ehlers, candidate
David Doyle, GOP Chairman
Tom Shearer, 3rd District Chairman
Bill Swets, Kent Co. Chairman
Chuck Yob, RNC Committeeman
Betsy DeVos, RNC Committeewoman
Jerry Vanderwall, Ehlers Finance Chairman

PROGRAM:

Call to Order
Introduction of Head Table and Senator Dole
Invocation
Luncheon meal
Tribute Presentation to Mrs. Cornelia Cook Ooms -
Representative Rick Bandstra
Special plaque presentation to Senator Dole by
Board of Managers, Veterans Homes --
Bill Coffey
Introduction of Vern Ehlers - Jerry Vanderwall
Brief Remarks - Vern Ehlers
Introduction of Senator Dole - Vern Ehlers
REMARKS - SENATOR DOLE

CONTACT: Debbie Marshall, campaign manager
616/285-8078 (campaign ofc.)
616/285-9321 (FAX)
517/373-1801 (Senate ofc.)

BOB DOLE

ID:202-408-5117

DEC 02 '93

17:34 No.007 P.05

PAGE THREE

Friday, December 3 (continued):

1:30 PM- PRESS AVAILABILITY
2:00 PM

2:00 PM- PRIVATE MEETING WITH CORNELIA COOK OOMS ("COOKIE")
2:20 PM (SEE ATTACHED LETTER)

2:20 PM- PRIVATE MEETING WITH VERN EHLERS
2:40 PM

2:45 PM Lv. Harley Hotel

DRIVE TIME: 15 minutes

3:00 PM Ar. Kent County International Airport
AMR Combs
616/949-5000

3:05 PM Lv. Grand Rapids

FLIGHT TIME: 1 hr 10 mins
TIME CHANGE: -1 hour

3:15 PM Ar. St. Louis, Missouri
Lambert Field
Midcoast Aviation
314/731-7111

MET BY: Congressman Jim Talent

3:20 PM Lv. Midcoast Aviation

DRIVER: Jim Cunnane

DRIVE TIME: 10 minutes

3:30 PM Ar. Airport Radisson Hotel
314/291-6700

PROCEED TO LACLEDE BOARDROOM

3:30 PM- ONE-ON-ONE PRESS INTERVIEWS:
4:00 PM

3:30-3:35 KSDK-TV (NBC)
3:35-3:40 St. Louis Post-Dispatch (Jo Mannies)
3:42-3:52 KMOX-AM (CBS Radio) (Barbara
Whitesides, Doug McElvein)
3:55-4:00 KTVI-TV (ABC) (Roche Madden)

CONTACT: Steve Boriss, Talent's Press Secretary
314/872-9561 or 878-7887

PAGE FOURFriday, December 3 (continued):

4:00 PM PROCEED TO CLAYTON ROOM

4:05 PM- MEETING WITH AGRICULTURE/AGRIBUSINESS TYPES

5:00 PM

FORMAT: Roundtable discussion

TOPICS OF DISCUSSION:

Health care, ethanol, Fish and Wildlife
Service constraints on levee rebuilding

ATTENDEES:

Paul H. Hatfield -- Moderator and Chairman
President & CEO, Protein Technologies Int'l

Larry Dietrich, South Dakota farmer and
President, American Soybean Assoc.

Dale Roberds, Pittsburg, KS, farmer and
Board of Directors, Am. Soybean Assoc.

Walter Hobgood, V.P., Animal Science Div.,
Monsanto Agriculture Group

Paul Justis, Dept. Manager,
Doane Agricultural Services Co.

Morris Larson, Exec. VP and CEO,
Merchant Exchange of St. Louis

Ed McMillan, Chairman, Purina Mills

Dick McWard, VP, Industry & Corp. Affairs, Bunge

David Ottaway, Exec. VP & CEO,
N. American Equipment Dealer Assoc.

John Pellet, Missouri grain farmer

Larry Rus, Exec. Dir., Nat'l Corn Growers

John Campden, Dir., Market Developmt., Corn Growers

John Russell, President, Missouri Agriculture Indust.

Earl Stolte, Missouri grain farmer

CONTACT: Claude Alexander
202/289-2011

PAGE FIVEFriday, December 3 (continued):

5:10 PM PROCEED TO LACLEDE BOARDROOM

5:15 PM- MEET WITH CEO'S OF MAJOR ST. LOUIS FIRMS
5:45 PM AND CONGRESSMAN TALENT

ATTENDEES:

John McDonnell, McDonnell Douglas
Dick Mahoney, Monsanto
Bob Baer, United Van Lines
Steve Brauer, Hunter Engineering
Richard Liddy, General American Insurance

Tentative attendees:

B.A. Bridgewater, Brown Shoe
Cliff Eason, Southwestern Bell
Tom Jacobsen, Mercantile Bank
Chuck Knight, Emerson Electric
Craig Schnuck, Schnuck Supermarkets

TOPICS OF DISCUSSION:

NAFTA, Budget Deficit, Health Care, Defense

CONTACT: Steve Boriss

5:45 PM- ATTEND FUNDRAISER FOR CONGRESSMAN JIM TALENT
7:30 PM

CONTACT: Edith Cunnane
(Asst: Karen Mohan)
314/453-0344 (O)
314/453-0805 (FAX)
314/432-4208 (H)
703/548-1848 or 202/479-7093

5:45 PM PROCEED TO MISSOURI ROOM

5:45 PM- PRIVATE RECEPTION FOR MAJOR DONORS
6:30 PM (In progress from 5:30)

CROWD SIZE: 50 @ \$1,000 per person

FORMAT: Receiving line with photos
(Senator Dole and Cong. Talent)

Mix and Mingle

6:30 PM- TAPED INTERVIEW WITH KMOV-TV (CBS)
6:35 PM (Interviewer: Mary Phelan)

6:35 PM PROCEED TO MAIN BALLROOM

PAGE SIXFriday, December 3 (continued):

6:35 PM-

ATTEND/SPEAK - FUNDRAISING DINNER

7:15 PM

CROWD SIZE: 400 @ \$250 per person

FORMAT: No head table
Free-standing podium with mic

PRESS: OPEN (during Remarks portion of dinner)

DINNER CO-SPONSORS:

August Busch (will be out of town)
Andrew Craig, Boatman's Bank
Charles Knight, Emerson Electronics
John McDonnell, McDonnell-Douglas
Richard Mahoney, Monsanto
Steven Brauer, Hunter Engineering

PROGRAM:

Welcome - Emcee Michael Roarty,
Exec. VP for Marketing,
Anheuser-BuschRemarks and Intro Senator Dole -
Senator Kit Bond

REMARKS - SENATOR DOLE

Q&A - Time permitting

NOTE: Attending will be Ned and Dollie Fryer,
he is Board Member, Amer. Red Cross

7:15 PM

Lv. Radisson Hotel

7:25 PM

Ar. Lambert Field
Lambert Field
Midcoast Aviation
314/731-7111

7:30 PM

Lv. St. Louis

FLIGHT TIME: 1 hr 30 mins
TIME CHANGE: None

9:00 PM

Ar. Sioux Falls, South Dakota
Joe Foss Field
Business Aviation
605/336-7791MET BY: Senator Pressler (3 cars) and
Jack Rentschler & Don Boen

PAGE SEVENFriday, December 3 (continued):

DRIVE TIME: 10 mins

DRIVER: Jack Renschler

PASSENGERS: Senator Dole
Senator Pressler
Don Boen

9:15 PM Ar. Downtown Holiday Inn

9:30 PM PROCEED TO BURGUNDY ROOM (10th Floor)

9:30 PM- MEETING WITH MAJOR DONORS TO FRIENDS OF
10:00 PM LARRY PRESSLER
(In progress from 8:45)

ATTENDEES:

Jack Renschler - Event Chairman
(Renschler's Truck Stop, 88 Dole Delegate)Don Boen & guests - Boen & Associates insurance
Gary Olson - President, Norwest Bank
Mike Nichols - Nichols Media printers
Kevin Schieffer - Attorney, DM&E Railroad
Steve Neff - CPA - Eide, Helmecke Accountants
Dan Nelson - Tour Chairman - J.D. Eyryder Car Sales
State Rep. Dave Munson - Govt Affairs VP, Citibank
Ron Williamson - President, Citibank (SD)
Linda Laskowski - VP, US West
Dr. Gon Sanchez - Neurosurgeon
Art Nordstrom + wife, son - Nordstrom Auto Salvage
Brian Haberman - supporter
Bill Baker - Pres., First Nat'l Bak
Roger Haugo - Pres., Valley Exchange Bank
Roger Larsen - Williams Insurance
Vance Goldhammer+ 1 - attorney, 88 Dole delegateRON: Holiday Inn
605/339-2000

Crew RON: Fairfield - 605/361-2211

BOB DOLE

ID:202-408-5117

DEC 02'93 17:36 No.007 P.10

PAGE EIGHT

Saturday, December 4

NOTE: CONTACT FOR ALL SOUTH DAKOTA EVENTS:
Jan Benson or Brad Beckstrom
202/224-5842

NOTE: SAME PRICE, CONCEPT AND FORMAT FOR ALL SOUTH
DAKOTA EVENTS:

Mid-term Salute to Larry Pressler.
\$25 per person.
Proceeds to be split between County
GOP and Friends of Larry Pressler.

FORMAT:
Intro Senator Dole - Senator Pressler
REMARKS - SENATOR DOLE

Q&A

PRESS: OPEN

EVENT CHAIR: Dan Nelson, Sioux Falls businessman

8:00 AM-
9:00 AM

ATTEND/SPEAK - FUNDRAISING BREAKFAST
Holiday Inn
(Event runs 7:45-9:00 AM)

NOTE: Mary Wiese, who worked for DFP in 1988, is a
hostess at the event and will be looking for
Senator Dole to say hello.

9:05 AM

Lv. Holiday Inn

DRIVER: Bob Elmen

PASSENGERS: Senator Dole
Senator Pressler

9:15 AM

Ar. Business Aviation
605/336-7791

9:20 AM

Lv. Sioux Falls

FLIGHT TIME: 25 mins

MANIFEST: Senator Dole
Senator Pressler
Mike Glassner
Don Petersen, SD GOP Chair
Dan Nelson, Event chairman
Jack Rentschler
Steele Gudal
Chris Swonger, UST
John Atwood, UST

PAGE NINE

Saturday, December 4 (continued):

9:45 AM Ar. Yankton, S.D.
Chan Gurney Municipal Airport
Falcon Aviation
605/665-3473

9:50 AM Lv. Yankton Airport

DRIVE TIME: 15 mins

DRIVER: Louis Wudel

PASSENGERS: Senator Dole
Senator Pressler
Milo Daily, publisher of Yankton Press
and Dakotan

10:05 AM Ar. Yankton Inn
1607 East Highway 50
605/665-2906

10:05 AM- ATTEND/SPEAK - FUNDRAISING COFFEE
11:10 AM (Event in progress from 10:00)

11:15 AM Lv. Yankton Inn

DRIVE TIME: 15 mins

DRIVER: Louis Wudel

PASSENGERS: Senator Dole
Senator Pressler
Jim Cope

11:30 AM Ar. Chan Gurney Municipal Airport
Falcon Aviation
605/665-3473

11:35 AM Lv. Yankton

FLIGHT TIME: 45 mins

MANIFEST: Senator Dole
Senator Pressler
Mike Glassner
Don Petersen, SD GOP Chair
Dan Nelson, Event chairman
Brad Beckstrom, Pressler staff
Chris Swonger, UST
John Atwood, UST

PAGE TENSaturday, December 4 (continued):

12:20 PM Ar. Aberdeen, S.Dak.
Aberdeen Regional Airport
Quest Aviation
605/225-8008

12:25 PM Lv. Aberdeen Airport

DRIVE TIME: 5 mins

DRIVER: Rep. Steve Cutler

PASSENGERS: Senator Dole
Senator Pressler
Vi Stoia

12:30 PM Ar. Holiday Inn
2727 6th Avenue, S.E.
605/225-3600

12:30 PM- ATTEND/SPEAK - FUNDRAISING LUNCHEON
1:35 PM (Event in progress from 12:00)

1:40 PM Lv. Holiday Inn

DRIVE TIME: 10 mins

1:50 PM Ar. Aberdeen Regional Airport
Quest Aviation
605/225-8008

1:55 PM Lv. Aberdeen

FLIGHT TIME: 25 mins

MANIFEST: Senator Dole
Senator Pressler
Mike Glassner
Don Petersen, SD GOP Chair
Dan Nelson, Event chairman
Brad Beckstrom, Pressler staff
Chris Swonger, UST
John Atwood, UST

2:20 PM Ar. Watertown, S.Dak.
Municipal Airport
Arrow Aviation
605/882-3488

PAGE ELEVENSaturday, December 4 (continued):

2:25 PM Lv. Watertown Airport

 DRIVE TIME: 10 mins

 DRIVER: Dennis Holein

 PASSENGERS: Senator Dole
 Senator Pressler
 Dr. Bob Batron
 Gordon Garnos, Publisher,
 Watertown Public Opinion

2:35 PM Ar. American Legion
 1412 9th Avenue, S.W.
 605/886-6243

2:35 PM- ATTEND/SPEAK - FUNDRAISING COFFEE
3:40 PM (In progress from 2:30)

3:45 PM Lv. Ramkota Inn

 DRIVE TIME: 10 mins

3:55 PM Ar. Arrow Aviation
 605/882-3488

4:00 PM Lv. Watertown

 FLIGHT TIME: 25 minutes

 MANIFEST: Senator Dole
 Senator Pressler
 Mike Glassner
 Don Petersen, SD GOP Chair
 Dan Nelson, Event chairman
 Brad Beckstrom, Pressler staff
 Chris Swonger, UST
 John Atwood, UST

4:25 PM Ar. Huron, S.Dak.
 Regional Airport
 Sioux Air Service
 605/352-4609 or 800/456-3312

PAGE TWELVESaturday, December 4 (continued):

4:30 PM Lv. Huron Airport

 DRIVE TIME: 10 mins
 DRIVER: Paul Christen

 PASSENGERS: Senator Dole
 Senator Pressler
 Mayor Merle Lewis

4:40 PM Ar. Huron University
 Campus Center, Wig-Wam Room
 605/352-8721, Ext. 71

4:40 PM- ATTEND/SPEAK - FUNDRAISING COFFEE
5:45 PM (Event in progress from 4:30)

5:50 PM Lv. Huron University

 DRIVE TIME: 10 mins

 DRIVER: Paul Christen

 PASSENGERS: Senator Dole
 Senator Pressler
 Warren Lotsberg

6:00 PM Ar. Huron Regional Airport
 Sioux Air Service
 605/352-4609 or 800/456-3312

6:05 PM Lv. Huron

 FLIGHT TIME: 30 mins

 MANIFEST: Senator Dole
 Senator Pressler
 Mike Glassner
 Don Petersen, SD GOP Chair
 Dan Nelson, Event chairman
 Brad Beckstrom, Pressler staff
 Chris Swonger, UST
 John Atwood, UST

6:35 PM Ar. Pierre, S.Dak.
 Municipal Airport
 Capital City Air
 605/224-9000

PAGE THIRTEENSaturday, December 4 (continued):

6:40 PM Lv. Pierre Airport
 DRIVE TIME: 20 mins
 DRIVER: Ron Holstein
 PASSENGERS: Senator Dole
 Senator Pressler
 Governor Walter Dale Miller
 Mrs. Pat Miller

7:00 PM Ar. Governor's Mansion
 605/773-3212 (Governor's Office)
 605/224-8055 (Mansion)

7:00 PM- ATTEND/SPEAK - FUNDRAISING RECEPTION
8:00 PM (Event in progress from 6:30)

8:05 PM Lv. Governor's Mansion

8:25 PM Ar. Pierre Municipal Airport
 Capital City Air
 605/224-9000

8:30 PM Lv. Pierre
 FLIGHT TIME: 1 hr 20 mins
 TIME CHANGE: -1 hour

8:50 PM Ar. Billings, Montana
 Logan International Airport
 Lynch Flying Service
 406/252-0508
 MET BY: Senator Conrad Burns and
 State Director Dwight MacKay
 Senator Mitch McConnell (TENTATIVE)

9:10 PM Ar. Billings Sheraton Hotel
 406/252-7400
 406/252-2401 (FAX)
 NOTE: Montana Woolgrowers Convention in progress
 at this hotel
 RON: Billings Sheraton Hotel
 Crew RON: Sheraton

PAGE FOURTEENSunday, December 5

CONTACT FOR ALL BURNS EVENTS:
Robert Arensberg, A.A.
202/224-2644
202/224-8594 (FAX)

9:50 AM

Lv. Sheraton Hotel

Accompanied by: Senator Burns
Dwight MacKay

10:00 AM

Ar. residence of Chuck and Marynell Heringer
2524 Emerson Place
406/252-8658

10:00 AM-
10:50 AM

ATTEND FOUNDERS CLUB BRIEFING

CROWD SIZE: 12 donors of \$1,000 annually,
(including the following):

Tim Babcock, RNC Committeeman, former Governor
Ione Brownson, Committeewoman
Dennis Rehberg - Lt. Governor

FORMAT: Informal meet and greet

PROGRAM:

10:10 Intro Mark Fisher, Founders Club Chairman,
by Chuck Heringer, Inner Circle Chairman
Brief Remarks - Mark Fisher

10:15 Intro Senator Burns - Chuck Heringer

10:20 REMARKS - SENATOR DOLE

10:50 AM

Lv. Heringer residence

11:00 AM

Ar. Sheraton Hotel

PROCEED TO (xxx) ROOM

11:00 AM-
11:45 AM

ATTEND INNER CIRCLE BRIEFING

CROWD SIZE: 100 donors of \$400 annually

PROGRAM:

11:15 Intro Senator Burns - Chuck Heringer

11:20 Intro Senator Dole - Conrad Burns

11:22 REMARKS - SENATOR DOLE

11:30 Q&A

PAGE FIFTEENSunday, December 5 (continued):

11:45 AM PROCEED TO (xxx) ROOM

11:45 AM- ATTEND INNER CIRCLE/FOUNDERS CLUB/
12:55 PM FUNDRAISING LUNCHEON FOR CONRAD BURNS
(In progress from 11:30)

CROWD SIZE: 200
(Including Inner Circle and
Founders Club; others paying
\$50 per person or \$75 per couple)

HEAD TABLE: NO
FORMAT: Buffet line

PROGRAM:

12:20 Intro special guests -- Lt. Governor
Dennis Rehberg

12:30 Intro Senator Burns - Lt. Gov. Rehberg

12:40 Intro Senator Dole - Senator Burns

12:45 REMARKS - SENATOR DOLE

12:55 Closing remarks - Lt. Gov. Rehberg

12:55 PM PROCEED TO (xxx) ROOM

1:00 PM- PRESS AVAILABILITY
1:15 PM

1:15 PM Lv. Sheraton Hotel

DRIVE TIME: 20 minutes

1:35 PM Ar. Logan International Airport
Lynch Flying Service
406/252-0508

1:40 PM Lv. Billings

FLIGHT TIME: 2 hrs 10 mins
TIME CHANGE: -1 hour

2:50 PM Ar. Marysville, California
Yuba County Airport
Pacific Flight Services
916/743-6571

MET BY: Congressman Wally Herger
Chief of Staff, John Magill
(Wife: Susan Magill, AA to John Warner)
District Director Fran Peace
916/893-8363

PAGE SIXTEEN**Sunday, December 5 (continued):**

3:00 PM Lv. Yuba County Airport
 DRIVE TIME: 5 minutes

3:05 PM Ar. The Bonanza Inn
 Yuba City
 916/674-8824
 916/674-0563 (FAX)

 PROCEED TO CONVENTION CENTER ON GROUNDS

3:15 PM- PRESS AVAILABILITY
3:45 PM

4:00 PM- ATTEND/SPEAK - FUNDRAISING RECEPTION FOR
5:30 PM CONGRESSMAN WALLY HERGER
 (Event runs 4:00-6:00 PM)

 CROWD SIZE: 100+ @ \$250 per person

 CONTACT: Brad Zerbe
 916/354-2500
 916/354-2567 (FAX)

5:35 PM Lv. Bonanza Inn

5:40 PM Ar. Pacific Flight Services

5:45 PM Lv. Marysville

 FLIGHT TIME: 25 mins

 MANIFEST: Senator Dole
 Mike Glassner
 Chris Swonger
 John Atwood
 Janet Zerbe

6:10 PM Ar. Stockton, California
 Metropolitan Airport
 AG Spanos Jet Center
 209/982-1550

 MET BY: Steve Ding
 District Director for Congressman Pombo
 209/951-3091

6:15 PM Lv. Spanos Jet Center

 DRIVE TIME: 10 minutes

PAGE SEVENTEENSunday, December 5 (continued):

6:25 PM Ar. Stockton Hilton Inn
209/957-9090
209/473-8908 (FAX)

(FRESHEN UP)

6:50 PM Lv. Hilton Inn

7:00 PM Ar. Le Bistro Restaurant
209/951-0885

7:00 PM- INFORMAL PRIVATE DINNER WITH:
8:30 PM

Lou Souza, Owner, Vaquero Farms. Largest tomato grower in US. Close friend of Alex Spanos.

John and Carol Harris, Owners, Harris Ranch. 100,000 acre ranch, largest in Central Valley. Grows 30 crops, including cotton. Also own a very large feedlot and have their own label beef.

Fred Lowell, Partner in Pillsbury, Madison & Sutro law firm, and Chevron's lawyer. Big Dole supporter.

Few others: names to be provided

CONTACT: Brad Zerbe
916/354-2500
916/354-2567 (FAX)

8:30 PM Lv. Le Bistro

8:45 PM Ar. Stockton Hilton Inn

RON (Crew also): Stockton Hilton Inn
209/957-9090

PAGE EIGHTEENMonday, December 6

8:00 AM PROCEED TO ROOMS 1 & 2 (2ND FLOOR) - HILTON INN

8:00 AM ATTEND/SPEAK - FUNDRAISING BREAKFAST FOR
9:00 AM CONGRESSMAN RICHARD POMBO
(Event runs 7:30-9:00 AM)

CROWD SIZE: 100+ @ \$250 per person

FORMAT: Photo op

9:00 AM- PRESS AVAILABILITY
9:30 AM

CONTACT: Brad Zerbe
916/354-2500
916/354-2567 (FAX)

9:35 AM Lv. Hilton Hotel

DRIVE TIME: 10 minutes

DRIVERS: Steve Ding, accompanied by Cong. Pombo

9:45 AM Ar. Metropolitan Airport
AG Spanos Jet Center
209/982-1550

9:50 AM Lv. Stockton

FLIGHT TIME: 25 mins

10:15 AM Ar. Sacramento
Executive Airport
Altair Aviation
916/428-7336

MET BY: Toby Ginsintanner
Wilson Advance staff
916/445-6400

10:20 AM Lv. Executive Airport

DRIVE TIME: 10 minutes

10:30 AM Ar. State Capitol Building
Governor Wilson's Office
916/445-2843

10:30 AM- PRIVATE MEETING WITH GOVERNOR WILSON
11:15 AM

PAGE NINETEENMonday, December 6 (continued)

11:20 AM PROCEED TO PRESS ROOM
11:30 AM TENTATIVE - PRESS AVAILABILITY WITH GOVERNOR WILSON
12:00 PM WALK ACROSS STREET TO:

The Sutter Club
1220 - 9th Street
916/442-0456
916/442-0580 (FAX)

PROCEED TO LIBRARY ROOM

12:00 PM- ATTEND/SPEAK - FUNDRAISING LUNCHEON FOR
1:30 PM GOVERNOR PETE WILSON

12:00-12:30 Reception
12:30-1:30 Luncheon

PRESS: CLOSED

FORMAT: Photographer at reception only

NO PODIUM, NO MIC
4-course meal (Senator Dole, Governor and
Mrs. Wilson will rotate tables after each
course)

CROWD SIZE: 20-40 @ \$5,000 per couple
(4 rounds of 10)

CONTACT: Sally Crocker
916/565-1994
916/929-8143 (H)
Brad Zerbe
916/354-2500
916/354-2567 (FAX)

1:45 PM Lv. The Sutter Club

DRIVE TIME: 10 minutes

1:55 PM Ar. Executive Airport
Altair Aviation
916/428-7336

2:00 PM Lv. Sacramento

FLIGHT TIME: 25 minutes

PAGE TWENTYMonday, December 6 (continued):

2:25 PM Ar. Modesto, California
Sky Trek Aviation
209/526-1320

MET BY: Ernest Gallo

2:30 PM Lv. Sky Trek Aviation

DRIVE TIME: 10 MINS

2:40 PM Ar. Gallo Winery
209/579-3201
209/579-3324 (FAX)

2:45 PM- PRIVATE MEETING/COFFEE WITH ERNEST GALLO
4:00 PM AND MEMBERS OF HIS FAMILY

CONTACT: Ouida McCullough
209/579-3201
209/579-3324 (FAX)

4:00 PM Lv. Gallo Winery

4:10 PM Ar. Sky Trek Aviation
209/526-1320

4:15 PM Lv. Modesto

FLIGHT TIME: 25 mins

4:40 PM Ar. San Francisco
International Airport
Signature Flight Support
415/877-6800

MET BY: Sam Bamieh and Storm Jenkins

4:45 PM Lv. Signature Flight Support

DRIVE TIME: 20 mins

5:00 PM Ar. residence of Sam Bamieh
40 Verbalee Lane
Hillsborough, California
415/573-1894

PROCEED TO GUEST ROOM

5:00 PM- PRIVATE/STAFF TIME
6:00 PM

PAGE TWENTY-ONEMonday, December 6 (continued):

6:00 PM PROCEED TO MUSIC ROOM

6:00 PM- ATTEND CAMPAIGN AMERICA FUNDRAISING DINNER
8:30 PM (Event runs 6:00-9:00)

CROWD SIZE: 40-60 at \$5,000/person or couple

HEAD TABLE: (List to be determined)

PODIUM: NO (Lapel mic)

PROGRAM:

6:00 PM- Cocktails/Mix-n-Mingle - Music Room
6:40 PM

6:40 PM PROCEED TO LIBRARY

6:40 PM- Photos with guests
6:55 PM

6:55 PM PROCEED TO DINING ROOM

7:00 PM Dinner is served

PROGRAM (CONTINUED):

After salad course:

Remarks and Intro of Senator Dole -
Sam Bamieh

REMARKS - SENATOR DOLE
Q&A

Dinner service continues

CONTACT: Storm Jenkins
415/349-7837 (O)
415/681-3920 (H)
415/349-0759 (FAX)
415/719-8400 (Pager)

Sam Bamieh
415/349-7837

8:30 PM Lv. Bamieh residence

DRIVE TIME: 20 minutes

8:50 PM Ar. Signature Flight Support
415/877-6800

PAGE TWENTY-TWO

Monday, December 6 (continued):

8:55 PM Lv. San Francisco

FLIGHT TIME: 1 hour

9:55 PM Ar. Santa Ana, California
John Wayne Airport
Martin Aviation
714/263-5800

MET BY: Mrs. Joe (Colleen) Reppert
('94 Blue Chevy Suburban)

10:00 PM Lv. Martin Aviation

DRIVE TIME: 10 mins

10:10 PM Ar. Meridian Hotel
714/476-2001

RON: Meridian Hotel
Senator Dole: Rooms 938-942
Mike Glassner: Room 933

Crew RON: Marriott, Irvine -- 714/553-0100

Tuesday, December 7

8:25 AM PROCEED TO BISTRO TERRACE ROOM (Main Floor)
Meridien Hotel

8:30 AM- ATTEND CAMPAIGN AMERICA FUNDRAISING BREAKFAST
10:00 AM (Mortgage Bankers, Builders, etc.)
Meridian Hotel

CROWD SIZE: 60-70

GATE: \$50,000

FORMAT: Informal Buffet Breakfast
HEAD TABLE: NO
STANDING PODIUM AND MIC

PROGRAM:

Intro Senator Dole - Joe Reppert
REMARKS - SENATOR DOLE
Q&A

CONTACT: Joe Reppert
714/549-5700 (O)
714/549-0684 (FAX)

PAGE TWENTY-THREE**Tuesday, December 7 (continued):**

10:00 AM RETURN TO SENATOR DOLE'S SUITE IN MERIDIAN HOTEL

10:00 AM- PRIVATE MEETING WITH BILL KECK regarding
10:30 AM Hal Furman Senate campaign (Nevada)

CONTACT: Pat Templeton
703/525-3888

10:30 AM Lv. Meridian Hotel

DRIVE TIME: 45 mins

DRIVER: Colleen Reppert

11:15 AM Ar. Doubletree Hotel
100 The City Drive
Orange, California
714/634-4500

ARRANGEMENTS HAVE BEEN MADE FOR CAR TO BE PARKED
IN BUS AND TAXI LANES AT ENTRANCE TO HOTEL

MET ON ARRIVAL BY: Congressman Royce

11:10 PM PROCEED TO (Room to be determined)

11:15 AM- PRESS AVAILABILITY WITH CONGRESSMAN ED ROYCE
11:30 AM

11:30 AM- PRIVATE MEETING WITH LARRY FEEMSTER OF
11:35 AM "IN AND OUT BURGER"
(Fastfood franchise with temporary employees
concerned about health care plan)

11:35 AM- PRIVATE MEETING WITH DR. ART ASTORINO
11:40 AM (Officer, Orange County Medical Assoc. --
will be conducting health care forum in
Newport Beach -- wishes to discuss health care)

11:40 AM- PRIVATE MEETING WITH REPRESENTATIVES FROM
11:45 AM NATIONAL ASSOC. OF CONVENIENCE STORES
(Also health care concerns)

11:45 AM PROCEED TO MAIN BALLROOM

PAGE TWENTY-FOURTuesday, December 7 (continued):

11:45 AM-
1:00 PM

ATTEND/SPEAK - FUNDRAISING LUNCH FOR
CONGRESSMAN ED ROYCE
(Event in progress from 11:30)

CROWD SIZE: 200 @ \$150 per person

PRESS: CLOSED

HEAD TABLE: Senator Dole
Congressman Ed Royce
Mrs. Ed (Marie) Royce
Tom Fuentes, Orange Co. GOP Chairman
Cong. Dana Rohrabacher (TENTATIVE)
Cong. Chris Cox (TENTATIVE)
Cong. Bob Dornan (TENTATIVE)

NOTE: Colleen Reppert will be seated at table
with Buck Johns, Lincoln Club Chairman

PROGRAM:

Invocation - Tom Fuentes
Pledge - TBD (guest Congressman)
Lunch is served
Remarks and Intro Senator Dole - Congressman Royce
REMARKS - SENATOR DOLE
Q&A

CONTACT: Marsha Gilchrist
714/992-8081 (Cong'l Ofc.)
714/992-1143 (Campaign)
Joan Bates Korich, A.A.
202/225-4111

1:00 PM

Lv. Doubletree Hotel

DRIVE TIME: 40 MINS

DRIVER: Colleen Reppert

1:40 PM

Ar. John Wayne Airport
Santa Ana
Martin Aviation
714/263-5800

1:45 PM

Lv. Santa Ana

FLIGHT TIME: 1 hour

TIME CHANGE: +1 hour

PAGE TWENTY-FIVETuesday, December 7 (continued):

3:45 PM

Ar. Phoenix, Arizona
Sky Harbor International Airport
Executive Aircraft Terminal
602/273-3395

MET BY: Don and Rubee Parlett (2 cars)
(Personal friends of Jon and Caryl Kyl;
He is retired executive from Salt River
Project; and Republican fundraiser)
She is Kyl volunteer of long-standing.

3:50 PM

Lv. Executive Aircraft Terminal

DRIVE TIME: 10 mins

4:00 PM

Ar. Doubletree Suites
320 North 44th Street
602/225-0500

PROCEED TO PARK ROOMS II AND III

4:00 PM-
5:30 PM

ATTEND FUNDRAISING RECEPTION FOR JOHN KYL

CROWD SIZE: 25 @ \$1,000 per person
(SENATOR MCCAIN WILL ALSO ATTEND)

FORMAT: Round-table discussion

CONTACT: Jill Matchinsky, Pam Barbey or
Robert Glazier
602/381-8630
602/381-8375 (FAX)

ATTENDEES REPRESENTING FOLLOWING PACS:

Bank of America
NFIB
AMA
Blue Cross/Blue Shield
Salt River Project
American Dental Assoc.
Ophthalmology Assoc.
American Fence
U.S. West
Phelps Dodge
Kiabab Industries
Nat'l Auto Dealers Assoc.
Hughes Aircraft
AT&T

PAGE TWENTY-SIXTuesday, December 7 (continued):

5:30 PM Lv. Doubletree
DRIVE TIME: 10 mins

5:40 PM Ar. Executive Aircraft Terminal
602/273-3395

5:45 PM Lv. Phoenix
FLIGHT TIME: 30 mins

6:15 PM Ar. Tucson
International Airport
Tucson Airport Authority
602/573-8128

MET BY: Jim Cowan
Exec. Asst. to the Governor
602/628-6580

6:20 PM Lv. Tucson Airport
DRIVE TIME: 30 mins

6:50 PM Ar. Loew's Ventana Canyon Resort
7000 N. Resort Drive
602/299-2020

PROCEED TO KIVA BALLROOM

6:50 PM-
8:00 PM ATTEND FUNDRAISING DINNER FOR GOV. SYMINGTON

(Event in progress from 6:00 reception;
Dinner runs to 9:00 - Speak before meal)

CROWD SIZE: 200-300 @ \$250 per person

FORMAT: PODIUM WITH MIC
HEAD TABLE

HEAD TABLE:

Senator Dole
Governor Symington
Senator McCain
Representative Jon Kyl
Hank Amos - Symington Finance Committee
Jim Click, Jr. - Finance Committee
Duff Hearon - Finance Committee

PAGE TWENTY-SEVENTuesday, December 7 (continued):

PROGRAM:

6:00 Reception begins
6:50 Senator Dole arrives -- mix and mingle
7:00 Dinner begins
Intro Head Table
7:10 REMARKS - SENATOR DOLE
7:45 Remarks - Governor Symington
8:00 Senator Dole departs

CONTACT: Gayle Holmgren
602/277-5909 (Ofc.)
602/320-9522 (Mobile)

8:00 PM Lv. Ventana Canyon Resort

DRIVE TIME: 30 mins

8:30 PM Ar. Tucson Airport Authority
602/573-8128

8:35 PM Lv. Tucson

FLIGHT TIME: 1 hr 40 mins

TIME CHANGE: +1 hour

11:15 PM Ar. San Antonio, Texas
International Airport
Sun Jet Aviation
210/828-0551

MET BY: Mary Hartman
210/641-8840

11:20 PM Lv. San Antonio International Airport

DRIVE TIME: 10 minutes

11:30 PM Ar. Hilton Airport Hotel
611 Northwest Loop 410
210/340-6060

RON: Hilton

Crew RON: Marriott - 210/828-7200

PAGE TWENTY-EIGHTWednesday, December 8

8:20 AM Lv. Hilton Hotel
DRIVE TIME: 10 minutes

8:30 AM Ar. residence of Nancy and Herb Stumberg
211 Country Lane
210/826-0083

8:30 AM- ATTEND/SPEAK - FUNDRAISING BREAKFAST FOR
9:30 AM KAY BAILEY HUTCHISON
CROWD SIZE: 50 @ \$250 or \$500 per person
PRESS: OPEN
PROGRAM: Remarks and Intro Senator Dole -
Senator Hutchison
REMARKS - SENATOR DOLE
CONTACT: Sue Walden
(Asst: Elise Abbott)
713/968-6560 (O)
713/270-1633 (H)

9:30 AM Lv. Stumberg residence
DRIVE TIME: 5 mins

9:35 AM Ar. San Antonio Airport

9:35 AM- PRESS AVAILABILITY WITH KAY HUTCHISON
9:45 AM

9:50 AM Lv. San Antonio
FLIGHT TIME: 50 mins
MANIFEST: Senator Dole
Senator Hutchison
Mike Glassner
Chris Swonger
John Atwood
Hutchison staff aide

10:40 AM Ar. Dallas
Love Field
KC Aviation
214/902-7500
MET BY: Dick Collins

PAGE TWENTY-NINEWednesday, December 8 (continued):

NOTE: ALL BAGGAGE AND OTHER ITEMS WILL HAVE TO BE
REMOVED FROM UST AIRCRAFT AT THIS TIME, AS YOU ARE
ON A DIFFERENT PLANE COMING HOME.

10:45 AM-
10:55 AM

PRESS AVAILABILITY WITH KAY HUTCHISON

11:00 AM

Lv. Love Field

DRIVE TIME: 10 mins

11:10 AM

Ar. The Mansion on Turtle Creek
2821 Turtle Creek Blvd.
214/559-2100

CONTACT: Jeff Trigger, Manager
Steve Sands, Owner
(son of Ray Hunt's half-sister,
Caroline Hunt)

11:15 AM-
11:45 AM

INTERVIEW WITH DALLAS MORNING NEWS

CONTACT: Dick Collins
214/298-4211

11:50 AM

PROCEED TO SHEPHERD KING ROOM

12:00 PM-
1:30 PM

CAMPAIGN AMERICA FUNDRAISING LUNCHEON

CROWD SIZE: 12 at present @ \$5,000 per person
(Still working the phones)

CURRENT ATTENDEES:

Richard Collins
Dick Bartlett - Mary Kay Cosmetics
Louis Beecherl, Jr. - Oil/Gas Investor
Trammell Crow - Trammell Crow Real Estate
David Glickman - Johnson & Gibbs
Ward Lay - PepsiCo/Frito-Lay
NationsBank Executive
T. Boone Pickens - Mesa Petroleum
Lonnie "Bo" Pilgrim - Pilgrim Pride
Harold Simmons - Valhi, Inc.
Henry "Bud" Smith - Clark/Bardes - GRAMM SUPPORTER
Raymond Willie - N. Texas Coors Distributor

CONTACT: Dick Collins
214/298-4211

PAGE THIRTYWednesday, December 8 (continued):

1:35 PM Lv. Mansion on Turtle Creek
DRIVE TIME: 10 mins

1:45 PM Ar. Love Field
KC Aviation
214/902-7500

1:50 PM Lv. Dallas
AIRCRAFT: To be determined
TAIL NO.:
FLIGHT TIME: 2 hrs 30 mins
TIME CHANGE: +1 hour

5:00 PM Ar. Washington National Airport
Signature Flight Support
703/419-8440
MET BY: Wilbert
PROCEED TO PRIVATE