

MEMORANDUM
January 28, 1993

TO: SENATOR/JOYCE

From: Judy

Re: Kansas Products

The two suggestions I have for Kansas products that we have access to quickly, would be Kansas baskets and steaks from Flint Hills Meats in Wamego. I have not been able to reach either of the two stores I know sell Kansas baskets this morning, as they do not open until 10 a.m.

However, I do have prices on steaks. You can get four 10 oz. Kansas City strips for \$20.34, (this includes shipping, which will not be necessary, as we can pick them up). Four 8 oz. bacon wrapped filets would run about \$12.00. The steaks are packed in small styrofoam coolers with dry ice. Dan is coming to Topeka from Manhattan later today, and could easily stop by and pick them up. They would be easy to handle in the small cooler, and the dry ice would keep them frozen for several days. If necessary, we could always have them repacked on Saturday, but I don't think it would be necessary.

Do you want to go with the steaks, or do you want me to look further.

8 10 oz. KC Strips? _____

4 8 oz. filets? _____

Keep looking? _____

*would they
be O.K.
Tue Monday?*

MEMORANDUM
January 27, 1993

TO: SENATOR/JOYCE/YVONNE

From: Judy

Re: Kansas Day - Media Request

I received a call from Rick Bloom, with KSNT TV here in Topeka, asking if you would consider doing a live interview on the 10:00 p.m. news, Friday night, January 29.

As you know, the Reception for legislators is scheduled from 8:00 p.m. to 9:30 p.m. -- however, it usually close to ten before you get away.

Do you want to accept the live interview at 10:00 p.m.?

YES

NO

Ramada Inn

Mike Harper called this morning and indicated Senator Kassebaum might want to fly back to Washington with you Saturday evening. Is this agreeable with you?

YES

NO

Do you plan to bring any Washington Staff with you to Kansas Day, other than those who are already here. As you know, Dan is in Kansas, and Marcie will also be here. Most of the Kansas staff will be in attendance for all or part of the weekend.

Washington staff other than Dan and Marcie?

YES

NO

Called Judy K

MEMORANDUM
January 27, 1993

TO: SENATOR/JOYCE/YVONNE

From: Judy

Re: Saturday, January 30

Dave Spears has been invited to speak to the Corn Growers and the Grain Sorghum Producers in Great Bend, on Saturday, January 30. He called me a few minutes ago and said that he had originally declined the invitation because he wasn't sure what your Kansas Day schedule would be. However, since he will be going to Russell with you, he is tentatively planning to fly with you to Russell, then go to Great Bend at 2 p.m. to speak, and return to Russell to fly on to Wichita with you at 4:30 p.m. Of course, they would love to have you attend as well, but realize you probably want to spend time with your family.

Do you have any problem with Dave going to Great Bend for the speech?

YES _____ NO _____

Do you want to go with him?

YES _____ NO _____

Maybe

MEMORANDUM
January 26, 1993

TO: SENATOR/JOYCE/YVONNE

From: Judy

Re: Kansas Day schedule - Draft #5

Following is Draft #5 of the schedule with appropriate changes.

PLEASE NOTE that the aircraft out of Wichita is the Beech Baron. The Cessna 414 Chancellor may be available, but they will not know until it gets back in on Thursday. The problem is that it may not have enough miles left (100 hour check up) to complete your schedule on Friday and Saturday. I believe you have used the Baron before -- it carries four passengers, plus two pilots.

You will also note that Lee Gerhard, State Geologist, will not be flying with you from Wichita to Topeka on Friday. He has another commitment in Topeka, so will be unable to get to Wichita for the Berg lecture.

Is the Beech Baron okay with you?

YES

NO

**The Baron does not have de-icing equipment, so if the weather was bad, it would be necessary to either cancel the trip or schedule another airplane.

KANSAS DAY SCHEDULE - DRAFT #5 (1-26-'93)FRIDAY, JANUARY 29

10:10 A.M. LV. CAPITOL FOR WASHINGTON NATIONAL
DRIVER: WILBERT

10:30 A.M. WHEELS UP FOR ST. LOUIS
AIRCRAFT: TORCHMARK HAWKER
TAIL NO.: N6TM
SEATS: 6
PILOT:
CO-PILOT:
FLIGHT TIME: 2 HRS
MANIFEST:
SENATOR DOLE
STAFF (???)

11:30 A.M. AR. ST. LOUIS, LAMBERT FIELD
FBO:
MET BY: JUDY BIVIANO

11:50 A.M. AR. HYATT REGENCY UNION STATION

NOON ST. LOUIS - SPEAK - LUNCH - REPUBLICAN
NATIONAL COMMITTEE MEETING

1:30 P.M. RNC MEETING - ELECTION OF NEW CHAIRMAN

2:15 P.M. LV. HYATT REGENCY FOR LAMBERT FIELD
DRIVER: JUDY BIVIANO

2:30 P.M. WHEELS UP FOR WICHITA

 AIRCRAFT: TORCHMARK HAWKER
 TAIL NO.: N6TM
 SEATS: 6
 PILOT:
 CO-PILOT:
 FLIGHT TIME: 1 HR.

3:30 P.M. ARRIVE WICHITA MID-CONTINENT
 YINGLING AIRCRAFT - 316/943-3246

 MET BY: DAVE SPEARS AND DIANA DOOMS

4:00 P.M. WICHITA -FOURTH FINANCIAL CENTER
 AUDITORIUM - DISTINGUISHED BERG
 LECTURE.

 4:00-4:30 P.M. - SPEAK
 4:30-5:00 P.M. - Q & A
 5:00 P.M. - 5:30 P.M. - RECEPTION

 CONTACT: DAN MERRIAM
 913/864-3965 (LAWRENCE #)
 316/689-3140 (WICHITA #)

5:30 P.M. LV. FOURTH FINANCIAL CENTER FOR RYAN
 AVIATION

 DRIVER: DIANA DOOMS

5:45 P.M. LV. WICHITA FOR TOPEKA

 AIRCRAFT: BEECH BARON
 TAIL NO. 4203A
 SEATS: 4
 PILOT: MITCHELL MOSIMAN
 CO-PILOT: DENNIS RICHMEIER
 FLIGHT TIME: 50 MIN.

 MANIFEST:
 SENATOR DOLE
 DAVE SPEARS

6:35 P.M. ARRIVE PHILIP BILLARD AIRPORT
T.J. TERMINAL - 913/234-2602

MET BY: LANCE LATHAM

6:50 P.M. ARRIVE RAMADA INN

OPTIONAL - STOP BY NATIVE SONS AND
DAUGHTERS BANQUET

PRESIDENT, NATIVE DAUGHTERS - BETTY DICUS

KANSAN OF THE YEAR
STEVEN HAWLEY, ASTRONAUT

DISTINGUISHED KANSAN OF THE YEAR
PATTY CAREY, FOUNDER OF KANSAS COSMOSPHERE

8:00 P.M. RECEPTION FOR REPUBLICAN LEGISLATORS HOSTED
TO BY SENATOR BOB DOLE, THE KANSAS REPUBLICAN
9:30 P.M. PARTY AND THE KANSAS DAY CLUB.

EXHIBIT ARENA - RAMADA INN LOWER LEVEL

RON - TOPEKA RAMADA INN DOWNTOWN - 913/234-5400

SATURDAY, JANUARY 30

8:00 A.M. BREAKFAST - REPUBLICAN CHAIRMEN AND VICE
TO CHAIRMEN

9:30 A.M.

SENATOR STOP BY AT 8:15 OR 8:30 P.M.

9:30 A.M. MEET BRIEFLY WITH REPUBLICAN STATE SENATORS
TO (THEY WOULD LIKE TO MEET WITH YOU BRIEFLY
9:45 A.M. IN YOUR SUITE TO PERSONALLY CONVEY THEIR
APPRECIATION FOR ALL YOUR HELP IN THE
ELECTION).

9:45 A.M. PER YOUR NOTES - MEET BRIEFLY WITH
TO SENATOR BOB VANCUM, R-OVERLAND PARK,
10:00 A.M. TO DISCUSS CONCERNS FOR THE FUTURE OF
THE REPUBLICAN PARTY IN KANSAS.

10:00 A.M. OPTIONAL - STOP BY DISTRICT MEETINGS

10:45 A.M. LEAVE RAMADA INN FOR AIRPORT

DRIVER: LANCE LATHAM

11:00 A.M. LV. PHILIP BILLARD FOR RUSSELL

AIRCRAFT: BEECH BARON
TAIL NO.: 4203A
SEATS: 4
PILOT: MITCHELL MOSIMAN
CO-PILOT: DENNIS RICHMEIER
FLIGHT TIME: 1 HR.

MANIFEST:

SENATOR DOLE
DAVE SPEARS
MIKE GLASSNER

NOON AR. RUSSELL AIRPORT
AIRPORT MANAGER - 913/483-6311

CITY VAN WILL BE AT THE AIRP9RT

NOON LUNCH-PRIVATE TIME WITH
TO FAMILY
4:15 P.M.

4:25 P.M. LV. RUSSELL FOR WICHITA
JABARA AIRPORT - MIDWEST CORPORATE AVIATION

AIRCRAFT: BEECH BARON
TAIL NO.: 4203A
SEATS: 4
PILOT: MITCHELL MOSIMAN
CO-PILOT: DENNIS RICHMEIER
FLIGHT TIME: 44 MINS.

MANIFEST:

SENATOR DOLE
DAVE SPEARS
MIKE GLASSNER

5:00 P.M. AR. JABARA AIRPORT
MIDWEST CORPORATE AVIATION
316/636-9700
MET BY: CATHIE YAGER

5:15 P.M. AR. BEECH ACTIVITY CENTER
RECEPTION - QUIVERA COUNCIL OF BOY
SCOUTS - 75TH ANNIVERSARY

5:45 P.M. PROGRAM BEGINS - SENATOR WILL SPEAK
AND PRESENT DISTINGUISHED EAGLE SCOUT
AWARD TO ROBERT GATES
ATTENDANCE: 400-500

6:15 P.M. LV. BEECH ACTIVITY CENTER FOR MIDWEST
CORPORATE AVIATION
DRIVER: CATHIE YAGER

6:30 P.M. LV. WICHITA FOR TOPEKA
AIRCRAFT: BEECH BARON
TAIL NO.: 4203A
SEATS: 4
PILOT: MITCHELL MOSIMAN
CO-PILOT: DENNIS RICHMEIER
FLIGHT TIME: 50 MINS.
MANIFEST:
SENATOR DOLE
MIKE GLASSNER

7:20 P.M. AR. T.J. TERMINAL, TOPEKA
MET BY: LANCE LATHAM

7:35 P.M. AR. RAMADA INN
BANQUET WILL BEGIN (GRAND MARCH SHOULD BE
OVER) - SENATOR WILL BE SEATED AT THE HEAD
TABLE.

SENATOR SCHEDULE FOR BRIEF REMARKS

KEYNOTE: NEW NATIONAL GOP CHAIRMAN
OR
REP. BOB MILLER, SPEAKER
KANSAS HOUSE OF REPRESENTATIVES
SEN. BUD BURKE, PRESIDENT OF THE
SENATE

8:45 P.M. LV. RAMADA INN FOR AIRPORT

DRIVER: LANCE LATHAM

9:00 P.M. WHEELS UP FOR WASHINGTON

AIRCRAFT: TORCHMARK HAWKER
TAIL NO.: N6TM
SEATS: 6
PILOT:
CO-PILOT:
FLIGHT TIME: 2 HRS.

MANIFEST:

SENATOR DOLE
STAFF (?)

12:00 P.M. AR. WASHINGTON NATIONAL

MET BY: WILBERT

PROPOSED KANSAS DAY SCHEDULE - DRAFT #3 (1-22-'93)

J.H. [Signature]

FRIDAY, JANUARY 29

NOON TO 1:30 P.M. ST. LOUIS - SPEAK - REPUBLICAN NATIONAL COMMITTEE MEETING

2:15 P.M. LV. ST. LOUIS FOR WICHITA

3:30 P.M. ARRIVE WICHITA MID-CONTINENT - RYAN AVIATION - 316/942-0141
MET BY: DAVE SPEARS

4:00 P.M. WICHITA -FOURTH FINANCIAL CENTER AUDITORIUM - DISTINGUISHED BERG LECTURE.

4:00-4:30 P.M. - SPEAK
4:30-5:00 P.M. - Q & A
5:00 P.M. - RECEPTION
5:30 P.M. - SUPPER - PETROLEUM CLUB

CONTACT: DAN MERRIAM
913/864-3965 (LAWRENCE #)
316/689-3140 (WICHITA #)

~~5:30
6:15 P.M.~~

LV. FOURTH FINANCIAL CENTER FOR RYAN AVIATION

DRIVER: CATHY YAGER

**LEE GERHARD, STATE GEOLOGIST, WOULD LIKE TO FLY TO TOPEKA WITH YOU TO ATTEND THE NATIVE SONS AND DAUGHTERS BANQUET. DAVE WILL ALSO BE FLYING TO TOPEKA WITH YOU. IS THERE A PROBLEM, PROVIDING THERE IS ROOM ON THE PLAN, WITH MR. GERHARD FLYING WITH YOU?

YES _____ NO

~~5:45
6:30 P.M.~~

LV. WICHITA FOR TOPEKA

AIRCRAFT:

TAIL NO.:
SEATS:
PILOT:
CO-PILOT:
FLIGHT TIME:

MANIFEST:

SENATOR DOLE
DAVE SPEARS
LEE GERHARD (?) STATE GEOLOGIST

~~7:15 P.M.~~

ARRIVE PHILIP BILLARD AIRPORT
T.J. TERMINAL - 913/234-2602

MET BY: LANCE LATHAM

~~7:30 P.M.~~

ARRIVE RAMADA INN - NATIVE SONS AND
DAUGHTERS BANQUET IN PROGRESS

KANSAN OF THE YEAR
STEVEN HAWLEY, ASTRONAUT

DISTINGUISHED KANSAN OF THE YEAR
PATTY CAREY, FOUNDER OF KANSAS COSMOSPHERE

8:00 P.M.

RECEPTION FOR REPUBLICAN LEGISLATORS HOSTED
BY SENATOR BOB DOLE, THE KANSAS REPUBLICAN
PARTY AND THE KANSAS DAY CLUB.

TO

9:30 P.M.

EXHIBIT ARENA - RAMADA INN LOWER LEVEL

RON - TOPEKA RAMADA INN DOWNTOWN - 913/234-5400

SATURDAY, JANUARY 30

8:00 A.M.

BREAKFAST - REPUBLICAN CHAIRMEN AND VICE
CHAIRMEN

TO

9:30 A.M.

SENATOR STOP BY AT 8:15 OR 8:30 P.M.

***THE KIWANIS PANCAKE FEED IS THE WEEK
BEFORE KANSAS DAY THIS YEAR.

9:30 A.M.
TO
9:45 A.M.

MEET BRIEFLY WITH REPUBLICAN STATE SENATORS
(THEY WOULD LIKE TO MEET WITH YOU BRIEFLY
IN YOUR SUITE TO PERSONALLY CONVEY THEIR
APPRECIATION FOR ALL YOUR HELP IN THE
ELECTION).

YES ___ NO ___

9:45 A.M.
TO
10:00 A.M.

PER YOUR NOTES - MEET BRIEFLY WITH
SENATOR BOB VANCUM, R-OVERLAND PARK,
TO DISCUSS CONCERNS FOR THE FUTURE OF
THE REPUBLICAN PARTY IN KANSAS.

YES ___ NO ___

10:00 A.M.

LV. RAMADA FOR PHILIP BILLARD

DRIVER: LANCE LATHAM

10:15 A.M.

LV. PHILIP BILLARD FOR RUSSELL

AIRCRAFT:
TAIL NO.:
SEATS:
PILOT:
CO-PILOT:
FLIGHT TIME:

*Leave a
list of
names*

MANIFEST:

SENATOR DOLE
DAVE SPEARS

11:15 A.M.

AR. RUSSELL AIRPORT - 913/483-6173

CITY VAN WILL BE AT THE AIRPORT

11:30 A.M.
TO
???

LUNCH-PRIVATE TIME WITH FAMILY

*Which
airplane?*

DO YOU PLAN TO STAY RUSSELL UNTIL
YOU GO TO WICHITA FOR THE 75TH ANNIVERSARY
OF THE QUIVERA COUNCIL OF BOY SCOUTS?

YES NO

4:15 P.M.

LV. RUSSELL FOR WICHITA
JABARA AIRPORT - MIDWEST CORPORATE AVIATION

AIRCRAFT:
TAIL NO.:
SEATS:
PILOT:
CO-PILOT:
FLIGHT TIME:

MANIFEST:

SENATOR DOLE
DAVE SPEARS
DAN STANLEY (?)

4:45 P.M.

AR. MIDWEST CORPORATE AVIATION
316/636-9700

MET BY: CATHY YAGER

5:00 P.M.

AR. BEECH ACTIVITY CENTER
RECEPTION - QUIVERY COUNCIL OF BOY
SCOUTS - 75TH ANNIVERSARY

David Wilson

5:45 P.M.

PROGRAM BEGINS - SENATOR WILL SPEAK
AND PRESENT DISTINGUISHED EAGLE SCOUT
AWARD TO ROBERT GATES

ATTENDANCE: 400-500

6:15 P.M.

LV. BEECH ACTIVITY CENTER FOR MIDWEST
CORPORATE AVIATION

6:30 P.M.

LV. WICHITA FOR TOPEKA

AIRCRAFT:
TAIL NO.:
SEATS:
PILOT:
CO-PILOT:

FLIGHT TIME:

MANIFEST:

SENATOR DOLE
DAN STANLEY (?)

**IF IT IS AGREEABLE WITH YOU, DAVE WILL
REMAIN IN WICHITA.

YES NO

7:15 P.M.

AR. T.J. TERMINAL, TOPEKA
MET BY: LANCE LATHAM

7:30 P.M.

AR. RAMADA INN
BANQUET WILL BEGIN (GRAND MARCH SHOULD BE
OVER) - SENATOR WILL BE SEATED AT THE HEAD
TABLE.

8:45 P.M.

LV. RAMADA INN FOR AIRPORT
DRIVER: LANCE LATHAM

9:00 P.M.

WHEELS UP FOR WASHINGTON

12:30 A.M.

AR. WASHINGTON NATIONAL

MET BY: WILBERT

Oy

3:00 on Jan. 28

MEMORANDUM
January 13, 1993

TO: SENATOR/JOYCE/YVONNE

From: Judy

PROPOSED KANSAS DAY SCHEDULE

FRIDAY, JANUARY 29

NOON ST. LOUIS - RNC Meeting *Walt/Clarkson/Kerry*

2:15 p.m. Lv. St. Louis for Wichita
*Don't have flight time yet.

3:30 p.m. Ar. Wichita - Mid-Continent
MET BY: Dave Spears

4:00 p.m. WICHITA - Fourth Financial Center
Auditorium - Distinguished Berg
Lecture. *David Taylor*

4:00-4:30 SPEAK
4:30-5:00 - Q & A
5:00 p.m. - RECEPTION
5:30 p.m. - Supper - Petroleum Club

6:15 p.m. - Lv. Fourth Financial Center
for airport

6:30 p.m. Lv. Mid-Continent for Topeka

AIRCRAFT:
TAIL NO:
SEATS:
PILOT:
CO-PILOT:
FLIGHT TIME:

MANIFEST: Senator Dole
Dave Spears

7:15 p.m. Ar. Philip Billard Airport
MET BY: Susie Hoffmann

7:30 p.m. Ar. Ramada Inn
 OPTION:
 Stop by Native Sons and Daughters

8:00 p.m. DOLE RECEPTION (?)
 to
 9:30 p.m.

YES ___ NO ___

RON - RAMADA INN

SATURDAY, JANUARY 30

8:00 A.M. BREAKFAST - Republican Chairmen and Vice
 Chairmen - Ramada Inn

Mike Hoover

~~Stop By?~~

~~YES ___ NO ___~~

9:00 A.M. National Guard Armory - Kiwanis Annual
 Pancake Feed.

Greg

~~Stop by?~~

~~YES ___ NO ___~~

*Go to
 Ramsey
 for lunch*

10:00 A.M. RAMADA INN - District Meetings

STOP BY?

YES ___ NO ___

11:00 a.m. RAMADA - Kansas Black Republican Council
 Meeting.

Stop By?

YES ___ NO ___

11:45 A.M. RAMADA - Kansas Republican Veteran's Club
 Luncheon

Stop by?
 YES ___ NO ___
 1:00 p.m. State Committee Meeting
 Stop by?
 YES ___ NO ___

2:00 P.M. TIME OPTIONAL - Meet with Charlie Norton,
 to artist from Leoti, Ks., interested in
 2:15 p.m. creating a bust of Senator Dole.

YES ___ NO ___

~~**Mr. Kim, Chung Gi, Councul General,
 South Korean Consulate General of Chicago,
 Ill., has requested a meeting with you --
 he will in Kansas City, but will come to
 Topeka if you can meet with him.~~

YES ___ NO ___

*late
 Yvonne
 Ray
 work*

OPTION ONE

3:45 p.m. Lv. Ramada Inn for Philip Billard
 4:00 p.m. Lv. Philip Billard for Wichita
 4:45 p.m. Ar. Wichita
 5:00 p.m. Arrive Beech Activity Center
 75th Anniversary annual meeting - Quivira
 Council of Boy Scouts
 Reception in progress
 5:45 p.m. PROGRAM BEGINS
 SENATOR WILL SPEAK AND PRESENT THE
 DISTINGUISHED EAGLE SCOUT AWARD TO

OK

*David Wilson
 Greg*


*Chuck Lang
 316-264-3386*

ROBERT GATES, DIRECTOR OF CIA.

YES___ NO___

- 6:15 p.m. Lv. Beech activity center for airport
- 6:30 p.m. Wheels up for Topeka
- 7:15 p.m. Ar. Philip Billard
MET BY: Susie Hoffmann
- 7:30 p.m. Ar. Ramada Inn - Take your place at the
head table - dinner will begin

OPTION TWO

- 4:30 p.m. TOPEKA - GRAND CLUB RECEPTION
to
- 5:30 P.M. Stop by?
YES___ NO___
- 5:30 P.M. RAMADA - Major Contributors Reception
to
- 6:45 p.m. Stop by? 
YES___ NO___
- 7:00 p.m. VIP Grand March begins
Participate?
YES___ NO___
- 7:30 P.M. KANSAS DAY BANQUET

DO YOU PLAN TO:

RETURN TO D.C. SATURDAY NIGHT? 

REMAIN OVERNIGHT IN TOPEKA___

**We are looking for other events around the state on Saturday.

MEMORANDUM
January 21, 1993

TO: SENATOR/JOYCE/YVONNE

From: Judy

Re: Kansas Day Reception for Republican State Legislators

Following is a copy of the invitation for the Reception for Legislators on Friday evening, January 29. Gilda and I plan to meet with Patti Porteous at the Ramada Inn today or tomorrow to discuss exactly what we will have in the way of refreshments for the reception. Although I cannot tell you "how much" it will be until after our meeting, I can tell you it will be less than we usually spend for your reception. The costs will be split three ways, between you, the Party, and the Kansas Day Club.

As soon as I have an idea of the exact figure, I will let you know.

04

Judy

any thing specified to be written

Senator Bob Dole
The Kansas Republican Party
and
The Kansas Day Club

cordially invite you
 to a special reception
 in honor of
 our Republican State Legislators

Friday, January 29, 1993
 8:00 pm to 9:30 pm
 Downtown Ramada Inn
 Topeka, Kansas

beverages and light hors d'oeuvres

regrets only, please 234-3416

MEMORANDUM
January 13, 1993

TO: SENATOR/JOYCE/YVONNE

From: Judy

PROPOSED KANSAS DAY SCHEDULE

FRIDAY, JANUARY 29

NOON ST. LOUIS - RNC Meeting *Wall/Clarkson*

2:15 p.m. Lv. St. Louis for Wichita
*Don't have flight time yet.

3:30 p.m. Ar. Wichita - Mid-Continent
MET BY: Dave Spears

4:00 p.m. WICHITA - Fourth Financial Center
Auditorium - Distinguished Berg
Lecture. *David Taylor*

4:00-4:30 SPEAK

4:30-5:00 - Q & A

5:00 p.m. - RECEPTION

5:30 p.m. - Supper - Petroleum Club

6:15 p.m. - Lv. Fourth Financial Center
for airport

6:30 p.m. Lv. Mid-Continent for Topeka

AIRCRAFT:
TAIL NO:
SEATS:
PILOT:
CO-PILOT:
FLIGHT TIME:

MANIFEST: Senator Dole
Dave Spears

7:15 p.m. Ar. Philip Billard Airport
MET BY: Susie Hoffmann

7:30 p.m. Ar. Ramada Inn
OPTION:
Stop by Native Sons and Daughters

8:00 p.m. DOLE RECEPTION (?)
to
9:30 p.m.

YES ___ NO ___

RON - RAMADA INN

SATURDAY, JANUARY 30

8:00 A.M. BREAKFAST - Republican Chairmen and Vice
Chairmen - Ramada Inn

~~Stop By?~~

~~YES ___ NO ___~~

9:00 A.M. National Guard Armory - Kiwanis Annual
Pancake Feed.

~~Stop by?~~

~~YES ___ NO ___~~

*Go to
for Ramada
lunch*

10:00 A.M. RAMADA INN - District Meetings

STOP BY?

YES ___ NO ___

11:00 a.m. RAMADA - Kansas Black Republican Council
Meeting.

Stop By?

YES ___ NO ___

11:45 A.M. RAMADA - Kansas Republican Veteran's Club
Luncheon

1:00 p.m. Stop by?
YES _____ NO _____
State Committee Meeting

Stop by?
YES _____ NO _____

2:00 P.M. to 2:15 p.m. TIME OPTIONAL - Meet with Charlie Norton, artist from Leoti, Ks., interested in creating a bust of Senator Dole.

YES _____ NO _____

*Notes
we have letter*

**Mr. Kim, Chung Gi, Counsul General, South Korean Consulate General of Chicago, Ill., has requested a meeting with you -- he will in Kansas City, but will come to Topeka if you can meet with him.

YES _____ NO _____ *Consul*

OPTION ONE

3:45 p.m. Lv. Ramada Inn for Philip Billard

4:00 p.m. Lv. Philip Billard for Wichita

4:45 p.m. Ar. Wichita

5:00 p.m. Arrive Beech Activity Center
75th Anniversary annual meeting - Quivira Council of Boy Scouts

Reception in progress

5:45 p.m. PROGRAM BEGINS
SENATOR WILL SPEAK AND PRESENT THE
DISTINGUISHED EAGLE SCOUT AWARD TO

Contact person:

OU


ROBERT GATES, DIRECTOR OF CIA.

YES ___ NO ___

- 6:15 p.m. Lv. Beech activity center for airport
- 6:30 p.m. Wheels up for Topeka
- 7:15 p.m. Ar. Philip Billard
MET BY: Susie Hoffmann
- 7:30 p.m. Ar. Ramada Inn - Take your place at the
head table - dinner will begin

OPTION TWO

- 4:30 p.m. TOPEKA - GRAND CLUB RECEPTION
to
- 5:30 P.M. Stop by?

YES ___ NO ___
- 5:30 P.M. RAMADA - Major Contributors Reception
to
- 6:45 p.m. Stop by? 

YES ___ NO ___
- 7:00 p.m. VIP Grand March begins

Participate?

YES ___ NO ___
- 7:30 P.M. KANSAS DAY BANQUET

DO YOU PLAN TO:

RETURN TO D.C. SATURDAY NIGHT?

REMAIN OVERNIGHT IN TOPEKA

**We are looking for other events around the state on Saturday.

MEMORANDUM
January 19, 1993

TO: SENATOR/JOYCE/YVONNE

From: Judy

Re: Dole Reception

In looking at the tentative Kansas Day schedule for the 29th, I noticed that your reception is the same time as the reception for legislators. It came to mind that since this was such a great year for Republican legislative candidates and you played a major role in their campaigns, perhaps you might want to host the reception for the legislators. I talked to Gilda about it -- she thinks it's a great idea, and is going to run it by Kim and Steve. The invitations went to the printer yesterday, but haven't been started yet. If you agree to this plan, they could add your name to the invitation as the host.

Republican headquarters had planned to pay for the legislators' reception -- we could either pay for it, or split the cost with the party.

Because they are sending the legislators invitations, we need to make a quick decision so that your name can be included on the invitation.

DO YOU HAVE AN INTEREST IN HOSTING THE RECEPTION FOR LEGISLATORS?

8:00 p.m. RECEPTION FOR LEGISLATORS HOSTED BY
to SENATOR BOB DOLE
9:30 p.m.

YES ___ NO ___

PAY FOR RECEPTION ___

SPLIT COSTS WITH PARTY ___

Handwritten: "Have lunch"

or

DO YOU PREFER TO HAVE YOUR OWN RECEPTION?

YES ___ NO ___

CONTACTS:

Judy Brown
913/836-2319 (h)
913/295-2745 (o)
Jo-Anne Coe
703/845-1714 (h)
202/408-5086 (o)
Diana Doms (h)
316/683-8724 (h)
316/263-4956 (o)
Cathie Yager
316/681-3804 (h)
316/263-4956 (o)
Dave Spears
316/755-3010 (h)
316/263-4956 (o)
YINGLING AIRCRAFT
316/943-3246

WEATHER: FRIDAY, JANUARY 29 - Skies will be mostly sunny, but the high will be around 30 degrees with Northeast winds, 5-15 mph. Low Friday night should be in the teens. SATURDAY - Gradual warming on Saturday, with a high around 40, mostly sunny skies.

KANSAS DAY SCHEDULE - SENATOR DOLE - FINAL

FRIDAY, JANUARY 29

3:30 P.M. ARRIVE WICHITA MID-CONTINENT
YINGLING AIRCRAFT - 316/943-3246

MET BY: DAVE SPEARS AND DIANA DOOMS

4:00 P.M. WICHITA -FOURTH FINANCIAL CENTER
AUDITORIUM - DISTINGUISHED BERG
LECTURE.

4:00-4:30 P.M. -- SPEAK

4:30-5:00 P.M. -- Q & A

5:00 P.M. - 5:30 P.M. - RECEPTION

CONTACT: DAN MERRIAM

913/864-3965 (LAWRENCE #)

316/689-3140 (WICHITA #)

5:30 P.M. LV. FOURTH FINANCIAL CENTER FOR RYAN
AVIATION
DRIVER: DIANA DOOMS

5:45 P.M. LV. WICHITA FOR TOPEKA
AIRCRAFT: BEECH BARON
TAIL NO. 4203A
SEATS: 4
PILOT: MITCHELL MOSIMAN
CO-PILOT: BRAD SAUNDERS
FLIGHT TIME: 50 MIN.
MANIFEST:
SENATOR DOLE
DAVE SPEARS

6:35 P.M. ARRIVE PHILIP BILLARD AIRPORT
T.J. TERMINAL - 913/234-2602
MET BY: LANCE LATHAM

6:50 P.M. ARRIVE RAMADA INN
OPTIONAL - STOP BY NATIVE SONS AND
DAUGHTERS BANQUET
PRESIDENT, NATIVE DAUGHTERS - BETTY DICUS
KANSAN OF THE YEAR
STEVEN HAWLEY, ASTRONAUT
DISTINGUISHED KANSAN OF THE YEAR
PATTY CAREY, FOUNDER OF KANSAS COSMOSPHERE

8:00 P.M. RECEPTION FOR REPUBLICAN LEGISLATORS HOSTED
TO BY SENATOR BOB DOLE, THE KANSAS REPUBLICAN
9:30 P.M. PARTY AND THE KANSAS DAY CLUB.
EXHIBIT ARENA - RAMADA INN LOWER LEVEL

10:00 P.M. RAMADA - LIVE INTERVIEW - KSNT TV
10 P.M. NEWS - CONTACT: RICK BLOOM
913/582-4000

RON - TOPEKA RAMADA INN DOWNTOWN - 913/234-5400

SATURDAY, JANUARY 30

8:00 A.M. BREAKFAST - REPUBLICAN CHAIRMEN AND VICE
TO CHAIRMEN
9:30 A.M.

SENATOR STOP BY AT 8:15 OR 8:30 P.M.

9:30 A.M. MEET BRIEFLY WITH REPUBLICAN STATE SENATORS
TO (THEY WOULD LIKE TO MEET WITH YOU BRIEFLY
9:45 A.M. IN YOUR SUITE TO PERSONALLY CONVEY THEIR
APPRECIATION FOR ALL YOUR HELP IN THE
ELECTION).

9:45 A.M. PER YOUR NOTES - MEET BRIEFLY WITH
TO SENATOR BOB VANCUM, R-OVERLAND PARK,
10:00 A.M. TO DISCUSS CONCERNS FOR THE FUTURE OF
THE REPUBLICAN PARTY IN KANSAS.

10:00 A.M. OPTIONAL - STOP BY DISTRICT MEETINGS

10:45 A.M. LEAVE RAMADA INN FOR AIRPORT

DRIVER: LANCE LATHAM

11:00 A.M. LV. PHILIP BILLARD FOR RUSSELL

AIRCRAFT: BEECH BARON
TAIL NO.: 4203A
SEATS: 4
PILOT: MITCHELL MOSIMAN
CO-PILOT: BRAD SAUNDERS
FLIGHT TIME: 1 HR.

MANIFEST:

SENATOR DOLE
DAVE SPEARS
MIKE GLASSNER

NOON

AR. RUSSELL AIRPORT
AIRPORT MANAGER - 913/483-6311

CITY VAN WILL BE AT THE Airport

NOON
TO
4:15 P.M.

LUNCH-PRIVATE TIME WITH
FAMILY

4:25 P.M.

LV. RUSSELL FOR WICHITA
JABARA AIRPORT - MIDWEST CORPORATE AVIATION

AIRCRAFT: BEECH BARON
TAIL NO.: 4203A
SEATS: 4
PILOT: MITCHELL MOSIMAN
CO-PILOT: BRAD SAUNDERS
FLIGHT TIME: 44 MINS.
MANIFEST:

SENATOR DOLE
DAVE SPEARS
MIKE GLASSNER

5:00 P.M.

AR. JABARA AIRPORT
MIDWEST CORPORATE AVIATION
316/636-9700

MET BY: CATHIE YAGER

5:15 P.M.

AR. BEECH ACTIVITY CENTER
RECEPTION - QUIVERA COUNCIL OF BOY
SCOUTS - 75TH ANNIVERSARY

5:45 P.M.

PROGRAM BEGINS - SENATOR WILL SPEAK
AND PRESENT DISTINGUISHED EAGLE SCOUT
AWARD TO ROBERT GATES

ATTENDANCE: 400-500

6:15 P.M. LV. BEECH ACTIVITY CENTER FOR MIDWEST
CORPORATE AVIATION

DRIVER: CATHIE YAGER

6:30 P.M. LV. WICHITA FOR TOPEKA

AIRCRAFT: BEECH BARON
TAIL NO.: 4203A
SEATS: 4
PILOT: MITCHELL MOSIMAN
CO-PILOT: BRAD SAUNDERS
FLIGHT TIME: 50 MINS.

MANIFEST:

SENATOR DOLE
MIKE GLASSNER

7:20 P.M. AR. T.J. TERMINAL, TOPEKA

MET BY: LANCE LATHAM

7:35 P.M. AR. RAMADA INN
BANQUET WILL BEGIN (GRAND MARCH SHOULD BE
OVER) - SENATOR WILL BE SEATED AT THE HEAD
TABLE.

SENATOR SCHEDULE FOR BRIEF REMARKS

KEYNOTE: NEW NATIONAL GOP CHAIRMAN
OR
REP. BOB MILLER, SPEAKER
KANSAS HOUSE OF REPRESENTATIVES
SEN. BUD BURKE, PRESIDENT OF THE
SENATE

8:45 P.M. LV. RAMADA INN FOR AIRPORT

DRIVER: LANCE LATHAM

PAGE THREESaturday, January 30

9:00 PM Ar. Philip Billard Airport
T.J. Terminal
Topeka, Kansas
913/234-2602

9:00 PM Lv. Topeka

FLIGHT TIME: 2 hours
TIME CHANGE: +1 hour

MANIFEST: Senator Dole
Senator Kassebaum - TENTATIVE
Staff (???)

AIRCRAFT: Torchmark Hawker
TAIL NO.: N 6 TM
SEATS: 6

PILOT: Todd Drew
CO-PILOT: Kitty Dietzel

12:00 AM Ar. Washington National Airport
Signature Flight Support
703/549-8340

This document is from the collections at the Dole Archives, University of Kansas

<http://dolearchives.ku.edu>

1/25/93
9:15AM

NOTE:

Governor Finney reportedly announced at one of her cabinet meetings on Wednesday that she would be meeting with you next week to discuss layoffs.

So far she has not contacted the office. See page 52 of the speech.

January 27, 1993

MEMORANDUM TO THE REPUBLICAN LEADER

FROM: David Taylor *David*

SUBJECT: Information on J.R. Berg Petroleum Lecture
Friday, January 29th -- Wichita State University

Dave Spears and Diana will meet you at the airport and take you to the Fourth Financial Center in Wichita.

J.R. "Bob" Berg and Dan Merriam of the Kansas Geological Survey will meet you at the door and escort you to the Bank IV Auditorium. There will be photos taken before and during the event.

Event site -- Bank IV Auditorium.
Speech -- 4:00 to 5:00 p.m.
Introduced by Dan Merriam
Coffee and Cookies Reception -- 5:00 to 5:30 p.m.

Your speech is expected to last about 30 minutes. The audience will be comprised of 200 to 250 geologists, Wichita State faculty members, people from the Kansas oil and gas industry, and some state/local press.

The speech will be followed by 15 to 20 minutes of questions and answers. Dan Merriam will act as the moderator and has guaranteed that he would cut off all questions by 5:00 p.m.

Given this week's news stories, you will probably get a lot of questions about energy taxes, recent layoff announcements -- Sears, Beech and Boeing -- and gays in the military.

There will be a brief (30 minute) reception following the lecture. Warren Armstrong, President of Wichita State University; Brad Rine, President of the Kansas Geological Society; Skip Loper, Dean of the College; and John Griese (pronounced "GREEZ"), Head of the Wichita State Geology Department will attend.

Dave and Diana will depart with you at 5:30 p.m. and take you back to the airport.

A biography of J.R. "Bob" Berg is attached.

Attachment

John Robert Berg was honored on his retirement from Wichita State University in 1986 by his many colleagues, former students, and friends with the establishment of the J.R. Berg Distinguished Petroleum Lecture Series. Each year an outstanding person of interest to the petroleum industry is asked to present the lecture in cooperation with the Kansas Geological Society. This is the

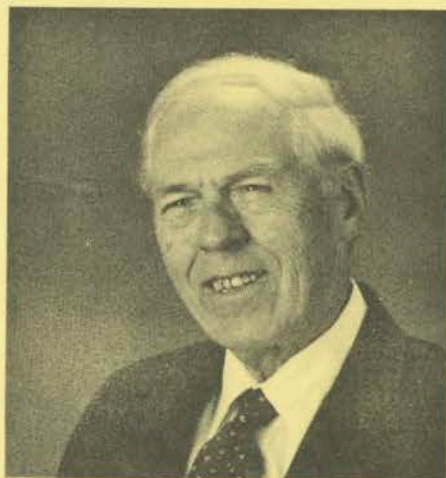
seventh lecture in the series.

Bob Berg was born of Swedish parents in Chicago, Illinois on 18 February 1915. He received his BS in Geology/Chemistry from Augustana College in 1938 and his MS and PhD from the State University of Iowa in 1940 and 1942. After working for E.I. duPont de Nemours Company and Shell Oil Company during WWII, he joined the faculty at then the University of Wichita in 1946. He was one of the first faculty members in the Department founded by Dr. W.A. VerWiebe.

On the retirement of Dr. VerWiebe, Berg served as the chairman of the Department of Geology from 1953 to 1963 and again from 1976 to 1981. He, at one time or another, taught every course in the expanding Department. From 1961 to 1969 he served as Dean of University College, and as such, served on and chaired many university committees. His service to WSU spanned four decades.

He has published many papers, served as a consultant to the Government of Brazil and industrial organizations, and was an expert witness in many lawsuits.

Bob Berg is a member of the AAPG, American Chemical Society, AIMME, SPE, AGU, SEG, NAGT (twice National President), Sigma Xi, and Sigma Gamma Epsilon; he is a fellow in the AAAS and GSA. He is active in the Kansas Geological Society (honorary member, 1989), Kansas Academy of Science (currently editor of the Transactions), and the Wichita Gem and Mineral Society (honorary member, 1950). He rose to the rank of Colonel with the U.S. Army Intelligence.



John Robert Berg was honored on his retirement from Wichita State University in 1986 by his many colleagues, former students, and friends with the establishment of the J.R. Berg Distinguished Petroleum Lecture Series. Each year an outstanding person of interest to the petroleum industry is asked to present the lecture in cooperation with the Kansas Geological Society. This is the

seventh lecture in the series.

Bob Berg was born of Swedish parents in Chicago, Illinois on 18 February 1915. He received his BS in Geology/Chemistry from Augustana College in 1938 and his MS and PhD from the State University of Iowa in 1940 and 1942. After working for E.I. duPont de Nemours Company and Shell Oil Company during WWII, he joined the faculty at then the University of Wichita in 1946. He was one of the first faculty members in the Department founded by Dr. W.A. VerWiebe.

On the retirement of Dr. VerWiebe, Berg served as the chairman of the Department of Geology from 1953 to 1963 and again from 1976 to 1981. He, at one time or another, taught every course in the expanding Department. From 1961 to 1969 he served as Dean of University College, and as such, served on and chaired many university committees. His service to WSU spaced four decades.

He has published many papers, served as a consultant to the Government of Brazil and industrial organizations, and was an expert witness in many lawsuits.

Bob Berg is a member of the AAPG, American Chemical Society, AIMME, SPE, AGU, SEG, NAGT (twice National President), Sigma Xi, and Sigma Gamma Epsilon; he is a fellow in the AAAS and GSA. He is active in the Kansas Geological Society (honorary member, 1989), Kansas Academy of Science (currently editor of the Transactions), and the Wichita Gem and Mineral Society (honorary member, 1950). He rose to the rank of Colonel with the U.S. Army Intelligence.

THE WICHITA STATE UNIVERSITY
DEPARTMENT OF GEOLOGY

in cooperation with

THE KANSAS GEOLOGICAL SOCIETY

present the 7th Annual

J.R. BERG DISTINGUISHED PETROLEUM LECTURE

*The First 100 Days of the Clinton Administration
Prospects for 1993*

by

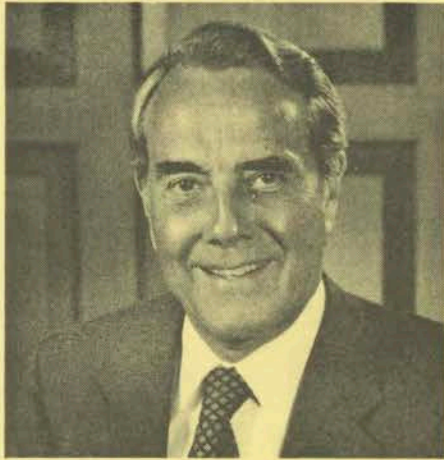
The Honorable Robert Dole

U.S. Senator from Kansas
Washington, D.C.



4:00 pm, Friday
29 January 1993

Fourth Financial Center
Wichita, Kansas



Bob Dole, senior U.S. Senator for Kansas, is recognized as one of America's towering political figures. He has a distinguished record of public service that spans four decades.

A decorated and wounded combat veteran of World War II, Bob Dole was born and raised on the plains of western Kansas. This tough, common-sense conservative from America's heartland has experience few can match. He has been the Senate Majority Leader, Chairman

of the Senate Finance Committee, a two-time candidate for President, his party's nominee for Vice-President, a member of the House of Representatives, Chairman of the Republican Party, a state legislator, and a county attorney.

Bob Dole attended several universities and received his AB degree from Washburn Municipal University in Topeka in 1952; the same year he completed his LLB. In 1969 he was granted a LLD (hon.) from Washburn. He served in the Kansas House of Representatives, Russell County Attorney, member of the 87th to 90th Congresses and was elected to the U.S. Senate in 1968. He has served the Republican National Party in many capacities and is a member of many professional and service organizations.

Currently in his fifth term as the Senate Republican Leader, Bob Dole was President Bush's *point man* on Capitol Hill, a job the Kansas Republican handled so effectively, President Bush said, "I count my blessings that he's Leader in the Senate for our party. He's been a great Republican Leader, as great as any in the past."

As one of only 15 Americans to serve as Senate Majority Leader, Senator Dole won praise nationwide, and according to the Congressional Quarterly, "...it is against his performance and ability to use power that Senate leaders in the foreseeable future will be judged."

During the second World War, Dole was a platoon leader in the legendary Tenth Mountain Division in Italy. In 1945 he was gravely wounded on the battlefield and was later twice decorated for heroic achievement. His decorations include two Purple Hearts and a Bronze Star with Oakleaf Cluster.

Senator Dole was born in Russell, Kansas, on 22 July 1923. He is married to Elizabeth Hanford Dole, President of the American Red Cross. Senator Dole also has a daughter, Robin, who resides in Washington, D.C.

ABSTRACT

THE FIRST 100 DAYS OF THE CLINTON ADMINISTRATION - PROSPECTS FOR 1993 -

Despite campaign rhetoric and press coverage to the contrary, the U.S. economy is showing real signs of life. A stronger economy and higher Federal deficits are forcing President Clinton to re-evaluate a number of his campaign promises -- deficit reduction has become a goal, not a commitment, the economic stimulus has shrunk from \$80 billion to \$20 billion, the list goes on and on.

Under these changing circumstances, what can we expect from the first 100 days of the Clinton Administration? When can we expect to see an economic stimulus package? How will President Clinton pay for his spending initiatives? Whose programs will be cut? Whose taxes will increase?

Between 1985 and 1990, more than 10,000 Kansas jobs in the oil and gas industry disappeared. Last year, Congress adopted the National Energy Policy Act. This legislation should help stabilize Kansas' highly volatile market by stimulating the development of domestic energy resources. What impact will this legislation have on domestic oil production, especially independent producers? What impact will it have on the natural gas industry? What signals have President Clinton and his new Energy Secretary Hazel O'Leary sent about their priorities for energy over the next four years?

January 29, 1993

M E M O R A N D U M

TO: SENATOR DOLE
FROM: NINA OVIEDO
SUBJECT: POSSIBLE TAX INCREASES

The following are some talking points on the possible "Clinton" tax increases.

GENERAL

- PRESIDENT CLINTON MADE A LOT OF PROMISES ABOUT REDUCING THE DEFICIT. AND HE ALSO MADE A FEW PROMISES REGARDING NEW SPENDING PROGRAMS AND A MIDDLE CLASS TAX CUT.
- BUT REALITY IS SETTING IN, AND AS THE PRESIDENT SAID IN HIS INAUGURAL ADDRESS, HE REALIZES THAT HE CAN'T FULFILL THOSE PROMISES WITHOUT MAKING SOME VERY TOUGH, AND VERY PAINFUL DECISIONS.
- NO DOUBT THAT INCREASING TAXES -- ENOUGH TO REDUCE THE DEFICIT AND FINANCE HIS PROMISED SPENDING INCREASES -- WILL BE VERY PAINFUL, FOR HIM AND CONGRESS.

PERSONAL INCOME TAX

- PRESIDENT CLINTON PROMISED TO "LOWER THE TAX BURDEN ON MIDDLE CLASS AMERICANS BY FORCING THE RICH TO PAY THEIR FAIR SHARE."
- BY ALL ACCOUNTS IT LOOKS LIKE THE TOP INDIVIDUAL TAX RATE WILL CLIMB TO AT LEAST 36% AND MILLIONAIRES WILL FACE A SURTAX.
- THE CLINTON ADMINISTRATION MAY WANT YOU TO THINK THAT A TAX INCREASE WILL FORCE THE RICH TO "PAY THEIR FAIR SHARE" BUT THE INCREASE WOULD HIT TAXPAYERS WITH UNINCORPORATED BUSINESSES -- SOLE PROPRIETORS, PARTNERSHIPS, S CORPORATIONS -- AMERICAN'S SMALL BUSINESSES.
- INSTEAD OF BUYING NEW EQUIPMENT OR CREATING NEW JOBS, THESE BUSINESS OWNERS WILL PAY MORE TAXES.
- AT LEAST 60 PERCENT OF ALL JOBS CREATED ANNUALLY ARE CREATED BY SMALL BUSINESSES.

CORPORATE INCOME TAXES

- NOT MUCH HAS BEEN SAID ABOUT INCREASING THE CORPORATE RATE. BUT DON'T HOLD YOUR BREATH. IT'S HARD TO IMAGINE AN INDIVIDUAL RATE INCREASE WITHOUT A CORPORATE INCREASE.
- I UNDERSTAND THAT JUST THIS PAST WEEK, CHAIRMAN MOYNIHAN HAS SAID IT'S INEVITABLE.
- I WONDER WHAT AN INCREASE WOULD DO TO OUR COMPETITIVENESS?, JOBS?, GROWTH?

ESTATE TAXES

- I AM PARTICULARLY CONCERNED OVER THE TALK OF INCREASING CERTAIN ESTATE TAX PROVISIONS. ONE SUGGESTION, ORIGINALLY MADE BY THE DEMOCRATS TO PAY FOR A HEALTH CARE BILL, WOULD REDUCE THE CURRENT ESTATE TAX EXEMPTION OF \$600,000 TO \$200,000.
- THIS PROPOSAL SAYS THAT YOU CAN PASS ON \$200,000 TO YOUR CHILDREN WITHOUT INVOLVING UNCLE SAM. IT SOUNDS LIKE A LOT OF MONEY. BUT, LET'S THINK ABOUT IT.
- THERE ARE CLOSE TO 2 MILLION FAMILY FARMS IN THIS COUNTRY WITH AN AVERAGE VALUE OF \$252,000. THAT PRETTY MUCH TAKES CARE OF THE EXEMPTION.
- AND IT'S NOT JUST FARMERS. WHAT ABOUT LANDLORDS? FOR INSTANCE, IN KANSAS, THE VALUE OF LAND RENTED BY FARMERS AVERAGES OVER \$400,000. THAT MEANS MANY LANDLORDS LIVING IN THE CITY HAVE A SIZEABLE INTEREST IN HOW ESTATE TAXES WILL AFFECT THE VALUE OF THAT LAND.
- SMALL BUSINESSES AND EVEN HOME OWNERS WOULD BE HIT. THE MEDIAN PRICE OF A HOME IN THE U.S. IS ABOUT \$104,000. THAT GET'S YOU HALF-WAY THERE WITHOUT EVEN TRYING.
- WE CANNOT PENALIZE FAMILIES IN THIS MANNER.

ENERGY/CONSUMPTION TAXES

- THERE'S LOTS OF TALK ABOUT BROAD BASE ENERGY TAXES/ CONSUMPTION TAXES: GASOLINE TAXES, CARBON TAXES, OIL IMPORT FEES AND THE VAT.
- I DON'T NEED TO TELL YOU, BUT THESE ARE HARD DECISIONS. WE'RE NOT A SMALL COUNTRY -- THESE TAXES HIT DIFFERENTLY IN EACH REGION OF THE COUNTRY.
- TAKE THE GAS TAX. I UNDERSTAND THAT THE CHAIRMAN MOYNIHAN IS "WELL DISPOSED" TOWARDS A 25 CENT TAX INCREASE. LET'S

- SEE WHY...NEW YORKERS CONSUME ANNUALLY SOME 315 GALLONS PER CAPITA. IN KANSAS, WE CONSUME 462 GALLONS PER PERSON. THAT MEANS AT FOR A 10 CENT TAX INCREASE, NEW YORKERS WOULD PAY \$31.50 WHILE KANSANS WOULD PAY \$46.2. IN WYOMING, THEY WOULD PAY \$60 -- THE TAX IS REGIONALLY UNFAIR.
- BUT, IF YOU LOOK AT CARBON TAXES, BASICALLY A TAX ON COAL, KANSAS HAS VERY LITTLE COAL PRODUCTION AND RANKS 29TH IN COAL CONSUMPTION. MAYBE WE WOULDN'T SCREAM AS LOUDLY ABOUT THIS TAX AS SAY WEST VIRGINIANS.
 - AS YOU MAY KNOW, ENERGY CHAIRMAN JOHNSTON HAS SPONSORED LEGISLATION CALLING FOR AN OIL IMPORT FEE. THE FEE COULD DO A NUMBER OF POSITIVE THINGS, BUT THERE ARE IMPORTANT TRADE IMPLICATIONS TO CONSIDER.
 - AN OIL IMPORT FEE COULD RAISE SIGNIFICANT REVENUES -- AS MUCH AS \$35 BILLION OVER THREE YEARS FOR THE PROPOSED LEGISLATION -- AND IT WOULD BE QUITE FAVORABLE TO OUR DOMESTIC PRODUCERS -- WHO HAVE TAKEN IT ON THE CHIN FOR SO LONG.
 - WHILE GATT WILL PROBABLY ARGUE THAT AN OIL IMPORT FEE IS ILLEGAL, WE MAY BE ABLE TO DEFEND SUCH A FEE ON THE GROUNDS THAT IT IS VITAL TO OUR NATIONAL SECURITY INTERESTS.
 - WE WOULD CERTAINLY BE CRITICIZED BY OUR TRADING PARTNERS FOR SPEAKING OUT OF BOTH SIDES OF OUR MOUTHS. HERE WE'RE TRYING TO CONVINCE OUR PARTNERS TO LOWER THEIR TRADING BARRIERS WHILE WE WOULD PUT ONE UP OURSELVES.
 - THERE'S MORE AND MORE TALK ABOUT A VAT AND MAYBE IT'S SOMETHING THAT SHOULD BE CONSIDERED BUT, IT IS VIEWED AS A EXTRA PAINFUL POLITICAL DILEMMA AND WOULD APPEAR TO TAKE SOME TIME BEFORE A PROPOSAL IS FULLY DEVELOPED, DEBATED AND LEGISLATED. I DO KNOW THAT MEMBERS ON BOTH SIDE OF THE AISLE ARE LOOKING INTO A VAT WITH CONSIDERABLE MORE INTEREST THAN BEFORE. [SENATORS DANFORTH AND BOREN SEEM TO HAVE TAKEN A LEAD ON THE ISSUE.]
 - IT MAY BE THAT THE ADMINISTRATION WILL GO FORWARD WITH A BROAD BASED ENERGY TAX OR SOME OTHER CONSUMPTION TAX -- BUT IT IS MY HOPE THAT THE PRESIDENT LOOKS HARD AT THE EFFECTS ON MANUFACTURING COSTS, CONSUMER PRICES, EXPORTS ... AND SUCH, BEFORE ENACTING LEGISLATION.

January 27, 1993

M E M O R A N D U M

TO: SENATOR DOLE
FROM: NINA OVIEDO *Nina*
SUBJECT: POSSIBLE TAX INCREASES

The following are some talking points on the possible "Clinton" tax increases.

GENERAL

- PRESIDENT CLINTON MADE A LOT OF PROMISES ABOUT REDUCING THE DEFICIT. AND HE ALSO MADE A FEW PROMISES REGARDING NEW SPENDING PROGRAMS AND A MIDDLE CLASS TAX CUT.
- BUT REALITY IS SETTING IN, AND AS THE PRESIDENT SAID IN HIS INAUGURAL ADDRESS, HE REALIZES THAT HE CAN'T FULFILL THOSE PROMISES WITHOUT MAKING SOME VERY TOUGH, AND VERY PAINFUL DECISIONS.
- NO DOUBT THAT INCREASING TAXES -- ENOUGH TO REDUCE THE DEFICIT AND FINANCE HIS PROMISED SPENDING INCREASES -- WILL BE VERY PAINFUL, FOR HIM AND CONGRESS.

PERSONAL INCOME TAX

- PRESIDENT CLINTON PROMISED TO "LOWER THE TAX BURDEN ON MIDDLE CLASS AMERICANS BY FORCING THE RICH TO PAY THEIR FAIR SHARE."
- BY ALL ACCOUNTS IT LOOKS LIKE THE TOP INDIVIDUAL TAX RATE WILL CLIMB TO AT LEAST 36% AND MILLIONAIRES WILL FACE A SURTAX.
- THE CLINTON ADMINISTRATION MAY WANT YOU TO THINK THAT A TAX INCREASE WILL FORCE THE RICH TO "PAY THEIR FAIR SHARE" BUT THE INCREASE WOULD HIT TAXPAYERS WITH UNINCORPORATED BUSINESSES -- SOLE PROPRIETORS, PARTNERSHIPS, S CORPORATIONS -- AMERICAN'S SMALL BUSINESSES.
- INSTEAD OF BUYING NEW EQUIPMENT OR CREATING NEW JOBS, THESE BUSINESS OWNERS WILL PAY MORE TAXES.
- AT LEAST 60 PERCENT OF ALL JOBS CREATED ANNUALLY ARE CREATED BY SMALL BUSINESSES.

CORPORATE INCOME TAXES

- NOT MUCH HAS BEEN SAID ABOUT INCREASING THE CORPORATE RATE. BUT DON'T HOLD YOUR BREATH. IT'S HARD TO IMAGINE AN INDIVIDUAL RATE INCREASE WITHOUT A CORPORATE INCREASE -- AT A MINIMUM AN INCREASE IN THE CORPORATE AMT.
- I WONDER WHAT AN INCREASE WOULD DO TO OUR COMPETITIVENESS?

ESTATE TAXES

- I AM PARTICULARLY CONCERNED OVER THE TALK OF INCREASING CERTAIN ESTATE TAX PROVISIONS. ONE SUGGESTION, ORIGINALLY MADE BY THE DEMOCRATS TO PAY FOR A HEALTH CARE BILL, WOULD REDUCE THE CURRENT ESTATE TAX EXEMPTION OF \$600,000 TO \$200,000.
- THIS PROPOSAL SAYS THAT YOU CAN PASS ON \$200,000 TO YOUR CHILDREN WITHOUT INVOLVING UNCLE SAM. IT SOUNDS LIKE A LOT OF MONEY. BUT, LET'S THINK ABOUT IT.
- THERE ARE CLOSE TO 2 MILLION FAMILY FARMS IN THIS COUNTRY WITH AN AVERAGE VALUE OF \$252,000. THAT PRETTY MUCH TAKES CARE OF THE EXEMPTION.
- AND IT'S NOT JUST FARMERS. WHAT ABOUT LANDLORDS? FOR INSTANCE, IN KANSAS, THE VALUE OF LAND RENTED BY FARMERS AVERAGES OVER \$400,000. THAT MEANS MANY LANDLORDS LIVING IN THE CITY HAVE A SIZEABLE INTEREST IN HOW ESTATE TAXES WILL AFFECT THE VALUE OF THAT LAND.
- SMALL BUSINESSES AND EVEN HOME OWNERS WOULD BE HIT. THE MEDIAN PRICE OF A HOME IN THE U.S. IS ABOUT \$104,000. THAT GET'S YOU HALF-WAY THERE WITHOUT EVEN TRYING.
- WE CANNOT PENALIZE FAMILIES IN THIS MANNER.

ENERGY/CONSUMPTION TAXES

- THERE'S LOTS OF TALK ABOUT CONSUMPTION TAXES: GASOLINE TAXES, CARBON TAXES, OIL IMPORT FEES AND THE VAT.
- WE'RE NOT A SMALL COUNTRY -- THESE TAXES HIT DIFFERENTLY IN EACH REGION OF THE COUNTRY.
- TAKE THE GAS TAX. NEW YORKERS CONSUME SOME 315 GALLONS PER CAPITA. IN KANSAS, WE CONSUME 462 GALLONS PER PERSON. THAT MEANS AT FOR A 10 CENT TAX INCREASE, NEW YORKERS WOULD PAY \$31.50 WHILE KANSANS WOULD PAY \$46.2. IN WYOMING, THEY WOULD PAY \$60. THE TAX IS REGIONALLY UNFAIR.

- BUT, IF YOU LOOK AT CARBON TAXES, BASICALLY A TAX ON COAL, KANSAS HAS VERY LITTLE COAL PRODUCTION AND RANKS 29TH IN COAL CONSUMPTION. MAYBE WE WOULDN'T SCREAM AS LOUDLY ABOUT THIS TAX AS SAY WEST VIRGINIANS.
- AN OIL IMPORT FEE COULD RAISE SIGNIFICANT REVENUES AND IT WOULD BE QUITE FAVORABLE TO OUR DOMESTIC PRODUCERS -- WHO HAVE TAKEN IT ON THE CHIN FOR SO LONG -- BUT PROBABLY GATT ILLEGAL. WE WOULD CERTAINLY BE CRITICIZED BY OUR TRADING PARTNERS FOR SPEAKING OUT OF BOTH SIDES OF OUR MOUTHS. HERE WE'RE TRYING TO CONVINCE OUR PARTNERS TO LOWER THEIR TRADING BARRIERS WHILE WE WOULD PUT ONE UP OURSELVES. [SENATORS JOHNSTON AND KRUEGER HAVE SPONSORED LEGISLATION CALLING FOR AN OIL IMPORT FEE.]
- THERE'S MORE AND MORE TALK ABOUT A VAT AND MAYBE IT'S SOMETHING THAT SHOULD BE CONSIDERED BUT, IT IS VIEWED AS A EXTRA PAINFUL POLITICAL DILEMMA AND WOULD APPEAR TO TAKE SOME TIME BEFORE A PROPOSAL IF FULLY DEVELOPED, DEBATED AND LEGISLATED. I DO KNOW THAT MEMBERS ON BOTH SIDE OF THE AISLE ARE LOOKING INTO A VAT WITH CONSIDERABLE MORE INTEREST THAN BEFORE. [SENATORS DANFORTH AND BOREN SEEM TO HAVE TAKEN A LEAD ON THE ISSUE.]
- IT MAY BE THAT THE ADMINISTRATION WILL GO FORWARD WITH A BROAD BASED ENERGY TAX OR SOME OTHER CONSUMPTION TAX -- BUT IT IS MY HOPE THAT THE PRESIDENT LOOKS HARD AT THE EFFECTS ON MANUFACTURING COSTS, CONSUMER PRICES, EXPORTS ... AND SUCH, BEFORE ENACTING LEGISLATION.

SENATOR BOB DOLE
J.R. BERG DISTINGUISHED
PETROLEUM LECTURE
WICHITA STATE UNIVERSITY
WICHITA, KANSAS
JANUARY 29, 1993

**THANK YOU VERY MUCH. IT
IS A PLEASURE TO RETURN TO
WICHITA STATE AND TO
PARTICIPATE IN THIS LECTURE
SERIES.**

**GEOLOGISTS PLAY AN
IMPORTANT ROLE IN THE
FORMULATION OF ENERGY
POLICY -- A POLICY WHICH IS**

**INSTRUMENTAL TO THE HEALTH
OF AMERICA'S ECONOMY. AND
IT'S THAT ECONOMY AND THAT
ENERGY POLICY I WANT TO
DISCUSS TODAY.**

**THERE'S AN OLD SAYING
THAT IF YOU LAID 100
ECONOMISTS END TO END,
THEY STILL WOULDN'T REACH A**

**CONCLUSION. MUCH OF THE
DISCUSSION DURING LAST
YEAR'S PRESIDENTIAL ELECTION
CENTERED AROUND WHETHER
OR NOT AMERICA WAS IN A
RECESSION. CANDIDATE
CLINTON AND THE NATIONAL
MEDIA INSISTED THAT WE WERE.
PRESIDENT BUSH SAID WE
WEREN'T.**

**THE GOOD NEWS FOR
PRESIDENT BUSH IS THAT HE
WAS RIGHT. THE BAD NEWS
WAS WE DIDN'T FIND THAT OUT
UNTIL AFTER THE ELECTION.**

**THE FACT IS, THAT THE
ECONOMY WAS IN MUCH
BETTER SHAPE THAN BILL
CLINTON OR THE PRESS**

**WANTED YOU TO BELIEVE. THE
ECONOMY IS NOW SHOWING
REAL SIGNS OF LIFE -- GROWTH
WAS UP 3.8 PERCENT IN THE
FOURTH
~~THIRD~~ QUARTER OF 1992.**

**INFLATION IS DOWN. RETAIL
SALES IN DECEMBER WERE THE
HIGHEST IN FOUR YEARS.
HOUSING STARTS ARE UP.
PERSONAL INCOME IS UP.**

**CONSUMER CONFIDENCE IS UP.
THE LIST GOES ON AND ON.**

**DESPITE THOSE FIGURES,
AND DESPITE THE RECORD
ECONOMIC EXPANSION OF THE
REAGAN-BUSH ERA, WE WERE
UNABLE TO TACKLE THE ONE
PROBLEM THAT THREATENS THE
FUTURE OF OUR CHILDREN AND**

**GRANDCHILDREN -- THE
NATIONAL DEFICIT.**

**AND IF THE LATEST
INDICATIONS ARE RIGHT, THAT
FOUR TRILLION DOLLAR
PROBLEM IS ONLY GOING TO
GET WORSE BEFORE IT GETS
BETTER.**

**CANDIDATE CLINTON'S
PROMISE TO CUT THE DEFICIT IN
HALF IN FOUR YEARS IS NOW
JUST A "GOAL". THE MIDDLE
CLASS TAX CUT HAS BEEN PUT
ON HOLD INDEFINITELY. THE
\$80 BILLION ECONOMIC
STIMULUS PACKAGE HAS
SHRUNK TO \$15 BILLION, AND
THE PRESIDENT'S OWN EXPERTS**

**ARE TELLING HIM THAT HIS
HEALTH CARE PLAN WILL NOT
HELP REDUCE THE DEFICIT. IN
FACT, DEMOCRATS ON CAPITOL
HILL HAVE ARGUED THAT THE
CHEAPEST HEALTH CARE
REFORM OPTION COULD COST
AS MUCH AS \$30 BILLION IN THE
FIRST YEAR.**

**ADDITIONALLY, BILL
CLINTON MADE A LOT OF
PROMISES TO A LOT OF PEOPLE.
HIGHER SPENDING ON
EDUCATION, TRAINING, AND
INFRASTRUCTURE SOUND
GOOD, BUT IT'S WORTH ASKING
WHERE HE IS GOING TO GET
THE MONEY TO PAY FOR THEM.**

**DURING HIS CONFIRMATION
HEARINGS, CLINTON'S NEW
BUDGET DIRECTOR, LEON
PANETTA, SUGGESTED THAT THE
PRESIDENT'S ECONOMIC PLAN
WOULD CONTAIN TWO DOLLARS
IN SPENDING CUTS FOR EVERY
DOLLAR OF HIGHER TAXES. I'LL
BE INTERESTED TO SEE WHAT**

**SPENDING CUTS PRESIDENT
CLINTON COMES UP WITH.**

**AT THIS POINT, I EXPECT
THE LION'S SHARE TO COME
FROM DEFENSE. CLINTON WILL
NO DOUBT CUT DEFENSE
BELOW THE LEVELS SUGGESTED
BY DICK CHENEY AND
PRESIDENT BUSH. BUT, THAT**

**MEANS CUTTING HIGH-PAYING
DEFENSE-RELATED JOBS.**

**IN TERMS OF DEFICIT
REDUCTION, I DON'T THINK
PRESIDENT CLINTON WILL BE
ABLE TO CUT DOMESTIC
SPENDING. IN FACT, I EXPECT
DOMESTIC SPENDING
INCREASES TO MORE THAN**

**OFFSET ANY CUTS IN DEFENSE.
SINCE PRESIDENT CLINTON
SEEMS RELUCTANT TO TACKLE
ENTITLEMENT SPENDING, WE
ARE PROBABLY LOOKING AT A
MAJOR TAX INCREASE.**

**FORMER SENATOR RUSSELL
LONG USED TO SAY THAT WHEN
IT CAME TO TAXES, EVERYONE'S**

**ATTITUDE WAS "DON'T TAX YOU,
DON'T TAX ME, TAX THAT
FELLOW BEHIND THAT TREE."**

**WELL, IN 1993, ALL THOSE
INVOLVED IN THE ENERGY
INDUSTRY MAY BE THAT FELLOW
BEHIND THE TREE.**

**LAST SUNDAY, TREASURY
SECRETARY LLOYD BENTSEN**

**SUGGESTED THAT A BROAD-
BASED ENERGY CONSUMPTION
TAX MAY BE THE LEADING
OPTION TO FINANCE PRESIDENT
CLINTON'S ECONOMIC PLAN.**

**THE REVELATION THAT THE
ENERGY INDUSTRY MAY BE THE
FIRST ONE TO WALK THE TAX
PLANK, IS YET ANOTHER BLOW**

**TO AN INDUSTRY WHICH HAS
FACED SOME VERY
CHALLENGING TIMES.**

**MANY OF YOU REMEMBER
THE OIL EMBARGOES OF THE
1970S AND THE CATASTROPHIC
IMPACT THEY HAD ON THE
ECONOMY. OVER THE PAST
TWELVE YEARS, THE KANSAS**

**OIL AND GAS INDUSTRY HAS
BEEN THROUGH THE EXTREMES
OF A VOLATILE WORLD MARKET
THAT RELIES TOO HEAVILY ON
THE MIDDLE EAST.**

**BETWEEN 1979 AND 1985,
THE KANSAS OIL AND GAS
INDUSTRY GREW FASTER THAN
ANY OTHER SECTOR OF THE**

**STATE'S ECONOMY --
EMPLOYMENT INCREASED BY
MORE THAN 69 PERCENT AND
INCOMES ROSE MORE THAN 80
PERCENT. BETWEEN 1985 AND
1990, MORE THAN 10,000 JOBS
IN THE OIL AND GAS INDUSTRY
DISAPPEARED IN KANSAS
ALONE. OVER THAT SAME
PERIOD, MORE AMERICAN JOBS**

**WERE LOST IN THE OIL AND GAS
INDUSTRY NATIONWIDE -- SOME
450,000 JOBS -- THAN IN THE
AUTOMOBILE, TEXTILE, AND
STEEL INDUSTRIES COMBINED.
NO OTHER SECTOR IN THE
STATE, OR FOR THAT MATTER
THE ENTIRE REGION, HAS BEEN
THROUGH SUCH EXTREMES.**

**WE MUST DO EVERYTHING
WE CAN TO PROTECT AND
EXPAND OUR DOMESTIC
PETROLEUM INDUSTRY --
PARTICULARLY THE SMALL
STRIPPER WELL PRODUCERS
WHO HAVE BEEN FACED WITH
THE PROSPECT OF ABANDONING
THEIR PRODUCING WELLS AT AN
ALARMING RATE. THE 45,000**

**STRIPPER WELLS IN KANSAS
PRODUCE 55 MILLION BARRELS
OF OIL EACH YEAR. OVER THE
PAST THREE YEARS, 5,000
PRODUCING KANSAS WELLS
WERE ABANDONED. THAT IS
PRODUCTION THAT MAY BE
LOST FOREVER.**

**THE ADOPTION OF THE
NATIONAL ENERGY POLICY ACT
OF 1992 WITH ITS FOCUS OF
DEVELOPMENT OF OUR
DOMESITC ENERGY RESOURCES
WAS A STEP IN THE RIGHT
DIRECTION. IMPLEMENTATION
OF THIS NEW LAW SHOULD HELP
STABILIZE THE OIL AND GAS
MARKET HERE IN KANSAS -- AND**

**THROUGHOUT THE UNITED
STATES.**

**MOST PEOPLE CONSIDER
ALTERNATIVE MINIMUM TAX
RELIEF FOR INDEPENDENT
PRODUCERS THE CENTERPIECE
OF THE NATIONAL ENERGY
POLICY ACT. I AGREE. THE OIL
AND GAS EXTRACTION**

**INDUSTRY HAS THE HIGHEST
EFFECTIVE TAX RATE OF ANY
INDUSTRY IN THE COUNTRY--
OVER 70 PERCENT. THIS HIGH
TAX RATE, COUPLED WITH THE
FACT THAT OIL AND GAS
EXTRACTION IS A RISKY,
CAPITAL INTENSIVE VENTURE
HAS LED TO THE DEVASTATION
OF OUR DOMESTIC INDUSTRY,**

**INCREASING IMPORTS AND OUR
TRADE DEFICIT. IN MY VIEW,
AMT RELIEF IS NOT ONLY FAIR,
IT IS ABSOLUTELY ESSENTIAL TO
THE SURVIVAL OF THE
INDUSTRY.**

**I SPONSORED TWO
AMENDMENTS WHICH WERE
INCLUDED IN THE ENERGY BILL**

**WHICH SHOULD HELP INCREASE
THE VIABILITY OF OUR
DOMESTIC OIL INDUSTRY. I
HOPE THAT PRESIDENT CLINTON
WILL EXERCISE HIS NEW
AUTHORITY TO ACQUIRE OIL
FROM DOMESTIC STRIPPER
WELL PROPERTIES FOR
STORAGE IN THE STRATEGIC
PETROLEUM RESERVE. AND,**

**THE NEW MIDCONTINENT
ENERGY RESEARCH CENTER--
ENVISIONED FOR THE
UNIVERSITY OF KANSAS ENERGY
RESEARCH CENTER--SHOULD
HELP IN THE DEVELOPMENT OF
IMPROVED RESERVOIR
MANAGEMENT AND PETROLEUM
RECOVERY TECHNIQUES, AND
PROVIDE DRILLERS WITH NEW**

**TECHNOLOGIES AND DIRECT
RESEARCH SUPPORT.**

**THINGS ARE BEGINNING TO
IMPROVE FOR THE NATURAL
GAS INDUSTRY AS WELL.**

**REMAINING PRICE CONTROLS
WERE FINALLY LIFTED ON
JANUARY FIRST. RECENTLY
ENACTED INCENTIVES FOR**

**NATURAL GAS VEHICLES AND
COMPRESSED GAS FOR
UTILITIES OFFER NEW, EXCITING
OPPORTUNITIES FOR NATURAL
GAS PRODUCERS. AT LEAST
79,000 MEGAWATTS OF NEW
ELECTRIC GENERATING PLANTS
WILL BE COMPLETED OVER THE
NEXT DECADE. FIFTY-TWO
PERCENT OF THAT PLANNED**

**CAPACITY WILL BE FIRED BY
NATURAL GAS. THE TOTAL
ADDITIONAL GAS NEEDED FOR
ELECTRICAL GENERATION
COULD GROW TO 5.4 TRILLION
CUBIC FEET BY THE TURN OF
THE CENTURY. THAT IS MORE
THAN DOUBLE THE DEMAND FOR
ELECTRIC GENERATION IN 1991.**

**HERE IN KANSAS, THE
ENORMOUS NATURAL GAS
RESERVES IN THE HUGOTON
FIELD CAN BECOME A
COMPETITIVE, PRIMARY SOURCE
OF NATURAL GAS FOR CHICAGO,
MINNEAPOLIS AND DETROIT--
AND NOT JUST A MIXER USED
TO LOWER THE COST OF GAS
FROM OTHER SOURCES.**

**FOR MOST INDEPENDENT
OIL AND GAS PRODUCERS, THE
PROSPECTS FOR 1993--ABSENT
A POSSIBLE TAX INCREASE--ARE
GOOD.**

**DEMAND FOR OIL AND GAS
IS INCREASING. A RECENT
STUDY BY DR. BILL FISHER AND
HIS ASSOCIATES AT THE**

**UNIVERSITY OF TEXAS,
TOGETHER WITH THE NATIONAL
INSTITUTE FOR PETROLEUM AND
ENERGY, AND 17 EXPERTS FROM
AROUND THE COUNTRY,
ESTIMATED THAT RECOVERABLE
DOMESTIC OIL RESOURCES ARE
FOUR TO EIGHT TIMES GREATER
THAN PREVIOUSLY ESTIMATED.**

**THE REPORT ESTIMATES THAT
UP TO 90 BILLION BARRELS OF
FUTURE PRODUCTION WILL
COME FROM CURRENTLY
UNDISCOVERED RESOURCES.**

**IN ADDITION TO THE 160
TRILLION CUBIC FEET OF
PROVEN NATURAL GAS**

**RESERVES, THE NATURAL GAS
COMMITTEE OF THE NATIONAL
PETROLEUM COUNCIL
ESTIMATES THAT THE UNITED
STATES CONTAINS BETWEEN
1,040 AND 1,590 TRILLION CUBIC
FEET OF POTENTIAL NEW
RESERVES.**

**OUTSIDE THE TAX AREA, I
DO NOT EXPECT TO SEE MUCH
IN THE WAY OF ENERGY
LEGISLATION THIS YEAR--
ALTHOUGH WE'LL CERTAINLY
HAVE TO KEEP AN EYE ON OUR
NEW VICE PRESIDENT, AND THE
BUREAUCRATS WHO MIGHT
BURY ENERGY PRODUCERS IN**

AN AVALANCHE OF REGULATIONS AND RED TAPE.

**ACCORDING TO EPA, THE
ENVIRONMENTAL COSTS TO THE
PETROLEUM INDUSTRY ARE
EXPECTED TO GROW TO MORE
THAN \$20 BILLION PER YEAR IN
THE 1990S--AND THAT IS UNDER
PLANS THAT ARE ALREADY IN**

**PLACE. THE NATIONAL
PETROLEUM COUNCIL HAS
CALCULATED THAT THE
POTENTIAL ENVIRONMENTAL
COMPLIANCE COST FOR FUTURE
GAS PRODUCTION WILL TOP \$30
BILLION AND REDUCE
PRODUCTION BY 10 PERCENT
PER YEAR.**

**IN CLOSING, I WANT TO
RETURN FOR JUST A MINUTE TO
THE KANSAS ECONOMY. BY
MOST ECONOMIC MEASURES,
KANSAS OUTPERFORMED THE
COUNTRY LAST YEAR. IN FACT,
ACCORDING TO THE LABOR
DEPARTMENT, KANSAS RANKED
EIGHTH AMONG THE STATES IN
EMPLOYMENT GROWTH**

**BETWEEN NOVEMBER 1991 AND
NOVEMBER 1992.**

**BUT, THERE ARE STILL
PROBLEMS IN KANSAS. IN THE
PAST WEEK, SEARS ANNOUNCED
ITS DECISION TO RESTRUCTURE
ITS ORGANIZATION AND SHUT
DOWN ITS HIGH-TECH
TELECATALOG OPERATION. AS**

**A RESULT, MORE THAN 1,700
KANSANS MAY LOSE THEIR
JOBS BY YEAR'S END. AS PART
OF ITS NATIONAL
RESTRUCTURING, BOEING
ANNOUNCED PLANS TO CUT
AIRCRAFT PRODUCTION BY 35
PERCENT--A DECISION THAT
COULD IMPACT THOUSANDS OF
WORKERS HERE IN WICHITA.**

**BEECH HAS ANNOUNCED PLANS
TO LAY OFF 325 WORKERS
STATEWIDE.**

**THESE ARE GOOD JOBS
THAT ARE VANISHING--WE ARE
TALKING ABOUT MILLIONS OF
DOLLARS OF PAYROLL.**

**OVER THE PAST FEW
YEARS, KANSAS HAS LAGGED**

**BEHIND THE COUNTRY AND THE
GREAT PLAINS REGION IN
TERMS OF PER CAPITA INCOME
GROWTH. A RECENT
UNIVERSITY OF KANSAS STUDY
SUGGESTS THAT KANSAS' POOR
PERFORMANCE IN THIS AREA
MAY BE THE RESULT OF A
DECLINE IN PRODUCTIVITY.**

**BETWEEN 1985 AND 1990,
KANSAS DROPPED FROM THIRD
TO 30TH IN THE NATION IN
TERMS OF VALUE ADDED PER
DOLLAR OF MANUFACTURING
WAGES. WHEN COMPARED TO
THE OTHER STATES IN THE
REGION, KANSAS DROPPED
FROM FIRST TO LAST IN THIS
CATEGORY. OTHER**

**PRODUCTIVITY MEASURES
SHOW A SIMILAR DECLINE. THE
STUDY SUGGESTS THAT
DECLINING PRODUCTIVITY MAY
BE THE RESULT OF A SHIFT IN
MANUFACTURING EMPLOYMENT
TO LOWER WAGE, LOWER
VALUE-ADDED INDUSTRIES.**

**IN THE LONG RUN, WE NEED
TO TAKE STEPS TO IMPROVE
WORKER PRODUCTIVITY IN
KANSAS--AND ACROSS THE
COUNTRY. IF WE DON'T, WE
WILL LOSE OUR ABILITY TO
ATTRACT THE INTERNATIONALLY
COMPETITIVE, HIGH-WAGE
INDUSTRIES THAT CAN BRING
GOOD, NEW JOBS TO KANSAS.**

**THAT MEANS FEDERAL,
STATE AND LOCAL
GOVERNMENTS MUST WORK
TOGETHER TO PROVIDE
INCENTIVES FOR CAPITAL
IMPROVEMENTS, THE
APPLICATION OF NEW
TECHNOLOGY, AND A GREATER
EMPHASIS ON QUALITY
PRODUCTS. THAT MEANS**

**INVESTING IN OUR
INFRASTRUCTURE TO IMPROVE
TRANSPORTATION AND
COMMUNICATIONS. THAT
MEANS PREPARING KANSAS
HIGH SCHOOL GRADUATES FOR
THE CHALLENGE OF COLLEGE
OR ADDITIONAL TECHNICAL
TRAINING. AND, THAT MEANS
PUTTING GREATER EMPHASIS**

**ON WORKER RETRAINING AND
ADULT EDUCATION.**

**WORKING TOGETHER,
CORPORATE AMERICA AND
GOVERNMENT NEED TO PLACE
LESS EMPHASIS ON QUARTERLY
EARNINGS AND MORE EMPHASIS
ON OUR ABILITY TO COMPETE IN
THE LONG RUN.**

**THE EVENTS OF THE PAST
WEEK SHOW THAT ACTION IS
CRITICAL. I UNDERSTAND THAT
GOVERNOR FINNEY MAY BE
COMING TO WASHINGTON
EARLY NEXT WEEK TO DISCUSS
THE SITUATION. I LOOK
FORWARD TO MEETING WITH
HER.**

**THE SKIPPER OF AMERICA
THREE--THE YACHT THAT WON
THE AMERICA'S CUP LAST YEAR--
-IS BILL KOCH, A KANSAN. AND
NOT TOO LONG AGO BILL
WROTE A LETTER TO ME, AND I
WANT TO READ A PORTION OF IT
TO YOU.**

**BILL WROTE: "INCLUDED IN
MY DREAM OF WINNING THE
AMERICA'S CUP WAS TO PROVE-
-THAT BY EMPHASIZING
AMERICAN TECHNOLOGY AND
TEAMWORK, AND BY APPLYING
AMERICAN MANAGEMENT
TECHNIQUES...YOU CAN
COMPETE WITH THE VERY BEST
IN THE WORLD AND WIN. "**

**I HOPE YOU AGREE THIS IS
A PHILOSOPHY WHICH CAN BE
APPLIED NOT ONLY TO YACHT
RACING, BUT TO SUCCEEDING IN
THE GLOBAL VILLAGE IN WHICH
WE ALL NOW LIVE.**

**AGAIN, MY THANKS FOR
INVITING ME HERE TODAY. I
LOOK FORWARD TO WORKING**

**WITH YOU IN THE CHALLENGING
DAYS THAT AWAIT KANSAS AND
AMERICA.**