

RESOLUTION ON EDUCATION

WHEREAS at present only 42 percent of Louisiana's funds for public education are allocated to strictly academic areas such as teacher salaries, instructional materials, and university research; and

WHEREAS Louisiana now ranks at or near the bottom of the states in education; and

WHEREAS the poor quality of public education in Louisiana constitutes perhaps the most serious impediment to business and jobs which might locate here; and

WHEREAS political figures in Louisiana have long paid lip-service to the need for making education a priority;

NOW THEREFORE BE IT RESOLVED that the Republican Party of Louisiana go on record as favoring a shift in the percentage allocations of funds within public education, from administrative and other nonacademic areas to academic areas including teacher salaries, instructional materials, and university research.

RESOLUTION SUPPORTING THE PARTY'S TRADITIONAL STAND ON FAMILY VALUES

The Republican Party of Louisiana supports the position that no publicly funded course in sex education may counsel or refer for abortion.

RESOLUTION

BE IT RESOLVED that the Republican Party of Louisiana is seriously concerned about the economic problems of Louisiana and urges the following to help in the creation of jobs, opportunity and economic growth, and to help make Louisiana a more attractive state to live in.

1. Emphasis on improving education at all levels.
2. Creation of an attractive political climate and erasing our image as a state of corruption.
3. Passage of legislation, including reform of unemployment compensation laws, in order to make Louisiana an attractive state for relocation of industries.
4. Strict enforcement of laws and rigorous prosecution of criminals, with special emphasis on the illegal drug trade, in order to insure the safety and security of all citizens.

RESOLUTION

WHEREAS, drug abuse has become a national political issue;
and

WHEREAS, drug abuse threatens our children's lives, disrupt
our schools, shatter families; and

WHEREAS, drug-related crimes overwhelm our courts, social
service agencies and police; and

WHEREAS, President Reagan, Vice President Bush, and their
top aides have voluntarily taken drug tests; and

WHEREAS, Federal officials as well as government employees
should set the example for state and local government and the
private sector to embrace a drug-free society; and

WHEREAS, testing for controlled substances is setting an
example that we as American citizens want a drug-free work place
and society.

THEREFORE, BE IT RESOLVED that the Republican Party of
Louisiana hereby declares its support for President and Mrs.
Reagan in their efforts to set an example and lead the way toward
their goal of a drug-free work place through the testing of
federal employees and officials and state and local government
officials.

BE IT FURTHER RESOLVED that the quest for drugfree schools
is a central feature of the First Family's overall war on drugs
in America and we hereby urge all Republicans to join a national
effort to achieve a society free of drug abuse.

RESOLUTION

WHEREAS all studies done on the tax code of Louisiana have
declared that code archaic, anti-business, and anti-growth; and

WHEREAS the attraction of new business and industry to
Louisiana is a better means of increasing state revenues than
raising taxes, while enhancing employment opportunities;

THEREFORE BE IT RESOLVED that the Republican Party of
Louisiana calls for a complete revision of Louisiana's tax code
to create an environment more conducive to the activities of
business and industry and thereby creating more jobs for the
people of Louisiana.

RESOLUTION

WHEREAS, the burgeoning bureaucracy in Louisiana state government is often unresponsive to the needs of the people and the subject of notable allegations of bribery and other corruption; and

WHEREAS, it is the belief of the Republican Party of Louisiana that local governments are the subject of greater scrutiny by the people and are more responsive to the needs of the people; and

WHEREAS, the problems of our state government will not be solved by granting to the state bureaucracy more tax dollars; and

WHEREAS, true reform of state government in Louisiana must include greater authority to parish and municipal governments.

THEREFORE, BE IT RESOLVED that if parish and municipal authorities have greater responsibility they should have a greater share of the taxing ability.

BE IT FURTHER RESOLVED that in order to prevent too great a tax burden on the taxpayers of Louisiana that in increasing the tax authority of local governments, the state of Louisiana should not increase the taxing authority of the state government.

BE IT FURTHER RESOLVED that the Executive Director of the Louisiana Republican Party mail a copy of this Resolution to every Louisiana state Legislator, parish council or police jury member, city council member, school board member, sheriff, tax assessor and mayor requesting their support of this Resolution.

RESOLUTION

BE IT RESOLVED that the entire Republican Party of Louisiana come together in a massive volunteer effort to make the 1988 Republican National Convention in New Orleans the greatest Republican National Convention in history.

RESOLUTION

WHEREAS, free enterprise is based on the individual and that each person's ability, dignity, freedom, and responsibility must be honored and recognized; and

WHEREAS, free enterprise and the encouragement of individual initiative and incentive have given this nation an economic system second to none; and

WHEREAS, America has been a land of opportunity because America has been a land of learning and it has given us the most prosperous and dynamic society in the world; and

WHEREAS, parents have the primary right and responsibility for the education of their children regarding free enterprise; and states, localities, and private institutions have the primary responsibility for supporting that parental role; and

WHEREAS, the key to the success of educational reform lies in accountability for students, parents, educators, school boards and all governmental units and all must be held accountable in order to achieve excellence in education; and

WHEREAS, we believe the textbooks our children use should promote traditional family values, free enterprise and an objective and complete history of the United States and its role in world affairs.

THEREFORE, BE IT RESOLVED that the Republican Party of Louisiana hereby declares the development of an excellent educational system its top priority to prepare the youth of Louisiana for the challenges of the future.

BE IT FURTHER RESOLVED that legislation be introduced implementing the free enterprise pamphlet Why America is called "The Land of Opportunity" published by the National Federation of Republican Women into the Louisiana School curriculum.

RESOLUTION

WHEREAS, Swedish Diplomat Raoul Wallenberg was declared an honorary American citizen in 1981; and

WHEREAS, through great bravery and risk of his own life Raoul Wallenberg saved the lives of at least eighty thousand Jews during the Nazi occupation of Hungary; and

WHEREAS, Raoul Wallenberg was imprisoned by the Soviet Union in 1945; and

WHEREAS, recent evidence indicates that Raoul Wallenberg may still be alive in a Soviet prison.

THEREFORE, BE IT RESOLVED that the Republican Party of Louisiana encourage the United States Department of State to continue pressing the Soviet authorities for a candid and full accounting of the case of Raoul Wallenberg.

BE IT FURTHER RESOLVED that this Resolution be delivered to the Honorable Robert L. "Bob" Livingston, Member of Congress from the First District of Louisiana and Member of the House Permanent Select Committee on Intelligence, for presentation to the Secretary of State.

RESOLUTION

In light of the goals of the National Republican Party, as demonstrated by Project Outreach, BE IT RESOLVED that the Republican Party of Louisiana adopt, as a top priority, a program to increase black Republican voter registration throughout the state, and that this effort should be led by our outstanding Louisiana Republican Black Council and all local Republican Black Councils.

RESOLUTION

WHEREAS, Louisiana is a state rich in natural resources, including the Mississippi River, an important source of transportation and water supply, offering tremendous opportunities for commercial and industrial development; and

WHEREAS, the Mississippi River drains over one third of the entire United States, flowing 2,560 miles from Minnesota to the Gulf of Mexico, with tributaries from the Appalachian Mountains to the Rocky Mountains; and

WHEREAS, the industrial growth which vitally affects the economy of the River Region must be encouraged, public health is jeopardized when environmental concerns are ignored; and

WHEREAS, although more than one million people living in southeast Louisiana depend on the river for their water supply, significant quantities of pollutants were released into the Mississippi River last year; and

WHEREAS, the 1972 Federal Clean Water Act required "zero dumping" of industrial pollutants in the river by 1985, the State Department of Natural Resources continues to issue five-year permits to companies to discharge industrial waste; and

WHEREAS, those citizens concerned with the environment agree that standards set by the State Department of Natural Resources and the Federal Environmental Protection Agency for industrial discharges have been totally inadequate to protect the water quality of Louisiana.

THEREFORE BE IT RESOLVED that the Republican Party of Louisiana expresses its concern to the Federal Environmental Protection Agency and to the State Department of Natural Resources and requests that these agencies monitor discharges into the Mississippi River to prevent violations, to ensure correct reporting of discharges, and to demand compliance with the 1972 Federal Clean Water Act.

BE IT FURTHER RESOLVED that the Republican Party of Louisiana opposes the import of all hazardous wastes to be disposed of within the borders of Louisiana or in the State's territorial waters.

RESOLUTION

WHEREAS, the election code requires that there be at least one commissioner for each party when that party is represented by at least one local or municipal candidate; and

WHEREAS, there have been reported election abuses in precincts in which a political party is not represented by a local or municipal candidate; and

WHEREAS, each recognized political party having at least ten percent of the registered voters of the state should be allowed at least one commissioner in each precinct; and

WHEREAS, voters registered as "independent" are not classified as being affiliated with a recognized political party;

THEREFORE, BE IT RESOLVED that the Republican Party of Louisiana meeting in convention on April 11, 1987, reiterate our position that all voters are entitled to equal protection and that our system of free elections is foundational to our form of government.

BE IT FURTHER RESOLVED that the Republican Party of Louisiana support state legislation that would mandate that there be at least one commissioner of each recognized political party having at least ten percent of the registered voters, whether or not it is represented by a local or municipal candidate.

RESOLUTION

WHEREAS, the United States has no defense against incoming nuclear missiles, whether launched deliberately or by accident; and

WHEREAS, it is the primary responsibility of government to defend our nation against this most awesome of threats; and

WHEREAS, the shift in the strategic balance in favor of the Soviet Union has severely undermined the credibility of our deterrent, which is based on Mutual Assured Destruction and the use of offensive weapons; and

WHEREAS, technologies are now available to build a non-nuclear defense system to protect the United States against a nuclear attack; and

WHEREAS, the Soviet Union is proceeding rapidly with its own SDI-type defenses.

THEREFORE, BE IT RESOLVED by the State convention of the Louisiana Republican party assembled in Baton Rouge, April 11, 1987 that we urge Congress to vote for full funding for the Strategic Defense Initiative and that we urge the President to make an immediate decision to deploy SDI.

RESOLUTION

BE IT RESOLVED that we, the Republican Party of Louisiana oppose additional state sales tax as a revenue measure.

RESOLUTION

WHEREAS, the present state of economic affairs is of great concern to every citizen of Louisiana; and

WHEREAS, efforts should be made to reduce expenditures by the state; and

THEREFORE, BE IT RESOLVED that the Republican Party of Louisiana meeting in convention on April 11, 1987, reiterate our position that unnecessary spending should stop.

BE IT FURTHER RESOLVED that in the light of the worsening economic condition in the state of Louisiana, we the Republican Party of Louisiana support State Legislation that would support efforts to re-evaluate the election code of Louisiana in order to eliminate unnecessary spending.

RESOLUTION

WHEREAS, the elections held in 1987 involve local and state-wide positions; and

WHEREAS, a united effort by the Republican party is vital to the election of party candidates;

THEREFORE, BE IT RESOLVED that each parish candidate recruitment and endorsement committee aggressively and fairly seek Republican candidates for all local elections.

BE IT FURTHER RESOLVED that persons holding leadership positions in the Republican party wholeheartedly support local and statewide candidates endorsed by the Republican party.

RESOLUTION

SELECTION OF DELEGATES

- Whereas, The Louisiana Legislature has attempted to set major changes in the election of Louisiana delegates to National Conventions by enacting the Presidential Preference law, commonly referred "Super Tuesday", and
- Whereas, The United States Supreme Court in a recent case, *Tashjian vs. The Republican Party of Connecticut*, ruled that according to the United States Constitution State Political Parties have the right to determine their own method of electing delegates to their own National Convention, and
- Whereas, The Secretary of State wrote in the Guide to Louisiana 1984 Elections, March 1984, concerning the Presidential Preference Primary, "If there is.....no Presidential Preference Primary because of State budget constraints....the Parties devise another method for selecting delegates to their conventions, and
- Whereas, The cost of the Presidential Preference Primary in 1984 was reported to be approximately \$2,596,000.00. It is estimated by the Secretary of State's office that the cost of the 1988 Presidential Primary will be in excess of \$3,000,000.00. The lack of State funds is more critical now than in 1984.

Therefore Be It Resolved,

That the Republican Party of Louisiana calls upon the Louisiana Legislature to alter the Louisiana Presidential Primary law to recind the forced participation in "Super Tuesday", or

If participation in "Super Tuesday" is not recinded, the Louisiana Republican Party requests the Louisiana Legislature exempt it from participation; thereby, relieving it from the responsibility of the expenditure of money which is needed for essential programs.

BOB DOLE
TRAVEL SCHEDULE
RECESS SCHEDULE

STAFF: Glassner
CONTACTS: WALSH (h) 202/745-1083
Beeper: 202/259-9413
HARRISON 202/546-2354
Beeper: 202/259-9412

FINAL

FRIDAY APRIL 10, 1987

3:35pm DEPART for Washington/National airport/Butler

3:55pm ARRIVE Butler Aviation and proceed to
the departing aircraft

FBO: Butler Aviation

703/549-8340

4:15pm WHEELS-UP for Baton Rouge, LA

aircraft: Falcon 50

Tail number: N85A

pilots: Zane Parker, Charles Staley

Seats: 10 seats

Flight time: 2 hours 15 minutes

Manifest: Senator Dole, Glassner, Henson
Moore, Jay Stone

5:30pm ARRIVE Baton Rouge, LA and proceed to hotel

-1hr Baton Rouge Metropolitan Airport

FBO: Louisiana aircraft

Met by: Sara Cedarholm

504/356-1401

5:35pm DEPART for the Hilton Hotel - drive
time 15 minutes

The Hilton - Baton Rouge
5500 Hilton Avenue
Baton Rouge, Louisiana

5:50pm ARRIVE Hilton and proceed to meeting

504/924-5000

5:55pm- PRIVATE TIME

6:25pm

504/924-5000

page 2
BOB DOLE
TRAVEL SCHEDULE
LOUISIANA

FRIDAY, APRIL 10, 1987

6:30pm- ATTEND/ADDRESS PRIVATE DINNER 504/924-5000
8:15pm

location: French Market Restaurant
within the Hilton
attendance: 12

8:20pm DEPART for the Embassy Suites Hotel
drive time 10 minutes

The Embassy Suites Hotel
4914 Constitution Avenue
Baton Rouge, Louisiana

8:30pm ARRIVE hotel and proceed to ONE-ON-ONE 504/924-6566

8:40pm- DROP-BY Hospitality Suite 504/924-6566

9:00pm location: Suite 205

9:05pm DEPART for the Hilton hotel - 10" drive time

Hilton Hotel - Baton Rouge
5500 Hilton Avenue
Baton Rouge, LA

9:15pm ARRIVE hotel and proceed to private 504/924-5000

RON _____ BATON ROUGE, LA 504/924-5000

SATURDAY, APRIL 11, 1987

8:20am DEPART private for the FR breakfast 504/924-5000

5" drive time
LSU Faculty Club
Highland Road
Baton Rouge, LA

PAGE 3
BOB DOLE
TRAVEL SCHEDULE
LOUISIANA

SATURDAY, APRIL 11, 1987

8:25am ARRIVE Faculty Club and proceed 504/388-2356
to the FR breakfast

8:30am- ATTEND/ADDRESS a FR breakfast on 504/388-2356
9:25am behalf of Cong. Livingston

contact: Winnie Beuerman 504/891-5714
Location: LSU Faculty Club
attendance: 30-40
ticket: \$250
event runs: 8-9:30am

9:30am DEPART for the LSU Student Union - 5" drive time

LSU Student Union
P.O. Box 25123
Corner of Rafael and Highland Road
Baton Rouge, LA

9:35am ARRIVE Student Union and proceed to 504/388-5141
NEWS AVAIL

9:40am- NEWS AVAIL 504/388-5141

9:55am location: Vieux Carre Room -
Room #331

10:00am ATTEND/ADDRESS the Louisiana State 504/388-5141
Convention

contact: Mike Chittham 504/928-3276
(H) 504/926-0667

attendance: 800-1,000
Location: Theater in the Louisiana State
Universtiy Student Union

facility: raised stage with free-standing
podium and microphone

Program:
9:50am REMARKS by Senator Mitch McConnell

10:05am INTRO of Senator Dole by Cong. Richard Baker

10:10am REMARKS by Senator Dole

10:30am CONCLUSION of remarks by Senator Dole

page 4
BOB DOLE
TRAVEL SCHEDULE
LOUISIANA/GEORGIA

SATURDAY, APRIL 11, 1987

10:45am DEPART for the Baton Rouge airport - 20"
drive time

11:05am ARRIVE airport and proceed to departing
plane
FBO: Louisiana aircraft 504/356-4101

11:10am WHEELS-UP for Adrian, Georgia
aircraft: Falcon
tail number: N85A
pilots: Zane Parker, Charles Staley
flight time: 1 hour 30 minutes
Manifest: Senator Dole, Glassner, Collins
Sara Cedarholm

1:40pm ARRIVE Adrian, Georgia - Dublin airport
+1hr
FBO: Dublin Air Serv. 912/212-1646
met by: Carl Gillis

1:45pm DEPART for the Picnic Grounds of
Carl Gillis's - 30" drive time
Gillis Residence
Highway 80

2:15pm ARRIVE and proceed to NEWS AVAIL 912/668-3887

2:20pm- NEWS AVAIL 912/668-3887

2:35pm
location: Guest House

page 5
BOB DOLE
TRAVEL SCHEDULE
GEORGIA

SATURDAY, APRIL 11, 1987

2:40pm ATTEND/ADDRESS the Georgia GOP 912/668-3887
Statewide Picnic
contact: Carl Gillis 912/668-3887
attendance: 800-1,000
Location: Carl Gillis's House
facility: outdoors - platform with free-
standing podium and mike, chairs
on platform
Program:
2:40pm WELCOME by Carl Gillis and
INTRO of Cong. Pat Swindall
2:45pm REMARKS by Pat Swindall
2:50pm INTRODUCTION of Senator Dole
2:55pm REMARKS by Senator Dole
3:20pm CONCLUSION of remarks by Senator Dole
3:25pm- MIX/MINGLE on the Picnic Grounds 912/668-3887
3:45pm
3:50pm DEPART for the airport - 30" drive time
4:20pm ARRIVE airport and proceed to the departing
plane - Dublin airport
FBO: Dublin Air Service 912/272-1646
4:25pm WHEELS-UP for Jackson, Mississippi
flight time: 1 hour
aircraft: Falcon 50
tail number: N85A
pilots: Zane Parker, Charles Staley
manifest: Senator Dole, Glassner, Collins,
Cedarholm

BOB DOLE
TRAVEL SCHEDULE
MISSISSIPPI

SATURDAY, APRIL 11, 1987

4:25pm ARRIVE Jackson, Mississippi - Thompson
-1hr airport
FBO: Miller Wills Aviation 601/939-9366
Met by: Charlie Rogers

4:30pm DEPART for the hotel - 20" drive time
Ramada Renaissance
1001 East Country Line Road
Jackson, MS

4:50pm ARRIVE hotel and proceed to MEDIA 601/957-2800

4:55pm- NEWS AVAIL
5:10pm location: 601/957-2800

5:20pm- DROP-BY the VIP Reception of the 601/957-2800
5:45pm Mississippi GOP -
contact: Steve Dickson 601/948-5191
location: Penthouse
event runs: 5-6pm
format: mix/mingle with brief remarks

5:50pm- PRIVATE TIME
6:10pm 601/957-2800

6:15pm DEPART for the Convention Center
drive time 20"
Primo Northgate Convention Center
4330 North State Street
Jackson, MS
CONTACT: STEVE DICKSON
601/948-5191
FORMAT: MIX/MINGLE

6:35pm- DROP-BY the General Reception
6:55pm of the Mississippi GOP United Fund
Dinner 601/982-2064
Location: adjacent to ballroom
attendance: 300
ticket: \$50

BOB DOLE
TRAVEL SCHEDULE
MISSISSIPPI

SATURDAY, APRIL 11, 1987

7:00pm- ATTEND/ADDRESS the Mississippi State 601/982-2064
7:45pm UNITED GOP FUND Dinner
contact: Steve Dickson 601/948-5191
attendance: 500-700
location: Ballroom
facility: raised dais with head-table
PROGRAM:
7:05pm WELCOME by Rees Barksdale -
Chrm. of the Event and INTRO of
Senator Cochran

7:10pm INTRO of Senator Dole by Senator Cochran
7:15pm REMARKS by Senator Dole 601/982-2064
7:45pm CONCLUSION of remarks
7:50pm DEPART for airport ~ 20" drive time
8:10pm ARRIVE airport and proceed to departing plane
8:15pm WHEELS-UP for Washington, D.C.
flight time: 2 hours 15 minutes
aircraft: Falcon 50
tail number: N85A
pilots: Zane Parker, Charles Staley
seats: 7
Manifest: Senator Dole, Glassner

11:30pm ARRIVE airport and proceed to residence
+1hr
FBO: Butler 703/549-8340
11:35pm DEPART for the residence
11:50pm ARRIVE residence

SUNDAY, APRIL 12, 1987

FREE DAY _____ WASHINGTON, DC

RON _____ WDC

2:00

Watergate Restaurant / ALAN BAKSHIAN

BOB DOLE
TRAVEL SCHEDULE
NORTH CAROLINA

STAFF:	GLASSNER
WALSH:	202/745-1083
BEEPER:	202/259-9413
HARRISON:	202/546-2354
BEEPER:	202/259-9412

DRAFT: APRIL 10TH - 2pm

MONDAY, APRIL 13, 1987

9:50am	DEPART for National Airport	
10:10am	ARRIVE airport and proceed to departing aircraft	
	FBO:	Butler Aviation 703/549-8340
10:15am	WHEELS-UP for Raleigh, North Carolina	
	flight time:	45 minutes
	aircraft:	Westwind
	tail number:	512CC
	pilots:	Tony Ayer, Ed Smith
	seats:	7
	manifest:	Senator Dole, Glassner
	contact:	Gloria Enzer 502/685-7100
11:00am	ARRIVE Raleigh, North Carolina and proceed to event - Raleigh-Durham Airport	
	Met by:	Chris Shields
	FBO:	Aero Services 919/782-3232
11:05am	DEPART for The Brown Stone Hotel	
	drive time 25 minutes	
	The Brown Stone Hotel	
	1707 Hillsborough Street	
	Raleigh, North Carolina	
11:30am	ARRIVE hotel and proceed to event	
11:35am-	ATTEND/ADDRESS Dole Supporters meeting	919/828-0811
12:30pm	location:	Executive Lounge
	attendance:	50
	contact:	Cara Flesher
12:35pm-	*TENTATIVE ONE-ON-ONE	
1:00pm	location:	
	NOTE:	Collins and Shields coordinating

BOB DOLE
TRAVEL SCHEDULE
SOUTH CAROLINA

MONDAY, APRIL 13, 1987

1:05pm- NEWS AVAIL
1:25pm location: Caucus Room

1:30pm DEPART for the airport

1:55pm ARRIVE airport and proceed to departing plane
FBO: Aero Services 919/782-3232

2:00pm WHEELS-UP for Myrtle Beach, South Carolina
flight time: 45 minutes
aircraft: Westwind
tail number: 512CC
pilots: Tony Ayer, Ed Smith
manifest: Senator Dole, Glassner, Collins

2:45pm ARRIVE North Myrtle Beach Airport
FBO: Ramp 66 803/272-5337
Met by: Sara Cedarholm

2:50pm DEPART for the Sheraton
drive time 10 minutes
The Sheraton
7100 North Ocean Blvd.
Myrtle Beach, Florida

3:00pm- *TENTATIVE ONE-ON-ONE 803/449-4441
3:20pm location:

3:25pm- ATTEND/ADDRESS meeting with Business 803/449-4441
4:20pm and Political Leaders
attendance: 50-75
location: Governor's Port
press: open
contact: Robby Cunningham 803/237-4022
803/827-2211

DINNER ATTENDEES
6:30 P.M.-8:00 P.M., FRIDAY, APRIL 10
FRENCH MARKET RESTAURANT, HILTON HOTEL
BATON ROUGE, LOUISIANA

Senator Dole

The Honorable Henson Moore and Caroline Moore
(Caroline will be there early to greet the guests.)

Jay Stone, former Administrative Assistant to Henson Moore.
(Will be on the airplane with you.)

Mr. and Mrs. Al Lippman
Attorney from Morgan City (oil and gas capital of
Louisiana). He will commit to Senator Dole, but will advise
you privately so as not to embarrass other attendees.

Mr. Bryan Wagner
National Committeeman. Uncommitted. From New Orleans; very
successful fundraiser.

Lawrence Cherhardy.
From Jefferson Parish, second largest "county" in Louisiana.
DEMOCRAT office-holder, 40 years old. Jefferson Parish is
heart of Bob Livingston's District. He has been an open
backer of Reagan. Was Democratic Party Chairman in Louisiana
in 1984, BUT is willing to get out front for a Republican
candidate, even before the nomination. Uncommitted now.
Knows where the money is -- his is the wealthiest county in
the state.

Chuck McMains.
Was Henson's finance chairman for greater Baton Rouge. When
Senator Dole was last in Louisiana for Henson, the event was
held at McMains' home. He is undecided.

Bill Henry
Republican Area Chairman for Southwest Louisiana.
Uncommitted. A good fundraiser.

George Despot.
Former State Party Chairman, once-removed; served for 4-5
years. From Shreveport, 3rd largest city in Louisiana.
Outstanding fundraiser. Undecided. Cannot come for dinner,
but will come by before the dinner is over.

Trying to get to attend; a good possibility he can come:
Charlie Trent, from Alexandria. Henson's finance chairman
from Alexandria. Business man, good guy, and can raise the
money.

-2-

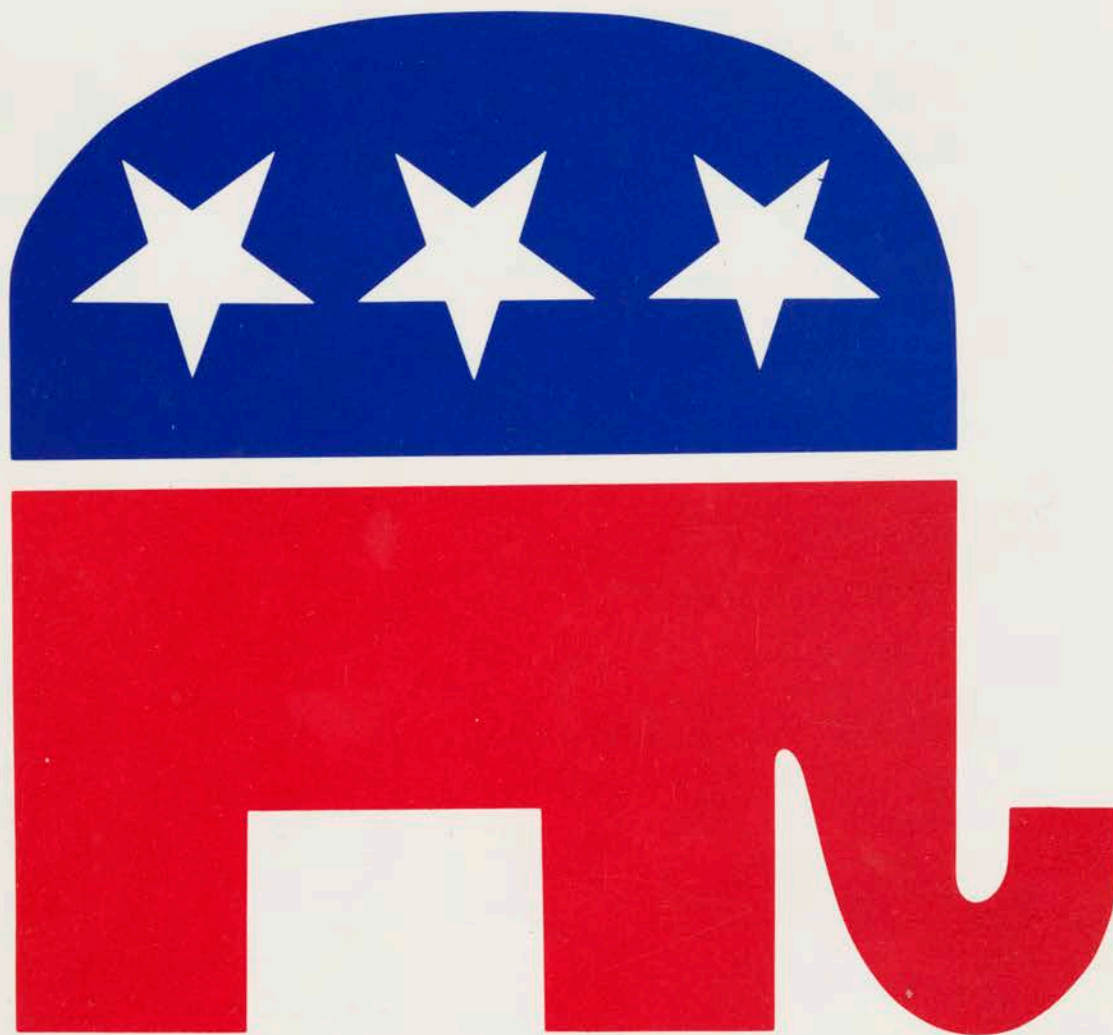
This covers all the major metropolitan areas, except Monroe and Lafayette. Henson made number of calls, but either the people aren't coming to Baton Rouge for the Convention, or because of last-minute notice had other plans.

NOTE: He also talked to Pat Taylor, who was already in Mississippi for the weekend. He wanted Henson to be sure to tell you that he will be playing a major role at the National Convention (in charge of fundraising for the convention); and John Zagami has insisted that he therefore not become involved in any candidate's campaign. He has personally given Bush \$1,000 and will do the same for you; is close to both of you, and will do no more and no less for both.

TRADE ISSUES IN LOUISIANA

1. Oil import fee. Mixed feelings. Majors tend to have overseas holdings so not overly enthusiastic; independents produce in U.S. and see it differently. Conservatives hostile because it involves government intervention.
2. New Orleans. Free trade bastion because it's a port which does well when there's lots of commerce, including imports.
3. Shipbuilding. Concern that Koreans and Japanese are taking away too many ship orders.
4. General. 14% unemployment in state, some like to blame it on Japanese. Unions, though not strong, take this line.

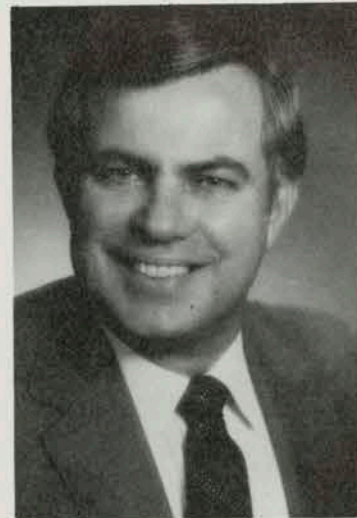
LOUISIANA REPUBLICAN CONVENTION



APRIL 11, 1987
BATON ROUGE, LOUISIANA

Gus Gonzalez

TREASURER



Call Your Toll Free Support Line
1-800-737-VOTE
1-800-737-8683

State Campaign Headquarters:
5515 S. Sherwood Forest Blvd.
Baton Rouge, LA 70816

BOBBY PATRICK

for

SECRETARY of STATE

Campaign Headquarters
6334 Manor Drive
Alexandria, LA 71302

Best Wishes to

The Republican Party

from

your friends at

Copy-Rite Printing

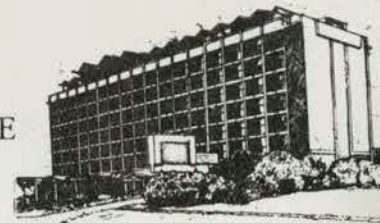
COMPLETE VACATION and BUSINESS TRAVEL PLANNING

Call for our **FREE** 1987 Tour Schedule brochure of
14 exciting escorted luxury tours at special group
savings.

(504) 383-2215
In LA 1-800-345-3987

**NORFOLK TOURS and
FOUR SEASONS TRAVEL SERVICE**
Specializing in the Personal Touch

INN ON THE LAKE

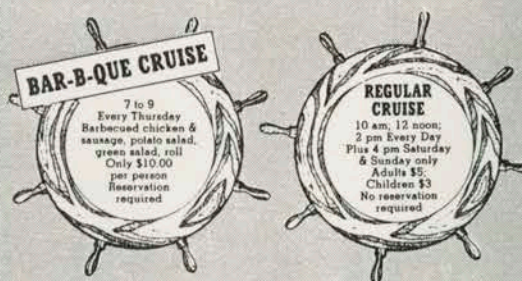


Inn on the Lake is Baton Rouge's
unique new hotel. Overlooking beautiful
Capitol Lake. Built around a remarkable
bed/breakfast/beverage concept for
pleasing you.

For more information, call (504) 346-1482.

RIVERBOAT CRUISES

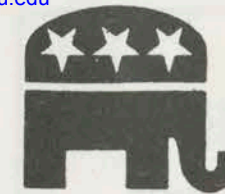
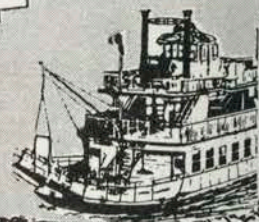
Food & beverage sold on boat. Cash bar; soft
drinks, beer, highballs.



FOR ALL OF YOUR
**SPECIAL
OCCASIONS**
Anniversaries, Birthdays, Office
Parties
TRY OUR
**EVENING
CRUISES**
Gift Certificates
Available

**CATFISH
CRUISE**
7 to 9 pm Every
Tuesday. Fried Cat-
fish & All the
trimmings. Reserva-
tions required.
only \$10.00 per person

SAMUEL CLEMENS
Mississippi River at Florida St.
CALL 381-9606
Group rates & charter tours available



The Republican Party of Louisiana

A WORD OF WELCOME

On behalf of the State Central Committee, the state officers, and the staff at headquarters, welcome to the State Convention of the Louisiana Republican Party. We want you to participate in and enjoy all of the action of this convention.

Our thanks go to the East Baton Rouge Parish Republican Party and to all who have worked so hard to make this event possible.

To our guests and visitors from out of state, we welcome you and thank you for sharing this experience with us.

Louisiana needs all of us working together to provide it with leadership that can solve the serious problems existing now. The Republican Party can and will meet this challenge.

DONALD G. BOLLINGER
State Chairman

AGENDA

- 7:30 Richard Baker Fundraiser.....Plantation Room
- 8:00 Registration.....LSU Student Union Lobby
- 8:40 "His People" Choral Group
- 9:00 Opening Ceremony.....Temporary Convention Chairman
Donald G. Bollinger, Chairman, The Republican Party of Louisiana
- Choral Group Returns
- Pledge of Allegiance.....Keith Darce, Chairman, LSU College Republicans
- Invocation.....by the Rev. Hugh Baker, First United Methodist Church
New Iberia
- 9:20 Credentials Committee Report.....Harry Rosenberg, Chairman
- 9:30 Elections of Permanent Chairman and Secretary
Address of Permanent Chairman
Address of Permanent Secretary
- 9:45 Address by the Honorable Mitch McConnell, U.S. Senator from Kentucky, Co-
Chairman of "Bush for President." Representing the Honorable George Bush, Vice
President of the United States.
- 10:00 Address of the Honorable Robert Dole, Minority Leader, U.S. Senate
- 10:15 Rules Committee Report.....Cyrus Greco, Chairman
- 10:30 Resolutions Committee Report.....The Honorable Carl Crane, Chairman
- 10:45 Address by the Reverend Pat Robertson
- 11:00 Continuation of Resolutions Committee Report.....Carl Crane
- 12:00 Luncheon Recess.....LSU Cotillion Ballroom
Offering.....Rev. John Carville, Pastor
Christ the King Chapel, LSU Campus
Address.....Governor David C. Treen
- 1:30 Re-Convene Convention
- 1:35 Richard McBride.....Senior Counselor to Jack Kemp Campaign
- 1:50 Nominations for Endorsement of Statewide Officials
- 5:00 Convention Adjournment

HISTORY OF THE LOUISIANA REPUBLICAN PARTY

The conventional history book and political science book documentation of the Louisiana Republican Party dwells on the Reconstruction Days and digresses into the era of Huey and Earl Long. Only two written accounts cover portions of the modern-day Louisiana Republican Party. The two references, footnoted below*, are heavy with statistical analysis and cover through the Governor Treen administration. They are excellent references and should be in the library of anyone contemplating running for political office or managing a campaign.

Tremendous progress has been made during the past five years measured by growth in the number of Republican legislators (now 27) and Republican voter registration (now 295,000 statewide, a 13.6% of total). Republican history is being made monthly and no published reference will be completely current.

This writing has been prepared to give the many new Republicans a sense of history for their politics. Since politics is manifestly people, their philosophy, their desire for change in the system and their personalities, this historical vignette deals entirely with those men who have led the Louisiana Republican Party during the past one score and seven years. Sometimes it is a recitation of the achievements during their chairmanship; unfortunately, it is not in sufficient depth or detail to really know the persons. It is hoped, however, that collection and publication of these biographical sketches will give a sense of historical meaning to those of us who joined the Louisiana political scene in the past few years. The author acknowledges that numerous improvements can be made; he hopes that someone will come forth to serve the State Party as historian or archivist. There seems to be no collection of historical detail, at least not in one accessible place. Surely there must be persons among us with the time and talent to collect, save and maintain records such as newsletters, State Central Committee correspondence, news clipping scrapbooks, etc. Meanwhile, read on to get a sense of history of the Louisiana Republican Party.

* "Louisiana Politics (Festival in a Labryinth)", edited by James Bolner, 1982, Louisiana State University Press, 375 pages, available in paperback.

* "The Louisiana Republican Party, 1948-1984: The Building of a State Political Party", by Stella Z. Theodoulou, 1985, Tulane Studies in Political Science, Tulane University, New Orleans, 171 pages, available in paperback from Tulane for about \$19.00, postage included. Original work from author's doctoral thesis.

LOUISIANA REPUBLICAN STATE CHAIRMEN SINCE 1960

1960 - 1962 *Leroy Smallenberger, Shreveport*

Some of the senior Republicans claim that Leroy Smallenberger was the first person to hold the formal title of Louisiana Republican Chairman. He held this position until being appointed Referee in Bankruptcy in 1962 from which he retired in 1986. Born in 1912 in Peoria, Illinois, graduated from the University of Illinois in 1935 and from LSU Law School in 1938, he entered law practice in Shreveport. Entering military service in 1942, his final military duty was Military Governor for Lautreus Heggen-dorf, Germany during the postwar occupation.

Judge Smallenberger became a Republican in 1938 when there were very, very few people registered as Republicans, possibly a couple hundred in New Orleans and less than 75 in Shreveport and vicinity. In the early years it was very difficult to interest anyone in joining the Republican Party as there were not enough registered Republicans to get anyone to run for office. Anyone registered as a Republican gave up his right to participate in local and state elections.

In 1948 there was an upsurge of young people forming Republican Clubs because it looked as if Dewey was a winner; when Dewey lost the youth clubs immediately disappeared. A change occurred in the Republican ranks in 1952 — Taft and Eisenhower vied for the Republican nomination for President. Old-line Republicans, headed by John E. Jackson of New Orleans and Judson Grimmett of Shreveport were for Taft. John Minor Wisdom of New Orleans represented the Eisenhower group at the convention. Eisenhower forces won, and the whole complexion of the Louisiana Republican Party changed — the old guard was defeated by a new, young, aggressive group of people, mainly from New Orleans. Meanwhile, a young astute group from Shreveport jumped on the Eisenhower band-wagon and rolled to victory with him. These included Tom Stagg and Jack and Maggie-belle Hodges.

Judge Smallenberger indicates that "this event started real growth in Republican registration. While the Party is still a minority party, it is respected by the voters and is on an equal footing with the Democrats since many Democratic Party voters talk as if they were conservative Republicans and many of them vote that way." He adds that "It was a real stigma to be connected with being a Republican at the time he first became interested in politics; now the stigma is gone, and although it is still a minority party, it is respected as being a real viable force in Louisiana politics."

1962 - 1964 *Thomas C. Hall, Lake Charles*

Born in New Orleans in 1921 and died in 1973 while on a business trip at the untimely age of 52. Graduated with Bachelor of Arts and LLB degrees from Tulane after WWII, having served in the U.S. Navy. He later returned to the navy for further military service during the Korean war.

Following graduation from Tulane, he joined the Lake Charles law firm of King, Anderson and Swift where he later became a senior partner. He became well-known locally and throughout the state, and was active in the Republican Party from the early days. He helped form the first Calcasieu Parish Executive Committee. His widow, Eunice Perkins Hall, was a Leesville native; she resides in Lake Charles and remains an active Republican.

Tom Hall attended the 1956 Republican Convention as a delegate, and then served as a delegate to the 1960 National Convention in Chicago. He was one of 10 convention delegates who declined to change his vote to Nixon in order to make the nomination unanimous for Nixon; the 10 sustained their support for Goldwater. In 1964, as a delegate to the San Francisco Convention, he helped secure the nomination for Senator Goldwater.

Tom Hall agreed to serve as caretaker Chairman of the Louisiana State Party for a brief period—until someone would agree to take the position. The vacancy had occurred when Leroy Smallenberger resigned on being appointed Referee in Bankruptcy. Hall had served as Finance Chairman in Lake Charles.

He was very active in the Nixon campaign of 1960, serving as chairman, and in the Charlton Lyons gubernatorial campaign in 1963. Lake Charles and the rest of Calcasieu Parish carried for Lyons which was a minor miracle considering the Lake Charles electorate. In the early 1960's there were only 600 - 700 registered Republicans in the area.

The Republican Party "Pledge Plan" was started during the Hall chairmanship as a way to provide funding that was not cyclical with election campaigns. It was the main source of funds until the Republican Trust was developed in 1977. The Pledge Plan was significantly altered under Chairman Lyons as they attempted to duplicate the Mississippi Plan.

The first executive director of the State Party, Jack Lewis, was engaged by Tom Hall.

1964 - 1968 *Charlton H. Lyons, Sr., Shreveport*

Charlton H. Lyons was born in Abbeville, Louisiana in September 1894, and raised in Melville, La. He attended LSU and received a Bachelor of Arts and a Law Degree from Tulane University. He practiced law at Shreveport and formed Lyons Petroleum Corporation.

Mr. Lyons left the Democrat Party in 1960, noting that the 1960 Democrat platform was nothing more than a "blueprint for socialism". He ran for congress in 1961 and lost; he ran for governor in 1964 against Governor John McKeithen, receiving nearly 40% of the vote. He also served as National Committeeman, and was Chairman of the organizing committee of the Public Affairs Research Council.

"Two-Party Advocate" was then the official publication of the Republican Party of Louisiana. Some old copies were provided by Charlie deGravelles, the earliest copy being Vol. 1, No. 13 dated

July-August 1966. It indicated that 62 Republicans were running for office in the 1966 elections. It also indicated that in 1962 less than ten candidates had filed for public office. The State Party had headquarters office in Baton Rouge, with George Harris as executive director. During this period the PAC Charter was built — a long and deliberative process.

An editorial in the Two-Party Advocate of October 1967 says "The one man responsible for this Republican rebirth, or could one say birth — since the state GOP of reconstruction days was something entirely different — is, of course, Charlton Lyons. And in this case, the term 'one man', fits precisely. Successful in school-teaching, law and oil, Mr. Lyons joined the Republican Party in 1960 with the idea of making Louisiana a home for two strong political parties — a situation in which he believed, and believes, is essential to the preservation of democracy in this country."

"Mr. Lyons quickly established himself as a powerful candidate, organizer and recruiter for the State GOP. His obvious sincerity and enthusiasm animated the whole party — and he won the Louisiana Republicans a new status of respect. Under his leadership, the party has doubled in registration, elected men to state office, and built a firm political base."

Another item in this issue indicated "there are about 48 parishes out of 64 which now have the legal machinery (a Parish Executive Committee) to certify GOP candidates to run for office. Our goal is to get Republican executive committees in all parishes."

In November, 1967, there were 1,364,077 registered Democrats and 22,503 registered Republicans, representing 1.6% of the total registration.

"Now at 72, Mr. Lyons is stepping down from the party leadership. It is time, he says, for younger men to take over. His departure from active leadership — and a companion decision never to seek public office again — marks the end of an era in which the Louisiana Republican Party achieved more in seven years than it had in the seventy before."

1968 - 1972 Charles C. deGravelles, Lafayette

Born in 1913 in Morgan City; graduated from LSU in 1936. Employed by the Land Department of Amoco Production Co. during 1937-1972. He also taught Oil & Gas Law at the University of Southwest Louisiana during 1955-1962. Since 1972, Charlie has been an independent landman in Lafayette.

When Charlie registered Republican in 1941, he was the only white Republican in Lafayette.

At the February '68 meeting of the State Central Committee, the Chairman was empowered to create regional "areas" and appoint regional vice-chairmen in each region. A first appointment was David C. Treen, New Orleans lawyer and GOP leader, for the parishes of Orleans, Jefferson, St. Charles, St. Bernard and Plaquemines. The May edition of the Two-Party Advocate contained an editorial by

"Woody" Jenkins, editor, on the differences between the two parties.

In early 1969, there were 1,411,117 registered Democrats, 28,207 registered Republicans and 9907 independents — 2.0% Republican registration.

The paid staff consisted of three persons — the unofficial executive director, Mike Padden from the state of Washington, a fieldman by the name of Henry (Huck) Walther who later went to Washington D.C. to work for Reed Larson and a full-time secretary. Jim Smith worked part-time preparing press releases and recruiting with the YRs. The state headquarters "office" during this chairmanship was a two-room wing of the home of Charlie and Virginia deGravelles in Lafayette. In the second year he established a second office on Florida Boulevard in Baton Rouge, manned entirely by volunteers headed by Mildred Anderson. Office expenses were paid by the state party. The state vice-chairman was Mrs. Pat Lindh who assumed a very active role.

A major emphasis was given to expansion of youth groups such as TARs and college Republicans. This age group was especially oriented toward the Republican Party.

In December, 1969, the GOP Chairman formed a State Research and Issue Committee which had been a goal for several years. The first chairman was W. Henson Moore. Other members included: J. Richard Herrin, Larry Paddock, John Henry Bateman, Mrs. James Boyce, William F. Campbell, Ray Fredlund, Lawson Lott, Gordon Pugh, William Tete, Hezekiah Jackson and Rev. L. L. Haynes. In January, 1971, the new committee issued a report on its first year of study — they had produced a total of nine position papers. In addition to the papers, members of the committee had participated in panel discussions, appeared on the radio and television, made speeches and attended hearings on behalf of the committee and the Republican party on a total of 18 occasions during the 12-month period speaking out on positions formulated in the position papers. These activities served to increase visibility and respect for the Republican Party in Louisiana.

This was a successful building period — with heavy recruitment from the youth population and many training classes throughout the state with parish groups, women's groups and youth groups.

Early in 1968, the tabloid "The Republican Advocate" replaced the "Two-Party Advocate" and the LFRW's "The Republican Outlook" with input from both the state party and the women's federation. This 8-page tabloid was printed in Baton Rouge on newsprint with extensive use of photographs. Considerable space was devoted to activities in the parish organizations — women's clubs, PACs, PECs and TARs. A speakers bureau was established. Every important Republican in the state was asked to join and describe the subject of the speech he would give. There were literally thousands of civic clubs in the state, and they were mailed information on the Speakers Bureau. Acceptance was high and media coverage was excellent, assisted by prepared press releases. The bureau was coordinated by Mrs. Beverly McLean of Lafayette.

The state "Pledge Plan" was expanded to develop regular contributions to the state party. Monthly contributions of \$2 - \$10 were accepted. Several finance programs were initiated and the state

party debt was reduced by half in two years.

A 14-point blueprint for building the Republican Party in Louisiana was passed by the State PAC Board in 1969. This was used to organize and build parish organizations. In January, 1971, Chairman deGravelles published a tabloid, "Republican Progress — A Report From The State G.O.P. Chairman 1971". This was sub-titled, "An official look at the state GOP during the last year; what it has and is doing for you!". This very readable 12-page issue contained extensive articles on financing the state and local party operations, an annual report, a report on activities and achievements of the state headquarters staff, etc. A prodigious writing and publication effort!

A Special Recruitment Issue of "Republican Progress" was published in March, 1971. This 8-page tabloid contained: election dates, an extensive review of reapportionment, the litigation, the gerrymandering and the current status. Several pages were devoted to duties, qualifications and salary of every elected public office.

National Committee persons were Tom Stagg (Shreveport), Mrs. Jean Boese (Alexandria) and Charles deGravelles (ex-offio national committeeman as state chairman).

1972 - 1977 James H. Boyce, Baton Rouge

Born in October, 1922, in Carrollton, Missouri. Moved to Baton Rouge in 1930 and graduated from Baton Rouge High in 1939. Attended Culver Military Academy and Engineering College at LSU. Entered Naval Air Corps in December 1942. On his return from service, he started work for the Caterpillar dealer in Baton Rouge and subsequently got the Caterpillar franchise in 1947. He retired in 1982.

Mr. Boyce became active in the 1956 Eisenhower campaign in the 6th Congressional District, and he ran "Democrats for Nixon" in 1960. Tiring of being the only Democrat on the "Goldwater for President Committee," he changed his voter registration to Republican in 1963.

Jimmy Boyce became active in the Goldwater for President movement following the Nixon loss to Kennedy in 1960. Immediately after this election, a national group met in Chicago to develop a plan to form the "Goldwater for President Committee." They undertook to get Goldwater supporters elected as official delegates to the 1964 Republican National Convention in San Francisco. Additionally, he was Finance Chairman of the state Goldwater Committee, and Louisiana exceded its fund quota more than any other state. In state Republican Party activity, he was State Finance Chairman prior to being elected State Chairman in 1972.

During this tenure, the first official headquarters office was rented in the Fidelity Bank in Baton Rouge. An added convenience of this location was the availability of a conference room. Jay Stone was named the Executive Director who served until he moved on to Washington

as Administrative Assistant to Congressman Henson Moore. Billy Smith followed as E.D. and he was succeeded by Allen Martin. Martin later moved on to Washington as A.A. to Bob Livingston in late 1977. The office was later moved (during the Cade chairmanship) to McGehee Street, off Florida where Debbie Bowland served as E.D. starting in late 1977.

The Republican State Finance Committee was formed in 1977 since the growing party needed added funding from another steady source. It was initiated by Messrs. Boyce, Cade and Despot, all of whom served as State Chairmen during the '70s. This Committee evolved into the Republican Trust. The Pledge Plan had been successful but it had been handicapped by difficulty in getting the banks to accept the inconvenience of the monthly bank draft system.

Jimmy Boyce remarked on the tremendous amount of cooperation received from the Republican National Committee. The first major state convention was staged with national speakers participating, including George Bush, Chairman of the Republican National Committee, and John Connally.

The early efforts to get Democrats to change their registration to Republican was handicapped by the requirement that all changes of party had to be done by a personal appearance at the Registrar of Voters Office. The continued Republican efforts resulted in the adoption of a card that fit into a desk file — the manner in which most parishes maintained their voter registration records — only a few of the very largest were computerized. This evolved to agreement on the familiar salmon-colored card which greatly simplified the change of registration.

The open primary introduced one problem into the nomination process — the difficulty of communicating with all registered Republicans to bring them to Republican caucuses in order to concentrate the Republican effort on a single candidate. The local caucuses typically bring out 50-500 voters which is fewer than desirable for nomination. However, the caucus had been used successfully before: the Republican candidate Lyons received 40% of the votes against Governor McKeithen in 1964.

1977 - 1979 John Cade, Jr. Alexandria

After first registering as a Democrat in 1949, John Cade changed his registration to Republican about 1950. At that time the registered Republicans were a few oldtimers who worked for the Post Office, a few people who had moved to Alexandria from the North and a few others. A local attorney, George Hall, put together a campaign effort for Richard Nixon in 1960, a campaign that John Cade participated in. Mr. Jack Lewis was appointed Postmaster in Alexandria in the Eisenhower years; Lewis ran for Congress in the 8th Congressional District in 1962 — the first local candidate that John Cade ever had an opportunity to vote for. Mrs. Jack (Dorthy) Lewis had been National Committeewoman during 1960 - 1964.

A member of the Republican State Central Committee resigned in 1961, and John was appointed to the position with the help of George Hall and Mrs. Jack Lewis. John has held the SCC position ever since.

John and five other Republicans ran for School Board in 1966, the first Republicans to run for local office in Rapides Parish. All of them lost. In 1968, John and four other Republicans ran for Police Jury with the same result. End of that exercise.

In 1972, Dave Treen ran unsuccessfully for Governor and was then elected National Committeeman. When Treen resigned in 1974, Cade was elected his replacement as National Committeeman. In March of 1977, Jimmy Boyce announced his resignation as State Chairman, and John Cade was elected to that position without opposition; he served until December, 1978 when he resigned to become Chairman of Dave Treen's campaign for Governor. During John's party chairmanship, the third Republican Congressman, Bob Livingston, was elected. Allen Martin had been Executive Director of the party and was loaned to Livingston to manage his campaign. He then went on to become Livingston's Administrative Assistant in Washington. Debbie Bowland was employed as Executive Director of the party and served until she resigned to go into the 1979 Treen campaign. At this point, Larry Kinlaw, who had been Assistant Director, was promoted to E.D of the party.

Additionally, during John's chairmanship a strong bid was made for the Fourth Congressional District seat with Jimmy Wilson making the runoff but losing in the runoff to Buddy Leach. Quite a number of Republicans were elected to local offices during this period.

During John Cade's chairmanship, the Louisiana Republican Trust (initially called the Louisiana Republican State Finance Committee) was formed by Messrs. Boyce, Cade and Despot.

1979 - 1985 George J. Despot, Shreveport

Born in January 1927, in Shreveport. Attended Springhill College; graduated with Bachelor of Arts Degree from Notre Dame; attended Georgetown University Law School; graduated with LLB Degree from Louisiana State University Law School.

He served as campaign chairman for Charlton Lyons in the 1983 - 1984 race for governor. Also served as Republican State Finance Chairman in 1967, 1977 and 1978. He was elected as State Chairman in December 1978 (when John Cade resigned) and served in this capacity through 1985.

In 1981, the present state headquarters building was purchased. Four executive directors served during the Despot administration — Larry Kinlaw, Lorraine Richards, John Vinturella and Greg Beurman. During this period, the Republican voter registration in Louisiana increased from 79,000 (Dec. '78) to over 275,000.

Additionally, the Republican Hispanic Assembly was formed in early 1984. Also a major campaign to convert conservative Democratic office holders to Republicans was undertaken. It resulted in the change of a sizeable number at the local level, and its most apparent effect was the increase in the state legislative delegation to 23 members.

The thrust of the Despot chairmanship during his term was on communication within the party, state party organization, finance and political technology. The concept was to maintain a tightly knit unit across the entire state, identifying targets and concentrating on those targets with very reasonable success.

National Committeeman was Frank Spooner of Monroe and National Committeewoman was Ginny Martinez of Kenner.

1985 - Present Donald G. Bollinger, Lockport

Donald G. Bollinger, 71 years of age, is a native and lifelong resident of Lafourche Parish. He is a widower. His wife, the former Doris Toups, died in February, 1986. They are the parents of Charlotte B. Bordelon, Donald T. "Boysie" Bollinger and Andrea B. Suard. The Bollingers have seven grandchildren.

Donald G. Bollinger is a graduate of Lockport High School and took business and banking courses at Nicholls State University. He is the founder of Bollinger Machine Shop & Shipyard, Inc. and has been involved in the ownership and management of several corporations dealing with marine transportation, oil and gas exploration, farming and real estate. The Bollinger enterprises have provided several hundreds of good paying jobs and have had a large impact on the economy of the area. He is a long-time member of the Raceland Bank & Trust Company Board of Directors.

Bollinger was the first President of the Lockport Lions Club and has been a member since 1947. He served as Grand Knight of the Knights of Columbus Council 3054 and has received many service and civic awards.

He served twice as alderman of the town of Lockport, on numerous Parish and State Boards and on the Governor's Cabinet as Secretary of the Department of Public Safety for four years. He is a member of the Lafourche Parish Republican Executive Committee, the Republican State Central Committee, and is serving on the Republican National Committee and as State Chairman of the Republican Party of Louisiana, to which position he was elected on December 7, 1985. He has continued the policies as set out by previous chairmen, and the growth of the party is excellent. The number of elected officials has grown rapidly with the help of the "party switch" programs and the election process.

The party headquarters has been maintained in good condition and has been improved by the addition of a computer system and other innovations. The staff is excellent and has a training program to assure continuity and excellence.

The party was able to secure two outstanding events for 1988; the Southern Republican Leadership Conference and the Republican National Convention, both to be held in New Orleans, thus creating a large economic impact on the whole state. National Committeeman is Bryan Wagner of New Orleans. National Committeewoman is Ginny Martinez of Kenner.

In 1987, there will be the Louisiana Republican State Convention and statewide elections for state and parish officials.

AUXILIARIES OF THE LOUISIANA REPUBLICAN PARTY

Louisiana Young Republican Federation

Louisiana Federation of Republican Women

Louisiana Black Republican Council

Republican Hispanic Assembly of Louisiana

The Louisiana Republican Party takes great pride in recognizing the above four auxiliary organizations. The growth since 1960 in terms of Republican registered voters and Republican elected public officials is a success story of the auxiliaries, particularly the Republican Women and the Young Republicans. The vigorous involvement of the Black Council and the Hispanic Assembly will add greatly to current and future Republican successes. Each of them has prepared a commentary on their activities which the reader will find of interest in the next four pages.

LOUISIANA YOUNG REPUBLICAN FEDERATION

The Louisiana Young Republican Federation is the official youth group of the Louisiana Republican Party. The Federation is composed of the Teen Age Republicans, College Republicans and Young Republicans. In 1988, the LYRF will celebrate its fortieth anniversary.

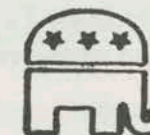
The LYRF's motto is "Training tomorrow's leaders... today." Among the Federation's former state chairmen are Governor David C. Treen and Morton Blackwell, former advisor to President Reagan and president of the Leadership Institute.

John Michael Lockhart of Denham Springs is the current state chairman of the LYRF. The College Republican state chairman is Scott Forbes of Baton Rouge and the Teen Age Republican State Chairman is Clint Person of Jennings.

The LYRF has an active agenda planned for 1987. The Federation will hold its state convention in Baton Rouge May 2 and several leadership schools are planned to train young Republicans for the Fall campaigns and for the years to come. Morton Blackwell's Leadership Institute will conduct a training school for College Republicans April 25-26, a Teen Age Republican Camp is set for June 11-14 and a Young Republican Field Workshop is tentatively scheduled for June 20. Two additional College Republican schools and a second Teen Age Republican Camp have been tentatively set for August.

The Federation is currently developing a Teen Age Republican program that can find easy acceptance in both private and public school systems. The six-point program includes promoting and encouraging responsible voter participation and an explanation of the philosophical differences in the platforms of the two major political parties.

For more information about the LYRF, contact John Michael Lockhart at (504) 665-1266 or write him at Post Office Box 1223, Denham Springs, LA 70726.



LOUISIANA FEDERATION OF REPUBLICAN WOMEN

In 1987, the Louisiana Federation of Republican Women celebrates thirty-four years of Republican activism, as the largest women's political organization in Louisiana.

As an effective volunteer army of the Republican Party, the Federation is the heart and soul of republicanism. In all successful elections, the dedicated Republican women have made the difference; they are the vital link in the cause of good government.

The National Federation of Republican Women celebrates fifty (50) years of proud history in March of 1988. For half a century, the federation has provided opportunity for women in politics; and, in the 1980's, the main thrust of this unique organization continues to be practical politics. For all Republican women, career and non-working, who care to be involved in government, and those women of all ages and all walks of life who want to have a voice in their future, the Federation provides support and information, service and training.

The main objectives of this organization are: (1) to promote an informed public through political education and activity; (2) increase the effectiveness of women in the cause of good government; (3) support objectiveness and policies of the Republican National Committee and work for the Republican Party nominee.

The Federation-sponsored Campaign Schools, Women Candidates Seminars and Polling Schools help develop the skills needed to assist in planning, financing, and operating campaigns for public office. Through years of training and campaigning, many Republican women have acquired the expertise and confidence to consider themselves for public office, and now serve their communities and state as elected public officials.

Any Republican elected official in Louisiana, from Congressional to School Board Office, will attest to the prominent role of Republican women in his/her successful campaign. Louisiana Republican women truly exemplify the National Federation theme: "Leading America's Women."

The Louisiana Federation of Republican Women, as of 1986, has grown in membership to over 2,200 with 52 active unit clubs in 36 parishes. The State Federation encompasses four regions, to which a Regional Vice-President is elected from each region to communicate among clubs in her district, to organize new clubs in her area, and to call regional meetings for the purpose of disseminating information on issues, candidates and State Board meetings.

Two State Federation Board meetings are scheduled per year, each in a different region; all federation members are invited and encouraged to attend.

A Biennial Convention of the Louisiana Federation is held during the first quarter of odd-numbered years, for the purpose of electing officers for the State Federation from its membership; for voting on resolutions proposed by the various clubs and whatever business is considered necessary by the Board of Directors.

The theme chosen for the 17th Biennial Convention in February, 1987, was: "Republican Women Meeting the Challenge." The challenge for 1987 is set; to elect a Republican Governor for Louisiana, and to propose specifics for educational reform to the state legislature.

The Louisiana Federation of Republican Women is dedicated to "meet the challenge" in 1987, 1988 and beyond.

THE HISTORY AND GOAL OF THE LOUISIANA BLACK REPUBLICAN COUNCIL

In 1972, at the National Convention in Miami, the Party rules were amended to recognize a Black organization and official auxiliary. Convention Chairman Rep. Gerald Ford and Ed Bivens, a Black mayor, assisted in passing the amendment. The National Black Republican Council was formally established at a meeting of the Republican National Committee in Washington under the chairmanship of George Bush. Dr. Lucas was the first chairman and Mayor Ed Bivens was Treasurer. Arthur Fletcher, a consultant to Chairman Bush and the RNC, coordinated several regional meetings. State and local chapter building then became a priority of NBRC.

By 1976, a number of chapters had been established and James Cummings of Indiana was elected Chairman. Chapter building accelerated under Chairman Cummings, who was reelected in 1980. NBRC, which was the first Black organization to endorse Ronald Reagan for President, played an active role in the 1980 Presidential campaign.

When Chairman Cummings resigned to assume a position with the Reagan Administration in January of 1982, LeGree Daniels of Pennsylvania was elected chairman.

The growth and development of the Council in recent years is due in large part to the active interest of recent Republican National Committee chairmen, including George Bush, Mary Louise Smith, Bill Brock, Richard Richards and Frank Fahrenkopf, Jr.

The Louisiana Black Republican Council (L.B.R.C.) has ten chapters across the state. The current Chairman is Eulis Moore; Vice Chairperson, Ann Gaines.

Each chapter is governed by a chairman, co-chairman and a standing committee.

The L.B.R.C.'s annual fund raising dinner is held each year on or around June 19th ("Juneteenth", the day Negro slaves celebrated as "Freedom Day"), honoring P.B.S. Pinchback, the only black governor to serve the state of Louisiana.

At the Sixth Annual P.B.S. Pinchback Dinner in 1986, the guest speaker was the Honorable Samuel R. Pierce, Secretary of the U.S. Department of Housing and Urban Development. The Honorables Donald Bollinger, David Treen, Henson Moore and Sidney Barthelemy graced the dais. Man of the year was Roy Plummer.

The goal of the L.B.R.C. is to increase black participation in the Republican Party.

With the help of the Louisiana Republican Party we resolve to increase the black vote for Republican candidates by increasing the number of Black Republicans.

There can be no doubt that in the last three years, L.B.R.C. has become an established and recognized member of the Louisiana Republican Party's family. The challenge for Eulis Moore is to develop greater strength for L.B.R.C. as a force within the Louisiana Republican Party and the black community.

REPUBLICAN HISPANIC ASSEMBLY OF LOUISIANA

The Republican Hispanic Assembly of Louisiana, now in its third full year of activity, boasts over 300 active dues-paying members. At present, the elected State officers include Salvador Longoria of New Orleans as the State Chairperson, Carlos Toca of New Iberia as Vice-Chairperson, Elena Irimia of New Orleans, Executive Vice-Chairperson, Pedro Francisco of LaPlace as Treasurer, Nancy Marinovich of Metairie as Secretary and Angela Correa of Metairie, Assistant Secretary.

The Assembly now has active Chapters in New Orleans, Baton Rouge, East Jefferson, Lafayette, Pointe Coupee, the River Parishes, Shreveport, Bossier and Calcasieu Parishes.

Local Chapters have been actively involved in Republican campaigns throughout the State. Members served on steering committees for Henson Moore and David Thibodeaux, and are now working closely with Bob Livingston's staff as he prepares for the governor's race.

In addition, different chapters throughout the State have become involved in varied endeavors, such as English and Naturalization classes, work with Hispanic prisoners, working on staffs of elected congressmen. Members have also monitored the progress of immigration bills and other legislation that affects Hispanics throughout the country.

In 1987, the Republican Hispanic Assembly of Louisiana takes pride in its efforts to become a well organized and viable member of the Republican Party organizational family in Louisiana.

SPECIAL THANKS TO . . .

Michael Chittom, Convention Chariman
Jane Steele, Convention Co-Chairman
EBR Women's Republican, Gwen Carroll, Chairman
EBR Professional & Business Women's Republicans
Eve and Glenn Richard, Registration Chairmen
Kyle Ardoin, Red-Hatters Chairman
Keith Darce', LSU College Republicans
Scott Forbes, State College Republican Chairman
Don Hornbeck, Program Chairman
Patricia Wilton, Public Relations Chairman
Jim Murry, Physical Chairman

Rosemary Garruto, VIP Chairman
Tom Wilton, Treasurer
Christy Casteel
Shelly King
George Guidry
Republican Party Staff
Betty Knights, Office Manager EBR Headquarters
Winkie Berlin & Ruby Noble - Decoration Chairmen
Ruby Noble, Entertainment
Lynn Ives - Assistant to the Chairman
Tom Colten - Assistant to the Chairman
Evelyn Loveless - Assistant to the Chairman

Options

GOURMET GRILL
OYSTER BAR

A few of your many "options"

APPETIZERS:
Grilled Seafood Brochettes
Carpaccio
Oysters Provencal
Poached Salmon with
Bearnaise Sauce

SOUPS:
Louisiana Seafood Gumbo
Oyster and Artichoke

ENTREES:
Fresh Sautéed or Grilled Fish
Shrimp and Duck Etouffee
Fajitas
Fried Seafood

SALADS:
Warm Raspberry Chicken Salad
Louisiana Seafood Salad
Homemade Guacamole

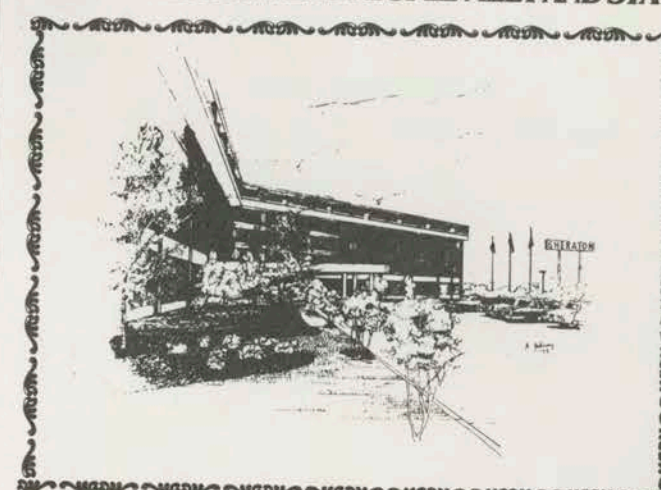
HOMEMADE DESSERTS:
Chocolate Fudge Cake
Mile Hi Pie
Fresh Fruit Parfait

There's much, much more. Visit our wine bar with over 40 wines available by the 1/2 glass, glass, or by the bottle. "Fare is lighter, tastier and visually exciting. I'm eager to eat my way through the entire menu."

Betty Eppes, Restaurant Critic, Fun Section

Village Square
College Dr.
926-2910

WHERE THE BUSINESS PEOPLE MEET AND STAY



Located in the heart of corporate district on I-10 and College Drive, minutes away from Downtown, LSU and Catfish Town. Within walking distance of fine restaurants and nightly entertainment. Featuring:

- 291 sleeping rooms, including Honeymoon Suites, one and two bedroom Luxury Suites.
- 15 meeting rooms to accommodate up to 800 people.
- Victor's Restaurant serving French Louisiana cuisine prepared by internationally renowned Chef Ernesto Pacheco.
- Madeline's Lounge with nightly entertainment.
- 7 miles from Baton Rouge Metro Airport. Transportation provided by hotel.

 **Sheraton Baton Rouge Hotel**

1-10 AT COLLEGE DRIVE
BATON ROUGE, LOUISIANA 70808
FOR RESERVATIONS CALL
1-800-325-3535 OR 504-925-2244

MORAN
COLORGRAPHIC



5425 FLORIDA BOULEVARD
P.O. BOX 66538
BATON ROUGE, LOUISIANA 70896
BATON ROUGE (504) 923-2550

*Best Wishes to
The Republican Party
from*

THE BOLLINGER FAMILY
Committed to Good Government

Win an Election!

Campaign &
Opinion
Research
Analysts

- Research
- Planning
- Targeting
- Voter Files

contact: Ronald E. Weber or Chester J. Diez, Jr.
118 East Cornerview Road
Gonzales, Louisiana 70737
(504) 647-1767

NOTES

MORAN
COLORGRAPHIC

Optical

The United States is a country of contrasts. It is a country of great wealth and great poverty. It is a country of great freedom and great oppression. It is a country of great hope and great despair. It is a country of great beauty and great ugliness. It is a country of great light and great darkness. It is a country of great life and great death. It is a country of great love and great hate. It is a country of great peace and great war. It is a country of great joy and great sorrow. It is a country of great faith and great unbelief. It is a country of great hope and great despair. It is a country of great love and great hate. It is a country of great peace and great war. It is a country of great joy and great sorrow. It is a country of great faith and great unbelief.

Best Wishes to
The Republican Party
from
The Bollinger Family
Committed to Good Government

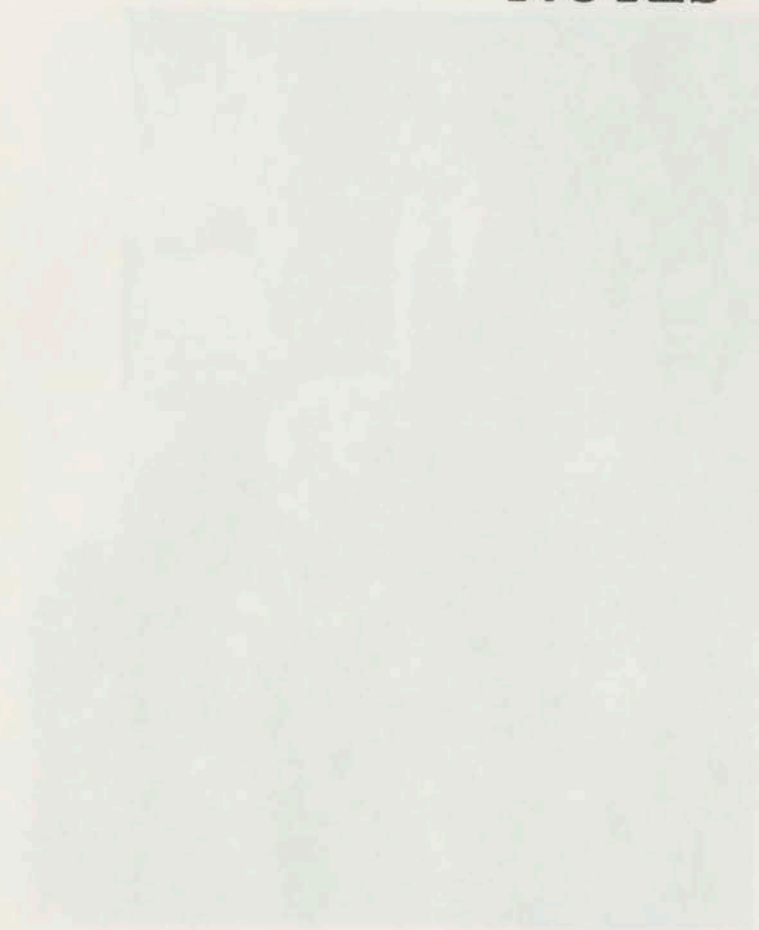
Win an Election!
Special Thanks To...

Special Thanks To...
The Bollinger Family
Committed to Good Government



Special Thanks To...
The Bollinger Family
Committed to Good Government

NOTES



The Road for
America's
Future

The Road for America's Future
The Road for America's Future
The Road for America's Future

NOTES



The Fund for America's Future

Dear Friends,,

As we acknowledge our Party's growth nationwide, I am especially delighted to pay tribute to Louisiana Republicans for your enthusiastic support and hard work. Through your help, our country is strong, growing and respected around the world. However, the next two years will be critical, as we prepare to take our Republican vision of the future into the 1990's.

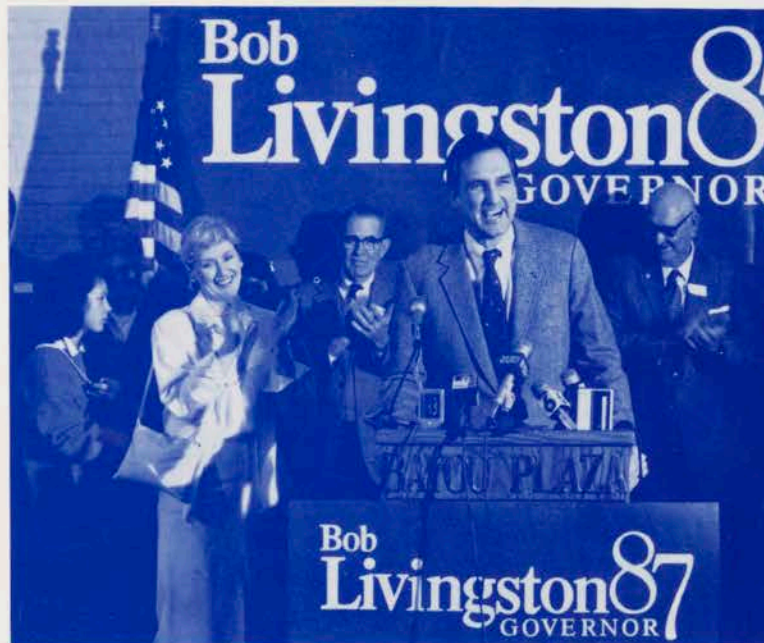
Barbara joins me in extending our warm wishes for the success of your Annual State Convention.

Sincerely,

Vice President Bush is the Founder and Honorary Chairman of the Fund for America's Future. The Fund is a multi-candidate committee dedicated to the support of the Republican Party and Republican candidates.

PAID FOR BY THE FUND FOR AMERICA'S FUTURE

BOB LIVINGSTON FOR GOVERNOR



Working to make life better in Louisiana.

The Times

Shreveport / Bossier March 15, 1987

By WILEY W. HILBURN, JR.

"One of his campaign leaders, a former newsman, compares him to Jimmy Stewart, and the role assignment fits he knows what he wants now, and what he wants to do But I sense steel behind the aw-shucks demeanor! 'When I give my word, people can depend on it.' He says that last part with conviction, and I believe him."

The Times-Picayune

January 4, 1987

By IRIS KELSO

"Livingston will be an attractive candidate. At 43 he is a tall, boyish looking man, a shirt sleeves campaigner who is as comfortable making the rounds of the political barrooms as he is in the corporate board room. He is an energetic man."

THE NEW YORK TIMES

February 28, 1987

By FRANCES FRANK MARCUS

"The only Republican in the race, Representative Bob Livingston, is regarded as the biggest beneficiary of an Edwards candidacy. Mr. Livingston, who also is 43, has represented Louisiana's First Congressional District for nearly 10 years and is regarded by many of his constituents as a hard-working Congressman."

BOB LIVINGSTON FOR GOVERNOR

3232 Veterans Memorial Blvd.

Metairie, Louisiana 70002

(504) 837-9022

Paid for by Bob Livingston for Governor, John Fowler, Treasurer

NRC Coziness With Industry Described

Documents on Power Plant's Safety Defects Leaked to Company, Senators Told

By Cass Peterson
Washington Post Staff Writer

Sensitive Nuclear Regulatory Commission documents alleging serious safety defects at a Louisiana nuclear power plant were leaked to the plant's owner, apparently from the office of an NRC commissioner who later tried to destroy evidence of the security breach, the agency's chief inspector told Congress yesterday.

Ben B. Hayes, head of the NRC Office of Investigations, told the Senate Governmental Affairs Committee that the documents, dated June 8, 1983, gave the Louisiana Power & Light Co. a "tremendous advantage" in a subsequent safety investigation at its Waterford plant near New Orleans. "I have never before seen an internal document of this nature given to a party at interest, either in this or any other agency where I have worked," said Hayes.

He and other witnesses said the leak to LP&L appeared to be part of a pattern of NRC coziness with the nuclear power industry, to the point of squelching potentially embarrassing investigations and compromising safety.

The document leak was not discovered until 1985 and was never fully investigated, Hayes testified. He said he was ordered to turn over his notes and all copies of the documents to NRC Commissioner Thomas M. Roberts, who told the senators he destroyed them.

"I saw no reason for them to continue to exist," Roberts testified. "They were torn up and thrown in the wastebasket."

The documents, written by an aide to then-Commissioner Victor Gilinsky and addressed to the director of the NRC's inspection office, outlined information gathered by a reporter about cracks in the concrete floor of Waterford's containment facility and unspecified "collusion" between the NRC and utility officials to cover up the problem.

The documents were discovered in LP&L's files two years later by an NRC inspector, along with a note from George E. White, a vice president of LP&L's parent company, Middle South Services of New Orleans. White's note, dated June 15, 1983, urged that the documents be kept confidential "to protect the source within the NRC."

White could not be reached for comment yesterday. NRC officials said that there are fine cracks in the floor, but that Waterford was granted an operating license in March 1985 after a review of the utility's quality-assurance records convinced the commission that the problem was not significant.

Roberts said he was unable to verify that the documents had come from his office although they bore his initials and indications that they had been routed through one of his aides. According to Hayes, Roberts suggested that the documents might have been sent to the utility by "janitorial personnel."

Under questioning by Chairman

John Glenn (D-Ohio), Roberts acknowledged that he did not ask White about the source of the leak.

Roberts, who was awaiting Senate confirmation at the time, told the Senate panel that he destroyed the documents and Hayes' notes because "I thought somebody was trying to set me up." Other commissioners did not object to his handling of the affair, he said.

However, Commissioner James K. Asselstine said yesterday that Roberts "never mentioned destruction of any documents."

Glenn called the episode evidence that the NRC is "totally incapable" of policing misconduct within the agency and vowed to press for legislation to establish an independent inspector general for the agency.

"The destruction of those documents makes the whole thing very suspect," he told Roberts. "It casts doubt as to the propriety of the commission."

According to Hayes, the agency's executive director for operations, Victor Stello Jr., was involved in a

similar "tipping" incident a year ago, when he advised the head of the Tennessee Valley Authority's nuclear operations on how to respond to an NRC inquiry.

The March 1986 episode occurred shortly after NRC officials had been warned privately by engineers at TVA's Watts Bar reactor in Tennessee that the plant did not meet construction standards. The NRC had written to TVA, seeking a response to the allegations.

According to Hayes, Stello advised TVA's director of nuclear operations, Adm. Steven White, "not to give a definitive response." The advice was given over a mobile telephone in an NRC car, in the presence of other NRC officials, Hayes said.

"In my view, this was a very serious, sensitive matter that deserved an expeditious review and investigation," Hayes said. Instead, he said, the matter was referred to the Office of Inspection and Audits, which is under Stello's control.

The investigators dropped the matter after talking to Stello and without interviewing TVA officials, he said.

Stello said after the hearing that he had "no reservations" about the propriety of his actions. "If a licensee calls and asks a question, I'm

going to give an answer," he said. "I wasn't doing anything improper."

Stello contended that adding an independent investigative branch to the NRC would be a move toward "further isolation" that could detract from nuclear safety. "We don't need any more emphasis of independence in this agency," he said. "It's so independent now it's impossible to deal with."

But Julian Greenspun, a former Justice Department attorney who handled criminal cases from the NRC for seven years before leaving the government last year, told the senators that the NRC has become "a captive of the industry it regulates."

Greenspun said NRC officials "actively misled and even lied to the Justice Department" after the 1979 accident at Three Mile Island in Pennsylvania by seeking to cover up evidence that the agency knew six months earlier about potentially dangerous leaks.

In a meeting with prosecutors, Greenspun said, Stello complained that an investigation at TMI would be bad for operator morale and that "nobody is going to tell me how to treat my licensees."

Stello said yesterday that he did not remember saying that, but "I'm not denying it either."