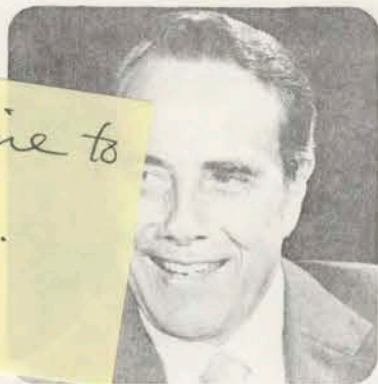


News from Senator

# BOB DOLE

blue line to  
Walt.



(R - Kansas)

SH 141 Hart Building, Washington, D.C. 20510




Avenue Redevelopment official Tom Overby, left, and City Councilman Ron Mears, right, present Kansas Senator Bob Dole with the key to Kansas City, Kansas on April 20.

Dear Kansan:

On April 20, I had the pleasure of participating in the Kansas City, Kansas "Pride Day" parade. It was great fun, and quite exciting; there are many of us who have been working for years towards a celebration of the revitalization of downtown Kansas City, Kansas.

April 20 was also the day for the grand opening of my relocated Kansas City office. It's now at 636 Minnesota, right in the heart of Kansas City, Kansas. I hope you will stop by or call anytime there is some way in which I can be of assistance to you. Gale Grosch and Ramona Corbin run the office, and they will relay to me any problems you are having, or suggestions you might make. The telephone number is (913)371-6108.

Sincerely yours,



### JOHNSON COUNTY FLOOD PROBLEMS TO BE STUDIED BY ARMY CORPS OF ENGINEERS

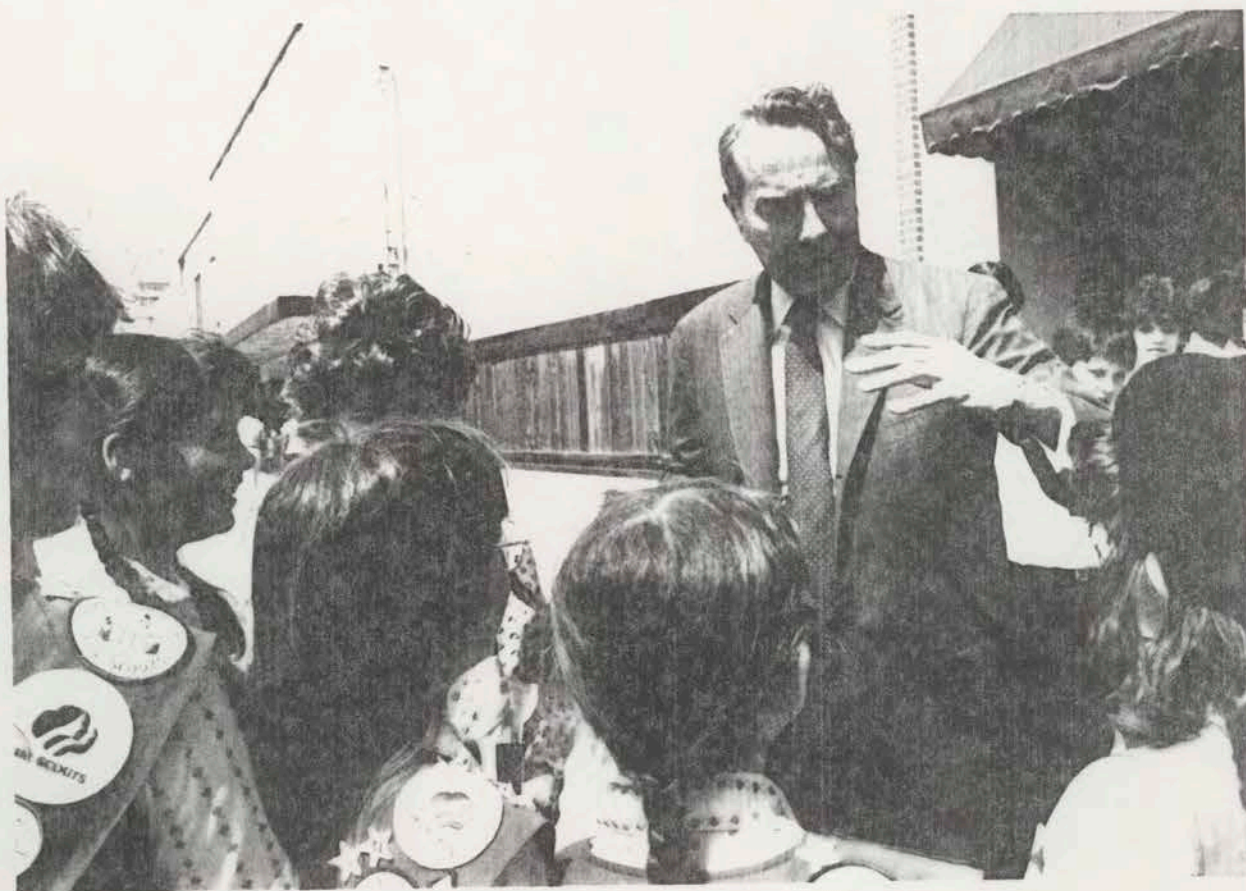
As you know, flooding along Indian Creek has long been a problem for Overland Park and Leawood residents. After months of working with Overland Park officials, I was pleased to announce that President Reagan's 1986 budget includes \$250,000 for a reconnaissance study by the Corps of Engineers of the upper Blue River Basin, including Indian Creek. The study will determine the steps that should be taken to eliminate or lessen Indian Creek flooding in Johnson County.

The hard work and persistence of Overland Park Mayor Ed Eilert (pictured at right with Mrs. Eilert and Senator Dole) helped to bring this problem to the attention of the Corps. The Corps of Engineers' budget must still be approved by Congress for work to begin in October.



### KANSAS CITY TO MAINTAIN FEDERAL REGIONAL STATUS

Despite long-standing, persistent rumors to the contrary, top officials in the Reagan Administration have given me their word that Kansas City will retain its federal regional status. It is true that federal agencies have been directed to become more efficient, and some jobs may be lost in that effort. But I have personally received commitments from the White House that there will not be a significant loss of federal jobs from Kansas City to Denver or any other federal regional center. One important factor in this matter to ensure that we retain access to government services, and I will see that we do.



Senator Dole visits with Girl Scouts at Kansas City "Pride Day."

**IT'S OFFICIAL! GM WILL BUILD NEW FAIRFAX PLANT IN KC, KS!**

The greater Kansas City area received a real economic boost recently when General Motors announced that it would go ahead with plans to construct a \$775 million plant in the Fairfax Industrial District.

The long-awaited GM decision came after months of lobbying and negotiating with local, state, and federal officials. Along with Representative Jan Meyers, Mayor Jack Reardon, Senator Nancy Kassebaum, and state officials, I worked closely with GM for months on this project. In both Washington and Kansas, my staff and I held a series of meetings with GM officials, including the company's Chairman, Roger Smith.

The 2.3 million square-foot auto assembly plant will be finished in time to produce 1988 GM-10 mid-size models. The expected opening date is late summer, 1987. GM will continue to operate the old Fairfax plant in the meantime, so no transition layoffs are expected.

I was pleased that all of the potential obstacles were overcome. The overall economic impact of this decision is certainly great news for the Kansas City area economy!



**KANSAS CITY, KANSAS NOW HOME FOR  
ENVIRONMENTAL PROTECTION AGENCY**

Also helping to revitalize downtown Kansas City is the arrival of the Environmental Protection Agency offices. As many of you know, Kansas City is a designated federal regional center. For too many years, though, it has only been Kansas City MISSOURI realizing any economic benefits. Virtually all of the federal regional offices have been on the Missouri side of State Line.

It just didn't make any sense for Kansas City, Missouri to get all of the office space, or for Kansas City, Missouri restaurants, hotels, and stores to get all of the business that goes along with them. For that reason, I fought hard in conjunction with your community leaders to see that Kansas locations would be considered when the Environmental Protection Agency announced it was looking for new office space.

And, your bid won out! The subsequent move meant more than 350 federal employees joining the workforce on Minnesota Street, and helped pave the way for a resurgence of activity in downtown Kansas City, Kansas.

OLATHE, LENEXA CITY OFFICIALS VISIT DOLE IN WASHINGTON



Lenexa Mayor Rich Becker, Councilmember Marla Manske, and Mrs. Becker are pictured during a meeting in Dole's Capitol office.



Senator Dole, Olathe City Commissioner Lois Taylor, and Mayor Herman Cline discuss local concerns after a Capitol breakfast.